

# RoHS 测试报告

## RoHS Test Report

报告编号 : AGC00925210601-001  
Report No.

样品名称 : Camera Hub G3  
SAMPLE NAME

样品型号 : CH-H03  
MODEL NAME

委托单位 : 深圳绿米联创科技有限公司  
APPLICANT : Lumi United Technology Co., Ltd

检测标准 : 请参见后续页(Please refer to follow page(s)).  
STANDARD(S)

签发日期 : 2021/07/21  
DATE OF ISSUE

**深圳市鑫宇环标准技术有限公司**

***Attestation of Global Compliance (Shenzhen) Std & Tech Co., Ltd.***



Any report having not been signed by authorized approver, or having been altered without authorization, or having not been stamped by the "Dedicated Testing/Inspection Stamp" is deemed to be invalid. Copying or excerpting portion of, or altering the content of the report is not permitted without the written authorization of AGC. The test results presented in the report apply only to the tested sample. Any objections to report issued by AGC should be submitted to AGC within 15days after the issuance of the test report. Further enquiry of validity or verification of the test report should be addressed to AGC by agc@agc-cert.com.



委托单位(Applicant) : 深圳绿米联创科技有限公司 Lumi United Technology Co., Ltd  
深圳市南山区桃源街道留仙大道塘岭路 1 号金骐智谷大厦 8 楼

单位地址(Address) : 8th Floor, JinQi Wisdom Valley, No.1 Tangling Road, Liuxian  
Ave, Taoyuan Residential District, Nanshan District,  
Shenzhen.China.  
深圳市宝安区航城街道三围社区三围茶西工业区 2 栋 6 层

测试地址(Test Site) : 6/F., Building 2, Sanwei Chaxi Industrial Park, Sanwei  
Community, Hangcheng Street, Bao'an District, Shenzhen,  
Guangdong, China

**样品信息(Report on the submitted sample(s) said to be):**

样品名称(Sample Name) : Camera Hub G3

型号(Model) : CH-H03

商标(Brand): : Aqara

制造商(Manufacturer) : 深圳绿米联创科技有限公司 Lumi United Technology Co., Ltd  
深圳市南山区桃源街道留仙大道塘岭路 1 号金骐智谷大厦 8 楼

地址(Address) : 8th Floor, JinQi Wisdom Valley, No.1 Tangling Road, Liuxian Ave,  
Taoyuan Residential District, Nanshan District, Shenzhen.China.

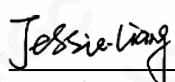
收样日期(Sample Received Date) : 2021/06/15

测试周期(Testing Period) : 2021/06/15-2021/06/30

**测试要求****Test Requested:**

根据客户要求, 依据欧盟议会和欧盟理事会第2011/65/EU(RoHS)号指令及修正案(EU) 2015/863的要求, 通过XRF扫描和化学方法对送检样品中的铅、镉、汞、六价铬、多溴联苯、多溴二苯醚、DBP、BBP、DEHP、DIBP的含量进行测定。

As specified by client, to determine the Pb, Cd, Hg, Cr<sup>6+</sup>, PBBs, PBDEs, DBP, BBP, DEHP, DIBP content in the submitted sample in accordance with Directive 2011/65/EU (RoHS) and its amendment directive (EU) 2015/863 on XRF and Chemical Method.

**结论  
Conclusion****合格  
Pass**Approved by: 

签发: 梁丹(Jessie.Liang)

技术总监(Technical Director)



序号 No.	样品描述 Sample Description			
Camera Hub G3 (CH-H03)				
1	外壳 Outer shell	白色塑料面壳	White plastic shell	
2		白色塑料按键	White plastic button	
3		透明塑料灯罩	Transparent plastic lampshade	
4		白色塑料后壳	White plastic back shell	
5		灰色橡胶垫圈	Grey rubber washer	
6		灰色塑料底盖	Gray plastic bottom cover	
7		灰色丝印	Grey screen printing	
8		铜色金属螺纹圈	Copper metal thread ring	
9		灰色塑料内壳	Grey plastic inner shell	
10		黑色塑料壳	Black plastic shell	
11		白色涂层	White coating	
12	螺丝组件 Screw assembly	银色螺丝	Silver screw	
13		银白色螺丝	Silver white screw	
14		银色大头螺丝	Silver big head screw	
15		银色圆头螺丝	Silver round head screw	
16		白色橡胶螺塞	White rubber plug	
17	灯板 Light board	贴片 LED	Chip LED	
18		贴片 LED	Chip LED	
19		白色扫码标签	White scavenging label	
20		贴片黑色感光灯	Slip black light sensitive lamp	
21		黑色胶帽	Black glue cap	
22		黑色 PCB 板	Black PCB board	
23		蓝色指示灯	Blue light	
24		贴片二极管	Chip diode	
25		贴片三极管	Chip triode	
26		贴片电容	Chip capacitor	
27		贴片电阻	Chip resistor	
28		IC 本体	IC body	
29		镀锡引脚	Tin plated pin	
30		贴片电感	Chip inductor	
31	焊锡	Tin solder		
32	灯板针座 Lamp needle plate	米白色塑料针座	Creamy white plastic micropositioner	
33		插针	Contact pin	
34	接头板 Joint plate	贴片三极管	Chip triode	
35		贴片电阻	Chip resistor	
36		贴片电容	Chip capacitor	
37		针座 Micropositioner	米白色塑料针座	Creamy white plastic micropositioner
38			插针	Contact pin
39		焊锡	Tin solder	
40		TYPE-C 接头	TYPE-C 金属接头	TYPE-C metal joint
41		TYPE-C connector	黑色塑料接头	Black plastic joint

Any report having not been signed by authorized approver, or having been altered without authorization, or having not been stamped by the "Dedicated Testing/Inspection Stamp" is deemed to be invalid. Copying or excerpting portion of, or altering the content of the report is not permitted without the written authorization of AGC. The test results presented in the report apply only to the tested sample. Any objections to report issued by AGC should be submitted to AGC within 15 days after the issuance of the test report. Further enquiry of validity or verification of the test report should be addressed to AGC by agc@agc-cert.com.



42			插针	Contact pin
43		PCB 板		PCB board
44			蓝色胶片	Blue plastic piece
45	FFC 排线		FFC 排线	FFC winding displacement
46	FFC winding displacement		黑色胶布	Black adhesive tape
47			金属丝	Metal wire
48		针座	米白色塑料针座	Creamy white plastic micropositioner
49		Micropositioner	插针	Contact pin
50		针座	白色塑料针座	White plastic micropositioner
51		Micropositioner	插针	Contact pin
52		贴片 LED		Chip LED
53		FFC 座 FFC holder	黑色塑料扣	Black plastic button
54			白色塑料座	White plastic seat
55	按键板	贴片三极管		Chip triode
56	Keyboard plate	贴片电阻		Chip resistor
57		贴片电容		Chip capacitor
58		黑色 PCB 板		Black PCB board
59		焊锡		Tin solder
60		轻触开关	白色塑料按钮	White plastic button
61			银色金属壳	Silver metal shell
62			金属弹片	Metal shrapnel
63			黑色塑料座	Black plastic seat
64			引脚	Pin
65		白色塑料支架		White plastic stent
66		白色塑料端子		White plastic terminal
67		端子连接线	黑色线皮	Black wire jacket
68			黑色胶布	Black adhesive tape
69			线芯	Wire core
70		端子连接线	白色塑料端子	White plastic terminal
71			白色线皮	White wire jacket
72			黄色线皮	Yellow wire jacket
73			线芯	Wire core
74		轴承 Bearing	黑色胶布	Black adhesive tape
75			银色金属盖	Silver metal cover
76			金属外圈	Metal outer ring
77			金属内圈	Metal inner ring
78			金属支架	Metal support
79		金属珠	Metal beads	
80		喇叭外壳 Horn outer shell	黑色泡棉圈	Black foam ring
81			黑色塑料壳	Black plastic shell
82			黑色塑料底壳	Black plastic bottom shell
83		喇叭 Horn	黑色塑料支架	Black plastic stents
84			黑色泡棉	Black foam
85			黑色防尘网	Black dust proof net
86			焊锡	Tin solder

Any report having not been signed by authorized approver, or having been altered without authorization, or having not been stamped by the "Dedicated Testing/Inspection Stamp" is deemed to be invalid. Copying or excerpting portion of, or altering the content of the report is not permitted without the written authorization of AGC. The test results presented in the report apply only to the tested sample. Any objections to report issued by AGC should be submitted to AGC within 15 days after the issuance of the test report. Further enquiry of validity or verification of the test report should be addressed to AGC by agc@agc-cert.com.



87		线芯	Wire core
88		黑色线皮	Black wire jacket
89		红色线皮	Red wire jacket
90		黑胶	Black glue
91		白色塑料端子	White plastic terminal
92		银色金属壳	Silver metal shell
93		银色金属片	Silver metal sheet
94		银色磁铁	Silver magnet
95		黑色边圈振膜	Black rim diaphragm
96		黑色音盆	Black cone
97		漆包线圈	Enameled coil
98		标签	Label
99		黑色胶贴	Black adhesive plaster
100		银色金属壳	Silver metal shell
101		金属底座	Metal base
102		银色金属轴	Silver metal axis
103		金属转轴	Metal rotating shaft
104		白色塑料圈	White plastic ring
105		金属支架	Metal support
106		金属轴	Metal shaft
107		绿色塑料齿轮	Green plastic gear
108		三角金属片	Triangular metal sheet
109		黑色磁铁	Black magnet
110		白色塑料轴	White plastic shaft
111	电机 Motor	金属架	Metal frame
112		漆包线圈	Enameled coil
113		棕色塑料架	Brown plastic frame
114		焊锡	Tin solder
115		针脚	Pin
116		白色塑料扣	White plastic buckle
117		黑色胶布	Black adhesive tape
118		红色线皮	Red wire jacket
119		黑色线皮	Black wire jacket
120		黄色线皮	Yellow wire jacket
121		棕色线皮	Brown wire jacket
122		白色塑料端子	White plastic terminal
123		蓝色线皮	Blue wire jacket
124			线芯
125		银色金属盖	Silver metal cover
126		铜箔	Copper foil
127		黑色胶布	Black adhesive tape
128		蓝色矽胶片	Blue silica sheet
129		贴片 IC	Chip IC
130		贴片晶振	Chip crystal oscillator
131		QC 标签	QC label

Any report having not been signed by authorized approver, or having been altered without authorization, or having not been stamped by the "Dedicated Testing/Inspection Stamp" is deemed to be invalid. Copying or excerpting portion of, or altering the content of the report is not permitted without the written authorization of AGC. The test results presented in the report apply only to the tested sample. Any objections to report issued by AGC should be submitted to AGC within 15days after the issuance of the test report. Further enquiry of validity or verification of the test report should be addressed to AGC by agc@agc-cert.com.



132	主板 Main board	贴片磁架电感	Chip magnet frame inductance	
133		米白色塑料针座	Creamy white plastic micropositioner	
134		插针	Contact pin	
135		贴片二极管	Chip diode	
136		银色金属片	Silver metal sheet	
137		IC	IC 本体	IC body
138			镀锡引脚	Tin plated pin
139		FFC 座 FFC holder	黑色塑料扣	Black plastic button
140			白色塑料座	White plastic seat
141		黑色接收器	Black receiver	
142		贴片 IC	Chip IC	
143		IC	IC 本体	IC body
144			镀锡引脚	Tin plated pin
145		黑胶	Black glue	
146		贴片芯片	Chip core	
147		贴片电容	Chip capacitor	
148		贴片电阻	Chip resistor	
149		贴片三极管	Chip triode	
150		黑色 PCB 板	Black PCB board	
151		焊锡	Tin solder	
152		内存卡座 Memory card holder	银色金属盖	Silver metal cover
153			白色贴纸	White sticker
154			灰色塑料座	Grey plastic seat
155			插针	Contact pin
156			金属弹簧	Metal spring
157		黑色塑料扣	Black plastic button	
158		模块电路板 Modular circuit board	银色金属盖	Silver metal cover
159			白色扫码标签	White scavenging label
160			贴片电感	Chip inductor
161			贴片电容	Chip capacitor
162			贴片晶振	Chip crystal oscillator
163			贴片 IC	Chip IC
164	贴片电阻		Chip resistor	
165	绿色 PCB 板	Green PCB board		
166	电解电容 Electrolytic capacitor	金属铝壳	Aluminum shell	
167		电解纸	Electrolytic paper	
168		黑色电极箔	Black electrode foil	
169		黑色胶塞	Black rubber plug	
170	引脚	Pin		
171	摄像头 Camera	黑色胶圈	Black plastic circle	
172		黑色塑料壳	Black plastic shell	
173		黑色塑料镜片	Black plastic lens	
174		透明塑料镜片	Transparent plastic lens	
175		透明玻璃	Transparent glass	
176		黑色金属圈	Black metal ring	

Any report having not been signed by authorized approver, or having been altered without authorization, or having not been stamped by the "Dedicated Testing/Inspection Stamp" is deemed to be invalid. Copying or excerpting portion of, or altering the content of the report is not permitted without the written authorization of AGC. The test results presented in the report apply only to the tested sample. Any objections to report issued by AGC should be submitted to AGC within 15 days after the issuance of the test report. Further enquiry of validity or verification of the test report should be addressed to AGC by agc@agc-cert.com.



177		黑色金属圈	Black metal ring
178		黑色塑料壳	Black plastic shell
179		黑色金属片	Black metal sheet
180		透明方形玻璃	Transparent square glass
181		金属支架	Metal support
182		漆包线	Enameled wire
183		黑色磁圈	Black magnet ring
184		黑色塑料	Black plastic
185		黑色塑料底座	Black plastic base seat
186		黑色线皮	Black wire jacket
187		线芯	Wire core
188		红色线皮	Red wire jacket
189		白色塑料端子	White plastic terminal
USB 线 USB line			
190	USB 插头 USB plug	白色握柄	White handle
191		乳白色内胶	Milk white inner glue
192		焊锡	Tin solder
193		白色塑料插头	White plastic plug
194		插针	Contact pin
195		USB 金属插头	USB metal plug
196	TYPE-C 插头 Type-C plug	白色握柄	White handle
197		乳白色内胶	Milk white inner glue
198		黑色塑料插头	Black plastic plug
199		焊锡	Tin solder
200		TYPE-C 金属插头	Type-C metal plug
201		金属顶针	Metal thimble
202		插针	Contact pin
203		绿色 PCB 板	Green PCB board
204		贴片电阻	Chip resistor
205	线材 Wire rod	白色外线皮	White outer wire jacket
206		绿色线皮	Green wire jacket
207		线芯	Wire core
208		红色线皮	Red wire jacket
209		黑色线皮	Black wire jacket
210		白色线皮	White wire jacket
英规适配器 British standard adapter			
211	外壳 Outer shell	白色塑料插头	White plastic plug
212		银色金属框	Silver metal frame
213		灰色塑料盖	Grey plastic lid
214		灰色塑料底盖	Gray plastic bottom cover
215		灰色丝印	Grey screen printing
216		白色塑料壳	White plastic shell
217		金属插头	Metal plug
218		银色螺丝	Silver screw
219		金属触片	Metal contact piece

Any report having not been signed by authorized approver, or having been altered without authorization, or having not been stamped by the "Dedicated Testing/Inspection Stamp" is deemed to be invalid. Copying or excerpting portion of, or altering the content of the report is not permitted without the written authorization of AGC. The test results presented in the report apply only to the tested sample. Any objections to report issued by AGC should be submitted to AGC within 15days after the issuance of the test report. Further enquiry of validity or verification of the test report should be addressed to AGC by agc@agc-cert.com.



220	焊锡	Tin solder	
221	PCB 板	PCB board	
222	贴片整流桥	Chip rectifier bridge	
223	贴片电感	Chip inductor	
224	贴片电阻	Chip resistor	
225	贴片电容	Chip capacitor	
226	贴片二极管	Chip diode	
227	IC 本体	IC body	
228	镀锡	Tin plating	
229	黑色塑料卡座	Black plastic holder	
230	白胶	White glue	
231	陶瓷电容 Ceramic capacitance	陶瓷电容本体	Ceramic capacitance body
232		引脚	Pin
233	热敏电阻 Thermistor	热敏电阻本体	Thermistor body
234		引脚	Pin
235	保险丝 Fuse	红色塑料壳	Red plastic shell
236		金属丝	Metal wire
237		白色棉	White cotton
238		黑色塑料座	Black plastic seat
239		引脚	Pin
240	电解电容 Electrolytic capacitor	绿色套管	Green sleeving
241		黑色套管	Black sleeving
242		铝壳	Aluminum shell
243		正极箔	Anode foil
244		负极箔	Cathode foil
245		引脚	Pin
246		黑色胶塞	Black rubber plug
247		电解纸	Electrolytic paper
248	USB 接头 USB joint	白色塑料壳	White plastic shell
249		USB 金属接头	USB metal joint
250		白色塑料接头	White plastic joint
251		插针	Contact pin
252	电容 Capacitance	铝壳	Aluminum shell
253		黑色胶塞	Black rubber plug
254		引脚	Pin
255		黑色电极箔	Black electrode foil
256		电解纸	Electrolytic paper
257	变压器 Transformer	黑色外线套	Black outer sleeve
258		黄色三层绝缘线	Yellow three-layer insulated wire
259		线芯	Wire core
260		黑色磁架	Black magnetic frame
261		黑色塑料骨架	Black plastic skeleton
262		漆包线	Enameled wire
263		黄色胶带	Yellow tape
欧规适配器 European standard adapter			

Any report having not been signed by authorized approver, or having been altered without authorization, or having not been stamped by the "Dedicated Testing/Inspection Stamp" is deemed to be invalid. Copying or excerpting portion of, or altering the content of the report is not permitted without the written authorization of AGC. The test results presented in the report apply only to the tested sample. Any objections to report issued by AGC should be submitted to AGC within 15days after the issuance of the test report. Further enquiry of validity or verification of the test report should be addressed to AGC by agc@agc-cert.com.





264	外壳 Outer shell	金属插头	Metal plug
265		白色塑料插头	White plastic plug
266		灰色丝印	Grey screen printing
267		白色塑料壳	White plastic shell
268		白色塑料底盖	White plastic bottom cover
269	白胶		White glue
270	金属触片		Metal contact piece
271	焊锡		Tin solder
272	PCB 板		PCB board
273	贴片整流桥		Chip rectifier bridge
274	贴片电感		Chip inductor
275	贴片电阻		Chip resistor
276	贴片电容		Chip capacitor
277	贴片二极管		Chip diode
278	IC 本体		IC body
279	镀锡		Tin plating
280	USB 接头 USB joint	USB 金属接头	USB metal joint
281		白色塑料接头	White plastic joint
282		插针	Contact pin
283	色环电感 Chromatic ring inductor	电感本体	Inductance body
284		引脚	Pin
285	陶瓷电容 Ceramic capacitance	电容本体	Capacitor body
286		引脚	Pin
287	色环电阻 Color ring resistance	黑色热缩套管	Black heat shrinkable casing
288		电阻本体	Resistor body
289		引脚	Pin
290	变压器 Transformer	黄色胶带	Yellow tape
291		带丝印透明标签	Transparent label with screen printing
292		黑色塑料骨架	Black plastic skeleton
293		漆包线	Enameled wire
294		黑色磁架	Black magnetic frame
295		三层绝缘线皮	Three layer insulated wire jacket
296		线芯	Wire core
297		电解电容 Electrolytic capacitor	绿色套管
298	黑色套管		Black sleeving
299	铝壳		Aluminum shell
300	黑色胶塞		Black rubber plug
301	引脚		Pin
302	负极箔		Cathode foil
303	正极箔		Anode foil
304	电解纸		Electrolytic paper

Any report having not been signed by authorized approver, or having been altered without authorization, or having not been stamped by the "Dedicated Testing/Inspection Stamp" is deemed to be invalid. Copying or excerpting portion of, or altering the content of the report is not permitted without the written authorization of AGC. The test results presented in the report apply only to the tested sample. Any objections to report issued by AGC should be submitted to AGC within 15 days after the issuance of the test report. Further enquiry of validity or verification of the test report should be addressed to AGC by agc@agc-cert.com.



**测试结果(Test Result):**

(测试方法/仪器/方法检出限及限值: 见附件)

(Test Method/ Instrument/ MDL and Limit: See Appendix)

**1.RoHS 测试结果(Test Result of RoHS)**

序号 No.	测试结果 Test result (mg/kg)										结论 Conclusion
	Pb	Cd	Hg	Cr <sup>6+</sup>	PBBs	PBDEs	DIBP	DBP	BBP	DEHP	
1	N.D.	N.D.	N.D.	N.D.	N.D.	N.D.	N.D.*	N.D.*	N.D.*	N.D.*	符合 Conformity
2	N.D.	N.D.	N.D.	N.D.	N.D.	N.D.	N.D.*	N.D.*	N.D.*	N.D.*	符合 Conformity
3	N.D.	N.D.	N.D.	N.D.	N.D.	N.D.	N.D.*	N.D.*	N.D.*	N.D.*	符合 Conformity
4	N.D.	N.D.	N.D.	N.D.	N.D.	N.D.	N.D.*	N.D.*	N.D.*	N.D.*	符合 Conformity
5	N.D.	N.D.	N.D.	N.D.	N.D.	N.D.	N.D.*	N.D.*	N.D.*	N.D.*	符合 Conformity
6	N.D.	N.D.	N.D.	N.D.	N.D.	N.D.	N.D.*	N.D.*	N.D.*	N.D.*	符合 Conformity
7	N.D.	N.D.	N.D.	N.D.	N.D.	N.D.	N.D.*	N.D.*	N.D.*	N.D.*	符合 Conformity
8	31122*	N.D.	N.D.	N.D.	N/A	N/A	N/A	N/A	N/A	N/A	符合 Conformity
9	N.D.	N.D.	N.D.	299	N.D.	N.D.	N.D.*	N.D.*	N.D.*	N.D.*	符合 Conformity
10	N.D.	N.D.	N.D.	N.D.	N.D.	N.D.	N.D.*	N.D.*	N.D.*	N.D.*	符合 Conformity
11	N.D.	N.D.	N.D.	N.D.	N.D.	N.D.	N.D.*	N.D.*	N.D.*	N.D.*	符合 Conformity
12	392	N.D.	N.D.	400	N/A	N/A	N/A	N/A	N/A	N/A	符合 Conformity
13	N.D.	N.D.	N.D.	N.D.	N/A	N/A	N/A	N/A	N/A	N/A	符合 Conformity
14	N.D.	N.D.	N.D.	N.D.	N/A	N/A	N/A	N/A	N/A	N/A	符合 Conformity
15	N.D.	N.D.	N.D.	N.D.*	N/A	N/A	N/A	N/A	N/A	N/A	符合 Conformity
16	N.D.	N.D.	N.D.	N.D.	N.D.	N.D.	N.D.*	N.D.*	N.D.*	N.D.*	符合 Conformity
17	N.D.	N.D.	N.D.	N.D.	N.D.	N.D.	N.D.*	N.D.*	N.D.*	N.D.*	符合 Conformity
18	N.D.	N.D.	N.D.	N.D.	N.D.	N.D.	N.D.*	N.D.*	N.D.*	N.D.*	符合 Conformity
19	N.D.	N.D.	N.D.	N.D.	N.D.	N.D.	N.D.*	N.D.*	N.D.*	N.D.*	符合 Conformity
20	N.D.	N.D.	N.D.	N.D.	N.D.	N.D.	N.D.*	N.D.*	N.D.*	N.D.*	符合 Conformity

Any report having not been signed by authorized approver, or having been altered without authorization, or having not been stamped by the "Dedicated Testing/Inspection Stamp" is deemed to be invalid. Copying or excerpting portion of, or altering the content of the report is not permitted without the written authorization of AGC. The test results presented in the report apply only to the tested sample. Any objections to report issued by AGC should be submitted to AGC within 15days after the issuance of the test report. Further enquiry of validity or verification of the test report should be addressed to AGC by agc@agc-cert.com.



序号 No.	测试结果 Test result (mg/kg)										结论 Conclusion
	Pb	Cd	Hg	Cr <sup>6+</sup>	PBBs	PBDEs	DIBP	DBP	BBP	DEHP	
21	N.D.	N.D.	N.D.	N.D.	N.D.	N.D.	N.D.*	N.D.*	N.D.*	N.D.*	符合 Conformity
22	N.D.	N.D.	N.D.	N.D.	N.D.*	N.D.*	N.D.*	N.D.*	N.D.*	N.D.*	符合 Conformity
23	N.D.	N.D.	204	N.D.	N.D.	N.D.	N.D.*	N.D.*	N.D.*	N.D.*	符合 Conformity
24	N.D.	N.D.	N.D.	N.D.	N.D.	N.D.	N.D.*	N.D.*	N.D.*	N.D.*	符合 Conformity
25	N.D.	N.D.	N.D.	N.D.	N.D.	N.D.	N.D.*	N.D.*	N.D.*	N.D.*	符合 Conformity
26	N.D.	N.D.	N.D.	N.D.	N.D.	N.D.	N.D.*	N.D.*	N.D.*	N.D.*	符合 Conformity
27	N.D.	N.D.	N.D.	N.D.	N.D.	N.D.	N.D.*	N.D.*	N.D.*	N.D.*	符合 Conformity
28	N.D.	N.D.	N.D.	N.D.	N.D.	N.D.	N.D.*	N.D.*	N.D.*	N.D.*	符合 Conformity
29	N.D.	N.D.	N.D.	N.D.	N/A	N/A	N/A	N/A	N/A	N/A	符合 Conformity
30	N.D.	N.D.	N.D.	N.D.	N.D.	N.D.	N.D.*	N.D.*	N.D.*	N.D.*	符合 Conformity
31	N.D.	N.D.	N.D.	N.D.	N/A	N/A	N/A	N/A	N/A	N/A	符合 Conformity
32	N.D.	N.D.	N.D.	N.D.	N.D.	N.D.	N.D.*	N.D.*	N.D.*	N.D.*	符合 Conformity
33	N.D.	N.D.	N.D.	N.D.	N/A	N/A	N/A	N/A	N/A	N/A	符合 Conformity
34	N.D.	N.D.	N.D.	N.D.	N.D.	N.D.	N.D.*	N.D.*	N.D.*	N.D.*	符合 Conformity
35	N.D.	N.D.	N.D.	N.D.	N.D.	N.D.	N.D.*	N.D.*	N.D.*	N.D.*	符合 Conformity
36	N.D.	N.D.	N.D.	N.D.	N.D.	N.D.	N.D.*	N.D.*	N.D.*	N.D.*	符合 Conformity
37	N.D.	N.D.	N.D.	N.D.	N.D.	N.D.	N.D.*	N.D.*	N.D.*	N.D.*	符合 Conformity
38	N.D.	N.D.	N.D.	N.D.	N/A	N/A	N/A	N/A	N/A	N/A	符合 Conformity
39	N.D.	N.D.	N.D.	N.D.	N/A	N/A	N/A	N/A	N/A	N/A	符合 Conformity
40	266	N.D.	N.D.	N.D.*	N/A	N/A	N/A	N/A	N/A	N/A	符合 Conformity
41	N.D.	N.D.	N.D.	N.D.	N.D.	N.D.	N.D.*	N.D.*	N.D.*	N.D.*	符合 Conformity
42	N.D.	N.D.	N.D.	N.D.	N/A	N/A	N/A	N/A	N/A	N/A	符合 Conformity
43	N.D.	N.D.	N.D.	N.D.	N.D.*	N.D.*	N.D.*	N.D.*	N.D.*	N.D.*	符合 Conformity

Any report having not been signed by authorized approver, or having been altered without authorization, or having not been stamped by the "Dedicated Testing/Inspection Stamp" is deemed to be invalid. Copying or excerpting portion of, or altering the content of the report is not permitted without the written authorization of AGC. The test results presented in the report apply only to the tested sample. Any objections to report issued by AGC should be submitted to AGC within 15days after the issuance of the test report. Further enquiry of validity or verification of the test report should be addressed to AGC by agc@agc-cert.com.



序号 No.	测试结果 Test result (mg/kg)										结论 Conclusion
	Pb	Cd	Hg	Cr <sup>6+</sup>	PBBs	PBDEs	DIBP	DBP	BBP	DEHP	
44	N.D.	N.D.	N.D.	N.D.	N.D.*	N.D.*	N.D.*	N.D.*	N.D.*	N.D.*	符合 Conformity
45	N.D.	N.D.	N.D.	N.D.	N.D.*	N.D.*	N.D.*	N.D.*	N.D.*	N.D.*	符合 Conformity
46	N.D.	N.D.	N.D.	N.D.	N.D.*	N.D.*	N.D.*	N.D.*	N.D.*	N.D.*	符合 Conformity
47	N.D.	N.D.	N.D.	531	N/A	N/A	N/A	N/A	N/A	N/A	符合 Conformity
48	N.D.	N.D.	N.D.	N.D.	N.D.	N.D.	N.D.*	N.D.*	N.D.*	N.D.*	符合 Conformity
49	N.D.	N.D.	N.D.	N.D.	N/A	N/A	N/A	N/A	N/A	N/A	符合 Conformity
50	N.D.	N.D.	N.D.	N.D.	N.D.	N.D.	N.D.*	N.D.*	N.D.*	N.D.*	符合 Conformity
51	N.D.	N.D.	N.D.	N.D.	N/A	N/A	N/A	N/A	N/A	N/A	符合 Conformity
52	N.D.	N.D.	N.D.	N.D.	N.D.	N.D.	N.D.*	N.D.*	N.D.*	N.D.*	符合 Conformity
53	N.D.	N.D.	N.D.	N.D.	N.D.	N.D.	N.D.*	N.D.*	N.D.*	N.D.*	符合 Conformity
54	N.D.	N.D.	N.D.	N.D.	N.D.	N.D.	N.D.*	N.D.*	N.D.*	N.D.*	符合 Conformity
55	N.D.	N.D.	N.D.	N.D.	N.D.	N.D.	N.D.*	N.D.*	N.D.*	N.D.*	符合 Conformity
56	N.D.	N.D.	N.D.	N.D.	N.D.	N.D.	N.D.*	N.D.*	N.D.*	N.D.*	符合 Conformity
57	N.D.	N.D.	N.D.	N.D.	N.D.	N.D.	N.D.*	N.D.*	N.D.*	N.D.*	符合 Conformity
58	N.D.	N.D.	N.D.	N.D.	N.D.*	N.D.*	N.D.*	N.D.*	N.D.*	N.D.*	符合 Conformity
59	N.D.	N.D.	N.D.	N.D.	N/A	N/A	N/A	N/A	N/A	N/A	符合 Conformity
60	N.D.	N.D.	N.D.	N.D.	N.D.	N.D.	N.D.*	N.D.*	N.D.*	N.D.*	符合 Conformity
61	536	N.D.	N.D.	379	N/A	N/A	N/A	N/A	N/A	N/A	符合 Conformity
62	N.D.	N.D.	N.D.	N.D.*	N/A	N/A	N/A	N/A	N/A	N/A	符合 Conformity
63	N.D.	N.D.	N.D.	343	N.D.	N.D.	N.D.*	N.D.*	N.D.*	N.D.*	符合 Conformity
64	N.D.	N.D.	N.D.	N.D.	N/A	N/A	N/A	N/A	N/A	N/A	符合 Conformity
65	N.D.	N.D.	N.D.	278	N.D.	N.D.	N.D.*	N.D.*	N.D.*	N.D.*	符合 Conformity
66	N.D.	N.D.	N.D.	N.D.	N.D.	N.D.	N.D.*	N.D.*	N.D.*	N.D.*	符合 Conformity

Any report having not been signed by authorized approver, or having been altered without authorization, or having not been stamped by the "Dedicated Testing/Inspection Stamp" is deemed to be invalid. Copying or excerpting portion of, or altering the content of the report is not permitted without the written authorization of AGC. The test results presented in the report apply only to the tested sample. Any objections to report issued by AGC should be submitted to AGC within 15days after the issuance of the test report. Further enquiry of validity or verification of the test report should be addressed to AGC by agc@agc-cert.com.



序号 No.	测试结果 Test result (mg/kg)										结论 Conclusion
	Pb	Cd	Hg	Cr <sup>6+</sup>	PBBs	PBDEs	DIBP	DBP	BBP	DEHP	
67	N.D.	N.D.	N.D.	N.D.	N.D.	N.D.	N.D.*	N.D.*	N.D.*	N.D.*	符合 Conformity
68	N.D.	N.D.	N.D.	N.D.	N.D.	N.D.	N.D.*	N.D.*	N.D.*	N.D.*	符合 Conformity
69	N.D.	N.D.	N.D.	N.D.	N/A	N/A	N/A	N/A	N/A	N/A	符合 Conformity
70	N.D.	N.D.	N.D.	N.D.	N.D.	N.D.	N.D.*	N.D.*	N.D.*	N.D.*	符合 Conformity
71	N.D.	N.D.	N.D.	N.D.	N.D.	N.D.	N.D.*	N.D.*	N.D.*	N.D.*	符合 Conformity
72	N.D.	N.D.	N.D.	N.D.	N.D.	N.D.	N.D.*	N.D.*	N.D.*	N.D.*	符合 Conformity
73	N.D.	N.D.	N.D.	N.D.	N/A	N/A	N/A	N/A	N/A	N/A	符合 Conformity
74	N.D.	N.D.	N.D.	N.D.	N.D.	N.D.	N.D.*	N.D.*	N.D.*	N.D.*	符合 Conformity
75	N.D.	N.D.	N.D.	537	N/A	N/A	N/A	N/A	N/A	N/A	符合 Conformity
76	N.D.	N.D.	N.D.	N.D.*	N/A	N/A	N/A	N/A	N/A	N/A	符合 Conformity
77	N.D.	N.D.	N.D.	N.D.*	N/A	N/A	N/A	N/A	N/A	N/A	符合 Conformity
78	N.D.	N.D.	N.D.	260	N/A	N/A	N/A	N/A	N/A	N/A	符合 Conformity
79	N.D.	N.D.	N.D.	N.D.*	N/A	N/A	N/A	N/A	N/A	N/A	符合 Conformity
80	N.D.	N.D.	N.D.	N.D.	N.D.	N.D.	N.D.*	N.D.*	N.D.*	N.D.*	符合 Conformity
81	N.D.	N.D.	N.D.	N.D.	N.D.	N.D.	N.D.*	N.D.*	N.D.*	N.D.*	符合 Conformity
82	N.D.	N.D.	N.D.	N.D.	N.D.	N.D.	N.D.*	N.D.*	N.D.*	N.D.*	符合 Conformity
83	N.D.	N.D.	N.D.	N.D.	N.D.	N.D.	N.D.*	N.D.*	N.D.*	N.D.*	符合 Conformity
84	N.D.	N.D.	N.D.	N.D.	N.D.	N.D.	N.D.*	N.D.*	N.D.*	N.D.*	符合 Conformity
85	N.D.	N.D.	N.D.	N.D.	N.D.	N.D.	N.D.*	N.D.*	N.D.*	N.D.*	符合 Conformity
86	N.D.	N.D.	N.D.	N.D.	N/A	N/A	N/A	N/A	N/A	N/A	符合 Conformity
87	N.D.	N.D.	N.D.	N.D.	N/A	N/A	N/A	N/A	N/A	N/A	符合 Conformity
88	N.D.	N.D.	N.D.	N.D.	N.D.	N.D.	N.D.*	N.D.*	N.D.*	N.D.*	符合 Conformity
89	N.D.	N.D.	N.D.	N.D.	N.D.	N.D.	N.D.*	N.D.*	N.D.*	N.D.*	符合 Conformity

Any report having not been signed by authorized approver, or having been altered without authorization, or having not been stamped by the "Dedicated Testing/Inspection Stamp" is deemed to be invalid. Copying or excerpting portion of, or altering the content of the report is not permitted without the written authorization of AGC. The test results presented in the report apply only to the tested sample. Any objections to report issued by AGC should be submitted to AGC within 15days after the issuance of the test report. Further enquiry of validity or verification of the test report should be addressed to AGC by agc@agc-cert.com.



序号 No.	测试结果 Test result (mg/kg)										结论 Conclusion
	Pb	Cd	Hg	Cr <sup>6+</sup>	PBBs	PBDEs	DIBP	DBP	BBP	DEHP	
90	N.D.	N.D.	N.D.	N.D.	N.D.	N.D.	N.D.*	N.D.*	N.D.*	N.D.*	符合 Conformity
91	N.D.	N.D.	N.D.	N.D.	N.D.	N.D.	N.D.*	N.D.*	N.D.*	N.D.*	符合 Conformity
92	N.D.	N.D.	N.D.	N.D.*	N/A	N/A	N/A	N/A	N/A	N/A	符合 Conformity
93	N.D.	N.D.	N.D.	345	N/A	N/A	N/A	N/A	N/A	N/A	符合 Conformity
94	N.D.	N.D.	N.D.	N.D.	N/A	N/A	N/A	N/A	N/A	N/A	符合 Conformity
95	N.D.	N.D.	N.D.	N.D.	N.D.	N.D.	N.D.*	N.D.*	N.D.*	N.D.*	符合 Conformity
96	N.D.	N.D.	N.D.	N.D.	N.D.	N.D.	N.D.*	N.D.*	N.D.*	N.D.*	符合 Conformity
97	N.D.	N.D.	N.D.	N.D.	N.D.	N.D.	N.D.*	N.D.*	N.D.*	N.D.*	符合 Conformity
98	N.D.	N.D.	N.D.	N.D.	N.D.	N.D.	N.D.*	N.D.*	N.D.*	N.D.*	符合 Conformity
99	N.D.	N.D.	N.D.	N.D.	N.D.	N.D.	N.D.*	N.D.*	N.D.*	N.D.*	符合 Conformity
100	262	N.D.	N.D.	365	N/A	N/A	N/A	N/A	N/A	N/A	符合 Conformity
101	N.D.	N.D.	N.D.	553	N/A	N/A	N/A	N/A	N/A	N/A	符合 Conformity
102	206	N.D.	N.D.	N.D.*	N/A	N/A	N/A	N/A	N/A	N/A	符合 Conformity
103	N.D.	N.D.	N.D.	N.D.	N/A	N/A	N/A	N/A	N/A	N/A	符合 Conformity
104	N.D.	N.D.	N.D.	N.D.	N.D.	N.D.	N.D.*	N.D.*	N.D.*	N.D.*	符合 Conformity
105	N.D.	N.D.	N.D.	N.D.*	N/A	N/A	N/A	N/A	N/A	N/A	符合 Conformity
106	N.D.	N.D.	N.D.	N.D.*	N/A	N/A	N/A	N/A	N/A	N/A	符合 Conformity
107	N.D.	N.D.	N.D.	N.D.	N.D.	N.D.	N.D.*	N.D.*	N.D.*	N.D.*	符合 Conformity
108	N.D.	N.D.	N.D.	N.D.*	N/A	N/A	N/A	N/A	N/A	N/A	符合 Conformity
109	N.D.	N.D.	N.D.	N.D.	N/A	N/A	N/A	N/A	N/A	N/A	符合 Conformity
110	N.D.	N.D.	N.D.	N.D.	N.D.	N.D.	N.D.*	N.D.*	N.D.*	N.D.*	符合 Conformity
111	N.D.	N.D.	N.D.	N.D.	N/A	N/A	N/A	N/A	N/A	N/A	符合 Conformity
112	N.D.	N.D.	N.D.	N.D.	N.D.	N.D.	N.D.*	N.D.*	N.D.*	N.D.*	符合 Conformity

Any report having not been signed by authorized approver, or having been altered without authorization, or having not been stamped by the "Dedicated Testing/Inspection Stamp" is deemed to be invalid. Copying or excerpting portion of, or altering the content of the report is not permitted without the written authorization of AGC. The test results presented in the report apply only to the tested sample. Any objections to report issued by AGC should be submitted to AGC within 15days after the issuance of the test report. Further enquiry of validity or verification of the test report should be addressed to AGC by agc@agc-cert.com.



序号 No.	测试结果 Test result (mg/kg)										结论 Conclusion
	Pb	Cd	Hg	Cr <sup>6+</sup>	PBBs	PBDEs	DIBP	DBP	BBP	DEHP	
113	N.D.	N.D.	N.D.	N.D.	N.D.	N.D.	N.D.*	N.D.*	N.D.*	N.D.*	符合 Conformity
114	N.D.	N.D.	N.D.	N.D.	N/A	N/A	N/A	N/A	N/A	N/A	符合 Conformity
115	N.D.	N.D.	N.D.	N.D.	N/A	N/A	N/A	N/A	N/A	N/A	符合 Conformity
116	N.D.	N.D.	N.D.	N.D.	N.D.	N.D.	N.D.*	N.D.*	N.D.*	N.D.*	符合 Conformity
117	N.D.	N.D.	N.D.	N.D.	N.D.	N.D.	N.D.*	N.D.*	N.D.*	N.D.*	符合 Conformity
118	N.D.	N.D.	N.D.	202	N.D.	N.D.	N.D.*	N.D.*	N.D.*	N.D.*	符合 Conformity
119	N.D.	N.D.	N.D.	N.D.	N.D.	N.D.	N.D.*	N.D.*	N.D.*	N.D.*	符合 Conformity
120	N.D.	N.D.	N.D.	N.D.	N.D.	N.D.	N.D.*	N.D.*	N.D.*	N.D.*	符合 Conformity
121	N.D.	N.D.	N.D.	N.D.	N.D.	N.D.	N.D.*	N.D.*	N.D.*	N.D.*	符合 Conformity
122	N.D.	N.D.	N.D.	N.D.	N.D.	N.D.	N.D.*	N.D.*	N.D.*	N.D.*	符合 Conformity
123	N.D.	N.D.	N.D.	N.D.	N.D.	N.D.	N.D.*	N.D.*	N.D.*	N.D.*	符合 Conformity
124	N.D.	N.D.	N.D.	N.D.	N/A	N/A	N/A	N/A	N/A	N/A	符合 Conformity
125	N.D.	N.D.	N.D.	264	N/A	N/A	N/A	N/A	N/A	N/A	符合 Conformity
126	N.D.	N.D.	N.D.	N.D.	N/A	N/A	N/A	N/A	N/A	N/A	符合 Conformity
127	N.D.	N.D.	N.D.	250	N.D.*	N.D.*	N.D.*	N.D.*	N.D.*	N.D.*	符合 Conformity
128	N.D.	N.D.	N.D.	N.D.	N.D.	N.D.	N.D.*	N.D.*	N.D.*	N.D.*	符合 Conformity
129	N.D.	N.D.	N.D.	N.D.	N.D.	N.D.	N.D.*	N.D.*	N.D.*	N.D.*	符合 Conformity
130	N.D.	N.D.	N.D.	N.D.	N.D.	N.D.	N.D.*	N.D.*	N.D.*	N.D.*	符合 Conformity
131	N.D.	N.D.	N.D.	N.D.	N.D.	N.D.	N.D.*	N.D.*	N.D.*	N.D.*	符合 Conformity
132	N.D.	N.D.	N.D.	N.D.	N.D.	N.D.	N.D.*	N.D.*	N.D.*	N.D.*	符合 Conformity
133	N.D.	N.D.	N.D.	N.D.	N.D.	N.D.	N.D.*	N.D.*	N.D.*	N.D.*	符合 Conformity
134	N.D.	N.D.	N.D.	N.D.	N/A	N/A	N/A	N/A	N/A	N/A	符合 Conformity
135	N.D.	N.D.	N.D.	N.D.	N.D.	N.D.	N.D.*	N.D.*	N.D.*	N.D.*	符合 Conformity

Any report having not been signed by authorized approver, or having been altered without authorization, or having not been stamped by the "Dedicated Testing/Inspection Stamp" is deemed to be invalid. Copying or excerpting portion of, or altering the content of the report is not permitted without the written authorization of AGC. The test results presented in the report apply only to the tested sample. Any objections to report issued by AGC should be submitted to AGC within 15days after the issuance of the test report. Further enquiry of validity or verification of the test report should be addressed to AGC by agc@agc-cert.com.



序号 No.	测试结果 Test result (mg/kg)										结论 Conclusion
	Pb	Cd	Hg	Cr <sup>6+</sup>	PBBs	PBDEs	DIBP	DBP	BBP	DEHP	
136	N.D.	N.D.	N.D.	N.D.*	N/A	N/A	N/A	N/A	N/A	N/A	符合 Conformity
137	N.D.	N.D.	N.D.	N.D.	N.D.	N.D.	N.D.*	N.D.*	N.D.*	N.D.*	符合 Conformity
138	N.D.	N.D.	N.D.	N.D.	N/A	N/A	N/A	N/A	N/A	N/A	符合 Conformity
139	N.D.	N.D.	N.D.	377	N.D.	N.D.	N.D.*	N.D.*	N.D.*	N.D.*	符合 Conformity
140	N.D.	N.D.	N.D.	N.D.	N.D.	N.D.	N.D.*	N.D.*	N.D.*	N.D.*	符合 Conformity
141	N.D.	N.D.	N.D.	N.D.	N.D.	N.D.	N.D.*	N.D.*	N.D.*	N.D.*	符合 Conformity
142	N.D.	N.D.	N.D.	N.D.	N.D.	N.D.	N.D.*	N.D.*	N.D.*	N.D.*	符合 Conformity
143	N.D.	N.D.	N.D.	N.D.	N.D.	N.D.	N.D.*	N.D.*	N.D.*	N.D.*	符合 Conformity
144	N.D.	N.D.	N.D.	N.D.	N/A	N/A	N/A	N/A	N/A	N/A	符合 Conformity
145	N.D.	N.D.	N.D.	N.D.	N.D.	N.D.	N.D.*	N.D.*	N.D.*	N.D.*	符合 Conformity
146	N.D.	N.D.	N.D.	N.D.	N.D.	N.D.	N.D.*	N.D.*	N.D.*	N.D.*	符合 Conformity
147	N.D.	N.D.	N.D.	N.D.	N.D.	N.D.	N.D.*	N.D.*	N.D.*	N.D.*	符合 Conformity
148	N.D.	N.D.	N.D.	N.D.	N.D.	N.D.	N.D.*	N.D.*	N.D.*	N.D.*	符合 Conformity
149	N.D.	N.D.	N.D.	N.D.	N.D.	N.D.	N.D.*	N.D.*	N.D.*	N.D.*	符合 Conformity
150	N.D.	N.D.	N.D.	N.D.	N.D.*	N.D.*	N.D.*	N.D.*	N.D.*	N.D.*	符合 Conformity
151	N.D.	N.D.	N.D.	N.D.	N/A	N/A	N/A	N/A	N/A	N/A	符合 Conformity
152	N.D.	N.D.	N.D.	N.D.*	N/A	N/A	N/A	N/A	N/A	N/A	符合 Conformity
153	N.D.	N.D.	N.D.	N.D.	N.D.	N.D.	N.D.*	N.D.*	N.D.*	N.D.*	符合 Conformity
154	N.D.	N.D.	N.D.	N.D.	N.D.	N.D.	N.D.*	N.D.*	N.D.*	N.D.*	符合 Conformity
155	N.D.	N.D.	N.D.	N.D.	N/A	N/A	N/A	N/A	N/A	N/A	符合 Conformity
156	306	N.D.	N.D.	676	N/A	N/A	N/A	N/A	N/A	N/A	符合 Conformity
157	N.D.	N.D.	N.D.	N.D.	N.D.	N.D.	N.D.*	N.D.*	N.D.*	N.D.*	符合 Conformity
158	N.D.	N.D.	N.D.	N.D.	N/A	N/A	N/A	N/A	N/A	N/A	符合 Conformity

Any report having not been signed by authorized approver, or having been altered without authorization, or having not been stamped by the "Dedicated Testing/Inspection Stamp" is deemed to be invalid. Copying or excerpting portion of, or altering the content of the report is not permitted without the written authorization of AGC. The test results presented in the report apply only to the tested sample. Any objections to report issued by AGC should be submitted to AGC within 15days after the issuance of the test report. Further enquiry of validity or verification of the test report should be addressed to AGC by agc@agc-cert.com.





序号 No.	测试结果 Test result (mg/kg)										结论 Conclusion
	Pb	Cd	Hg	Cr <sup>6+</sup>	PBBs	PBDEs	DIBP	DBP	BBP	DEHP	
159	N.D.	N.D.	N.D.	N.D.	N.D.	N.D.	N.D.*	N.D.*	N.D.*	N.D.*	符合 Conformity
160	N.D.	N.D.	N.D.	N.D.	N.D.	N.D.	N.D.*	N.D.*	N.D.*	N.D.*	符合 Conformity
161	N.D.	N.D.	N.D.	N.D.	N.D.	N.D.	N.D.*	N.D.*	N.D.*	N.D.*	符合 Conformity
162	N.D.	N.D.	N.D.	N.D.	N.D.	N.D.	N.D.*	N.D.*	N.D.*	N.D.*	符合 Conformity
163	N.D.	N.D.	N.D.	N.D.	N.D.	N.D.	N.D.*	N.D.*	N.D.*	N.D.*	符合 Conformity
164	N.D.	N.D.	N.D.	N.D.	N.D.	N.D.	N.D.*	N.D.*	N.D.*	N.D.*	符合 Conformity
165	N.D.	N.D.	N.D.	N.D.	N.D.*	N.D.*	N.D.*	N.D.*	N.D.*	N.D.*	符合 Conformity
166	N.D.	N.D.	N.D.	N.D.	N/A	N/A	N/A	N/A	N/A	N/A	符合 Conformity
167	N.D.	N.D.	N.D.	N.D.	N.D.	N.D.	N.D.*	N.D.*	N.D.*	N.D.*	符合 Conformity
168	N.D.	N.D.	N.D.	N.D.	N/A	N/A	N/A	N/A	N/A	N/A	符合 Conformity
169	N.D.	N.D.	N.D.	N.D.	N.D.	N.D.	N.D.*	N.D.*	N.D.*	N.D.*	符合 Conformity
170	N.D.	N.D.	N.D.	N.D.	N/A	N/A	N/A	N/A	N/A	N/A	符合 Conformity
171	N.D.	N.D.	N.D.	N.D.	N.D.	N.D.	N.D.*	N.D.*	N.D.*	N.D.*	符合 Conformity
172	N.D.	N.D.	N.D.	N.D.	N.D.*	N.D.*	N.D.*	N.D.*	N.D.*	N.D.*	符合 Conformity
173	N.D.	N.D.	N.D.	N.D.	N.D.	N.D.	N.D.*	N.D.*	N.D.*	N.D.*	符合 Conformity
174	N.D.	N.D.	N.D.	N.D.	N.D.	N.D.	N.D.*	N.D.*	N.D.*	N.D.*	符合 Conformity
175	N.D.	N.D.	N.D.	N.D.	N.D.	N.D.	N.D.*	N.D.*	N.D.*	N.D.*	符合 Conformity
176	22858*	N.D.	N.D.	N.D.	N/A	N/A	N/A	N/A	N/A	N/A	符合 Conformity
177	28649*	N.D.	N.D.	N.D.	N/A	N/A	N/A	N/A	N/A	N/A	符合 Conformity
178	N.D.	N.D.	N.D.	N.D.	N.D.	N.D.	N.D.*	N.D.*	N.D.*	N.D.*	符合 Conformity
179	N.D.	N.D.	N.D.	N.D.	N/A	N/A	N/A	N/A	N/A	N/A	符合 Conformity
180	N.D.	N.D.	N.D.	N.D.	N.D.	N.D.	N.D.*	N.D.*	N.D.*	N.D.*	符合 Conformity
181	349	N.D.	N.D.	242	N/A	N/A	N/A	N/A	N/A	N/A	符合 Conformity

Any report having not been signed by authorized approver, or having been altered without authorization, or having not been stamped by the "Dedicated Testing/Inspection Stamp" is deemed to be invalid. Copying or excerpting portion of, or altering the content of the report is not permitted without the written authorization of AGC. The test results presented in the report apply only to the tested sample. Any objections to report issued by AGC should be submitted to AGC within 15days after the issuance of the test report. Further enquiry of validity or verification of the test report should be addressed to AGC by agc@agc-cert.com.



序号 No.	测试结果 Test result (mg/kg)										结论 Conclusion
	Pb	Cd	Hg	Cr <sup>6+</sup>	PBBs	PBDEs	DIBP	DBP	BBP	DEHP	
182	N.D.	N.D.	N.D.	N.D.	N.D.	N.D.	N.D.*	N.D.*	N.D.*	N.D.*	符合 Conformity
183	N.D.	N.D.	N.D.	N.D.	N.D.	N.D.	N.D.*	N.D.*	N.D.*	N.D.*	符合 Conformity
184	N.D.	N.D.	N.D.	N.D.	N.D.	N.D.	N.D.*	N.D.*	N.D.*	N.D.*	符合 Conformity
185	N.D.	N.D.	N.D.	N.D.	N.D.	N.D.	N.D.*	N.D.*	N.D.*	N.D.*	符合 Conformity
186	N.D.	N.D.	N.D.	N.D.	N.D.	N.D.	N.D.*	N.D.*	N.D.*	N.D.*	符合 Conformity
187	N.D.	N.D.	N.D.	N.D.	N/A	N/A	N/A	N/A	N/A	N/A	符合 Conformity
188	N.D.	N.D.	N.D.	N.D.	N.D.	N.D.	N.D.*	N.D.*	N.D.*	N.D.*	符合 Conformity
189	N.D.	N.D.	N.D.	N.D.	N.D.	N.D.	N.D.*	N.D.*	N.D.*	N.D.*	符合 Conformity
190	N.D.	N.D.	N.D.	N.D.	N.D.	N.D.	N.D.*	N.D.*	N.D.*	N.D.*	符合 Conformity
191	N.D.	N.D.	N.D.	N.D.	N.D.	N.D.	N.D.*	N.D.*	N.D.*	N.D.*	符合 Conformity
192	N.D.	N.D.	N.D.	N.D.	N/A	N/A	N/A	N/A	N/A	N/A	符合 Conformity
193	N.D.	N.D.	N.D.	N.D.	N.D.*	N.D.*	N.D.*	N.D.*	N.D.*	N.D.*	符合 Conformity
194	N.D.	N.D.	N.D.	N.D.	N/A	N/A	N/A	N/A	N/A	N/A	符合 Conformity
195	N.D.	N.D.	N.D.	N.D.	N/A	N/A	N/A	N/A	N/A	N/A	符合 Conformity
196	N.D.	N.D.	N.D.	N.D.	N.D.	N.D.	N.D.*	N.D.*	N.D.*	N.D.*	符合 Conformity
197	N.D.	N.D.	N.D.	N.D.	N.D.	N.D.	N.D.*	N.D.*	N.D.*	N.D.*	符合 Conformity
198	N.D.	N.D.	N.D.	N.D.	N.D.	N.D.	N.D.*	N.D.*	N.D.*	N.D.*	符合 Conformity
199	211	N.D.	N.D.	N.D.	N/A	N/A	N/A	N/A	N/A	N/A	符合 Conformity
200	N.D.	N.D.	N.D.	N.D.*	N/A	N/A	N/A	N/A	N/A	N/A	符合 Conformity
201	N.D.	N.D.	N.D.	N.D.	N/A	N/A	N/A	N/A	N/A	N/A	符合 Conformity
202	N.D.	N.D.	N.D.	N.D.	N/A	N/A	N/A	N/A	N/A	N/A	符合 Conformity
203	363	N.D.	459	N.D.	N.D.*	N.D.*	N.D.*	N.D.*	N.D.*	N.D.*	符合 Conformity
204	N.D.	N.D.	N.D.	N.D.	N.D.	N.D.	N.D.*	N.D.*	N.D.*	N.D.*	符合 Conformity

Any report having not been signed by authorized approver, or having been altered without authorization, or having not been stamped by the "Dedicated Testing/Inspection Stamp" is deemed to be invalid. Copying or excerpting portion of, or altering the content of the report is not permitted without the written authorization of AGC. The test results presented in the report apply only to the tested sample. Any objections to report issued by AGC should be submitted to AGC within 15days after the issuance of the test report. Further enquiry of validity or verification of the test report should be addressed to AGC by agc@agc-cert.com.



序号 No.	测试结果 Test result (mg/kg)										结论 Conclusion
	Pb	Cd	Hg	Cr <sup>6+</sup>	PBBs	PBDEs	DIBP	DBP	BBP	DEHP	
205	N.D.	N.D.	N.D.	N.D.	288	288	N.D.*	N.D.*	N.D.*	N.D.*	符合 Conformity
206	N.D.	N.D.	N.D.	N.D.	N.D.	N.D.	N.D.*	N.D.*	N.D.*	N.D.*	符合 Conformity
207	N.D.	N.D.	N.D.	N.D.	N/A	N/A	N/A	N/A	N/A	N/A	符合 Conformity
208	N.D.	N.D.	N.D.	N.D.	N.D.	N.D.	N.D.*	N.D.*	N.D.*	N.D.*	符合 Conformity
209	N.D.	N.D.	N.D.	N.D.	N.D.	N.D.	N.D.*	N.D.*	N.D.*	N.D.*	符合 Conformity
210	N.D.	N.D.	N.D.	N.D.	N.D.	N.D.	N.D.*	N.D.*	N.D.*	N.D.*	符合 Conformity
211	N.D.	N.D.	N.D.	N.D.	N.D.	N.D.	N.D.*	N.D.*	N.D.*	N.D.*	符合 Conformity
212	N.D.	N.D.	N.D.	N.D.*	N/A	N/A	N/A	N/A	N/A	N/A	符合 Conformity
213	N.D.	N.D.	N.D.	N.D.	N.D.	N.D.	N.D.*	N.D.*	N.D.*	N.D.*	符合 Conformity
214	N.D.	N.D.	N.D.	N.D.	N.D.	N.D.	N.D.*	N.D.*	N.D.*	N.D.*	符合 Conformity
215	N.D.	N.D.	N.D.	N.D.	N.D.	N.D.	N.D.*	N.D.*	N.D.*	N.D.*	符合 Conformity
216	N.D.	N.D.	N.D.	N.D.	N.D.	N.D.	N.D.*	N.D.*	N.D.*	N.D.*	符合 Conformity
217	23248*	N.D.	N.D.	N.D.	N/A	N/A	N/A	N/A	N/A	N/A	符合 Conformity
218	N.D.	N.D.	N.D.	N.D.	N/A	N/A	N/A	N/A	N/A	N/A	符合 Conformity
219	N.D.	N.D.	N.D.	N.D.*	N/A	N/A	N/A	N/A	N/A	N/A	符合 Conformity
220	N.D.	N.D.	N.D.	N.D.	N/A	N/A	N/A	N/A	N/A	N/A	符合 Conformity
221	N.D.	N.D.	N.D.	N.D.	N.D.	N.D.	N.D.*	N.D.*	N.D.*	N.D.*	符合 Conformity
222	N.D.	N.D.	N.D.	N.D.	N.D.	N.D.	N.D.*	N.D.*	N.D.*	N.D.*	符合 Conformity
223	N.D.	N.D.	N.D.	N.D.	N.D.	N.D.	N.D.*	N.D.*	N.D.*	N.D.*	符合 Conformity
224	N.D.	N.D.	N.D.	N.D.	N.D.	N.D.	N.D.*	N.D.*	N.D.*	N.D.*	符合 Conformity
225	N.D.	N.D.	N.D.	N.D.	N.D.	N.D.	N.D.*	N.D.*	N.D.*	N.D.*	符合 Conformity
226	N.D.	N.D.	N.D.	N.D.	N.D.	N.D.	N.D.*	N.D.*	N.D.*	N.D.*	符合 Conformity
227	N.D.	N.D.	N.D.	N.D.	N.D.	N.D.	N.D.*	N.D.*	N.D.*	N.D.*	符合 Conformity

Any report having not been signed by authorized approver, or having been altered without authorization, or having not been stamped by the "Dedicated Testing/Inspection Stamp" is deemed to be invalid. Copying or excerpting portion of, or altering the content of the report is not permitted without the written authorization of AGC. The test results presented in the report apply only to the tested sample. Any objections to report issued by AGC should be submitted to AGC within 15days after the issuance of the test report. Further enquiry of validity or verification of the test report should be addressed to AGC by agc@agc-cert.com.



序号 No.	测试结果 Test result (mg/kg)										结论 Conclusion
	Pb	Cd	Hg	Cr <sup>6+</sup>	PBBs	PBDEs	DIBP	DBP	BBP	DEHP	
228	211	N.D.	N.D.	N.D.	N/A	N/A	N/A	N/A	N/A	N/A	符合 Conformity
229	N.D.	N.D.	N.D.	N.D.	N.D.	N.D.	N.D.*	N.D.*	N.D.*	N.D.*	符合 Conformity
230	N.D.	N.D.	N.D.	N.D.	N.D.	N.D.	N.D.*	N.D.*	N.D.*	N.D.*	符合 Conformity
231	N.D.	N.D.	N.D.	N.D.	N.D.	N.D.	N.D.*	N.D.*	N.D.*	N.D.*	符合 Conformity
232	N.D.	N.D.	N.D.	N.D.	N/A	N/A	N/A	N/A	N/A	N/A	符合 Conformity
233	N.D.	N.D.	N.D.	N.D.	N.D.	N.D.	N.D.*	N.D.*	N.D.*	N.D.*	符合 Conformity
234	N.D.	N.D.	N.D.	N.D.	N/A	N/A	N/A	N/A	N/A	N/A	符合 Conformity
235	N.D.	N.D.	N.D.	N.D.	N.D.	N.D.	N.D.*	N.D.*	N.D.*	N.D.*	符合 Conformity
236	N.D.	N.D.	N.D.	N.D.	N/A	N/A	N/A	N/A	N/A	N/A	符合 Conformity
237	N.D.	N.D.	N.D.	N.D.	N.D.	N.D.	N.D.*	N.D.*	N.D.*	N.D.*	符合 Conformity
238	N.D.	N.D.	N.D.	296	N.D.	N.D.	N.D.*	N.D.*	N.D.*	N.D.*	符合 Conformity
239	N.D.	N.D.	N.D.	671	N/A	N/A	N/A	N/A	N/A	N/A	符合 Conformity
240	N.D.	N.D.	N.D.	N.D.	N.D.	N.D.	N.D.*	N.D.*	N.D.*	N.D.*	符合 Conformity
241	N.D.	N.D.	N.D.	N.D.	N.D.	N.D.	N.D.*	N.D.*	N.D.*	N.D.*	符合 Conformity
242	N.D.	N.D.	N.D.	N.D.	N/A	N/A	N/A	N/A	N/A	N/A	符合 Conformity
243	N.D.	N.D.	N.D.	N.D.	N/A	N/A	N/A	N/A	N/A	N/A	符合 Conformity
244	N.D.	N.D.	N.D.	N.D.	N/A	N/A	N/A	N/A	N/A	N/A	符合 Conformity
245	N.D.	N.D.	N.D.	N.D.	N/A	N/A	N/A	N/A	N/A	N/A	符合 Conformity
246	N.D.	N.D.	N.D.	N.D.	N.D.	N.D.	N.D.*	N.D.*	N.D.*	N.D.*	符合 Conformity
247	N.D.	N.D.	N.D.	N.D.	N.D.	N.D.	N.D.*	N.D.*	N.D.*	N.D.*	符合 Conformity
248	N.D.	N.D.	N.D.	N.D.	N.D.	N.D.	N.D.*	N.D.*	N.D.*	N.D.*	符合 Conformity
249	N.D.	N.D.	N.D.	N.D.	N/A	N/A	N/A	N/A	N/A	N/A	符合 Conformity
250	N.D.	N.D.	N.D.	N.D.	N.D.	N.D.	N.D.*	N.D.*	N.D.*	N.D.*	符合 Conformity

Any report having not been signed by authorized approver, or having been altered without authorization, or having not been stamped by the "Dedicated Testing/Inspection Stamp" is deemed to be invalid. Copying or excerpting portion of, or altering the content of the report is not permitted without the written authorization of AGC. The test results presented in the report apply only to the tested sample. Any objections to report issued by AGC should be submitted to AGC within 15days after the issuance of the test report. Further enquiry of validity or verification of the test report should be addressed to AGC by agc@agc-cert.com.



序号 No.	测试结果 Test result (mg/kg)										结论 Conclusion
	Pb	Cd	Hg	Cr <sup>6+</sup>	PBBs	PBDEs	DIBP	DBP	BBP	DEHP	
251	N.D.	N.D.	N.D.	N.D.	N/A	N/A	N/A	N/A	N/A	N/A	符合 Conformity
252	N.D.	N.D.	N.D.	N.D.	N/A	N/A	N/A	N/A	N/A	N/A	符合 Conformity
253	N.D.	N.D.	N.D.	N.D.	N.D.	N.D.	N.D.*	N.D.*	N.D.*	N.D.*	符合 Conformity
254	N.D.	N.D.	N.D.	N.D.	N/A	N/A	N/A	N/A	N/A	N/A	符合 Conformity
255	N.D.	N.D.	N.D.	N.D.	N/A	N/A	N/A	N/A	N/A	N/A	符合 Conformity
256	N.D.	N.D.	N.D.	N.D.	N.D.	N.D.	N.D.*	N.D.*	N.D.*	N.D.*	符合 Conformity
257	N.D.	N.D.	N.D.	N.D.	N.D.	N.D.	N.D.*	N.D.*	N.D.*	N.D.*	符合 Conformity
258	N.D.	N.D.	N.D.	N.D.	N.D.	N.D.	N.D.*	N.D.*	N.D.*	N.D.*	符合 Conformity
259	N.D.	N.D.	N.D.	N.D.	N/A	N/A	N/A	N/A	N/A	N/A	符合 Conformity
260	N.D.	N.D.	N.D.	N.D.	N.D.	N.D.	N.D.*	N.D.*	N.D.*	N.D.*	符合 Conformity
261	N.D.	N.D.	N.D.	N.D.	N.D.	N.D.	N.D.*	N.D.*	N.D.*	N.D.*	符合 Conformity
262	N.D.	N.D.	N.D.	N.D.	N.D.	N.D.	N.D.*	N.D.*	N.D.*	N.D.*	符合 Conformity
263	N.D.	N.D.	N.D.	N.D.	N.D.	N.D.	N.D.*	N.D.*	N.D.*	N.D.*	符合 Conformity
264	34235*	N.D.	N.D.	N.D.	N/A	N/A	N/A	N/A	N/A	N/A	符合 Conformity
265	N.D.	N.D.	N.D.	N.D.	N.D.	N.D.	N.D.*	N.D.*	N.D.*	N.D.*	符合 Conformity
266	N.D.	N.D.	N.D.	N.D.	N.D.	N.D.	N.D.*	N.D.*	N.D.*	N.D.*	符合 Conformity
267	N.D.	N.D.	N.D.	N.D.	N.D.	N.D.	N.D.*	N.D.*	N.D.*	N.D.*	符合 Conformity
268	N.D.	N.D.	N.D.	N.D.	N.D.	N.D.	N.D.*	N.D.*	N.D.*	N.D.*	符合 Conformity
269	N.D.	N.D.	N.D.	N.D.	N.D.	N.D.	N.D.*	N.D.*	N.D.*	N.D.*	符合 Conformity
270	N.D.	N.D.	N.D.	N.D.	N/A	N/A	N/A	N/A	N/A	N/A	符合 Conformity
271	N.D.	N.D.	N.D.	N.D.	N/A	N/A	N/A	N/A	N/A	N/A	符合 Conformity
272	N.D.	N.D.	N.D.	N.D.	N.D.*	N.D.*	N.D.*	N.D.*	N.D.*	N.D.*	符合 Conformity
273	N.D.	N.D.	N.D.	N.D.	N.D.	N.D.	N.D.*	N.D.*	N.D.*	N.D.*	符合 Conformity

Any report having not been signed by authorized approver, or having been altered without authorization, or having not been stamped by the "Dedicated Testing/Inspection Stamp" is deemed to be invalid. Copying or excerpting portion of, or altering the content of the report is not permitted without the written authorization of AGC. The test results presented in the report apply only to the tested sample. Any objections to report issued by AGC should be submitted to AGC within 15days after the issuance of the test report. Further enquiry of validity or verification of the test report should be addressed to AGC by agc@agc-cert.com.



序号 No.	测试结果 Test result (mg/kg)										结论 Conclusion
	Pb	Cd	Hg	Cr <sup>6+</sup>	PBBs	PBDEs	DIBP	DBP	BBP	DEHP	
274	N.D.	N.D.	N.D.	N.D.	N.D.	N.D.	N.D.*	N.D.*	N.D.*	N.D.*	符合 Conformity
275	N.D.	N.D.	N.D.	N.D.	N.D.	N.D.	N.D.*	N.D.*	N.D.*	N.D.*	符合 Conformity
276	N.D.	N.D.	N.D.	N.D.	N.D.	N.D.	N.D.*	N.D.*	N.D.*	N.D.*	符合 Conformity
277	N.D.	N.D.	N.D.	N.D.	N.D.	N.D.	N.D.*	N.D.*	N.D.*	N.D.*	符合 Conformity
278	N.D.	N.D.	N.D.	N.D.	N.D.	N.D.	N.D.*	N.D.*	N.D.*	N.D.*	符合 Conformity
279	N.D.	N.D.	N.D.	N.D.	N/A	N/A	N/A	N/A	N/A	N/A	符合 Conformity
280	N.D.	N.D.	N.D.	N.D.	N/A	N/A	N/A	N/A	N/A	N/A	符合 Conformity
281	N.D.	N.D.	N.D.	N.D.	N.D.	N.D.	N.D.*	N.D.*	N.D.*	N.D.*	符合 Conformity
282	N.D.	N.D.	N.D.	N.D.	N/A	N/A	N/A	N/A	N/A	N/A	符合 Conformity
283	N.D.	N.D.	N.D.	N.D.	N.D.	N.D.	N.D.*	N.D.*	N.D.*	N.D.*	符合 Conformity
284	300	N.D.	N.D.	N.D.	N/A	N/A	N/A	N/A	N/A	N/A	符合 Conformity
285	N.D.	N.D.	N.D.	N.D.	N.D.	N.D.	N.D.*	N.D.*	N.D.*	N.D.*	符合 Conformity
286	N.D.	N.D.	N.D.	499	N/A	N/A	N/A	N/A	N/A	N/A	符合 Conformity
287	N.D.	N.D.	N.D.	N.D.	N.D.	N.D.	N.D.*	N.D.*	N.D.*	N.D.*	符合 Conformity
288	N.D.	N.D.	N.D.	N.D.	N.D.	N.D.	N.D.*	N.D.*	N.D.*	N.D.*	符合 Conformity
289	322	N.D.	N.D.	N.D.	N/A	N/A	N/A	N/A	N/A	N/A	符合 Conformity
290	N.D.	N.D.	N.D.	N.D.	N.D.	N.D.	N.D.*	N.D.*	N.D.*	N.D.*	符合 Conformity
291	N.D.	N.D.	N.D.	N.D.	N.D.	N.D.	N.D.*	N.D.*	N.D.*	N.D.*	符合 Conformity
292	N.D.	N.D.	N.D.	N.D.	N.D.	N.D.	N.D.*	N.D.*	N.D.*	N.D.*	符合 Conformity
293	N.D.	N.D.	N.D.	N.D.	N.D.	N.D.	N.D.*	N.D.*	N.D.*	N.D.*	符合 Conformity
294	N.D.	N.D.	N.D.	N.D.	N.D.	N.D.	N.D.*	N.D.*	N.D.*	N.D.*	符合 Conformity
295	N.D.	N.D.	N.D.	223	N.D.	N.D.	N.D.*	N.D.*	N.D.*	N.D.*	符合 Conformity
296	N.D.	N.D.	N.D.	N.D.	N/A	N/A	N/A	N/A	N/A	N/A	符合 Conformity

Any report having not been signed by authorized approver, or having been altered without authorization, or having not been stamped by the "Dedicated Testing/Inspection Stamp" is deemed to be invalid. Copying or excerpting portion of, or altering the content of the report is not permitted without the written authorization of AGC. The test results presented in the report apply only to the tested sample. Any objections to report issued by AGC should be submitted to AGC within 15days after the issuance of the test report. Further enquiry of validity or verification of the test report should be addressed to AGC by agc@agc-cert.com.



序号 No.	测试结果 Test result (mg/kg)										结论 Conclusion
	Pb	Cd	Hg	Cr <sup>6+</sup>	PBBs	PBDEs	DIBP	DBP	BBP	DEHP	
297	N.D.	N.D.	N.D.	N.D.	N.D.	N.D.	N.D.*	N.D.*	N.D.*	N.D.*	符合 Conformity
298	N.D.	N.D.	N.D.	N.D.	N.D.	N.D.	N.D.*	N.D.*	N.D.*	N.D.*	符合 Conformity
299	N.D.	N.D.	N.D.	N.D.	N/A	N/A	N/A	N/A	N/A	N/A	符合 Conformity
300	N.D.	N.D.	N.D.	N.D.	N.D.	N.D.	N.D.*	N.D.*	N.D.*	N.D.*	符合 Conformity
301	N.D.	N.D.	N.D.	N.D.	N/A	N/A	N/A	N/A	N/A	N/A	符合 Conformity
302	N.D.	N.D.	N.D.	N.D.	N/A	N/A	N/A	N/A	N/A	N/A	符合 Conformity
303	N.D.	N.D.	N.D.	N.D.	N/A	N/A	N/A	N/A	N/A	N/A	符合 Conformity
304	N.D.	N.D.	N.D.	N.D.	N.D.	N.D.	N.D.*	N.D.*	N.D.*	N.D.*	符合 Conformity

**注释 Note:**

mg/kg =毫克每千克 (milligram per kilogram)

μg/cm<sup>2</sup> =微克每平方厘米 (microgram per square centimeter)

N.D.= 未检出 (小于方法检出限) (Not Detected (less than method detection limit))

N/A=不适用 (Not applicable)

MDL =方法检出限 Method Detection Limit

**豁免项目 Exemption**

序号 Seq. No	豁免条款 Exemption clause	内容 Content
8 176 177 217 264	6(c)	铜合金中的铅含量不应该超过 4% Copper alloy containing up to 4% lead by weight

Any report having not been signed by authorized approver, or having been altered without authorization, or having not been stamped by the "Dedicated Testing/Inspection Stamp" is deemed to be invalid. Copying or excerpting portion of, or altering the content of the report is not permitted without the written authorization of AGC. The test results presented in the report apply only to the tested sample. Any objections to report issued by AGC should be submitted to AGC within 15days after the issuance of the test report. Further enquiry of validity or verification of the test report should be addressed to AGC by agc@agc-cert.com.

Attestation of Global Compliance(Shenzhen)Co., Ltd

Attestation of Global Compliance(Shenzhen)Std & Tech Co., Ltd

Tel: +86-755 2523 4088 E-mail: agc@agc-cert.com Web: http://cn.agc-cert.com/



**备注 Remark:**

- \*表示报告结果采用湿化学法。其他的则由X射线荧光。对于X射线荧光筛选，Cr VI的结果报告为总铬，而多溴联苯和多溴二苯醚报告为总溴。此外，XRF扫描结果可能基于各种因素与实际含量有所不同，包括但不限于样品尺寸、厚度、面积、不均匀性成分，表面平整度。

\*denotes as reported result(s) was (were) performed by wet chemistry method. Others were screened by XRF. For XRF screening, the result(s) of Cr VI was (were) reported as total chromium and the result(s) of PBBs and PBDEs was (were) reported as total bromine. Also, the XRF result(s) may be different to the actual content based on various factors including, but not limit to, sample size, thickness, area, nonuniformity composition, surface flatness.

- XRF 扫描报告仅供参考，申请者必须自己确认本 XRF 扫描报告所提供的信息能满足/他/她的用途。

基于不同的因素，本 XRF 扫描报告显示结果有所不同，包括但不限于样品的尺寸、厚度、面积、表面光滑度、设备参数和基体效应(例如塑胶、橡胶、金属、玻璃、陶瓷等等)。为获得数据资料，要求有相关化学分析设备作进一步湿化学预处理。

This XRF Scanning report is for reference purposes only. The applicant shall make its/his/her own judgment as to whether the information provided in this XRF screening report is sufficient for its/his/her purposes.

The result shown in this XRF scanning report will differ based on various factors, including but not limited to, the sample size, thickness, area, surface flatness, equipment parameters and matrix effect (e.g. plastic, rubber, metal, glass, ceramic etc.). Further wet chemical pre-treatment with relevant chemical equipment analysis are required to obtain quantitative data.

- Boiling-water-extraction 沸水提取：（X represents the results of the tested sample / X 为待测样品结果）

Number 序号	Colorimetric result (Cr(VI) concentration) 比色结果(铬(VI)浓度)	Judgement 判定
1	$X < 0.1 \mu\text{g}/\text{cm}^2$	Negative 阴性
2	$0.1 \mu\text{g}/\text{cm}^2 \leq X \leq 0.13 \mu\text{g}/\text{cm}^2$	Uncertainty 不确定
3	$X > 0.13 \mu\text{g}/\text{cm}^2$	Positive 阳性

- Negative indicates the absence of Cr(VI) on the tested areas concentration is below the limit of quantification. The coating is considered a non-Cr(VI) based coating. 阴性表明测试区域内六价铬含量低于定量极限，认定镀层不存在六价铬；

Uncertainty indicates the absence of Cr(VI) on the tested areas unavoidable coating variations may influence the determination. 不确定表明测试区域镀层六价铬的不可避免的变化影响结果判定，导致无法判定结果；

Positive indicates the presence of Cr(VI) on the tested areas concentration is above the limit of quantification and the statistical margin of error. The sample coating is considered to contain Cr(VI). 阳性表明测试区域内六价铬含量高于于定量极限，认定镀层含有六价铬；

Storage conditions and production date of the tested sample are unavailable and thus result of Cr(VI) represent status of the sample at the time of testing. 由于未获知样品的存储条件和生产日期、样品的六价铬测试结果仅代表测试时样品的状态。

Any report having not been signed by authorized approver, or having been altered without authorization, or having not been stamped by the "Dedicated Testing/Inspection Stamp" is deemed to be invalid. Copying or excerpting portion of, or altering the content of the report is not permitted without the written authorization of AGC. The test results presented in the report apply only to the tested sample. Any objections to report issued by AGC should be submitted to AGC within 15 days after the issuance of the test report. Further enquiry of validity or verification of the test report should be addressed to AGC by agc@agc-cert.com.





## 附件 Appendix:

测试项目 Test Item	测试方法/仪器 Test Method/ Instrument	方法检出限 MDL	最大限值 Maximum Limit
<b>X 射线荧光光谱法 X-ray Fluorescence Spectrometry (XRF)</b>			
铅 Lead (Pb)	IEC 62321-3-1:2013 / XRF	200mg/kg	1000mg/kg
镉 Cadmium (Cd)		50mg/kg	100mg/kg
汞 Mercury (Hg)		200mg/kg	1000mg/kg
总铬 Total Chromium		200mg/kg	/
总溴 Total Bromine		200mg/kg	/
<b>湿化学法 Wet Chemistry Method</b>			
铅 Lead (Pb)	IEC 62321-5:2013/ ICP-OES	10mg/kg	1000mg/kg
镉 Cadmium (Cd)	IEC 62321-5:2013/ ICP-OES	10mg/kg	100mg/kg
汞 Mercury (Hg)	IEC 62321-4: 2013+A1:2017/ ICP-OES	10mg/kg	1000mg/kg
非金属: 六价铬 (Cr <sup>6+</sup> ) Non-metal Hexavalent Chromium (Cr <sup>6+</sup> )	IEC 62321-7-2:2017/ UV-Vis	8mg/kg	1000mg/kg
金属: 六价铬 (Cr <sup>6+</sup> ) Metal Hexavalent Chromium (Cr <sup>6+</sup> )	IEC 62321-7-1:2015/ UV-Vis	0.1µg/cm <sup>2</sup>	/
多溴联苯(PBBs) Polybrominated Biphenyls (PBBs) - 一溴联苯(MonoBB) -Monobromobiphenyl (MonoBB) - 二溴联苯(DiBB) -Dibromobiphenyl (DiBB) - 三溴联苯(TriBB) -Tribromobiphenyl (TriBB) - 四溴联苯(TetraBB) -Tetrabromobiphenyl (TetraBB) - 五溴联苯(PentaBB) -Pentabromobiphenyl (PentaBB) - 六溴联苯(HexaBB) -Hexabromobiphenyl (HexaBB) - 七溴联苯(HeptaBB) -Heptabromobiphenyl (HeptaBB) - 八溴联苯(OctaBB) -Octabromobiphenyl (OctaBB) - 九溴联苯(NonaBB) -Nonabromodiphenyl (NonaBB) - 十溴联苯(DecaBB) -Decabromodiphenyl (DecaBB)	IEC 62321-6:2015/ GC-MS	单项 Single 5mg/kg	总和 Sum 1000mg/kg

Any report having not been signed by authorized approver, or having been altered without authorization, or having not been stamped by the "Dedicated Testing/Inspection Stamp" is deemed to be invalid. Copying or excerpting portion of, or altering the content of the report is not permitted without the written authorization of AGC. The test results presented in the report apply only to the tested sample. Any objections to report issued by AGC should be submitted to AGC within 15days after the issuance of the test report. Further enquiry of validity or verification of the test report should be addressed to AGC by agc@agc-cert.com.



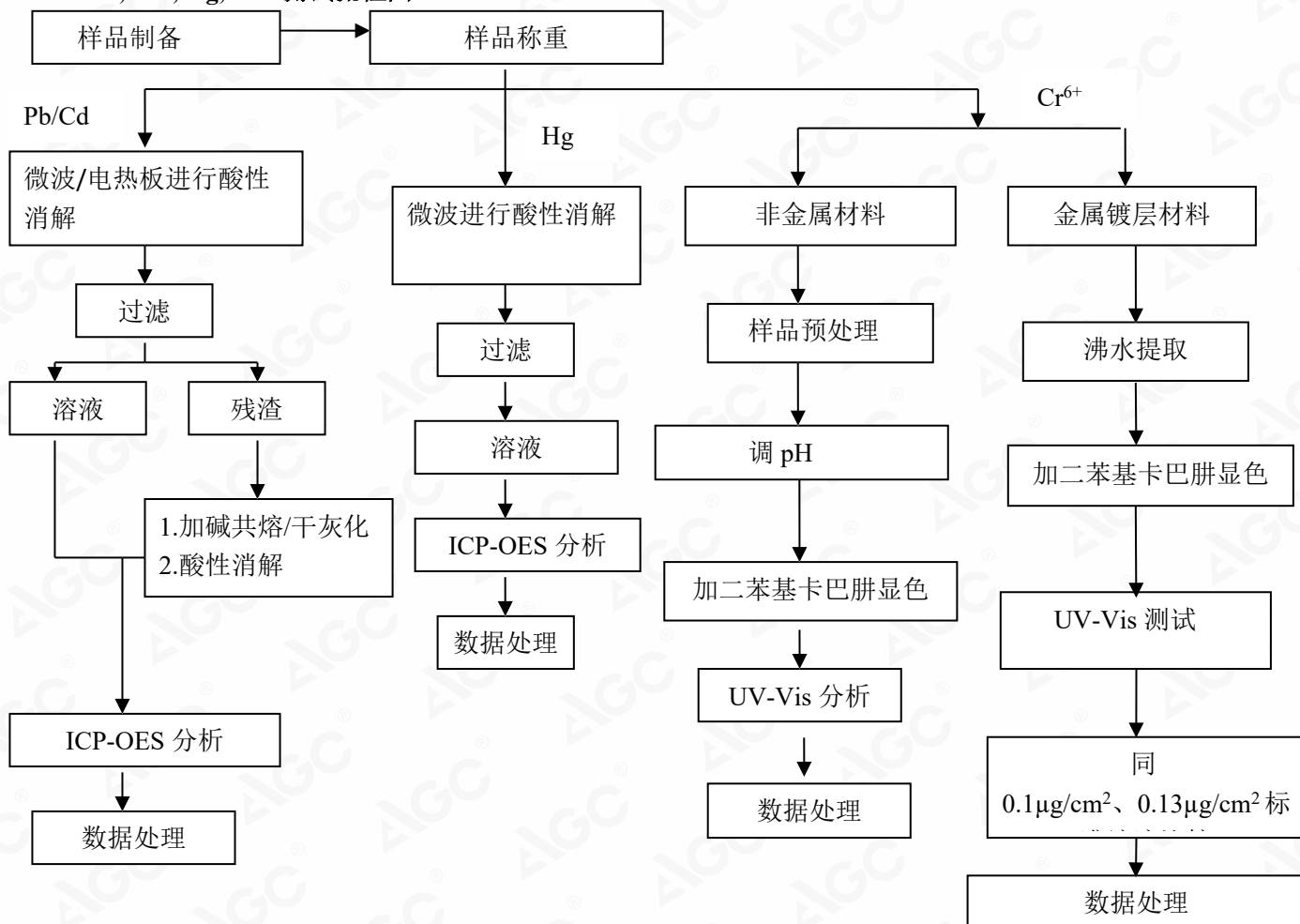
测试项目 Test Item	测试方法/仪器 Test Method/ Instrument	方法检出限 MDL	最大限值 Maximum Limit
多溴二苯醚 (PBDEs) Polybrominated Diphenylethers (PBDEs) - 一溴二苯醚(MonoBDE) - Monobromodiphenyl ether (MonoBDE) - 二溴二苯醚(DiBDE) - Dibromodiphenyl ether (DiBDE) - 三溴二苯醚(TriBDE) - Tribromodiphenyl ether (TriBDE) - 四溴二苯醚(TetraBDE) - Tetrabromodiphenyl ether (TetraBDE) - 五溴二苯醚(PentaBDE) - Pentabromodiphenyl ether (PentaBDE) - 六溴二苯醚(HexaBDE) - Hexabromodiphenyl ether (HexaBDE) - 七溴二苯醚(HeptaBDE) - Heptabromodiphenyl ether (HeptaBDE) - 八溴二苯醚(OctaBDE) - Octabromodiphenyl ether (OctaBDE) - 九溴二苯醚(NonaBDE) - Nonabromodiphenyl ether (NonaBDE) - 十溴二苯醚(DecaBDE) - Decabromodiphenyl ether (DecaBDE)	IEC 62321-6:2015/ GC-MS	单项 Single 5mg/kg	总和 Sum 1000mg/kg
邻苯二甲酸二异丁酯(DIBP) Di-iso-butyl phthalate (DIBP)	IEC 62321-8:2017/ GC-MS	50mg/kg	1000mg/kg
邻苯二甲酸二正丁酯(DBP) Dibutyl phthalate (DBP)		50mg/kg	1000mg/kg
邻苯二甲酸丁苄酯(BBP) Butylbenzyl phthalate (BBP)		50mg/kg	1000mg/kg
邻苯二甲酸二(2-乙基己基)酯(DEHP) Di-(2-ethylhexyl) Phthalate (DEHP)		50mg/kg	1000mg/kg

Any report having not been signed by authorized approver, or having been altered without authorization, or having not been stamped by the "Dedicated Testing/Inspection Stamp" is deemed to be invalid. Copying or excerpting portion of, or altering the content of the report is not permitted without the written authorization of AGC. The test results presented in the report apply only to the tested sample. Any objections to report issued by AGC should be submitted to AGC within 15 days after the issuance of the test report. Further enquiry of validity or verification of the test report should be addressed to AGC by agc@agc-cert.com.



### 测试流程图(Test Flow Chart)

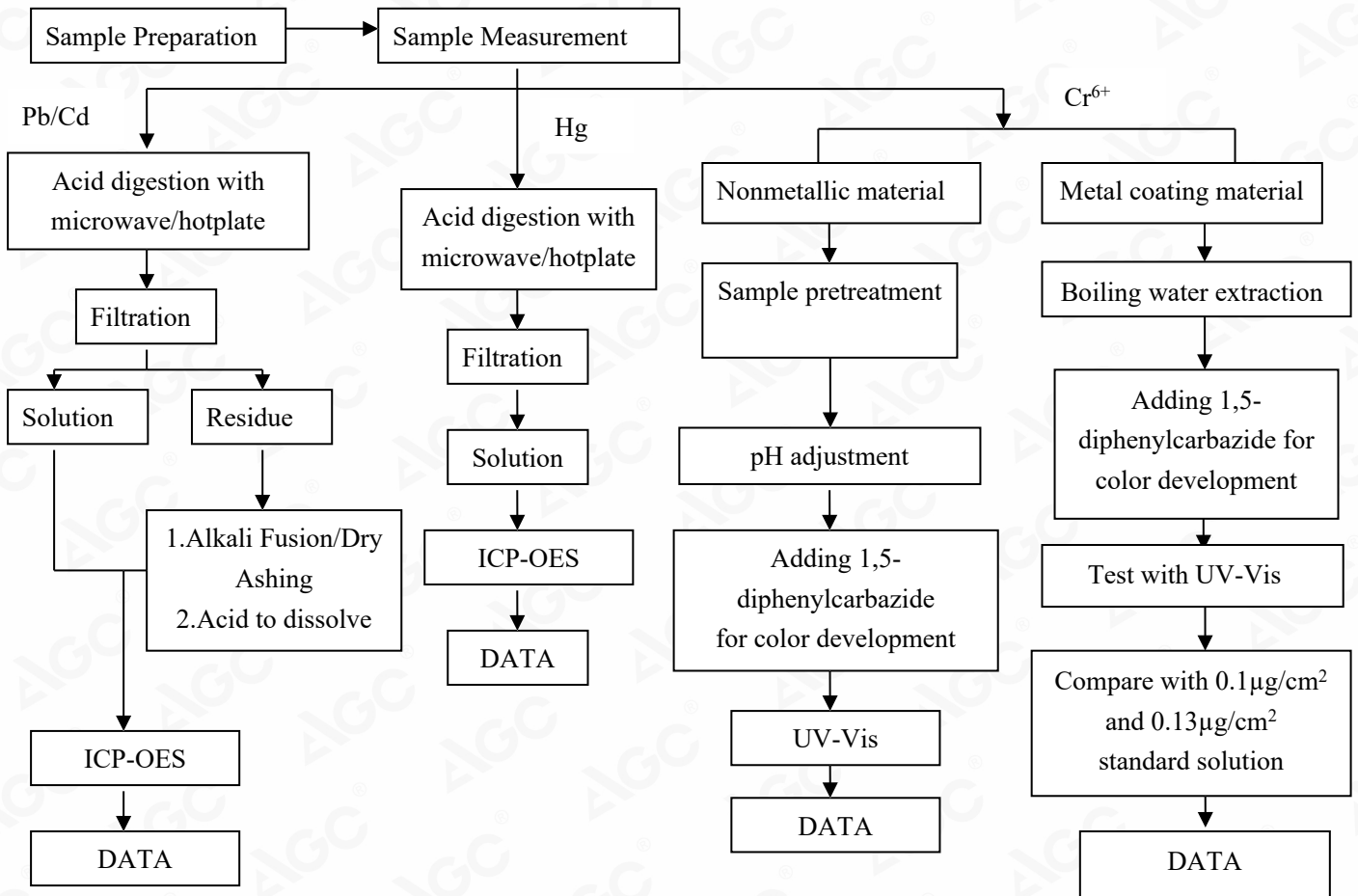
#### 1.Pb, Cd, Hg, Cr<sup>6+</sup>测试流程图



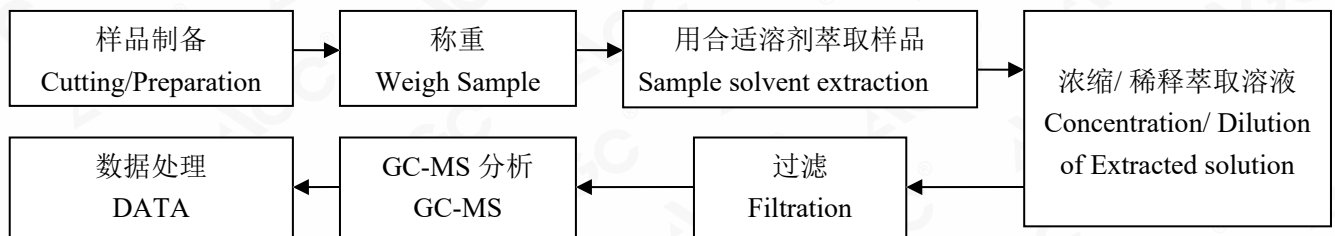
根据以上的流程图之条件，样品已经完全溶解（六价铬测试方法除外）。

Any report having not been signed by authorized approver, or having been altered without authorization, or having not been stamped by the "Dedicated Testing/Inspection Stamp" is deemed to be invalid. Copying or excerpting portion of, or altering the content of the report is not permitted without the written authorization of AGC. The test results presented in the report apply only to the tested sample. Any objections to report issued by AGC should be submitted to AGC within 15days after the issuance of the test report. Further enquiry of validity or verification of the test report should be addressed to AGC by agc@agc-cert.com.



**1.For Pb , Cd , Hg, Cr<sup>6+</sup>**


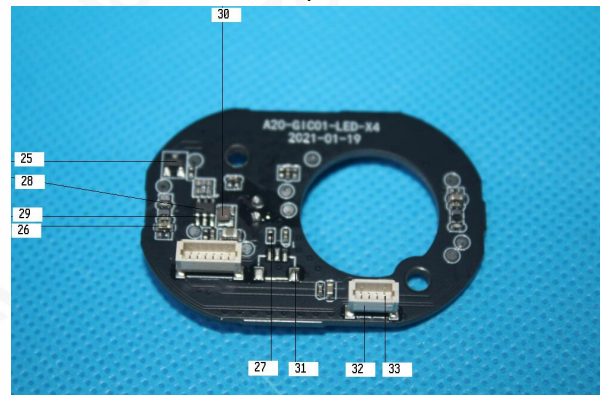
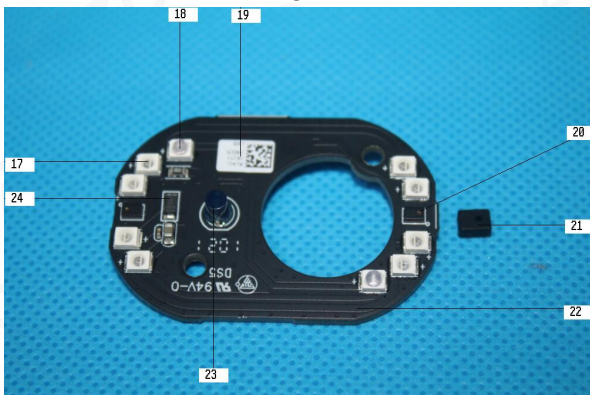
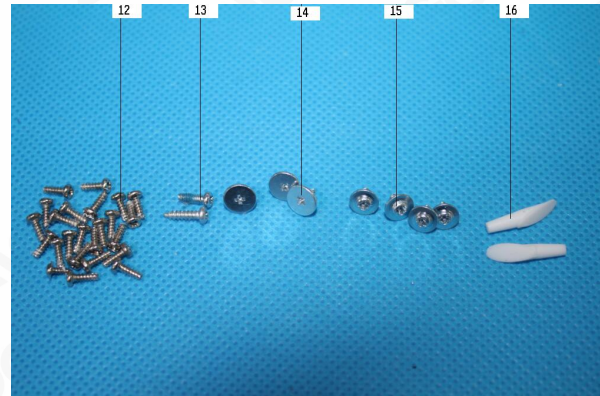
These sample were dissolved totally by pre-conditioning method according to above flow chart (Cr<sup>6+</sup> test method excluded)

**2. PBBs, PBDEs, DBP, BBP, DEHP 和DIBP的测试流程图(The Test Flow Chart of PBBs, PBDEs, DBP, BBP, DEHP and DIBP)**


Any report having not been signed by authorized approver, or having been altered without authorization, or having not been stamped by the "Dedicated Testing/Inspection Stamp" is deemed to be invalid. Copying or excerpting portion of, or altering the content of the report is not permitted without the written authorization of AGC. The test results presented in the report apply only to the tested sample. Any objections to report issued by AGC should be submitted to AGC within 15days after the issuance of the test report. Further enquiry of validity or verification of the test report should be addressed to AGC by agc@agc-cert.com.

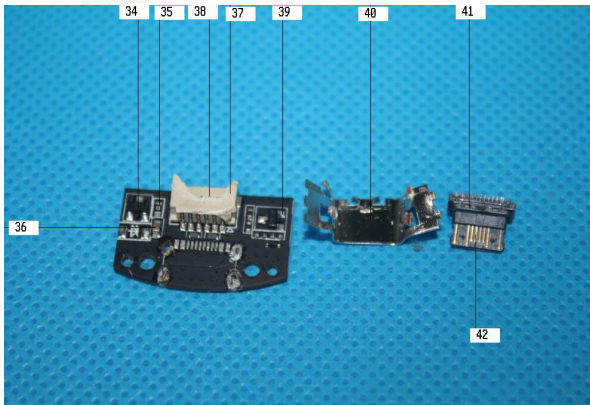


样品附图(The photo of the sample)

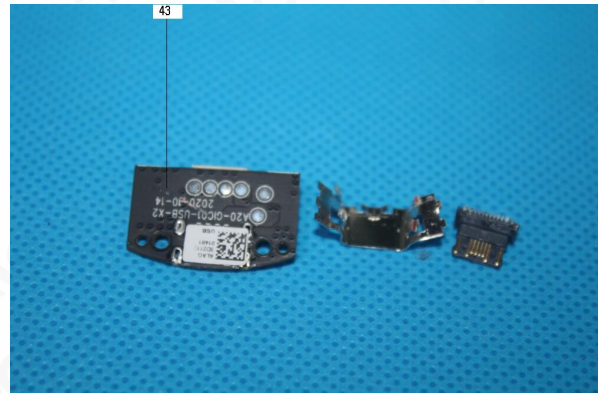


Any report having not been signed by authorized approver, or having been altered without authorization, or having not been stamped by the "Dedicated Testing/Inspection Stamp" is deemed to be invalid. Copying or excerpting portion of, or altering the content of the report is not permitted without the written authorization of AGC. The test results presented in the report apply only to the tested sample. Any objections to report issued by AGC should be submitted to AGC within 15days after the issuance of the test report. Further enquiry of validity or verification of the test report should be addressed to AGC by agc@agc-cert.com.

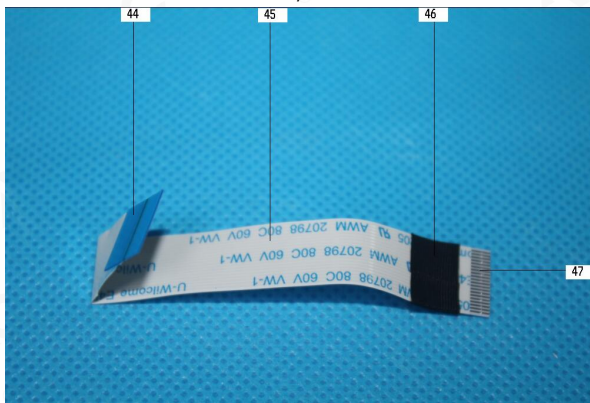




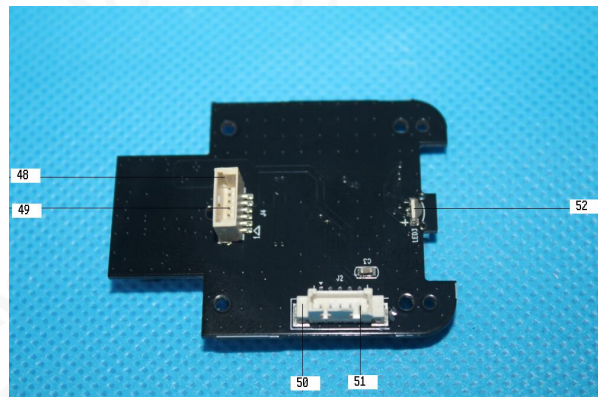
7



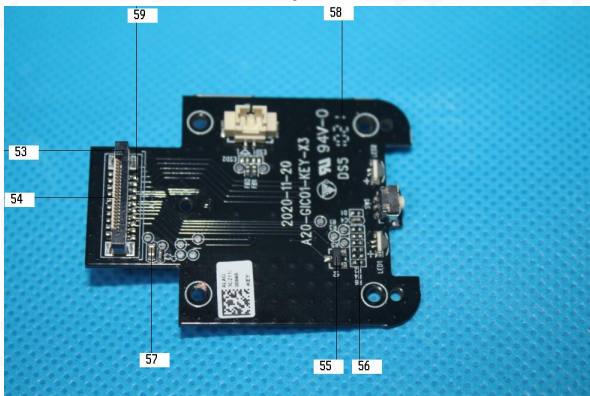
8



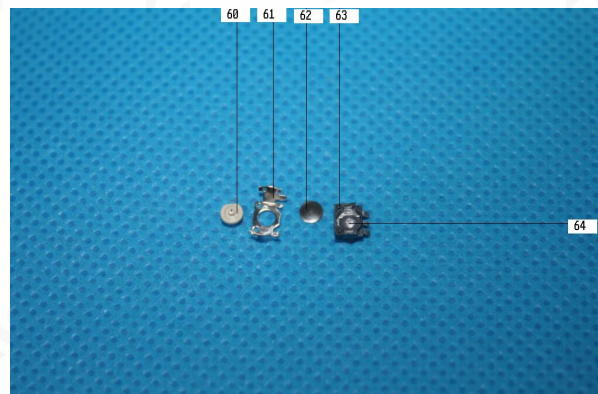
9



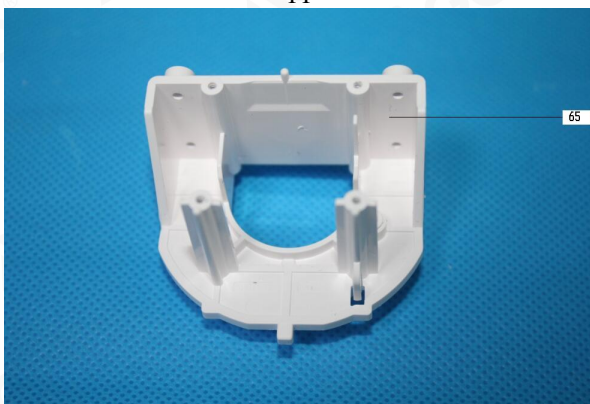
10



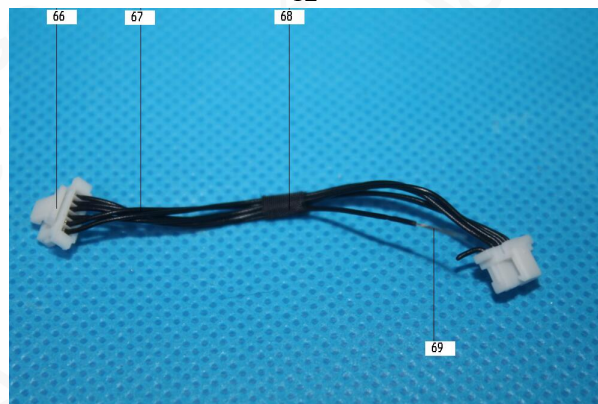
11



12



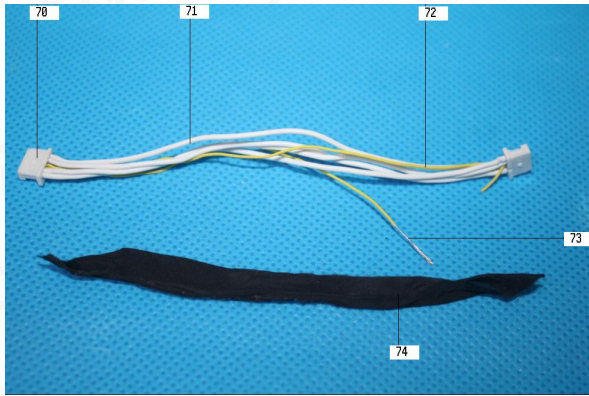
13



14

Any report having not been signed by authorized approver, or having been altered without authorization, or having not been stamped by the "Dedicated Testing/Inspection Stamp" is deemed to be invalid. Copying or excerpting portion of, or altering the content of the report is not permitted without the written authorization of AGC. The test results presented in the report apply only to the tested sample. Any objections to report issued by AGC should be submitted to AGC within 15days after the issuance of the test report. Further enquiry of validity or verification of the test report should be addressed to AGC by agc@agc-cert.com.

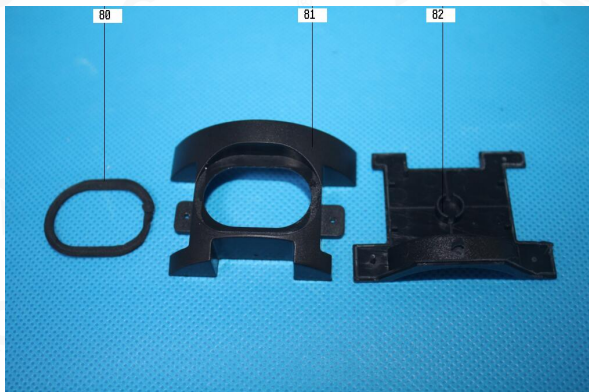




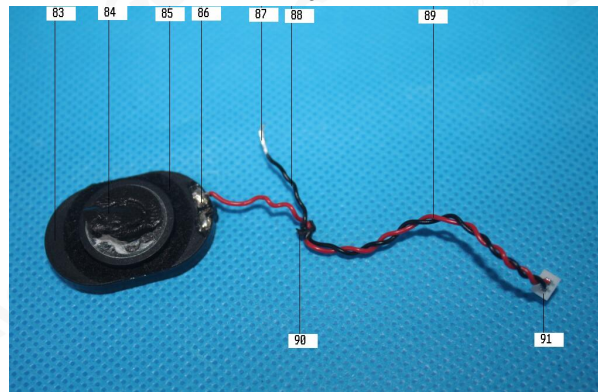
15



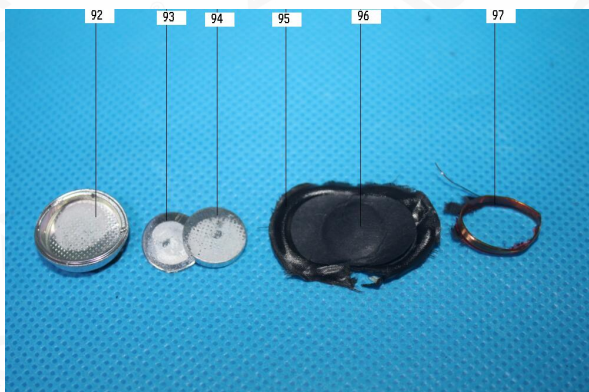
16



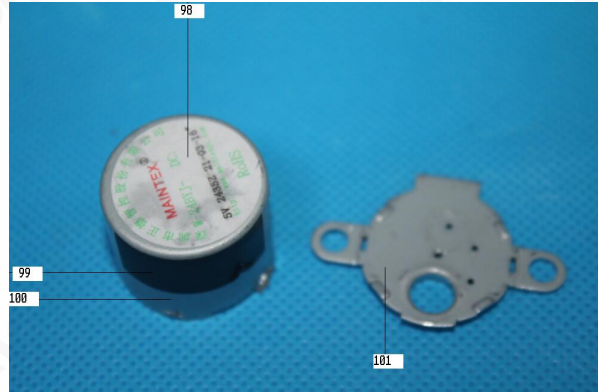
17



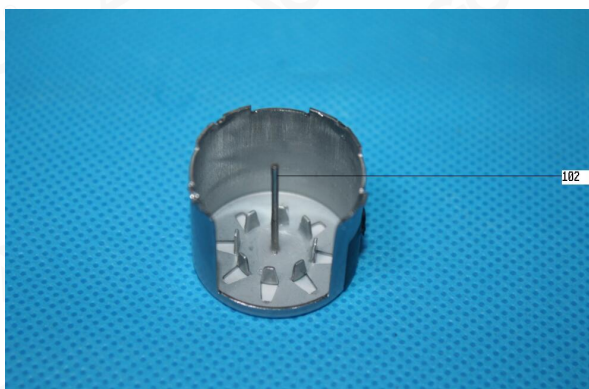
18



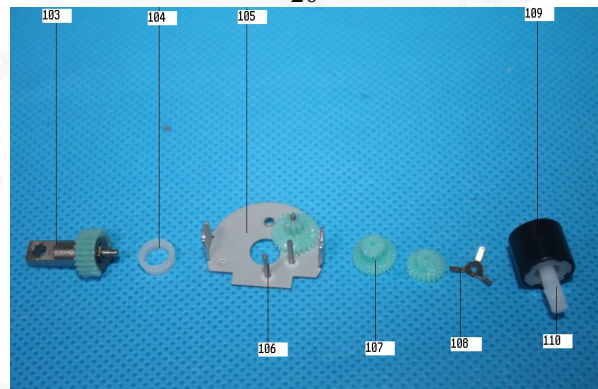
19



20



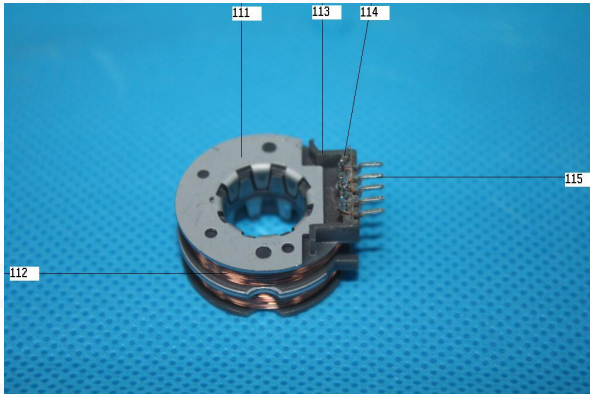
21



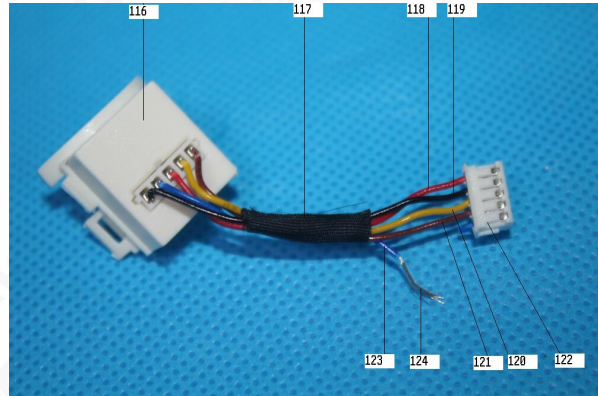
22

Any report having not been signed by authorized approver, or having been altered without authorization, or having not been stamped by the "Dedicated Testing/Inspection Stamp" is deemed to be invalid. Copying or excerpting portion of, or altering the content of the report is not permitted without the written authorization of AGC. The test results presented in the report apply only to the tested sample. Any objections to report issued by AGC should be submitted to AGC within 15 days after the issuance of the test report. Further enquiry of validity or verification of the test report should be addressed to AGC by agc@agc-cert.com.

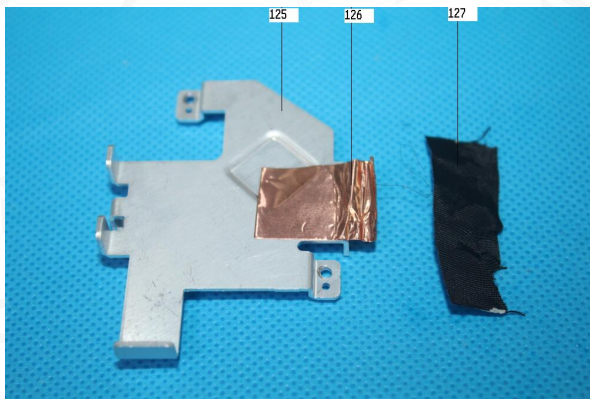




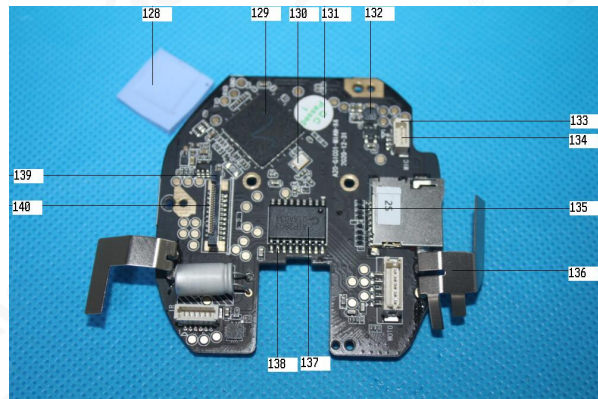
23



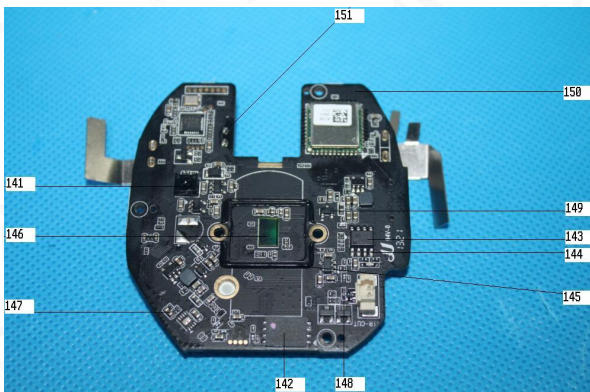
24



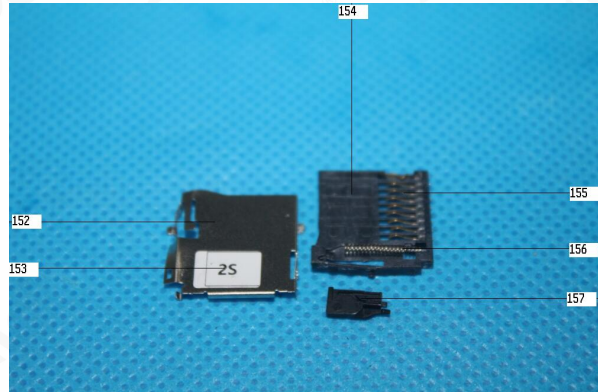
25



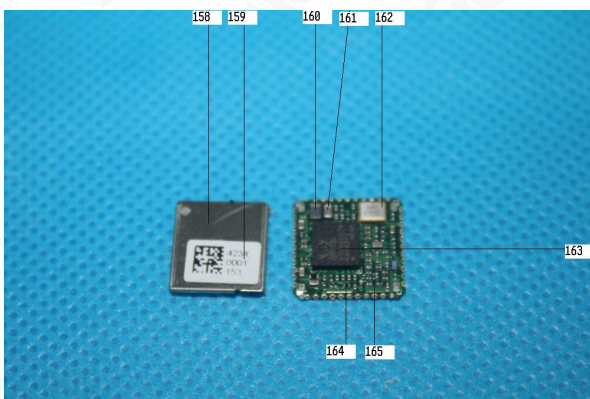
26



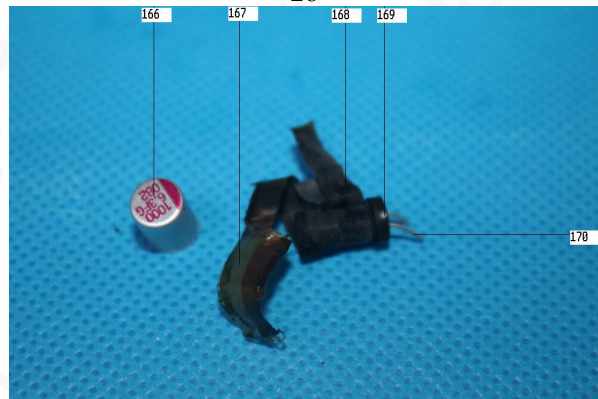
27



28



29

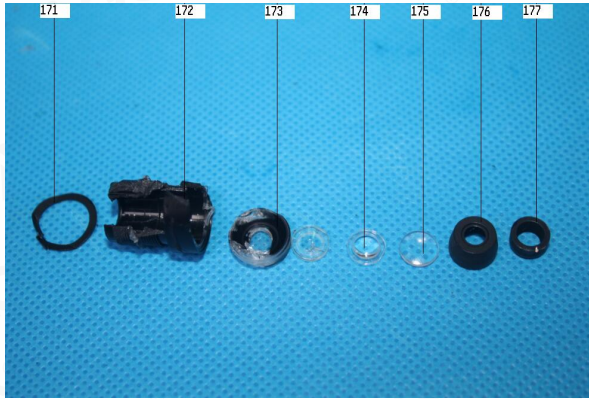


30

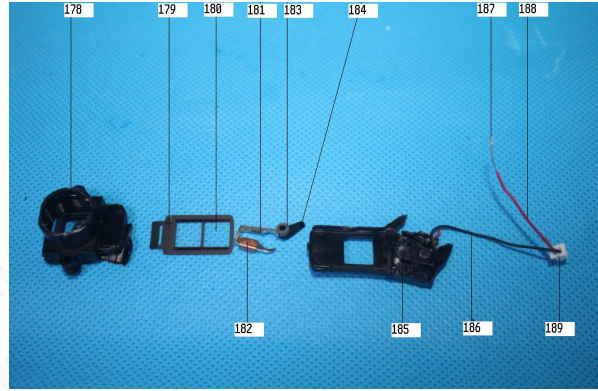
Any report having not been signed by authorized approver, or having been altered without authorization, or having not been stamped by the "Dedicated Testing/Inspection Stamp" is deemed to be invalid. Copying or excerpting portion of, or altering the content of the report is not permitted without the written authorization of AGC. The test results presented in the report apply only to the tested sample. Any objections to report issued by AGC should be submitted to AGC within 15days after the issuance of the test report. Further enquiry of validity or verification of the test report should be addressed to AGC by agc@agc-cert.com.



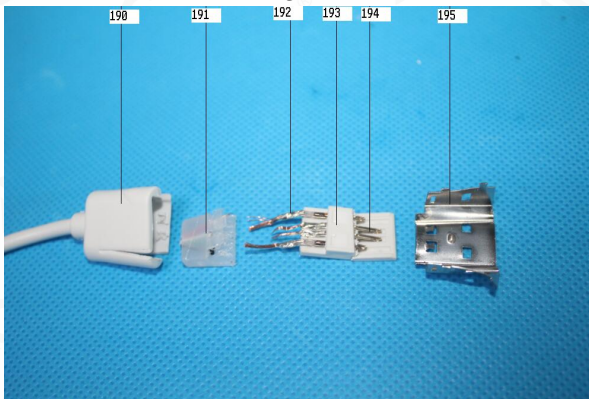




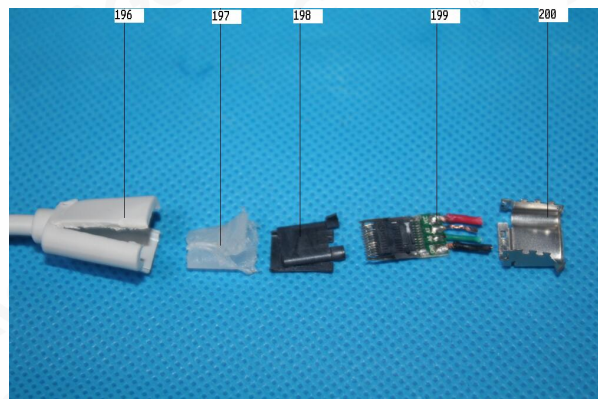
31



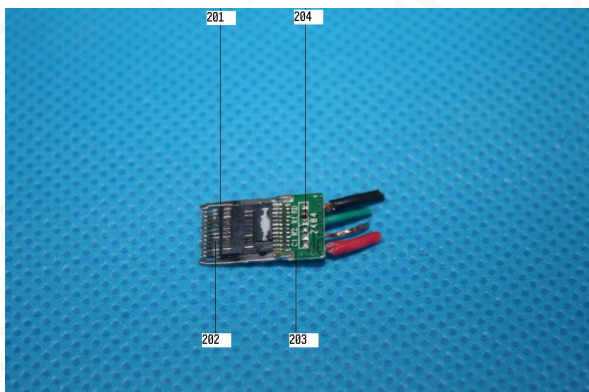
32



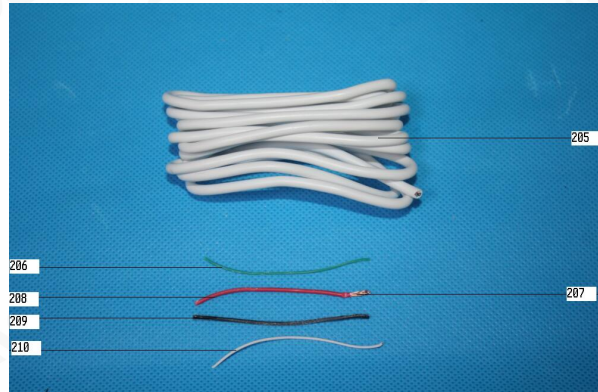
33



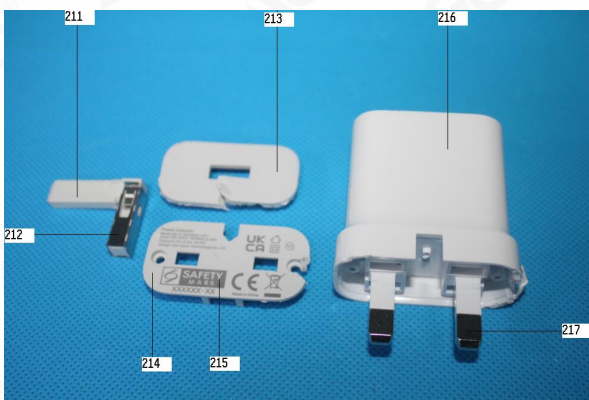
34



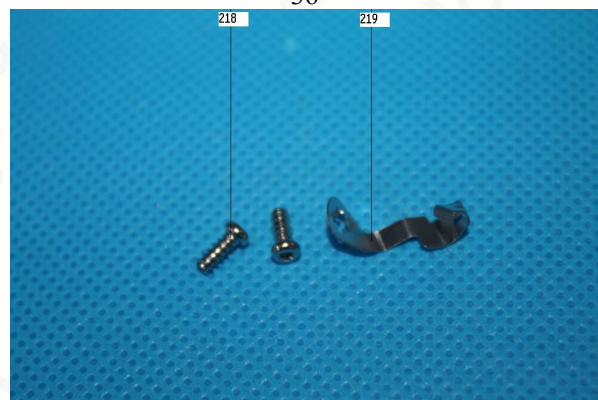
35



36



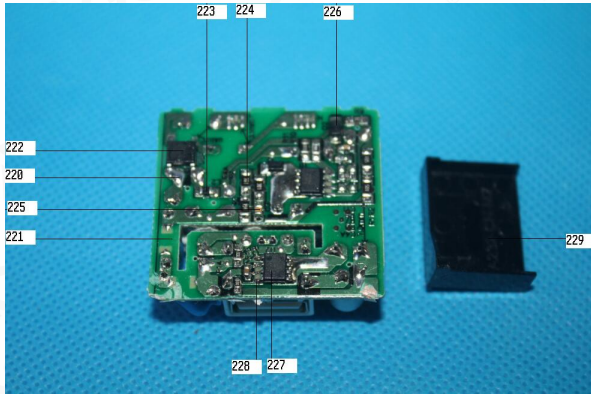
37



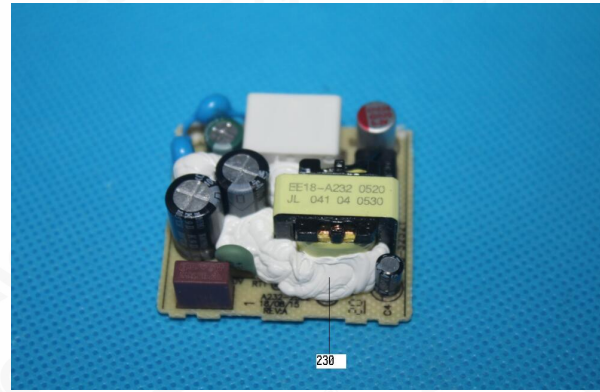
38

Any report having not been signed by authorized approver, or having been altered without authorization, or having not been stamped by the "Dedicated Testing/Inspection Stamp" is deemed to be invalid. Copying or excerpting portion of, or altering the content of the report is not permitted without the written authorization of AGC. The test results presented in the report apply only to the tested sample. Any objections to report issued by AGC should be submitted to AGC within 15days after the issuance of the test report. Further enquiry of validity or verification of the test report should be addressed to AGC by agc@agc-cert.com.

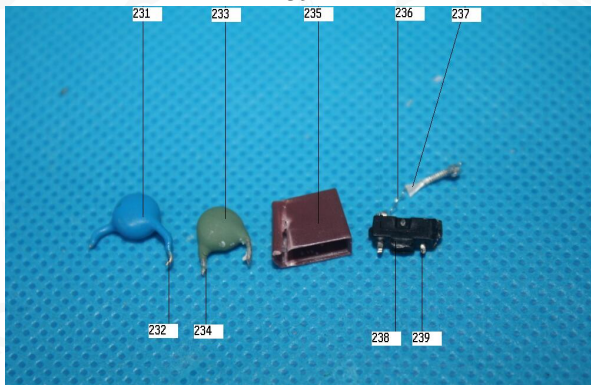




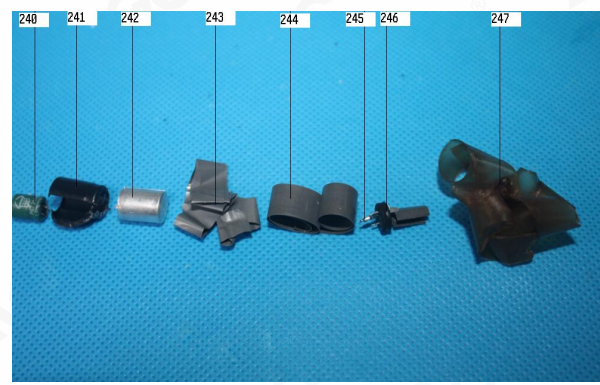
39



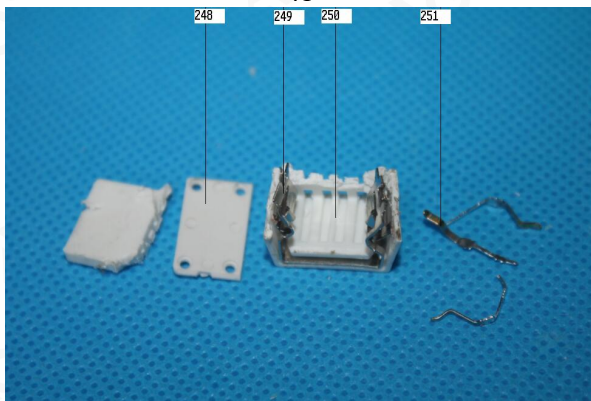
40



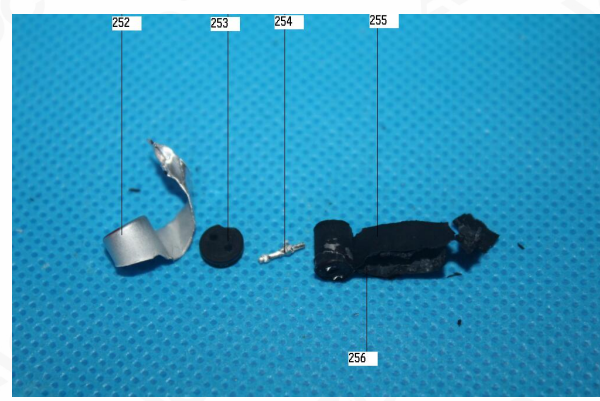
41



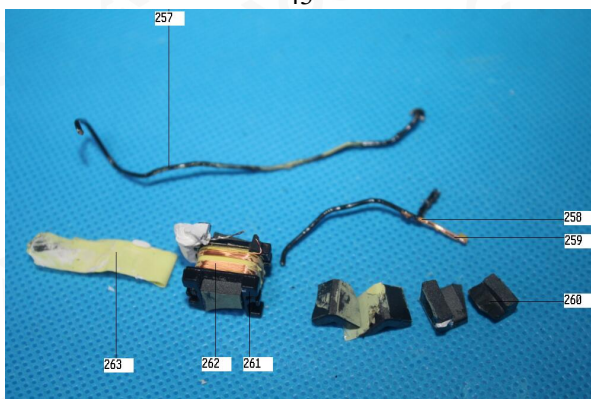
42



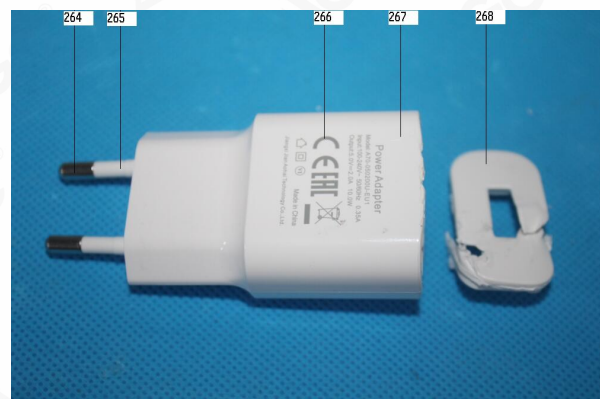
43



44



45

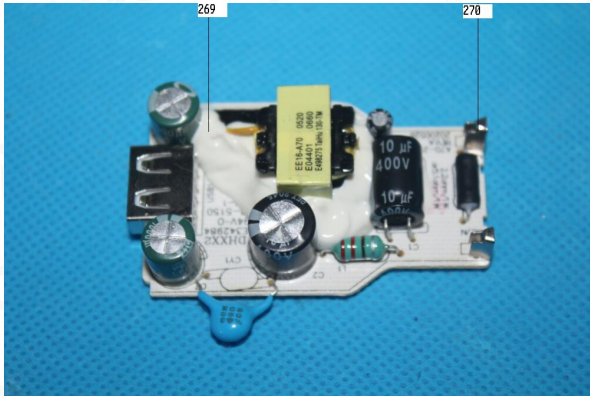


46

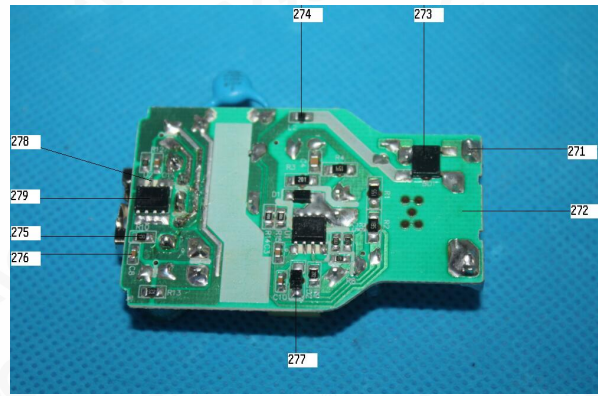
Any report having not been signed by authorized approver, or having been altered without authorization, or having not been stamped by the "Dedicated Testing/Inspection Stamp" is deemed to be invalid. Copying or excerpting portion of, or altering the content of the report is not permitted without the written authorization of AGC. The test results presented in the report apply only to the tested sample. Any objections to report issued by AGC should be submitted to AGC within 15days after the issuance of the test report. Further enquiry of validity or verification of the test report should be addressed to AGC by agc@agc-cert.com.

Attestation of Global Compliance(Shenzhen)Co., Ltd  
 Attestation of Global Compliance(Shenzhen)Std & Tech Co., Ltd  
 Tel: +86-755 2523 4088 E-mail: agc@agc-cert.com Web: http://cn.agc-cert.com/

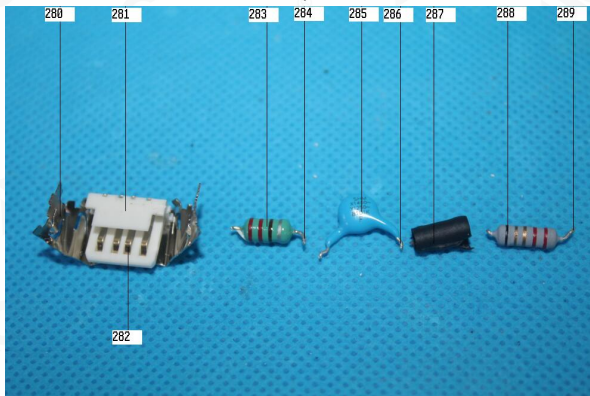




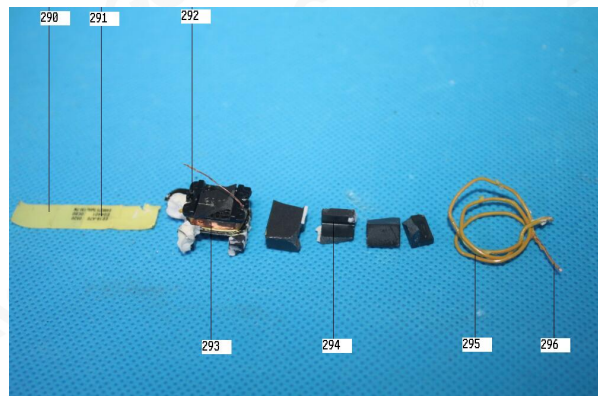
47



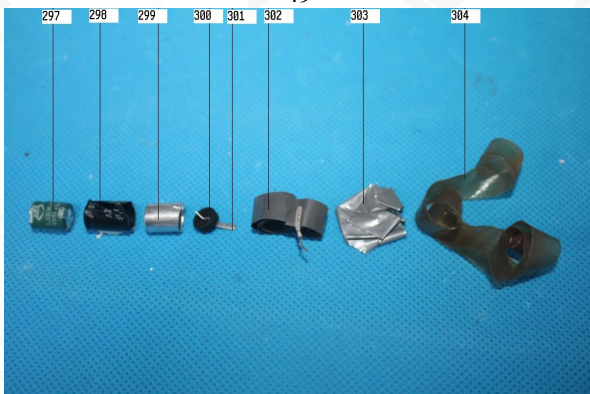
48



49



50



51



**AGC00925210601-001**

此图片仅限于随 AGC 正本报告使用  
 AGC authenticate the photo only on original report  
 \*\*\*报告结束\*\*\*  
 \*\*\* End of Report \*\*\*

Any report having not been signed by authorized approver, or having been altered without authorization, or having not been stamped by the "Dedicated Testing/Inspection Stamp" is deemed to be invalid. Copying or excerpting portion of, or altering the content of the report is not permitted without the written authorization of AGC. The test results presented in the report apply only to the tested sample. Any objections to report issued by AGC should be submitted to AGC within 15days after the issuance of the test report. Further enquiry of validity or verification of the test report should be addressed to AGC by agc@agc-cert.com.

Attestation of Global Compliance(Shenzhen)Co., Ltd  
 Attestation of Global Compliance(Shenzhen)Std & Tech Co., Ltd  
 Tel: +86-755 2523 4088 E-mail: agc@agc-cert.com Web: http://cn.agc-cert.com/





## 签发测试报告条款 Conditions of Issuance of Test Reports

1. 深圳市鑫宇环标准技术有限公司(以下简称[本公司])为提供符合下述条款的测试和报告, 而接受有关样品和货品。本公司基于下述条款提供服务, 下述条款为本公司与申请服务的个人, 企业或公司(以下简称[客户])的协议。All samples and goods are accepted by the Attestation of Global Compliance (Shenzhen) Std & Tech Co., Ltd. (the "Company") solely for testing and reporting in accordance with the following terms and conditions. The company provides its services on the basis that such terms and conditions constitute express agreement between the company and any person, firm or company requesting its services (the "Clients").
2. 由此测试申请所发出的任何报告(以下简称[报告]), 本公司会严格为客户保密。未经本公司的书面同意, 报告的整体或部分不得复制, 也不得用于广告或授权的其他用途。然而, 客户可以将本公司印制的报告或认可的副本, 向其客户、供货商或直接相关的其他人出示或提交。除非相关政府部门、法律或法规要求, 否则未经客户同意, 本公司不得将报告内容向任何第三方讨论或披露。Any report issued by Company as a result of this application for testing services (the "Report") shall be issued in confidence to the Clients and the Report will be strictly treated as such by the Company. It may not be reproduced either in its entirety or in part and it may not be used for advertising or other unauthorized purposes without the written consent of the Company. The Clients to whom the Report is issued may, however, show or send it, or a certified copy thereof prepared by the Company to its customer, supplier or other persons directly concerned. The Company will not, without the consent of the Clients, enter into any discussion or correspondence with any third party concerning the contents of the Report, unless required by the relevant governmental authorities, laws or court orders.
3. 除非相关政府部门、法律或法院要求, 否则未经公司预先书面同意, 本公司毋需也无义务到法院对有关报告作证。The Company shall not be called or be liable to be called to give evidence or testimony on the Report in a court of law without its prior written consent, unless required by the relevant governmental authorities, laws or court orders.
4. 无 CMA 标志的报告, 仅供使用方内部参考, 不具有对社会的证明作用。The non-CMA report issued by AGC is only permitted to be used by the client as internal reference use and shall not be used for public demonstration purpose.
5. 如果本公司确定报告被不当地使用, 本公司保留撤回报告的权利, 并有权要求其它适当的额外赔偿。In the event of the improper use of the report as determined by the Company, the Company reserves the right to withdraw it, and to adopt any other additional remedies which may be appropriate.
6. 本公司接受样品进行测试的前提是, 该测试报告不能作为针对本公司法律行动的依据。Samples submitted for testing are accepted on the understanding that the Report issued cannot form the basis of, or be the instrument for, any legal action against the Company.
7. 如因使用本公司任何报告内的资料, 或任何传播信息所描述与之有关的测试或研究导致的任何损失或损害, 本公司概不负责。The Company will not be liable for or accept responsibility for any loss or damage however arising from the use of information contained in any of its Reports or in any communication whatsoever about its said tests or investigations.
8. 若需要在法院审理程序或仲裁过程中使用测试报告, 客户必须在提交测试样品前将该意图告知本公司。Clients wishing to use the Report in court proceedings or arbitration shall inform the Company to that effect prior to submitting the sample for testing.

Any report having not been signed by authorized approver, or having been altered without authorization, or having not been stamped by the "Dedicated Testing/Inspection Stamp" is deemed to be invalid. Copying or excerpting portion of, or altering the content of the report is not permitted without the written authorization of AGC. The test results presented in the report apply only to the tested sample. Any objections to report issued by AGC should be submitted to AGC within 15 days after the issuance of the test report. Further enquiry of validity or verification of the test report should be addressed to AGC by [agc@agc-cert.com](mailto:agc@agc-cert.com).





9. 电子版报告更改后将不被追回，客户有义务将更改后的报告提供给使用原报告的相关方。The Company is not responsible for recalling the electronic version of the original report when any revision is made to them. The Client assumes the responsibility to providing the revised version to any interested party who uses them.

10. 该测试报告的支持数据和信息本公司保存 6 年。个别评审机构有特别要求的，检测数据和报告的保存期可依情况变动。一旦超过上述提交的保存期限，数据和信息将被处理掉。任何情况下，本公司不必提供任何被处理的过期数据或信息。即使本公司事先被告知可能会发生相关的损害，本公司在任何情况下也不必承担任何损害，包括(但不限于)补偿性赔偿、利润损失、数据遗失、或任何形式的特殊损害、附带损害、间接损害、从属损害或任何违反约定、违反承诺、侵权(包括疏忽)、产品责任或其他原因的惩罚性损害。Subject to the variable length of retention time for test data and report stored hereinto as otherwise specifically required by individual accreditation authorities, the Company will only keep the supporting test data and information of the test report for a period of six years. The data and information will be disposed of after the aforementioned retention period has elapsed. Under no circumstances shall we provide any data and information which has been disposed of after retention period. Under no circumstances shall we be liable for damage of any kind, including (but not limited to) compensatory damages, lost profits, lost data, or any form of special, incidental, indirect, consequential or punitive damages of any kind, whether based on breach of contract of warranty, tort (including negligence), product liability or otherwise, even if we are informed in advance of the possibility of such damages.

Any report having not been signed by authorized approver, or having been altered without authorization, or having not been stamped by the "Dedicated Testing/Inspection Stamp" is deemed to be invalid. Copying or excerpting portion of, or altering the content of the report is not permitted without the written authorization of AGC. The test results presented in the report apply only to the tested sample. Any objections to report issued by AGC should be submitted to AGC within 15days after the issuance of the test report. Further enquiry of validity or verification of the test report should be addressed to AGC by agc@agc-cert.com.

Attestation of Global Compliance(Shenzhen)Co., Ltd  
Attestation of Global Compliance(Shenzhen)Std & Tech Co., Ltd  
Tel: +86-755 2523 4088 E-mail: agc@agc-cert.com Web: <http://cn.agc-cert.com/>

