

测试报告(Test Report)

报告编号(Report No.): AGC00925200515-004

日期(Date): 2020/06/12

页数(Page): 1 / 16

申请单位: 深圳绿米联创科技有限公司

Applicant: Lumi United Technology Co., Ltd

单位地址: 深圳市南山区桃源街道留仙大道塘岭路 1 号金骐智谷大厦 8 楼

Address: 8th Floor, JinQi Wisdom Valley, No.1 Tangling Road, Liuxian Ave, Taoyuan Residential District, Nanshan District, Shenzhen.China

测试地址: 广东省深圳市宝安区航城街道三围社区三围茶西工业区 2 栋 1、6 层, 518012

Test site: 1,6/F.,Building 2,Sanwei Chaxi Industrial Park,Sanwei Community,Hangcheng Street,Baoan District,Shenzhen,Guangdong,China

样品信息:

样品名称(Sample Name): 单路控制模块 T1(单火线版)/Single Switch Module T1 (No Neutral)

型号(Model): SSM-U02

商标(Brand): Aqara

制造商(Manufacturer): 深圳绿米联创科技有限公司 / Lumi United Technology Co., Ltd

地址(Address): 深圳市南山区桃源街道留仙大道塘岭路 1 号金骐智谷大厦 8 楼 / 8th Floor, JinQi Wisdom Valley, No.1 Tangling Road, Liuxian Ave, Taoyuan Residential District, Nanshan District, Shenzhen.China

收样日期(Sample Received Date): 2020/05/26

测试周期(Testing Period): 2020/05/26-2020/06/03

Approved by: 
签发: 梁丹(Jessie Liang)
技术总监(Technical Director)



The results shown in this test report refer only to the sample(s) tested unless otherwise stated and the sample(s) are retained for 30 days only. The document is issued by AGC, this document cannot be reproduced except in full with our prior written permission. The more details and the authenticity of the report will be confirmed at <http://www.agc-cert.com>.

测试报告(Test Report)

报告编号(Report No.): AGC00925200515-004

日期(Date): 2020/06/12

页数(Page): 2 / 16

测试要求

Test Requested:

根据客户要求, 依据欧盟议会和欧盟理事会第2011/65/EU(RoHS)号指令及修正案(EU) 2015/863的要求, 通过XRF扫描和化学方法对送检样品中的铅、镉、汞、六价铬、多溴联苯、多溴二苯醚、DBP、BBP、DEHP、DIBP的含量进行测定。

As specified by client, to determine the Pb, Cd, Hg, Cr⁶⁺, PBBs, PBDEs, DBP, BBP, DEHP, DIBP content in the submitted sample in accordance with Directive 2011/65/EU (RoHS) and its amendment directive (EU) 2015/863 on XRF and Chemical Method.

结论

Conclusion

合格

Pass

序号 No.	样品描述 Sample Description		
1	外壳 Shell	白色塑料壳	White plastic shell
2		透明灯柱	Transparent lamp post
3		白色塑料按钮	White plastic button
4		灰色塑料底盖	Gray plastic bottom cover
5	保险丝 Fuse	黑色热缩套管	Black heat shrinkable casing
6		填充料	Filling material
7		引脚	Pin
8		金属端子	Metal terminal
9		白色陶瓷	White ceramic
10		金属丝	Metal wire
11	接线座 Terminal block	焊锡	Tin solder
12		灰色塑料座	Grey plastic seat
13		螺丝	Screw
14		金属弹片	Metal shrapnel
15	红色丝印电容 Red screen capacitor	银色金属座	Silver metal seat
16		红色涂层	Red coating
17		铝壳	Aluminum shell
18		电极箔	Electrode foil
19		黑色胶塞	Black rubber plug
20	黑色丝印电容 Black screen capacitor	引脚	Pin
21		黑色涂层	Black coating
22		铝壳	Aluminum shell
23		黑色塑料底座	Black plastic base seat
24		黑色胶塞	Black rubber plug
25		电解纸	Electrolytic paper

The results shown in this test report refer only to the sample(s) tested unless otherwise stated and the sample(s) are retained for 30 days only. The document is issued by AGC, this document cannot be reproduced except in full with our prior written permission. The more details and the authenticity of the report will be confirmed at <http://www.agc-cert.com>.

测试报告(Test Report)

报告编号(Report No.): AGC00925200515-004

日期(Date): 2020/06/12

页数(Page): 3 / 16

26		正极箔	Anode foil
27		负极箔	Cathode foil
28		引脚	Pin
29	变压器 transformer	黄色胶带	Yellow tape
30		漆包线	Enameled wire
31		黑色磁架	Black magnetic frame
32		黑色塑料骨架	Black plastic skeleton
33	金属膜电容 Metal film capacitance	红色封装	Red packaging
34		薄膜	Thin film
35		引脚	Pin
36	陶瓷电容		Ceramic capacitance
37	色环电阻 Color ring resistance	色环电阻	Color ring resistance
38		引脚	Pin
39	继电器 relay	黑色塑料壳	Black plastic shell
40		银色金属片	Silver metal sheet
41		漆包线	Enameled wire
42		黑色塑料骨架	Black plastic skeleton
43		银色磁铁	Silver magnet
44		红铜片	Red bronze sheet
45		红铜端子	Red bronze terminal
46		银色触点	Silver contact
47		黑色塑料底座	Black plastic base seat
48	IC	IC 本体	IC body
49		镀锡	Tin plating
50	贴片三极管		Chip triode
51	贴片 IC		Chip IC
52	贴片二极管		Chip diode
53	贴片电容		Chip capacitor
54	整流桥本体		Rectifier bridge body
55	引脚		Pin
56	贴片电阻		Chip resistor
57	焊锡		Tin solder
58	黑色 PCB 板		Black PCB board
59	贴片钽电容		Tantalum chip capacitor
60		贴片 IC	Chip IC
61		贴片电感	Chip inductor
62		贴片晶振	Chip crystal oscillator

The results shown in this test report refer only to the sample(s) tested unless otherwise stated and the sample(s) are retained for 30 days only. The document is issued by AGC, this document cannot be reproduced except in full with our prior written permission. The more details and the authenticity of the report will be confirmed at <http://www.agc-cert.com>.

测试报告(Test Report)

报告编号(Report No.): AGC00925200515-004

日期(Date): 2020/06/12

页数(Page): 4 / 16

63	模块电路板 Module circuit board	天线座 Antenna base	铜圈 Copper ring	Copper ring
64			插针 Contact pin	Contact pin
65			白色塑料座 White plastic seat	White plastic seat
66			贴片电容 Chip capacitor	Chip capacitor
67			贴片 LED Chip LED	Chip LED
68			黑色 PCB 板 Black PCB board	Black PCB board
69			贴片 IC Chip IC	Chip IC
70			镀锡 Tin plating	Tin plating
71		轻触开关 Tact Switch	黑色塑料按钮 Black plastic button	Black plastic button
72			银色金属片 Silver metal sheet	Silver metal sheet
73	金属弹片 Metal shrapnel		Metal shrapnel	
74	白色塑料底座 White plastic base seat		White plastic base seat	
75	天线 antenna	绿色 PCB 板 Green PCB board	Green PCB board	
76		焊锡 Tin solder	Tin solder	
77		黑色热缩套管 Black heat shrinkable casing	Black heat shrinkable casing	
78		双面胶 Double faced adhesive tape	Double faced adhesive tape	
79		黑色线套管 Black wire sleeve	Black wire sleeve	
80		黑色线皮 Black wire jacket	Black wire jacket	
81		金属编织线 Metal braided wire	Metal braided wire	
82		透明线皮 Transparent wire jacket	Transparent wire jacket	
83		线芯 Wire core	Wire core	
84		铜端子 Copper terminal	Copper terminal	
85		黑色内胶 Black inner glue	Black inner glue	
附件 Accessories				
86	扫码标签 Scan code label		Scan code label	Scan code label

The results shown in this test report refer only to the sample(s) tested unless otherwise stated and the sample(s) are retained for 30 days only. The document is issued by AGC, this document cannot be reproduced except in full with our prior written permission. The more details and the authenticity of the report will be confirmed at <http://www.agc-cert.com>.

测试报告(Test Report)

报告编号(Report No.): AGC00925200515-004

日期(Date): 2020/06/12

页数(Page): 5 / 16

(测试方法/仪器/方法检出限及限值: 见附件)

(Test Method/ Instrument/ MDL and Limit: See Appendix)

序号 No.	测试结果 Test result (mg/kg)										结论 Conclusion
	Pb	Cd	Hg	Cr ⁶⁺	PBBs	PBDEs	DIBP	DBP	BBP	DEHP	
1	N.D.	N.D.	N.D.	224	N.D.	N.D.	N.D.*	N.D.*	N.D.*	N.D.*	符合 Conformity
2	N.D.	N.D.	N.D.	N.D.	N.D.	N.D.	N.D.*	N.D.*	N.D.*	N.D.*	符合 Conformity
3	N.D.	N.D.	N.D.	271	N.D.	N.D.	N.D.*	N.D.*	N.D.*	N.D.*	符合 Conformity
4	N.D.	N.D.	N.D.	N.D.	N.D.	N.D.	N.D.*	N.D.*	N.D.*	N.D.*	符合 Conformity
5	N.D.	N.D.	N.D.	N.D.	N.D.	N.D.	N.D.*	N.D.*	N.D.*	N.D.*	符合 Conformity
6	N.D.	N.D.	N.D.	N.D.	N.D.	N.D.	N.D.*	N.D.*	N.D.*	N.D.*	符合 Conformity
7	N.D.	N.D.	N.D.	N.D.	N/A	N/A	N/A	N/A	N/A	N/A	符合 Conformity
8	N.D.	N.D.	N.D.	N.D.	N/A	N/A	N/A	N/A	N/A	N/A	符合 Conformity
9	N.D.	N.D.	N.D.	N.D.	N.D.	N.D.	N.D.*	N.D.*	N.D.*	N.D.*	符合 Conformity
10	230	N.D.	N.D.	N.D.	N/A	N/A	N/A	N/A	N/A	N/A	符合 Conformity
11	N.D.	N.D.	N.D.	611	N/A	N/A	N/A	N/A	N/A	N/A	符合 Conformity
12	N.D.	N.D.	N.D.	N.D.	N.D.	N.D.	N.D.*	N.D.*	N.D.*	N.D.*	符合 Conformity
13	N.D.	N.D.	N.D.	312	N/A	N/A	N/A	N/A	N/A	N/A	符合 Conformity
14	N.D.	N.D.	N.D.	N.D.	N/A	N/A	N/A	N/A	N/A	N/A	符合 Conformity
15	36546*	N.D.	N.D.	N.D.	N/A	N/A	N/A	N/A	N/A	N/A	符合 Conformity
16	N.D.	N.D.	N.D.	N.D.	N.D.	N.D.	N.D.*	N.D.*	N.D.*	N.D.*	符合 Conformity
17	N.D.	N.D.	N.D.	N.D.	N/A	N/A	N/A	N/A	N/A	N/A	符合 Conformity
18	N.D.	N.D.	N.D.	N.D.	N/A	N/A	N/A	N/A	N/A	N/A	符合 Conformity
19	N.D.	N.D.	N.D.	N.D.	N.D.	N.D.	N.D.*	N.D.*	N.D.*	N.D.*	符合 Conformity
20	N.D.	N.D.	N.D.	N.D.	N/A	N/A	N/A	N/A	N/A	N/A	符合 Conformity
21	N.D.	N.D.	N.D.	N.D.	N.D.	N.D.	N.D.*	N.D.*	N.D.*	N.D.*	符合 Conformity
22	N.D.	N.D.	N.D.	N.D.	N/A	N/A	N/A	N/A	N/A	N/A	符合 Conformity
23	N.D.	N.D.	N.D.	N.D.	N.D.	N.D.	N.D.*	N.D.*	N.D.*	N.D.*	符合 Conformity
24	N.D.	N.D.	N.D.	N.D.	N.D.	N.D.	N.D.*	N.D.*	N.D.*	N.D.*	符合 Conformity
25	N.D.	N.D.	N.D.	N.D.	N.D.	N.D.	N.D.*	N.D.*	N.D.*	N.D.*	符合 Conformity
26	N.D.	N.D.	N.D.	N.D.	N/A	N/A	N/A	N/A	N/A	N/A	符合 Conformity
27	N.D.	N.D.	N.D.	N.D.	N/A	N/A	N/A	N/A	N/A	N/A	符合 Conformity
28	N.D.	N.D.	N.D.	N.D.	N/A	N/A	N/A	N/A	N/A	N/A	符合 Conformity
29	N.D.	N.D.	N.D.	245	N.D.	N.D.	N.D.*	N.D.*	N.D.*	N.D.*	符合 Conformity
30	N.D.	N.D.	N.D.	N.D.	N/A	N/A	N/A	N/A	N/A	N/A	符合 Conformity
31	N.D.	N.D.	N.D.	N.D.	N.D.	N.D.	N.D.*	N.D.*	N.D.*	N.D.*	符合 Conformity
32	N.D.	N.D.	N.D.	N.D.	N.D.	N.D.	N.D.*	N.D.*	N.D.*	N.D.*	符合 Conformity

The results shown in this test report refer only to the sample(s) tested unless otherwise stated and the sample(s) are retained for 30 days only. The document is issued by AGC, this document cannot be reproduced except in full with our prior written permission. The more details and the authenticity of the report will be confirmed at <http://www.agc-cert.com>.



测试报告(Test Report)

报告编号(Report No.): AGC00925200515-004

日期(Date): 2020/06/12

页数(Page): 6 / 16

序号 No.	测试结果 Test result (mg/kg)										结论 Conclusion
	Pb	Cd	Hg	Cr ⁶⁺	PBBs	PBDEs	DIBP	DBP	BBP	DEHP	
33	N.D.	N.D.	N.D.	N.D.	N.D.	N.D.	N.D.*	N.D.*	N.D.*	N.D.*	符合 Conformity
34	N.D.	N.D.	N.D.	N.D.	N.D.	N.D.	N.D.*	N.D.*	N.D.*	N.D.*	符合 Conformity
35	N.D.	N.D.	N.D.	N.D.	N/A	N/A	N/A	N/A	N/A	N/A	符合 Conformity
36	N.D.	N.D.	N.D.	N.D.	N.D.	N.D.	N.D.*	N.D.*	N.D.*	N.D.*	符合 Conformity
37	N.D.	N.D.	N.D.	N.D.	N.D.	N.D.	N.D.*	N.D.*	N.D.*	N.D.*	符合 Conformity
38	N.D.	N.D.	N.D.	N.D.	N/A	N/A	N/A	N/A	N/A	N/A	符合 Conformity
39	N.D.	N.D.	N.D.	N.D.	N.D.	N.D.	N.D.*	N.D.*	N.D.*	N.D.*	符合 Conformity
40	N.D.	N.D.	N.D.	N.D.	N/A	N/A	N/A	N/A	N/A	N/A	符合 Conformity
41	N.D.	N.D.	N.D.	N.D.	N/A	N/A	N/A	N/A	N/A	N/A	符合 Conformity
42	N.D.	N.D.	N.D.	N.D.	N.D.	N.D.	N.D.*	N.D.*	N.D.*	N.D.*	符合 Conformity
43	N.D.	N.D.	N.D.	N.D.	N/A	N/A	N/A	N/A	N/A	N/A	符合 Conformity
44	N.D.	N.D.	N.D.	N.D.	N/A	N/A	N/A	N/A	N/A	N/A	符合 Conformity
45	N.D.	N.D.	N.D.	N.D.	N/A	N/A	N/A	N/A	N/A	N/A	符合 Conformity
46	N.D.	N.D.	N.D.	363	N/A	N/A	N/A	N/A	N/A	N/A	符合 Conformity
47	N.D.	N.D.	N.D.	N.D.	N.D.	N.D.	N.D.*	N.D.*	N.D.*	N.D.*	符合 Conformity
48	N.D.	N.D.	N.D.	N.D.	N.D.	N.D.	N.D.*	N.D.*	N.D.*	N.D.*	符合 Conformity
49	N.D.	N.D.	N.D.	N.D.	N/A	N/A	N/A	N/A	N/A	N/A	符合 Conformity
50	N.D.	N.D.	N.D.	N.D.	N.D.	N.D.	N.D.*	N.D.*	N.D.*	N.D.*	符合 Conformity
51	N.D.	N.D.	N.D.	N.D.	N.D.	N.D.	N.D.*	N.D.*	N.D.*	N.D.*	符合 Conformity
52	N.D.	N.D.	N.D.	N.D.	N.D.	N.D.	N.D.*	N.D.*	N.D.*	N.D.*	符合 Conformity
53	N.D.	N.D.	N.D.	N.D.	N.D.	N.D.	N.D.*	N.D.*	N.D.*	N.D.*	符合 Conformity
54	N.D.	N.D.	N.D.	N.D.	N.D.	N.D.	N.D.*	N.D.*	N.D.*	N.D.*	符合 Conformity
55	N.D.	N.D.	N.D.	N.D.	N/A	N/A	N/A	N/A	N/A	N/A	符合 Conformity
56	N.D.	N.D.	N.D.	N.D.	N.D.	N.D.	N.D.*	N.D.*	N.D.*	N.D.*	符合 Conformity
57	N.D.	N.D.	N.D.	582	N/A	N/A	N/A	N/A	N/A	N/A	符合 Conformity
58	N.D.	N.D.	N.D.	N.D.	N.D.	N.D.	N.D.*	N.D.*	N.D.*	N.D.*	符合 Conformity
59	N.D.	N.D.	N.D.	N.D.	N.D.	N.D.	N.D.*	N.D.*	N.D.*	N.D.*	符合 Conformity
60	N.D.	N.D.	N.D.	N.D.	N.D.	N.D.	N.D.*	N.D.*	N.D.*	N.D.*	符合 Conformity
61	N.D.	N.D.	N.D.	N.D.	N.D.	N.D.	N.D.*	N.D.*	N.D.*	N.D.*	符合 Conformity
62	N.D.	N.D.	N.D.	N.D.	N.D.	N.D.	N.D.*	N.D.*	N.D.*	N.D.*	符合 Conformity
63	N.D.	N.D.	N.D.	492	N/A	N/A	N/A	N/A	N/A	N/A	符合 Conformity
64	N.D.	N.D.	N.D.	N.D.	N/A	N/A	N/A	N/A	N/A	N/A	符合 Conformity
65	N.D.	N.D.	N.D.	N.D.	N.D.	N.D.	N.D.*	N.D.*	N.D.*	N.D.*	符合 Conformity
66	N.D.	N.D.	N.D.	N.D.	N.D.	N.D.	N.D.*	N.D.*	N.D.*	N.D.*	符合 Conformity

The results shown in this test report refer only to the sample(s) tested unless otherwise stated and the sample(s) are retained for 30 days only. The document is issued by AGC, this document cannot be reproduced except in full with our prior written permission. The more details and the authenticity of the report will be confirmed at <http://www.agc-cert.com>.



测试报告(Test Report)

报告编号(Report No.): AGC00925200515-004

日期(Date): 2020/06/12

页数(Page): 7 / 16

序号 No.	测试结果 Test result (mg/kg)										结论 Conclusion
	Pb	Cd	Hg	Cr ⁶⁺	PBBs	PBDEs	DIBP	DBP	BBP	DEHP	
67	N.D.	N.D.	N.D.	N.D.	N.D.	N.D.	N.D.*	N.D.*	N.D.*	N.D.*	符合 Conformity
68	N.D.	N.D.	N.D.	N.D.	N.D.	N.D.	N.D.*	N.D.*	N.D.*	N.D.*	符合 Conformity
69	N.D.	N.D.	N.D.	N.D.	N.D.	N.D.	N.D.*	N.D.*	N.D.*	N.D.*	符合 Conformity
70	N.D.	N.D.	N.D.	N.D.	N/A	N/A	N/A	N/A	N/A	N/A	符合 Conformity
71	N.D.	N.D.	N.D.	N.D.	N.D.	N.D.	N.D.*	N.D.*	N.D.*	N.D.*	符合 Conformity
72	N.D.	N.D.	N.D.	574	N/A	N/A	N/A	N/A	N/A	N/A	符合 Conformity
73	N.D.	N.D.	N.D.	N.D.*	N/A	N/A	N/A	N/A	N/A	N/A	符合 Conformity
74	N.D.	N.D.	N.D.	N.D.	N.D.	N.D.	N.D.*	N.D.*	N.D.*	N.D.*	符合 Conformity
75	N.D.	N.D.	N.D.	N.D.	N.D.*	N.D.*	N.D.*	N.D.*	N.D.*	N.D.*	符合 Conformity
76	N.D.	N.D.	N.D.	N.D.	N/A	N/A	N/A	N/A	N/A	N/A	符合 Conformity
77	N.D.	N.D.	N.D.	N.D.	N.D.	N.D.	N.D.*	N.D.*	N.D.*	N.D.*	符合 Conformity
78	N.D.	N.D.	N.D.	N.D.	N.D.	N.D.	N.D.*	N.D.*	N.D.*	N.D.*	符合 Conformity
79	N.D.	N.D.	N.D.	N.D.	N.D.	N.D.	N.D.*	N.D.*	N.D.*	N.D.*	符合 Conformity
80	N.D.	N.D.	N.D.	N.D.	N.D.	N.D.	N.D.*	N.D.*	N.D.*	N.D.*	符合 Conformity
81	N.D.	N.D.	N.D.	N.D.	N/A	N/A	N/A	N/A	N/A	N/A	符合 Conformity
82	N.D.	N.D.	N.D.	N.D.	N.D.	N.D.	N.D.*	N.D.*	N.D.*	N.D.*	符合 Conformity
83	N.D.	N.D.	N.D.	N.D.	N/A	N/A	N/A	N/A	N/A	N/A	符合 Conformity
84	N.D.	N.D.	N.D.	N.D.	N/A	N/A	N/A	N/A	N/A	N/A	符合 Conformity
85	N.D.	N.D.	N.D.	N.D.	N.D.	N.D.	N.D.*	N.D.*	N.D.*	N.D.*	符合 Conformity
86	N.D.	N.D.	N.D.	N.D.	N.D.	N.D.	N.D.*	N.D.*	N.D.*	N.D.*	符合 Conformity

注释 Note:

mg/kg =毫克每千克 (milligram per kilogram)

µg/cm² =微克每平方厘米 (microgram per square centimeter)

N.D.= 未检出 (小于方法检出限) (Not Detected (less than method detection limit))

N/A=不适用 (Not applicable)

MDL =方法检出限 Method Detection Limit

豁免项目 Exemption

序号 Seq. No	豁免条款 Exemption clause	内容 Content
15	6(c)	铜合金中的铅含量不应该超过 4% Copper alloy containing up to 4% lead by weight

The results shown in this test report refer only to the sample(s) tested unless otherwise stated and the sample(s) are retained for 30 days only. The document is issued by AGC, this document cannot be reproduced except in full with our prior written permission. The more details and the authenticity of the report will be confirmed at <http://www.agc-cert.com>.



测试报告(Test Report)

报告编号(Report No.): AGC00925200515-004

日期(Date): 2020/06/12

页数(Page): 8 / 16

备注 Remark:

- *表示报告结果采用湿化学法。其他的则由X射线荧光。对于X射线荧光筛选，Cr VI的结果报告为总铬，而多溴联苯和多溴二苯醚报告为总溴。此外，XRF扫描结果可能基于各种因素与实际含量有所不同，包括但不限于样品尺寸、厚度、面积、不均匀性成分，表面平整度。

*denotes as reported result(s) was (were) performed by wet chemistry method. Others were screened by XRF. For XRF screening, the result(s) of Cr VI was (were) reported as total chromium and the result(s) of PBBs and PBDEs was (were) reported as total bromine. Also, the XRF result(s) may be different to the actual content based on various factors including, but not limit to, sample size, thickness, area, nonuniformity composition, surface flatness.

- XRF 扫描报告仅供参考，申请者必须自己确认本 XRF 扫描报告所提供的信息能满足/他/她的用途。基于不同的因素，本 XRF 扫描报告显示结果有所不同，包括但不限于样品的尺寸、厚度、面积、表面光滑度、设备参数和基体效应(例如塑胶、橡胶、金属、玻璃、陶瓷等等)。为获得数据资料，要求有相关化学分析设备作进一步湿化学预处理。

This XRF Scanning report is for reference purposes only. The applicant shall make its/his/her own judgment as to whether the information provided in this XRF screening report is sufficient for its/his/her purposes.

The result shown in this XRF scanning report will differ based on various factors, including but not limited to, the sample size, thickness, area, surface flatness, equipment parameters and matrix effect (e.g. plastic, rubber, metal, glass, ceramic etc.). Further wet chemical pre-treatment with relevant chemical equipment analysis are required to obtain quantitative data.

- Boiling-water-extraction 沸水提取: (X represents the results of the tested sample / X 为待测样品结果)

Number 序号	Colorimetric result (Cr(VI) concentration) 比色结果(铬(VI)浓度)	Judgement 判定
1	$X < 0.1 \mu\text{g}/\text{cm}^2$	Negative 阴性
2	$0.1 \mu\text{g}/\text{cm}^2 \leq X \leq 0.13 \mu\text{g}/\text{cm}^2$	Uncertainty 不确定
3	$X > 0.13 \mu\text{g}/\text{cm}^2$	Positive 阳性

- # =

Negative indicates the absence of Cr(VI) on the tested areas concentration is below the limit of quantification.

The coating is considered a non-Cr(VI) based coating. 阴性表明测试区域内六价铬含量低于定量极限，认定镀层不存在六价铬；

Uncertainty indicates the absence of Cr(VI) on the tested areas unavoidable coating variations may influence the determination. 不确定表明测试区域镀层六价铬的不可避免的变化影响结果判定，导致无法判定结果；

Positive indicates the presence of Cr(VI) on the tested areas concentration is above the limit of quantification and the statistical margin of error. The sample coating is considered to contain Cr(VI). 阳性表明测试区域内六价铬含量高于于定量极限，认定镀层含有六价铬；

Storage conditions and production date of the tested sample are unavailable and thus result of Cr(VI) represent status of the sample at the time of testing. 由于未获知样品的存储条件和生产日期、样品的六价铬测试结果仅代表测试时样品的状态。

The results shown in this test report refer only to the sample(s) tested unless otherwise stated and the sample(s) are retained for 30 days only. The document is issued by AGC, this document cannot be reproduced except in full with our prior written permission. The more details and the authenticity of the report will be confirmed at <http://www.agc-cert.com>.



测试报告(Test Report)

报告编号(Report No.): AGC00925200515-004

日期(Date): 2020/06/12

页数(Page): 9 / 16

附件 Appendix:

测试项目 Test Item	测试方法/仪器 Test Method/ Instrument	方法检测限 MDL	限值 Limit
X 射线荧光光谱法 X-ray Fluorescence Spectrometry (XRF)			
铅 Lead (Pb)	IEC 62321-3-1:2013 / XRF	200mg/kg	≤1000mg/kg
镉 Cadmium (Cd)		50mg/kg	≤100mg/kg
汞 Mercury (Hg)		200mg/kg	≤1000mg/kg
总铬 Total Chromium		200mg/kg	/
总溴 Total Bromine		200mg/kg	/
湿化学法 Wet Chemistry Method			
铅 Lead (Pb)	IEC 62321-5:2013/ ICP-OES	10mg/kg	≤1000mg/kg
镉 Cadmium (Cd)	IEC 62321-5:2013/ ICP-OES	10mg/kg	≤100mg/kg
汞 Mercury (Hg)	IEC 62321-4: 2013+A1:2017/ ICP-OES	10mg/kg	≤1000mg/kg
非金属: 六价铬 (Cr ⁶⁺) Non-metal Hexavalent Chromium (Cr ⁶⁺)	IEC 62321-7-2:2017/ UV-Vis	8mg/kg	≤1000mg/kg
金属: 六价铬 (Cr ⁶⁺) Metal Hexavalent Chromium (Cr ⁶⁺)	IEC 62321-7-1:2015/ UV-Vis	0.1µg/cm ²	/
多溴联苯(PBBs) Polybrominated Biphenyls (PBBs) - 一溴联苯(MonoBB) -Monobromobiphenyl (MonoBB) - 二溴联苯(DiBB) -Dibromobiphenyl (DiBB) - 三溴联苯(TriBB) -Tribromobiphenyl (TriBB) - 四溴联苯(TetraBB) -Tetrabromobiphenyl (TetraBB) - 五溴联苯(PentaBB) -Pentabromobiphenyl (PentaBB) - 六溴联苯(HexaBB) -Hexabromobiphenyl (HexaBB) - 七溴联苯(HeptaBB) -Heptabromobiphenyl (HeptaBB) - 八溴联苯(OctaBB) -Octabromobiphenyl (OctaBB) - 九溴联苯(NonaBB) -Nonabromodiphenyl (NonaBB) - 十溴联苯(DecaBB) -Decabromodiphenyl (DecaBB)	IEC 62321-6:2015/ GC-MS	单项 Single 5mg/kg	总和 Sum ≤1000mg/kg

The results shown in this test report refer only to the sample(s) tested unless otherwise stated and the sample(s) are retained for 30 days only. The document is issued by AGC, this document cannot be reproduced except in full with our prior written permission. The more details and the authenticity of the report will be confirmed at <http://www.agc-cert.com>.



测试报告(Test Report)

报告编号(Report No.): AGC00925200515-004

日期(Date): 2020/06/12

页数(Page): 10 / 16

测试项目 Test Item	测试方法/仪器 Test Method/ Instrument	方法检测限 MDL	限值 Limit
多溴二苯醚 (PBDEs) Polybrominated Diphenylethers (PBDEs) - 一溴二苯醚(MonoBDE) - Monobromodiphenyl ether (MonoBDE) - 二溴二苯醚(DiBDE) - Dibromodiphenyl ether (DiBDE) - 三溴二苯醚(TriBDE) - Tribromodiphenyl ether (TriBDE) - 四溴二苯醚(TetraBDE) - Tetrabromodiphenyl ether (TetraBDE) - 五溴二苯醚(PentaBDE) - Pentabromodiphenyl ether (PentaBDE) - 六溴二苯醚(HexaBDE) - Hexabromodiphenyl ether (HexaBDE) - 七溴二苯醚(HeptaBDE) - Heptabromodiphenyl ether (HeptaBDE) - 八溴二苯醚(OctaBDE) - Octabromodiphenyl ether (OctaBDE) - 九溴二苯醚(NonaBDE) - Nonabromodiphenyl ether (NonaBDE) - 十溴二苯醚(DecaBDE) - Decabromodiphenyl ether (DecaBDE)	IEC 62321-6:2015/ GC-MS	单项 Single 5mg/kg	总和 Sum ≤1000mg/kg
邻苯二甲酸二异丁酯(DIBP) Di-iso-butyl phthalate (DIBP)	IEC 62321-8:2017/ GC-MS	50mg/kg	≤1000mg/kg
邻苯二甲酸二正丁酯(DBP) Dibutyl phthalate (DBP)		50mg/kg	≤1000mg/kg
邻苯二甲酸丁苄酯(BBP) Butylbenzyl phthalate (BBP)		50mg/kg	≤1000mg/kg
邻苯二甲酸二(2-乙基己基)酯(DEHP) Di-(2-ethylhexyl) Phthalate (DEHP)		50mg/kg	≤1000mg/kg

注释 Note:

“≤” = 小于等于 Less than or equal to

The results shown in this test report refer only to the sample(s) tested unless otherwise stated and the sample(s) are retained for 30 days only. The document is issued by AGC, this document cannot be reproduced except in full with our prior written permission. The more details and the authenticity of the report will be confirmed at <http://www.agc-cert.com>.



测试报告(Test Report)

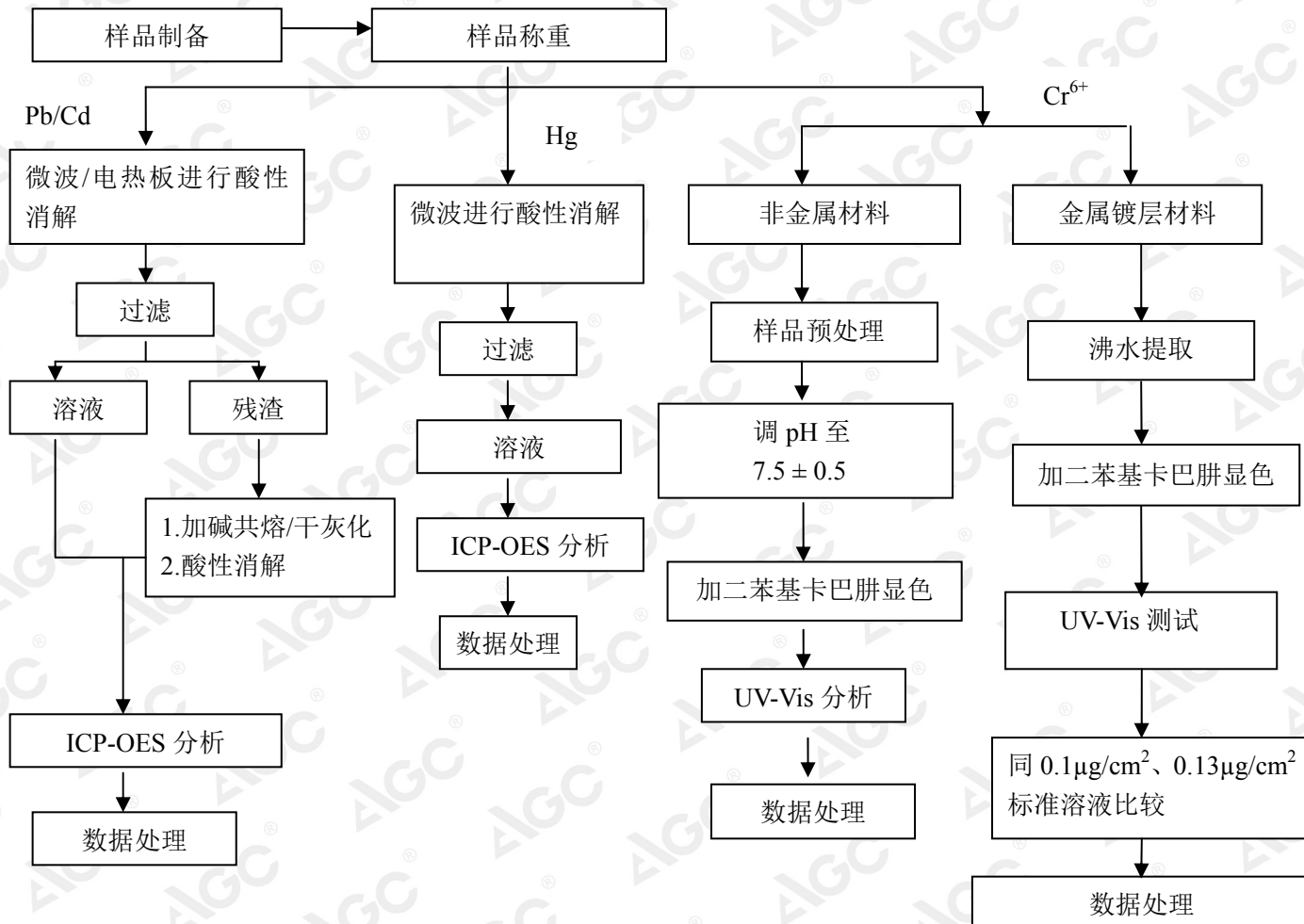
报告编号(Report No.): AGC00925200515-004

日期(Date): 2020/06/12

页数(Page): 11 / 16

测试流程图 (Test Flow Chart)

1. 铅、镉、汞、六价格的测试流程图



根据以上的流程图之条件，样品已经完全溶解（六价格测试方法除外）。

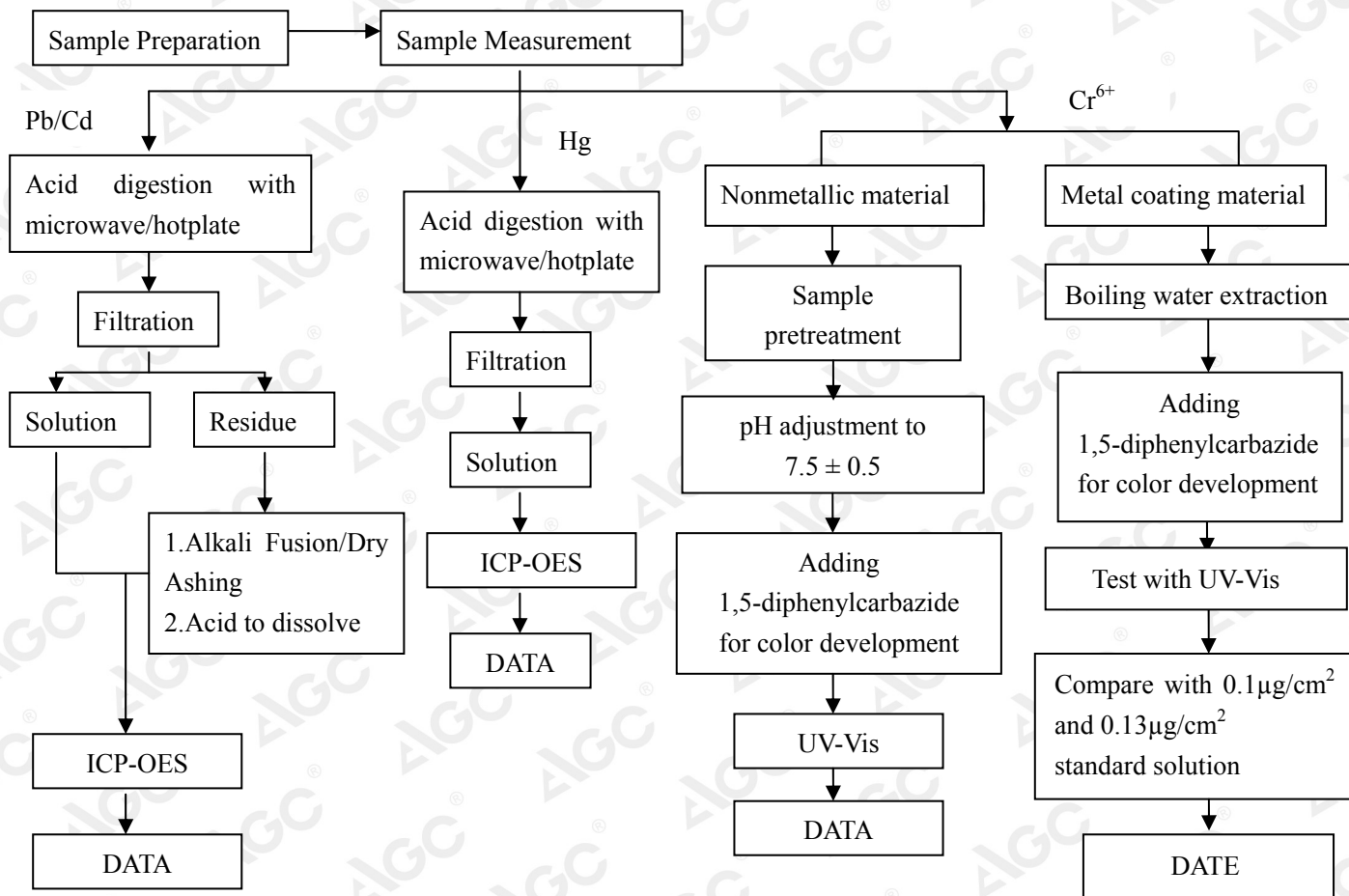
测试报告(Test Report)

报告编号(Report No.): AGC00925200515-004

日期(Date): 2020/06/12

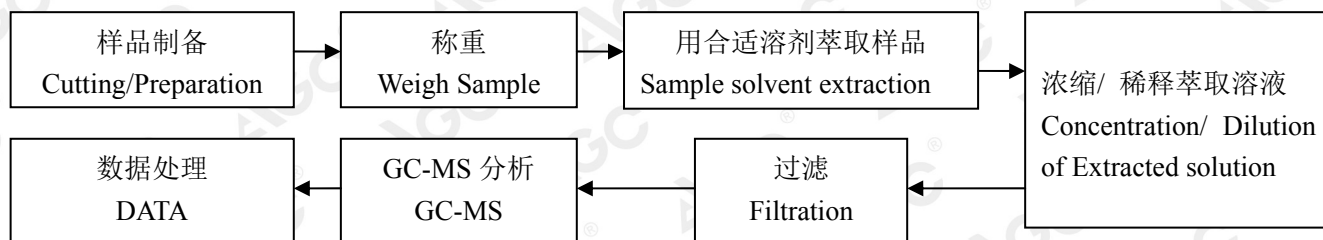
页数(Page): 12 / 16

1. For Pb, Cd, Hg, Cr⁶⁺



These sample were dissolved totally by pre-conditioning method according to above flow chart (Cr⁶⁺ test method excluded)

2. PBBs, PBDEs, DBP, BBP, DEHP 和DIBP的测试流程图(The Test Flow Chart of PBBs, PBDEs, DBP, BBP, DEHP and DIBP)



The results shown in this test report refer only to the sample(s) tested unless otherwise stated and the sample(s) are retained for 30 days only. The document is issued by AGC, this document cannot be reproduced except in full with our prior written permission. The more details and the authenticity of the report will be confirmed at <http://www.agc-cert.com>.

测试报告(Test Report)

报告编号(Report No.): AGC00925200515-004

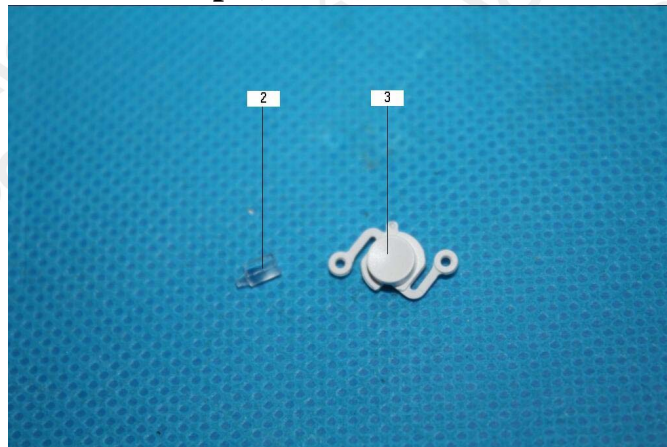
日期(Date): 2020/06/12

页数(Page): 13 / 16

样品附图(The photo of the sample)



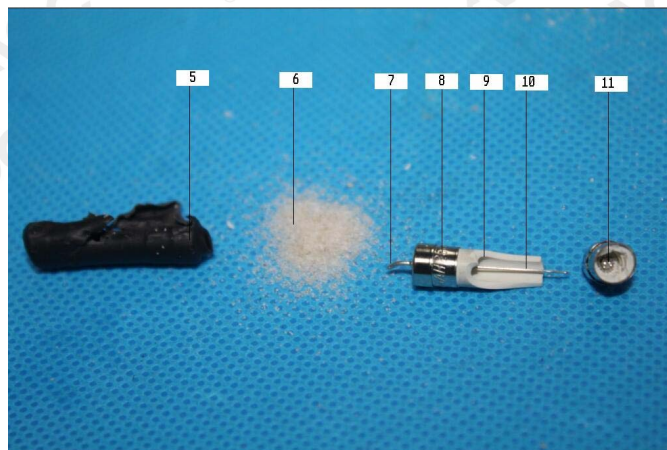
1



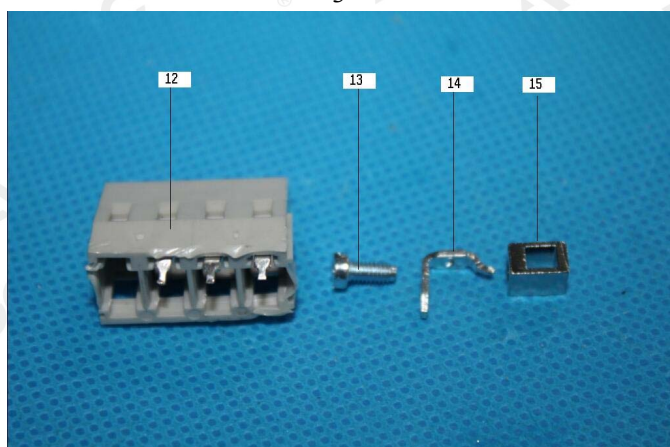
2



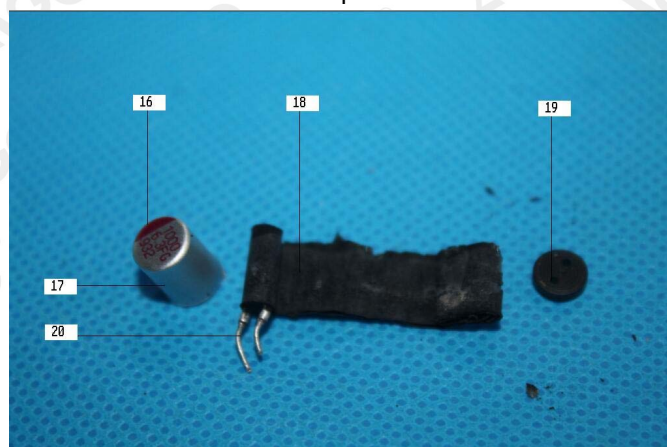
3



4



5



6

The results shown in this test report refer only to the sample(s) tested unless otherwise stated and the sample(s) are retained for 30 days only. The document is issued by AGC, this document cannot be reproduced except in full with our prior written permission. The more details and the authenticity of the report will be confirmed at <http://www.agc-cert.com>.



Attestation of Global Compliance Std. & Tech.

Tel: +86-755 8358 3833 Fax: +86-755 2531 6612 E-mail: agc01@agc-cert.com 400 089 2118
Add: Building 2, No.171, Meihua Road, Shangmeilin, Futian District, Shenzhen, Guangdong China

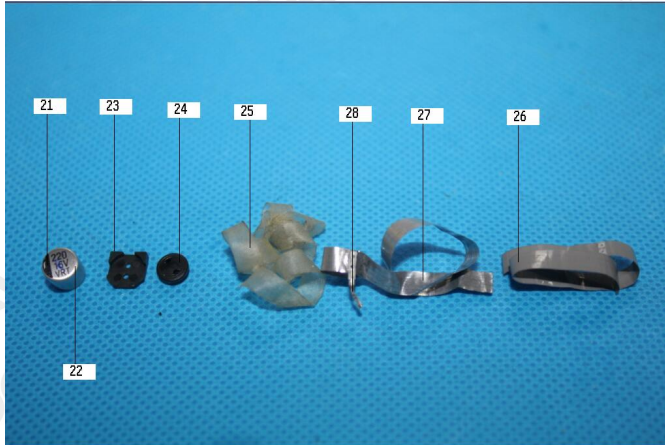
No.18 C

测试报告(Test Report)

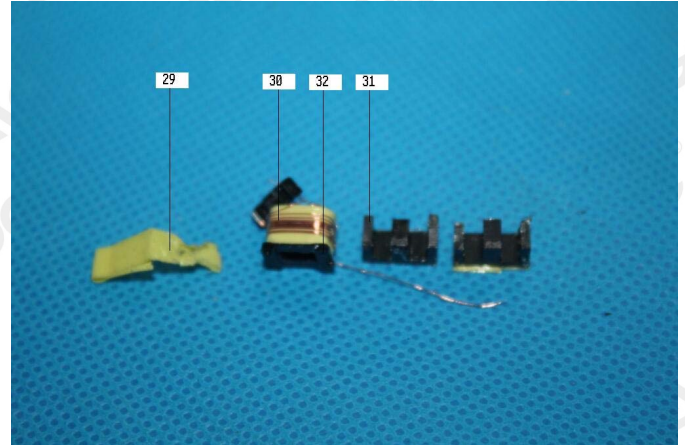
报告编号(Report No.): AGC00925200515-004

日期(Date): 2020/06/12

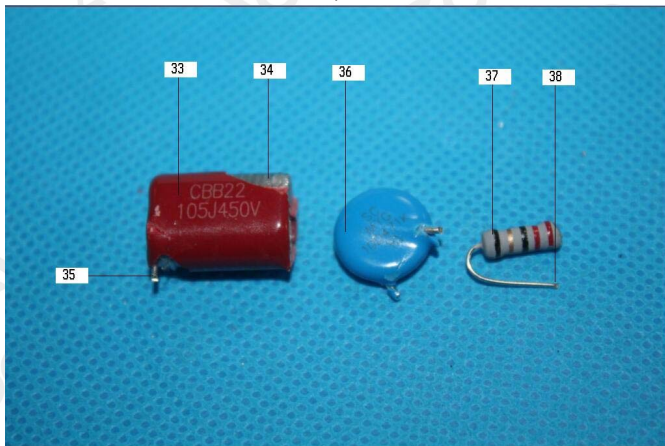
页数(Page): 14 / 16



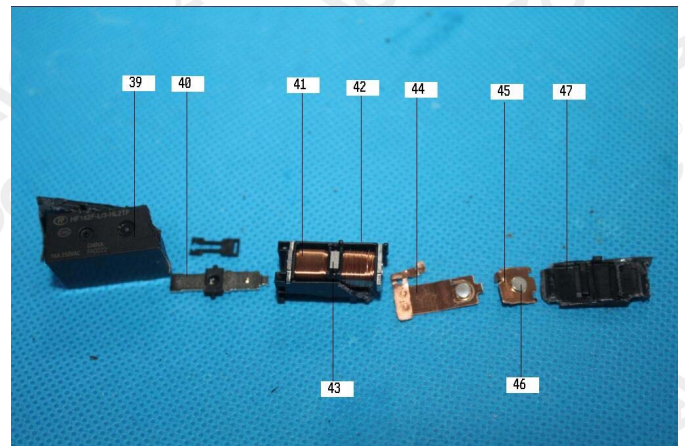
7



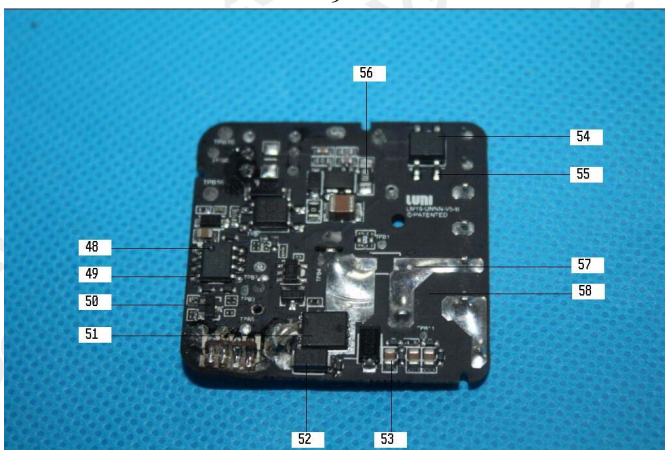
8



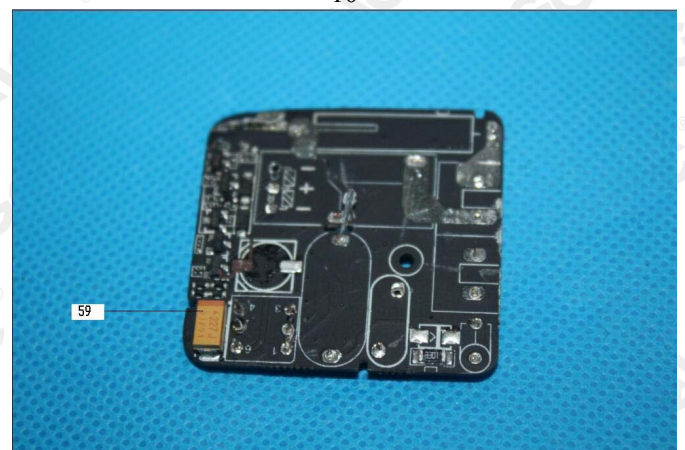
9



10



11



12

The results shown in this test report refer only to the sample(s) tested unless otherwise stated and the sample(s) are retained for 30 days only. The document is issued by AGC, this document cannot be reproduced except in full with our prior written permission. The more details and the authenticity of the report will be confirmed at <http://www.agc-cert.com>.



Attestation of Global Compliance Std. & Tech.

Tel: +86-755 8358 3833 Fax: +86-755 2531 6612 E-mail: agc01@agc-cert.com 400 089 2118
Add: Building 2, No.171, Meihua Road, Shangmeilin, Futian District, Shenzhen, Guangdong China

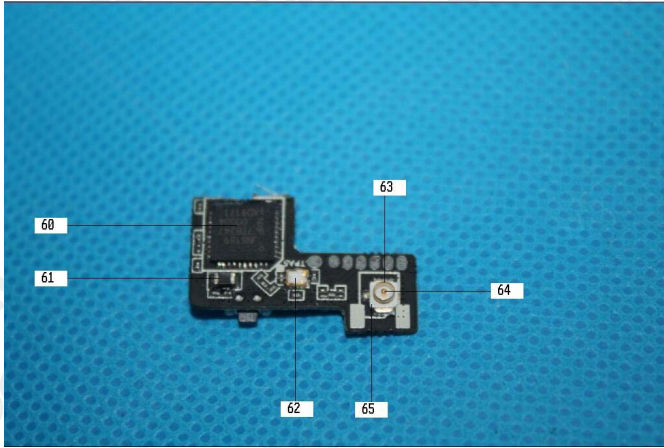
No.18 C

测试报告(Test Report)

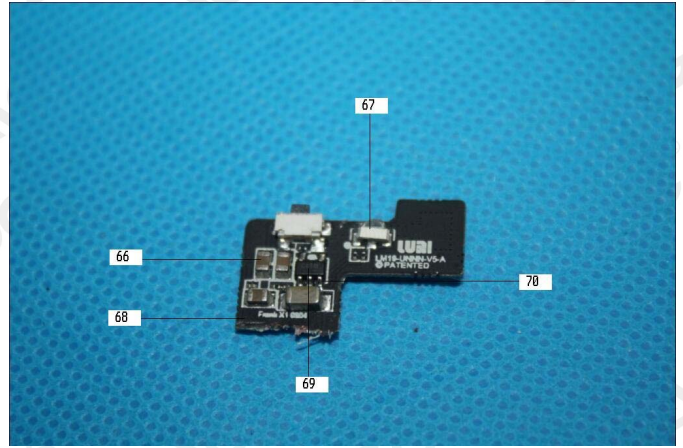
报告编号(Report No.): AGC00925200515-004

日期(Date): 2020/06/12

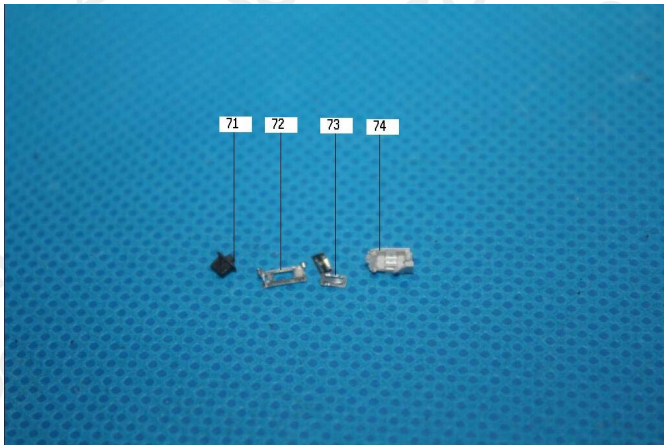
页数(Page): 15 / 16



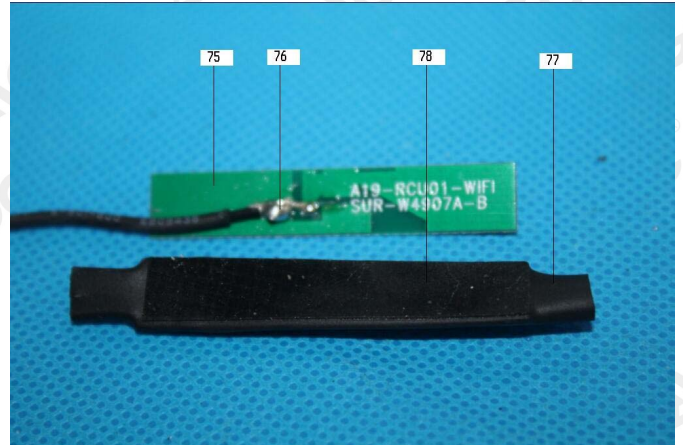
13



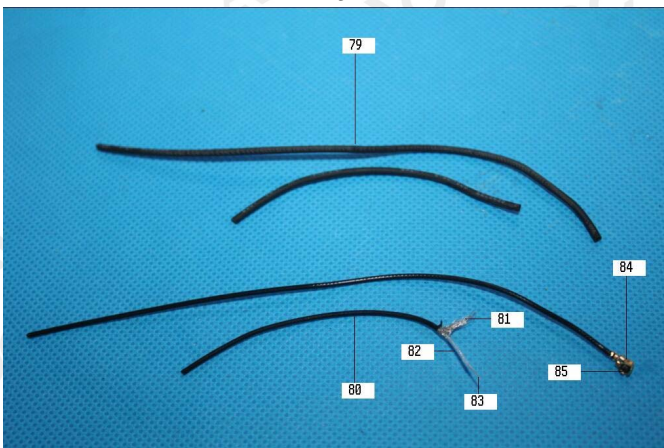
14



15



16



17



18

The results shown in this test report refer only to the sample(s) tested unless otherwise stated and the sample(s) are retained for 30 days only. The document is issued by AGC, this document cannot be reproduced except in full with our prior written permission. The more details and the authenticity of the report will be confirmed at <http://www.agc-cert.com>.



Attestation of Global Compliance Std. & Tech.

Tel: +86-755 8358 3833 Fax: +86-755 2531 6612 E-mail: agc01@agc-cert.com 400 089 2118
Add: Building 2, No.171, Meihua Road, Shangmeilin, Futian District, Shenzhen, Guangdong China

No.18 C

测试报告(Test Report)

报告编号(Report No.): AGC00925200515-004

日期(Date): 2020/06/12

页数(Page): 16 / 16



AGC00925200515-004

此图片仅限于随 AGC 正本报告使用
AGC authenticate the photo only on original report

报告结束

*** End of Report ***

The results shown in this test report refer only to the sample(s) tested unless otherwise stated and the sample(s) are retained for 30 days only. The document is issued by AGC, this document cannot be reproduced except in full with our prior written permission. The more details and the authenticity of the report will be confirmed at <http://www.agc-cert.com>.