

# RoHS 测试报告

## RoHS Test Report

报告编号 : AGC00925211201-002  
Report No.

样品名称 : 智能卷帘伴侣 E1 Roller Shade Driver E1  
SAMPLE NAME

样品型号 : RSD-M01  
MODEL NAME

委托单位 : 深圳绿米联创科技有限公司  
APPLICANT : Lumi United Technology Co., Ltd

检测标准 : 请参见后续页(Please refer to the following page(s)).  
STANDARD(S)

签发日期 : 2022/03/01  
DATE OF ISSUE

**深圳市鑫宇环标准技术有限公司**

***Attestation of Global Compliance (Shenzhen) Std & Tech Co., Ltd.***




Any report having not been signed by authorized approver, or having been altered without authorization, or having not been stamped by the "Dedicated Testing/Inspection Stamp" is deemed to be invalid. Copying or excerpting portion of, or altering the content of the report is not permitted without the written authorization of AGC. The test results presented in the report apply only to the tested sample. Any objections to report issued by AGC should be submitted to AGC within 15days after the issuance of the test report. Further enquiry of validity or verification of the test report should be addressed to AGC by agc@agc-cert.com.



委托单位(Applicant) : 深圳绿米联创科技有限公司 Lumi United Technology Co., Ltd  
深圳市南山区桃源街道留仙大道塘岭路 1 号金骐智谷大厦 8  
楼 8th Floor, JinQi Wisdom Valley, No.1 Tangling  
单位地址(Address) : Road, Liuxian Ave, Taoyuan Residential District, Nanshan  
District, Shenzhen China  
深圳市宝安区航城街道三围社区三围茶西工业区 2 栋 6 层  
6/F., Building 2, Sanwei Chaxi Industrial Park, Sanwei  
测试地址(Test Site) : Community, Hangcheng Street, Bao'an District, Shenzhen,  
Guangdong, China

**样品信息(Report on the submitted sample(s) said to be):**

样品名称(Sample Name) : 智能卷帘伴侣 E1 Roller Shade Driver E1  
型号(Model) : RSD-M01  
商标(Brand): : Aqara  
制造商(Manufacturer) : 深圳绿米联创科技有限公司 Lumi United Technology Co., Ltd  
深圳市南山区桃源街道留仙大道塘岭路 1 号金骐智谷大厦 8 楼  
8th Floor, JinQi Wisdom Valley, No.1 Tangling Road, Liuxian  
地址(Address) : Ave, Taoyuan Residential District, Nanshan District, Shenzhen  
China  
收样日期(Sample Received Date) : 2021/12/17  
测试周期(Testing Period) : 2021/12/17-2021/12/30

Approved by: 

签发: 梁丹(Jessie.Liang)

技术总监(Technical Director)



**测试要求**
**Test Requested:**

根据客户要求, 依据欧盟议会和欧盟理事会第2011/65/EU(RoHS)号指令及修正案(EU) 2015/863的要求, 通过XRF扫描和化学方法对送检样品中的铅、镉、汞、六价铬、多溴联苯、多溴二苯醚、DBP、BBP、DEHP、DIBP的含量进行测定。

As specified by client, to determine the Pb, Cd, Hg, Cr<sup>6+</sup>, PBBs, PBDEs, DBP, BBP, DEHP, DIBP content in the submitted sample in accordance with Directive 2011/65/EU (RoHS) and its amendment directive (EU) 2015/863 on XRF and Chemical Method.

**结论**
**Conclusion**
**合格**
**Pass**
**测试点描述(Test Point Description)**

测试点 Test point	测试模块 Test module	测试部件 Test parts	测试点描述 Test Point Description	
智能卷帘伴侣 E1 Roller Shade Driver E1 (RSD-M01)				
1	---	外壳 Outer shell	白色塑料按键	White plastic button
2	---		白色塑料壳	White plastic shell
3	---		灰色丝印	Grey screen printing
4	---		灰白色塑料底壳	Gray white plastic bottom shell
5	---		白色扫码标签	White scavenging label
6	---		灰色 CE 标签	Grey CE label
7	---		灰白色塑料挂扣	Gray white plastic buckle
8	---		灰白塑料盖	Gray plastic cover
9	---		灰白色塑料件	Gray white plastic parts
10	---	---	银色螺丝	Silver screw
11	---	FFC	蓝色胶片	Blue plastic piece
12	---		白色 FFC	White FFC
13	---		金属丝	Metal wire
14	---	天线 Antenna	黑色天线	Black antenna
15	---		焊锡	Tin solder
16	---		黑色线皮	Black wire jacket
17	---		金属编织线	Metal braided wire
18	---		透明内线皮	Transparent inner wire jacket
19	---		铜端子	Copper terminal
20	---		黑色内胶	Black inner glue
21	电路板 Circuit board	---	贴片二极管	Chip diode
22		---	贴片电容	Chip capacitor
23		---	贴片 IC	Chip IC
24		---	贴片 MOS 管	SMD MOS tube
25		---	贴片排阻	Chip exclusion
26		IC	IC 本体	IC body
27			镀锡	Tin plating
28		---	贴片电阻	Chip resistor
29		端子座	白色塑料座	White plastic seat

Any report having not been signed by authorized approver, or having been altered without authorization, or having not been stamped by the "Dedicated Testing/Inspection Stamp" is deemed to be invalid. Copying or excerpting portion of, or altering the content of the report is not permitted without the written authorization of AGC. The test results presented in the report apply only to the tested sample. Any objections to report issued by AGC should be submitted to AGC within 15 days after the issuance of the test report. Further enquiry of validity or verification of the test report should be addressed to AGC by agc@agc-cert.com.

Attestation of Global Compliance(Shenzhen)Co., Ltd

Attestation of Global Compliance(Shenzhen)Std &amp; Tech Co., Ltd

Tel: +86-755 2523 4088 E-mail: agc@agc-cert.com Web: http://cn.agc-cert.com/





测试点 Test point	测试模块 Test module	测试部件 Test parts	测试点描述 Test Point Description	
30		Terminal block	插针	Contact pin
31		---	焊锡	Tin solder
32		FFC 座	米白色塑料座	White plastic seat
33		FFC holder	黑色塑料扣	Black plastic button
34		---	贴片晶振	Chip crystal oscillator
35		---	贴片磁架电感	Chip magnet frame inductance
36		---	金属圈	Metal ring
37		---	白色塑料座	White plastic seat
38		---	黑色 PCB 板	Black PCB board
39		---	贴片 LED	Chip LED
40		---	白色扫码标签	White scavenging label
41		轻触开关 Touch switch	黑色塑料按钮	Black plastic button
42			银色金属片	Silver metal sheet
43			金属弹片	Metal shrapnel
44			白色塑料座	White plastic seat
45			插针	Contact pin
46		轻触开关 Touch switch	铜色金属按钮	Coppery metal button
47			银色金属壳	Silver metal shell
48			金属弹片	Metal shrapnel
49			茶色胶带	Brown tape
50			黑色塑料座	Black plastic seat
51			引脚	Pin
52		TYPE-C 接头	TYPE-C 金属接头	TYPE-C metal joint
53		TYPE-C connector	黑色塑料接头	Black plastic joint
54			插针	Contact pin
55		电解电容 Electrolytic capacitor	铝壳	Aluminum shell
56			正极箔	Anode foil
57			黑色胶塞	Black rubber plug
58			引脚	Pin
59			黑色塑料底座	Black plastic base seat
60			负极箔	Cathode foil
61			电解纸	Electrolytic paper
62	---	电机座 Motor base	黑色塑料壳	Black plastic shell
63	---		银色金属轴	Silver metal axis
64	---		银色金属圈	Silvery metal ring
65	---		黑色塑料壳	Black plastic shell
66	---		铜色金属圈	Coppery metal ring
67	---		白色标签	White label
68	---		金属齿轮	Metal gear
69	---		白色塑料齿轮	White plastic gear
70	---		金属转轴	Metal rotating shaft
71	---		金属齿轮	Metal gear
72	---		古铜色金属齿轮	Bronze metal gear

Any report having not been signed by authorized approver, or having been altered without authorization, or having not been stamped by the "Dedicated Testing/Inspection Stamp" is deemed to be invalid. Copying or excerpting portion of, or altering the content of the report is not permitted without the written authorization of AGC. The test results presented in the report apply only to the tested sample. Any objections to report issued by AGC should be submitted to AGC within 15 days after the issuance of the test report. Further enquiry of validity or verification of the test report should be addressed to AGC by agc@agc-cert.com.



测试点 Test point	测试模块 Test module	测试部件 Test parts	测试点描述 Test Point Description	
73	---	电机 Motor	黑色磁圈	Black magnet ring
74	---		白色塑料齿轮	White plastic gear
75	---		银色金属轴	Silver metal axis
76	---		银色螺丝	Silver screw
77	---		银色自攻螺丝	Silver self-tapping screw
78	---		银色金属壳	Silver metal shell
79	---		铜圈	Copper ring
80	---		金属卡扣	Metal card buckle
81	---		黑色磁铁	Black magnet
82	---		白色垫圈	White washer
83	---		蓝色垫圈	Blue washer
84	---		黑色垫圈	Black washer
85	---		铜色金属轴套	Copper metal shaft sleeve
86	---		银色磁铁圈	Silver magnet ring
87	---		黑色塑料骨架	Black plastic skeleton
88	---		焊锡	Tin solder
89	---		黑色电阻	Black resistor
90	---		红色垫圈	Red washer
91	---		铜端子	Copper terminal
92	---		硅钢片	Silicon steel sheets
93	---	漆包线	Enameled wire	
94	---	白色胶片	White plastic piece	
95	---	银色金属轴	Silver metal axis	
96	---	米白色塑料支架	Creamy white plastic stent	
97	---	黑色胶片	Black plastic piece	
98	---	碳刷	Carbon brush	
99	---	红铜触片	Red copper contact	
100	---	铜圈	Copper ring	
101	---	金属底盖	Metal bottom cover	
102	---	铜接脚	Copper pin	
103	电机电路板 Motor circuit board	FFC 座 FFC holder	黑色塑料扣	Black plastic button
104			白色塑料座	White plastic seat
105			插针	Contact pin
106		---	贴片二极管	Chip diode
107		---	贴片电容	Chip capacitor
108		---	贴片三极管	Chip triode
109		---	贴片电阻	Chip resistor
110		---	焊锡	Tin solder
111	---	PCB 板	PCB board	
112	---	电池 Battery	浅蓝色套管	Light blue tube
113	---		黑色双面胶	Black double-sided adhesive
114	---		蓝色胶带	Blue tape
115	---		茶色胶带	Brown tape
116	---		红色绝缘片	Red insulating sheet

Any report having not been signed by authorized approver, or having been altered without authorization, or having not been stamped by the "Dedicated Testing/Inspection Stamp" is deemed to be invalid. Copying or excerpting portion of, or altering the content of the report is not permitted without the written authorization of AGC. The test results presented in the report apply only to the tested sample. Any objections to report issued by AGC should be submitted to AGC within 15days after the issuance of the test report. Further enquiry of validity or verification of the test report should be addressed to AGC by agc@agc-cert.com.



测试点 Test point	测试模块 Test module	测试部件 Test parts	测试点描述 Test Point Description	
117	---		黑色泡棉条	Black foam strip
118	---		银色标签	Silver label
119	---		焊锡	Tin solder
120	---		黄胶	Yellow glue
121	---		PCB 板	PCB board
122	---		贴片电容	Chip capacitor
123	---		贴片电阻	Chip resistor
124	---		贴片 IC	Chip IC
125	---		镀锡引脚	Tin plated pin
126	---		贴片保险丝	Chip Fuse
127	---	电池端子连接线 Battery terminal connection wire	白色塑料端子	White plastic terminal
128	---		插针	Contact pin
129	---		白色线皮	White wire jacket
130	---		线芯	Wire core
131	---		黑色线皮	Black wire jacket
132	---		红色线皮	Red wire jacket
USB 线 USB line				
133	---	USB 插头 USB plug	白色握柄	White handle
134	---		焊锡	Tin solder
135	---		白色塑料插头	White plastic plug
136	---		插针	Contact pin
137	---		USB 金属插头	USB metal plug
138	---	TYPE-C 插头 TYPE-C plug	白色握柄	White handle
139	---		乳白色内胶	Milk white inner glue
140	---		TYPE-C 金属插头	Type-c metal plug
141	---		焊锡	Tin solder
142	---		绿色 PCB 板	Green PCB board
143	---		银色金属顶针	Silver Metal Thimble
144	---		铜色插针	Copper pin
145	---		黑色塑料插头	Black plastic plug
146	---	贴片电阻	Chip resistor	
147	---	线材 Wire rod	白色外线皮	White outer wire jacket
148	---		线芯	Wire core
149	---		红色线皮	Red wire jacket
150	---		黑色线皮	Black wire jacket
151	---		白色线皮	White wire jacket
152	---		绿色线皮	Green wire jacket
配件 Accessory				
153	---	---	灰白色塑料件	Gray white plastic parts
154	---	---	灰白色塑料件	Gray white plastic parts
155	---	---	灰白色塑料件	Gray white plastic parts
156	---	---	白色塑料螺塞	White plastic screw plug
157	---	---	黑色螺丝	Black screw
158	---	---	黑色双面胶	Black double-sided adhesive

Any report having not been signed by authorized approver, or having been altered without authorization, or having not been stamped by the "Dedicated Testing/Inspection Stamp" is deemed to be invalid. Copying or excerpting portion of, or altering the content of the report is not permitted without the written authorization of AGC. The test results presented in the report apply only to the tested sample. Any objections to report issued by AGC should be submitted to AGC within 15 days after the issuance of the test report. Further enquiry of validity or verification of the test report should be addressed to AGC by agc@agc-cert.com.





注：“---” = 该测试点在样品中单独存在，不依附于测试模块或测试部件。

Note: "---" = The test point exists alone in the sample and is not attached to the test module or test parts.

**测试结果(Test Result):**

(测试方法/仪器/方法检出限及限值：见附件)

(Test Method/ Instrument/ MDL and Limit: See Appendix)

测试点 Test point	测试结果 Test result (mg/kg)										结论 Conclusion
	Pb	Cd	Hg	Cr <sup>6+</sup>	PBBs	PBDEs	DIBP	DBP	BBP	DEHP	
1	N.D.	N.D.	N.D.	N.D.	N.D.*	N.D.*	N.D.*	N.D.*	N.D.*	N.D.*	符合 Conformity
2	N.D.	N.D.	N.D.	N.D.	N.D.*	N.D.*	N.D.*	N.D.*	N.D.*	N.D.*	符合 Conformity
3	N.D.	N.D.	N.D.	371	N.D.*	N.D.*	N.D.*	N.D.*	N.D.*	N.D.*	符合 Conformity
4	N.D.	N.D.	N.D.	N.D.	N.D.*	N.D.*	N.D.*	N.D.*	N.D.*	N.D.*	符合 Conformity
5	N.D.	N.D.	N.D.	N.D.	N.D.	N.D.	N.D.*	N.D.*	N.D.*	N.D.*	符合 Conformity
6	N.D.	N.D.	N.D.	366	N.D.	N.D.	N.D.*	N.D.*	N.D.*	N.D.*	符合 Conformity
7	N.D.	N.D.	N.D.	N.D.	N.D.*	N.D.*	N.D.*	N.D.*	N.D.*	N.D.*	符合 Conformity
8	N.D.	N.D.	N.D.	N.D.	N.D.*	N.D.*	N.D.*	N.D.*	N.D.*	N.D.*	符合 Conformity
9	N.D.	N.D.	N.D.	256	N.D.*	N.D.*	N.D.*	N.D.*	N.D.*	N.D.*	符合 Conformity
10	399	N.D.	N.D.	N.D.	N/A	N/A	N/A	N/A	N/A	N/A	符合 Conformity
11	N.D.	N.D.	N.D.	N.D.	N.D.*	N.D.*	N.D.*	N.D.*	N.D.*	N.D.*	符合 Conformity
12	N.D.	N.D.	N.D.	N.D.	N.D.*	N.D.*	N.D.*	N.D.*	N.D.*	N.D.*	符合 Conformity
13	N.D.	N.D.	N.D.	N.D.	N/A	N/A	N/A	N/A	N/A	N/A	符合 Conformity
14	N.D.	N.D.	N.D.	N.D.	N.D.	N.D.	N.D.*	N.D.*	N.D.*	N.D.*	符合 Conformity
15	N.D.	N.D.	N.D.	N.D.	N/A	N/A	N/A	N/A	N/A	N/A	符合 Conformity
16	N.D.	N.D.	N.D.	N.D.	N.D.	N.D.	N.D.*	N.D.*	N.D.*	N.D.*	符合 Conformity
17	N.D.	N.D.	N.D.	N.D.	N/A	N/A	N/A	N/A	N/A	N/A	符合 Conformity
18	N.D.	N.D.	N.D.	N.D.	N.D.	N.D.	N.D.*	N.D.*	N.D.*	N.D.*	符合 Conformity

Any report having not been signed by authorized approver, or having been altered without authorization, or having not been stamped by the "Dedicated Testing/Inspection Stamp" is deemed to be invalid. Copying or excerpting portion of, or altering the content of the report is not permitted without the written authorization of AGC. The test results presented in the report apply only to the tested sample. Any objections to report issued by AGC should be submitted to AGC within 15days after the issuance of the test report. Further enquiry of validity or verification of the test report should be addressed to AGC by agc@agc-cert.com.



测试点 Test point	测试结果 Test result (mg/kg)										结论 Conclusion
	Pb	Cd	Hg	Cr <sup>6+</sup>	PBBs	PBDEs	DIBP	DBP	BBP	DEHP	
19	N.D.	N.D.	N.D.	N.D.	N/A	N/A	N/A	N/A	N/A	N/A	符合 Conformity
20	661	N.D.	N.D.	N.D.	N.D.	N.D.	N.D.*	N.D.*	N.D.*	N.D.*	符合 Conformity
21	17004*	N.D.	224	N.D.	N.D.	N.D.	N.D.*	N.D.*	N.D.*	N.D.*	/
22	N.D.	N.D.	N.D.	N.D.	N.D.	N.D.	N.D.*	N.D.*	N.D.*	N.D.*	符合 Conformity
23	N.D.	N.D.	N.D.	206	N.D.	N.D.	N.D.*	N.D.*	N.D.*	N.D.*	符合 Conformity
24	N.D.	N.D.	N.D.	N.D.	N.D.	N.D.	N.D.*	N.D.*	N.D.*	N.D.*	符合 Conformity
25	N.D.	N.D.	N.D.	N.D.	N.D.	N.D.	N.D.*	N.D.*	N.D.*	N.D.*	符合 Conformity
26	N.D.	N.D.	N.D.	N.D.	N.D.	N.D.	N.D.*	N.D.*	N.D.*	N.D.*	符合 Conformity
27	N.D.	N.D.	N.D.	N.D.	N/A	N/A	N/A	N/A	N/A	N/A	符合 Conformity
28	N.D.	N.D.	N.D.	432	N.D.	N.D.	N.D.*	N.D.*	N.D.*	N.D.*	符合 Conformity
29	N.D.	N.D.	N.D.	N.D.	N.D.	N.D.	N.D.*	N.D.*	N.D.*	N.D.*	符合 Conformity
30	N.D.	N.D.	N.D.	N.D.	N/A	N/A	N/A	N/A	N/A	N/A	符合 Conformity
31	N.D.	N.D.	N.D.	N.D.	N/A	N/A	N/A	N/A	N/A	N/A	符合 Conformity
32	N.D.	N.D.	N.D.	N.D.	N.D.	N.D.	N.D.*	N.D.*	N.D.*	N.D.*	符合 Conformity
33	N.D.	N.D.	N.D.	N.D.	N.D.	N.D.	N.D.*	N.D.*	N.D.*	N.D.*	符合 Conformity
34	N.D.	N.D.	N.D.	N.D.	N.D.	N.D.	N.D.*	N.D.*	N.D.*	N.D.*	符合 Conformity
35	N.D.	N.D.	N.D.	N.D.	N.D.	N.D.	N.D.*	N.D.*	N.D.*	N.D.*	符合 Conformity
36	N.D.	N.D.	N.D.	N.D.	N/A	N/A	N/A	N/A	N/A	N/A	符合 Conformity
37	N.D.	N.D.	N.D.	267	N.D.	N.D.	N.D.*	N.D.*	N.D.*	N.D.*	符合 Conformity
38	N.D.	N.D.	N.D.	N.D.	N.D.*	N.D.*	N.D.*	N.D.*	N.D.*	N.D.*	符合 Conformity
39	N.D.	N.D.	N.D.	N.D.	N.D.	N.D.	N.D.*	N.D.*	N.D.*	N.D.*	符合 Conformity
40	N.D.	N.D.	N.D.	N.D.	N.D.	N.D.	N.D.*	N.D.*	N.D.*	N.D.*	符合 Conformity

Any report having not been signed by authorized approver, or having been altered without authorization, or having not been stamped by the "Dedicated Testing/Inspection Stamp" is deemed to be invalid. Copying or excerpting portion of, or altering the content of the report is not permitted without the written authorization of AGC. The test results presented in the report apply only to the tested sample. Any objections to report issued by AGC should be submitted to AGC within 15days after the issuance of the test report. Further enquiry of validity or verification of the test report should be addressed to AGC by agc@agc-cert.com.





测试点 Test point	测试结果 Test result (mg/kg)										结论 Conclusion
	Pb	Cd	Hg	Cr <sup>6+</sup>	PBBs	PBDEs	DIBP	DBP	BBP	DEHP	
41	N.D.	N.D.	N.D.	N.D.	N.D.	N.D.	N.D.*	N.D.*	N.D.*	N.D.*	符合 Conformity
42	N.D.	N.D.	N.D.	N.D.	N/A	N/A	N/A	N/A	N/A	N/A	符合 Conformity
43	N.D.	N.D.	N.D.	N.D.*	N/A	N/A	N/A	N/A	N/A	N/A	符合 Conformity
44	N.D.	N.D.	N.D.	N.D.	N.D.	N.D.	N.D.*	N.D.*	N.D.*	N.D.*	符合 Conformity
45	N.D.	N.D.	N.D.	N.D.	N/A	N/A	N/A	N/A	N/A	N/A	符合 Conformity
46	243	N.D.	N.D.	N.D.	N/A	N/A	N/A	N/A	N/A	N/A	符合 Conformity
47	N.D.	N.D.	N.D.	N.D.*	N/A	N/A	N/A	N/A	N/A	N/A	符合 Conformity
48	N.D.	N.D.	N.D.	N.D.*	N/A	N/A	N/A	N/A	N/A	N/A	符合 Conformity
49	N.D.	N.D.	N.D.	N.D.	N.D.	N.D.	N.D.*	N.D.*	N.D.*	N.D.*	符合 Conformity
50	N.D.	N.D.	N.D.	N.D.	N.D.	N.D.	N.D.*	N.D.*	N.D.*	N.D.*	符合 Conformity
51	N.D.	N.D.	N.D.	N.D.	N/A	N/A	N/A	N/A	N/A	N/A	符合 Conformity
52	N.D.	N.D.	N.D.	N.D.*	N/A	N/A	N/A	N/A	N/A	N/A	符合 Conformity
53	N.D.	N.D.	N.D.	649	N.D.	N.D.	N.D.*	N.D.*	N.D.*	N.D.*	符合 Conformity
54	N.D.	N.D.	N.D.	N.D.	N/A	N/A	N/A	N/A	N/A	N/A	符合 Conformity
55	N.D.	N.D.	N.D.	N.D.	N/A	N/A	N/A	N/A	N/A	N/A	符合 Conformity
56	N.D.	N.D.	N.D.	N.D.	N/A	N/A	N/A	N/A	N/A	N/A	符合 Conformity
57	N.D.	N.D.	N.D.	N.D.	N.D.	N.D.	N.D.*	N.D.*	N.D.*	N.D.*	符合 Conformity
58	N.D.	N.D.	N.D.	N.D.	N/A	N/A	N/A	N/A	N/A	N/A	符合 Conformity
59	N.D.	N.D.	N.D.	N.D.	N.D.	N.D.	N.D.*	N.D.*	N.D.*	N.D.*	符合 Conformity
60	N.D.	N.D.	N.D.	N.D.	N/A	N/A	N/A	N/A	N/A	N/A	符合 Conformity
61	N.D.	N.D.	N.D.	N.D.	N.D.	N.D.	N.D.*	N.D.*	N.D.*	N.D.*	符合 Conformity
62	N.D.	N.D.	N.D.	N.D.	N.D.	N.D.	N.D.*	N.D.*	N.D.*	N.D.*	符合 Conformity

Any report having not been signed by authorized approver, or having been altered without authorization, or having not been stamped by the "Dedicated Testing/Inspection Stamp" is deemed to be invalid. Copying or excerpting portion of, or altering the content of the report is not permitted without the written authorization of AGC. The test results presented in the report apply only to the tested sample. Any objections to report issued by AGC should be submitted to AGC within 15days after the issuance of the test report. Further enquiry of validity or verification of the test report should be addressed to AGC by agc@agc-cert.com.



测试点 Test point	测试结果 Test result (mg/kg)										结论 Conclusion
	Pb	Cd	Hg	Cr <sup>6+</sup>	PBBs	PBDEs	DIBP	DBP	BBP	DEHP	
63	N.D.	N.D.	N.D.	N.D.*	N/A	N/A	N/A	N/A	N/A	N/A	符合 Conformity
64	226	N.D.	N.D.	308	N/A	N/A	N/A	N/A	N/A	N/A	符合 Conformity
65	N.D.	N.D.	N.D.	N.D.	N.D.	N.D.	N.D.*	N.D.*	N.D.*	N.D.*	符合 Conformity
66	24536*	N.D.	N.D.	N.D.	N/A	N/A	N/A	N/A	N/A	N/A	/
67	N.D.	N.D.	N.D.	N.D.	N.D.	N.D.	N.D.*	N.D.*	N.D.*	N.D.*	符合 Conformity
68	1566*	N.D.	N.D.	614	N/A	N/A	N/A	N/A	N/A	N/A	/
69	N.D.	N.D.	N.D.	N.D.	N.D.	N.D.	N.D.*	N.D.*	N.D.*	N.D.*	符合 Conformity
70	N.D.	N.D.	N.D.	N.D.*	N/A	N/A	N/A	N/A	N/A	N/A	符合 Conformity
71	N.D.	N.D.	N.D.	N.D.*	N/A	N/A	N/A	N/A	N/A	N/A	符合 Conformity
72	N.D.	N.D.	N.D.	N.D.	N/A	N/A	N/A	N/A	N/A	N/A	符合 Conformity
73	567	N.D.	N.D.	468	N.D.	N.D.	N.D.*	N.D.*	N.D.*	N.D.*	符合 Conformity
74	N.D.	N.D.	N.D.	N.D.	N.D.	N.D.	N.D.*	N.D.*	N.D.*	N.D.*	符合 Conformity
75	N.D.	N.D.	N.D.	N.D.*	N/A	N/A	N/A	N/A	N/A	N/A	符合 Conformity
76	N.D.	N.D.	N.D.	234	N/A	N/A	N/A	N/A	N/A	N/A	符合 Conformity
77	N.D.	N.D.	N.D.	N.D.	N/A	N/A	N/A	N/A	N/A	N/A	符合 Conformity
78	421	N.D.	N.D.	N.D.	N/A	N/A	N/A	N/A	N/A	N/A	符合 Conformity
79	N.D.	N.D.	N.D.	N.D.	N/A	N/A	N/A	N/A	N/A	N/A	符合 Conformity
80	N.D.	N.D.	N.D.	220	N/A	N/A	N/A	N/A	N/A	N/A	符合 Conformity
81	N.D.	N.D.	N.D.	N.D.	N/A	N/A	N/A	N/A	N/A	N/A	符合 Conformity
82	N.D.	N.D.	N.D.	N.D.	N.D.	N.D.	N.D.*	N.D.*	N.D.*	N.D.*	符合 Conformity
83	N.D.	N.D.	N.D.	N.D.	N.D.	N.D.	N.D.*	N.D.*	N.D.*	N.D.*	符合 Conformity
84	N.D.	N.D.	N.D.	N.D.	N.D.	N.D.	N.D.*	N.D.*	N.D.*	N.D.*	符合 Conformity
85	26094*	N.D.	N.D.	304	N/A	N/A	N/A	N/A	N/A	N/A	/

Any report having not been signed by authorized approver, or having been altered without authorization, or having not been stamped by the "Dedicated Testing/Inspection Stamp" is deemed to be invalid. Copying or excerpting portion of, or altering the content of the report is not permitted without the written authorization of AGC. The test results presented in the report apply only to the tested sample. Any objections to report issued by AGC should be submitted to AGC within 15days after the issuance of the test report. Further enquiry of validity or verification of the test report should be addressed to AGC by agc@agc-cert.com.



测试点 Test point	测试结果 Test result (mg/kg)										结论 Conclusion
	Pb	Cd	Hg	Cr <sup>6+</sup>	PBBs	PBDEs	DIBP	DBP	BBP	DEHP	
86	N.D.	N.D.	N.D.	N.D.	N/A	N/A	N/A	N/A	N/A	N/A	符合 Conformity
87	N.D.	N.D.	N.D.	N.D.	N.D.	N.D.	N.D.*	N.D.*	N.D.*	N.D.*	符合 Conformity
88	N.D.	N.D.	N.D.	N.D.	N/A	N/A	N/A	N/A	N/A	N/A	符合 Conformity
89	N.D.	N.D.	N.D.	N.D.*	N.D.	N.D.	N.D.*	N.D.*	N.D.*	N.D.*	符合 Conformity
90	N.D.	N.D.	N.D.	N.D.	N.D.	N.D.	N.D.*	N.D.*	N.D.*	N.D.*	符合 Conformity
91	N.D.	N.D.	N.D.	N.D.	N/A	N/A	N/A	N/A	N/A	N/A	符合 Conformity
92	N.D.	N.D.	N.D.	N.D.*	N/A	N/A	N/A	N/A	N/A	N/A	符合 Conformity
93	N.D.	N.D.	N.D.	N.D.	N.D.	N.D.	N.D.*	N.D.*	N.D.*	N.D.*	符合 Conformity
94	N.D.	N.D.	N.D.	N.D.	N.D.	N.D.	N.D.*	N.D.*	N.D.*	N.D.*	符合 Conformity
95	N.D.	N.D.	N.D.	N.D.*	N/A	N/A	N/A	N/A	N/A	N/A	符合 Conformity
96	N.D.	N.D.	N.D.	N.D.	N.D.	N.D.	N.D.*	N.D.*	N.D.*	N.D.*	符合 Conformity
97	N.D.	N.D.	N.D.	N.D.	N.D.	N.D.	N.D.*	N.D.*	N.D.*	N.D.*	符合 Conformity
98	N.D.	N.D.	N.D.	N.D.	N.D.	N.D.	N.D.*	N.D.*	N.D.*	N.D.*	符合 Conformity
99	N.D.	N.D.	N.D.	N.D.	N/A	N/A	N/A	N/A	N/A	N/A	符合 Conformity
100	N.D.	N.D.	N.D.	374	N/A	N/A	N/A	N/A	N/A	N/A	符合 Conformity
101	N.D.	N.D.	N.D.	206	N/A	N/A	N/A	N/A	N/A	N/A	符合 Conformity
102	N.D.	N.D.	N.D.	N.D.	N/A	N/A	N/A	N/A	N/A	N/A	符合 Conformity
103	N.D.	N.D.	N.D.	N.D.	N.D.	N.D.	N.D.*	N.D.*	N.D.*	N.D.*	符合 Conformity
104	N.D.	N.D.	N.D.	N.D.	N.D.	N.D.	N.D.*	N.D.*	N.D.*	N.D.*	符合 Conformity
105	N.D.	N.D.	N.D.	N.D.	N/A	N/A	N/A	N/A	N/A	N/A	符合 Conformity
106	46794*	N.D.	N.D.	N.D.	N.D.	N.D.	N.D.*	N.D.*	N.D.*	N.D.*	/
107	N.D.	N.D.	N.D.	N.D.	N.D.	N.D.	N.D.*	N.D.*	N.D.*	N.D.*	符合 Conformity

Any report having not been signed by authorized approver, or having been altered without authorization, or having not been stamped by the "Dedicated Testing/Inspection Stamp" is deemed to be invalid. Copying or excerpting portion of, or altering the content of the report is not permitted without the written authorization of AGC. The test results presented in the report apply only to the tested sample. Any objections to report issued by AGC should be submitted to AGC within 15days after the issuance of the test report. Further enquiry of validity or verification of the test report should be addressed to AGC by agc@agc-cert.com.





测试点 Test point	测试结果 Test result (mg/kg)										结论 Conclusion
	Pb	Cd	Hg	Cr <sup>6+</sup>	PBBs	PBDEs	DIBP	DBP	BBP	DEHP	
108	N.D.	N.D.	N.D.	N.D.	N.D.	N.D.	N.D.*	N.D.*	N.D.*	N.D.*	符合 Conformity
109	N.D.	N.D.	N.D.	N.D.	N.D.	N.D.	N.D.*	N.D.*	N.D.*	N.D.*	符合 Conformity
110	N.D.	N.D.	N.D.	N.D.	N/A	N/A	N/A	N/A	N/A	N/A	符合 Conformity
111	N.D.	N.D.	N.D.	N.D.	N.D.*	N.D.*	N.D.*	N.D.*	N.D.*	N.D.*	符合 Conformity
112	N.D.	N.D.	N.D.	N.D.	N.D.	N.D.	N.D.*	N.D.*	N.D.*	N.D.*	符合 Conformity
113	N.D.	N.D.	N.D.	N.D.	N.D.	N.D.	N.D.*	N.D.*	N.D.*	N.D.*	符合 Conformity
114	N.D.	N.D.	N.D.	N.D.	N.D.	N.D.	N.D.*	N.D.*	N.D.*	N.D.*	符合 Conformity
115	N.D.	N.D.	N.D.	N.D.	N.D.	N.D.	N.D.*	N.D.*	N.D.*	N.D.*	符合 Conformity
116	N.D.	N.D.	N.D.	N.D.	N.D.	N.D.	N.D.*	N.D.*	N.D.*	N.D.*	符合 Conformity
117	N.D.	N.D.	N.D.	N.D.	N.D.	N.D.	N.D.*	N.D.*	N.D.*	N.D.*	符合 Conformity
118	N.D.	N.D.	N.D.	N.D.	N.D.	N.D.	N.D.*	N.D.*	N.D.*	N.D.*	符合 Conformity
119	N.D.	N.D.	N.D.	N.D.	N/A	N/A	N/A	N/A	N/A	N/A	符合 Conformity
120	N.D.	N.D.	N.D.	N.D.	N.D.	N.D.	N.D.*	N.D.*	N.D.*	N.D.*	符合 Conformity
121	N.D.	N.D.	N.D.	N.D.	N.D.*	N.D.*	N.D.*	N.D.*	N.D.*	N.D.*	符合 Conformity
122	N.D.	N.D.	N.D.	N.D.	N.D.	N.D.	N.D.*	N.D.*	N.D.*	N.D.*	符合 Conformity
123	N.D.	N.D.	N.D.	N.D.	N.D.	N.D.	N.D.*	N.D.*	N.D.*	N.D.*	符合 Conformity
124	N.D.	N.D.	N.D.	N.D.	N.D.	N.D.	N.D.*	N.D.*	N.D.*	N.D.*	符合 Conformity
125	N.D.	N.D.	N.D.	N.D.	N/A	N/A	N/A	N/A	N/A	N/A	符合 Conformity
126	N.D.	N.D.	N.D.	N.D.	N.D.	N.D.	N.D.*	N.D.*	N.D.*	N.D.*	符合 Conformity
127	N.D.	N.D.	N.D.	N.D.	N.D.	N.D.	N.D.*	N.D.*	N.D.*	N.D.*	符合 Conformity
128	N.D.	N.D.	N.D.	N.D.	N/A	N/A	N/A	N/A	N/A	N/A	符合 Conformity
129	N.D.	N.D.	N.D.	N.D.	N.D.	N.D.	N.D.*	N.D.*	N.D.*	N.D.*	符合 Conformity

Any report having not been signed by authorized approver, or having been altered without authorization, or having not been stamped by the "Dedicated Testing/Inspection Stamp" is deemed to be invalid. Copying or excerpting portion of, or altering the content of the report is not permitted without the written authorization of AGC. The test results presented in the report apply only to the tested sample. Any objections to report issued by AGC should be submitted to AGC within 15days after the issuance of the test report. Further enquiry of validity or verification of the test report should be addressed to AGC by agc@agc-cert.com.



测试点 Test point	测试结果 Test result (mg/kg)										结论 Conclusion
	Pb	Cd	Hg	Cr <sup>6+</sup>	PBBs	PBDEs	DIBP	DBP	BBP	DEHP	
130	N.D.	N.D.	N.D.	N.D.	N/A	N/A	N/A	N/A	N/A	N/A	符合 Conformity
131	N.D.	N.D.	N.D.	N.D.	N.D.	N.D.	N.D.*	N.D.*	N.D.*	N.D.*	符合 Conformity
132	N.D.	N.D.	N.D.	N.D.	N.D.	N.D.	N.D.*	N.D.*	N.D.*	N.D.*	符合 Conformity
133	N.D.	N.D.	N.D.	N.D.	N.D.	N.D.	N.D.*	N.D.*	N.D.*	N.D.*	符合 Conformity
134	N.D.	N.D.	N.D.	N.D.	N/A	N/A	N/A	N/A	N/A	N/A	符合 Conformity
135	N.D.	N.D.	N.D.	N.D.	N.D.*	N.D.*	N.D.*	N.D.*	N.D.*	N.D.*	符合 Conformity
136	N.D.	N.D.	N.D.	N.D.	N/A	N/A	N/A	N/A	N/A	N/A	符合 Conformity
137	N.D.	N.D.	N.D.	N.D.*	N/A	N/A	N/A	N/A	N/A	N/A	符合 Conformity
138	N.D.	N.D.	N.D.	N.D.	N.D.	N.D.	N.D.*	N.D.*	N.D.*	N.D.*	符合 Conformity
139	N.D.	N.D.	N.D.	N.D.	N.D.	N.D.	N.D.*	N.D.*	N.D.*	N.D.*	符合 Conformity
140	N.D.	N.D.	N.D.	N.D.*	N/A	N/A	N/A	N/A	N/A	N/A	符合 Conformity
141	N.D.	N.D.	N.D.	N.D.	N/A	N/A	N/A	N/A	N/A	N/A	符合 Conformity
142	N.D.	N.D.	N.D.	N.D.	N.D.*	N.D.*	N.D.*	N.D.*	N.D.*	N.D.*	符合 Conformity
143	N.D.	N.D.	N.D.	N.D.*	N/A	N/A	N/A	N/A	N/A	N/A	符合 Conformity
144	N.D.	N.D.	N.D.	N.D.	N/A	N/A	N/A	N/A	N/A	N/A	符合 Conformity
145	N.D.	N.D.	N.D.	N.D.	N.D.	N.D.	N.D.*	N.D.*	N.D.*	N.D.*	符合 Conformity
146	N.D.	N.D.	N.D.	N.D.	N.D.	N.D.	N.D.*	N.D.*	N.D.*	N.D.*	符合 Conformity
147	N.D.	N.D.	N.D.	N.D.	N.D.	N.D.	N.D.*	N.D.*	N.D.*	N.D.*	符合 Conformity
148	N.D.	N.D.	N.D.	N.D.	N/A	N/A	N/A	N/A	N/A	N/A	符合 Conformity
149	N.D.	N.D.	N.D.	N.D.	N.D.	N.D.	N.D.*	N.D.*	N.D.*	N.D.*	符合 Conformity
150	N.D.	N.D.	N.D.	N.D.	N.D.	N.D.	N.D.*	N.D.*	N.D.*	N.D.*	符合 Conformity
151	N.D.	N.D.	N.D.	N.D.	N.D.	N.D.	N.D.*	N.D.*	N.D.*	N.D.*	符合 Conformity

Any report having not been signed by authorized approver, or having been altered without authorization, or having not been stamped by the "Dedicated Testing/Inspection Stamp" is deemed to be invalid. Copying or excerpting portion of, or altering the content of the report is not permitted without the written authorization of AGC. The test results presented in the report apply only to the tested sample. Any objections to report issued by AGC should be submitted to AGC within 15days after the issuance of the test report. Further enquiry of validity or verification of the test report should be addressed to AGC by agc@agc-cert.com.



测试点 Test point	测试结果 Test result (mg/kg)										结论 Conclusion
	Pb	Cd	Hg	Cr <sup>6+</sup>	PBBs	PBDEs	DIBP	DBP	BBP	DEHP	
152	N.D.	N.D.	N.D.	N.D.	N.D.	N.D.	N.D.*	N.D.*	N.D.*	N.D.*	符合 Conformity
153	N.D.	N.D.	N.D.	N.D.	N.D.	N.D.	N.D.*	N.D.*	N.D.*	N.D.*	符合 Conformity
154	N.D.	N.D.	N.D.	N.D.	N.D.	N.D.	N.D.*	N.D.*	N.D.*	N.D.*	符合 Conformity
155	N.D.	N.D.	N.D.	N.D.	N.D.	N.D.	N.D.*	N.D.*	N.D.*	N.D.*	符合 Conformity
156	N.D.	N.D.	N.D.	N.D.	N.D.	N.D.	N.D.*	N.D.*	N.D.*	N.D.*	符合 Conformity
157	N.D.	N.D.	N.D.	N.D.*	N/A	N/A	N/A	N/A	N/A	N/A	符合 Conformity
158	N.D.	N.D.	N.D.	N.D.	N.D.	N.D.	N.D.*	N.D.*	N.D.*	N.D.*	符合 Conformity

**注释 Note:**

mg/kg =毫克每千克 (milligram per kilogram)

µg/cm<sup>2</sup> =微克每平方厘米 (microgram per square centimeter)

N.D.= 未检出 (小于方法检出限) (Not Detected (less than method detection limit))

N/A=不适用 (Not applicable)

MDL =方法检出限 Method Detection Limit

**豁免项目 Exemption**

测试点 Test point	豁免条款 Exemption clause	内容 Content
68	6(a)	铅作为一种合金元素, 在用于加工的钢和镀锌钢中铅含量不超过 0.35 (wt)。 Lead as an alloying element in steel for machining purposes and in galvanised steel containing up to 0.35 % lead by weight.
66,85	6(c)	铜合金中的铅含量不应该超过 4% Copper alloy containing up to 4% lead by weight
21,106	15	在集成电路倒装芯片封装中, 用于完成半导体芯片和载体之间可行的电气连接的焊料中的铅 Lead in solders to complete a viable electrical connection between semiconductor die and carrier within integrated circuit flip chip packages

Any report having not been signed by authorized approver, or having been altered without authorization, or having not been stamped by the "Dedicated Testing/Inspection Stamp" is deemed to be invalid. Copying or excerpting portion of, or altering the content of the report is not permitted without the written authorization of AGC. The test results presented in the report apply only to the tested sample. Any objections to report issued by AGC should be submitted to AGC within 15days after the issuance of the test report. Further enquiry of validity or verification of the test report should be addressed to AGC by agc@agc-cert.com.

Attestation of Global Compliance(Shenzhen)Co., Ltd

Attestation of Global Compliance(Shenzhen)Std & Tech Co., Ltd

Tel: +86-755 2523 4088 E-mail: agc@agc-cert.com Web: http://cn.agc-cert.com/





**备注 Remark:**

- \*表示报告结果采用湿化学法。其他的则由X射线荧光。对于X射线荧光筛选，Cr VI的结果报告为总铬，而多溴联苯和多溴二苯醚报告为总溴。此外，XRF扫描结果可能基于各种因素与实际含量有所不同，包括但不限于样品尺寸、厚度、面积、不均匀性成分，表面平整度。

\*denotes as reported result(s) was (were) performed by wet chemistry method. Others were screened by XRF. For XRF screening, the result(s) of Cr VI was (were) reported as total chromium and the result(s) of PBBs and PBDEs was (were) reported as total bromine. Also, the XRF result(s) may be different to the actual content based on various factors including, but not limit to, sample size, thickness, area, nonuniformity composition, surface flatness.

- XRF 扫描报告仅供参考，申请者必须自己确认本 XRF 扫描报告所提供的信息能满足/他/她的用途。

基于不同的因素，本 XRF 扫描报告显示结果有所不同，包括但不限于样品的尺寸、厚度、面积、表面光滑度、设备参数和基体效应(例如塑胶、橡胶、金属、玻璃、陶瓷等等)。为获得数据资料，要求有相关化学分析设备作进一步湿化学预处理。

This XRF Scanning report is for reference purposes only. The applicant shall make its/his/her own judgment as to whether the information provided in this XRF screening report is sufficient for its/his/her purposes.

The result shown in this XRF scanning report will differ based on various factors, including but not limited to, the sample size, thickness, area, surface flatness, equipment parameters and matrix effect (e.g. plastic, rubber, metal, glass, ceramic etc.). Further wet chemical pre-treatment with relevant chemical equipment analysis are required to obtain quantitative data.

- Boiling-water-extraction 沸水提取：（X represents the results of the tested sample / X 为待测样品结果）

Number 序号	Colorimetric result (Cr(VI) concentration) 比色结果(铬(VI)浓度)	Judgement 判定
1	$X < 0.1 \mu\text{g}/\text{cm}^2$	Negative 阴性
2	$0.1 \mu\text{g}/\text{cm}^2 \leq X \leq 0.13 \mu\text{g}/\text{cm}^2$	Uncertainty 不确定
3	$X > 0.13 \mu\text{g}/\text{cm}^2$	Positive 阳性

- Negative indicates the absence of Cr(VI) on the tested areas concentration is below the limit of quantification. The coating is considered a non-Cr(VI) based coating. 阴性表明测试区域内六价铬含量低于定量极限，认定镀层不存在六价铬；

Uncertainty indicates the absence of Cr(VI) on the tested areas unavoidable coating variations may influence the determination. 不确定表明测试区域镀层六价铬的不可避免的变化影响结果判定，导致无法判定结果；

Positive indicates the presence of Cr(VI) on the tested areas concentration is above the limit of quantification and the statistical margin of error. The sample coating is considered to contain Cr(VI). 阳性表明测试区域内六价铬含量高于于定量极限，认定镀层含有六价铬；

Storage conditions and production date of the tested sample are unavailable and thus result of Cr(VI) represent status of the sample at the time of testing. 由于未获知样品的存储条件和生产日期、样品的六价铬测试结果仅代表测试时样品的状态。

Any report having not been signed by authorized approver, or having been altered without authorization, or having not been stamped by the "Dedicated Testing/Inspection Stamp" is deemed to be invalid. Copying or excerpting portion of, or altering the content of the report is not permitted without the written authorization of AGC. The test results presented in the report apply only to the tested sample. Any objections to report issued by AGC should be submitted to AGC within 15 days after the issuance of the test report. Further enquiry of validity or verification of the test report should be addressed to AGC by agc@agc-cert.com.



## 附件 Appendix:

测试项目 Test Item	测试方法/仪器 Test Method/ Instrument	方法检出限 MDL	最大限值 Maximum Limit
<b>X 射线荧光光谱法 X-ray Fluorescence Spectrometry (XRF)</b>			
铅 Lead (Pb)	IEC 62321-3-1:2013 / XRF	200mg/kg	1000mg/kg
镉 Cadmium (Cd)		50mg/kg	100mg/kg
汞 Mercury (Hg)		200mg/kg	1000mg/kg
总铬 Total Chromium		200mg/kg	/
总溴 Total Bromine		200mg/kg	/
<b>湿化学法 Wet Chemistry Method</b>			
铅 Lead (Pb)	IEC 62321-5:2013/ ICP-OES	10mg/kg	1000mg/kg
镉 Cadmium (Cd)	IEC 62321-5:2013/ ICP-OES	10mg/kg	100mg/kg
汞 Mercury (Hg)	IEC 62321-4: 2013+A1:2017/ ICP-OES	10mg/kg	1000mg/kg
非金属: 六价铬 (Cr <sup>6+</sup> ) Non-metal Hexavalent Chromium (Cr <sup>6+</sup> )	IEC 62321-7-2:2017/ UV-Vis	8mg/kg	1000mg/kg
金属: 六价铬 (Cr <sup>6+</sup> ) Metal Hexavalent Chromium (Cr <sup>6+</sup> )	IEC 62321-7-1:2015/ UV-Vis	0.1µg/cm <sup>2</sup>	/
多溴联苯(PBBs) Polybrominated Biphenyls (PBBs) - 一溴联苯(MonoBB) -Monobromobiphenyl (MonoBB) - 二溴联苯(DiBB) -Dibromobiphenyl (DiBB) - 三溴联苯(TriBB) -Tribromobiphenyl (TriBB) - 四溴联苯(TetraBB) -Tetrabromobiphenyl (TetraBB) - 五溴联苯(PentaBB) -Pentabromobiphenyl (PentaBB) - 六溴联苯(HexaBB) -Hexabromobiphenyl (HexaBB) - 七溴联苯(HeptaBB) -Heptabromobiphenyl (HeptaBB) - 八溴联苯(OctaBB) -Octabromobiphenyl (OctaBB) - 九溴联苯(NonaBB) -Nonabromodiphenyl (NonaBB) - 十溴联苯(DecaBB) -Decabromodiphenyl (DecaBB)	IEC 62321-6:2015/ GC-MS	单项 Single 5mg/kg	总和 Sum 1000mg/kg

Any report having not been signed by authorized approver, or having been altered without authorization, or having not been stamped by the "Dedicated Testing/Inspection Stamp" is deemed to be invalid. Copying or excerpting portion of, or altering the content of the report is not permitted without the written authorization of AGC. The test results presented in the report apply only to the tested sample. Any objections to report issued by AGC should be submitted to AGC within 15days after the issuance of the test report. Further enquiry of validity or verification of the test report should be addressed to AGC by agc@agc-cert.com.



测试项目 Test Item	测试方法/仪器 Test Method/ Instrument	方法检出限 MDL	最大限值 Maximum Limit
多溴二苯醚 (PBDEs) Polybrominated Diphenylethers (PBDEs) - 一溴二苯醚(MonoBDE) -Monobromodiphenyl ether (MonoBDE) - 二溴二苯醚(DiBDE) -Dibromodiphenyl ether (DiBDE) - 三溴二苯醚(TriBDE) -Tribromodiphenyl ether (TriBDE) - 四溴二苯醚(TetraBDE) -Tetrabromodiphenyl ether (TetraBDE) - 五溴二苯醚(PentaBDE) -Pentabromodiphenyl ether (PentaBDE) - 六溴二苯醚(HexaBDE) -Hexabromodiphenyl ether (HexaBDE) - 七溴二苯醚(HeptaBDE) -Heptabromodiphenyl ether (HeptaBDE) - 八溴二苯醚(OctaBDE) -Octabromodiphenyl ether (OctaBDE) - 九溴二苯醚(NonaBDE) -Nonabromodiphenyl ether (NonaBDE) - 十溴二苯醚(DecaBDE) -Decabromodiphenyl ether (DecaBDE)	IEC 62321-6:2015/ GC-MS	单项 Single 5mg/kg	总和 Sum 1000mg/kg
邻苯二甲酸二异丁酯(DIBP) Di-iso-butyl phthalate (DIBP)	IEC 62321-8:2017/ GC-MS	50mg/kg	1000mg/kg
邻苯二甲酸二正丁酯(DBP) Dibutyl phthalate (DBP)		50mg/kg	1000mg/kg
邻苯二甲酸丁苄酯(BBP) Butylbenzyl phthalate (BBP)		50mg/kg	1000mg/kg
邻苯二甲酸二(2-乙基己基)酯(DEHP) Di-(2-ethylhexyl) Phthalate (DEHP)		50mg/kg	1000mg/kg

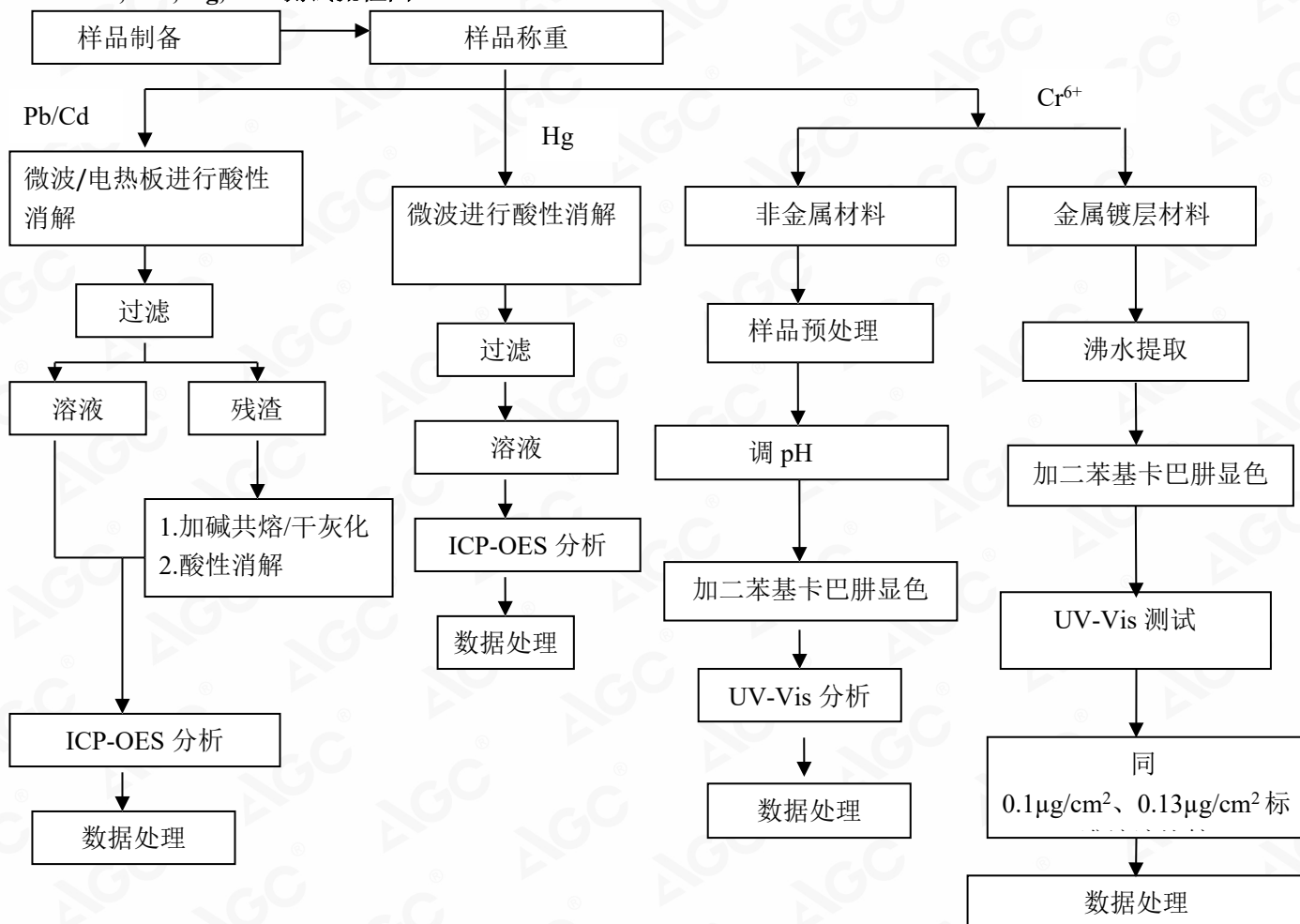
Any report having not been signed by authorized approver, or having been altered without authorization, or having not been stamped by the "Dedicated Testing/Inspection Stamp" is deemed to be invalid. Copying or excerpting portion of, or altering the content of the report is not permitted without the written authorization of AGC. The test results presented in the report apply only to the tested sample. Any objections to report issued by AGC should be submitted to AGC within 15 days after the issuance of the test report. Further enquiry of validity or verification of the test report should be addressed to AGC by agc@agc-cert.com.





### 测试流程图(Test Flow Chart)

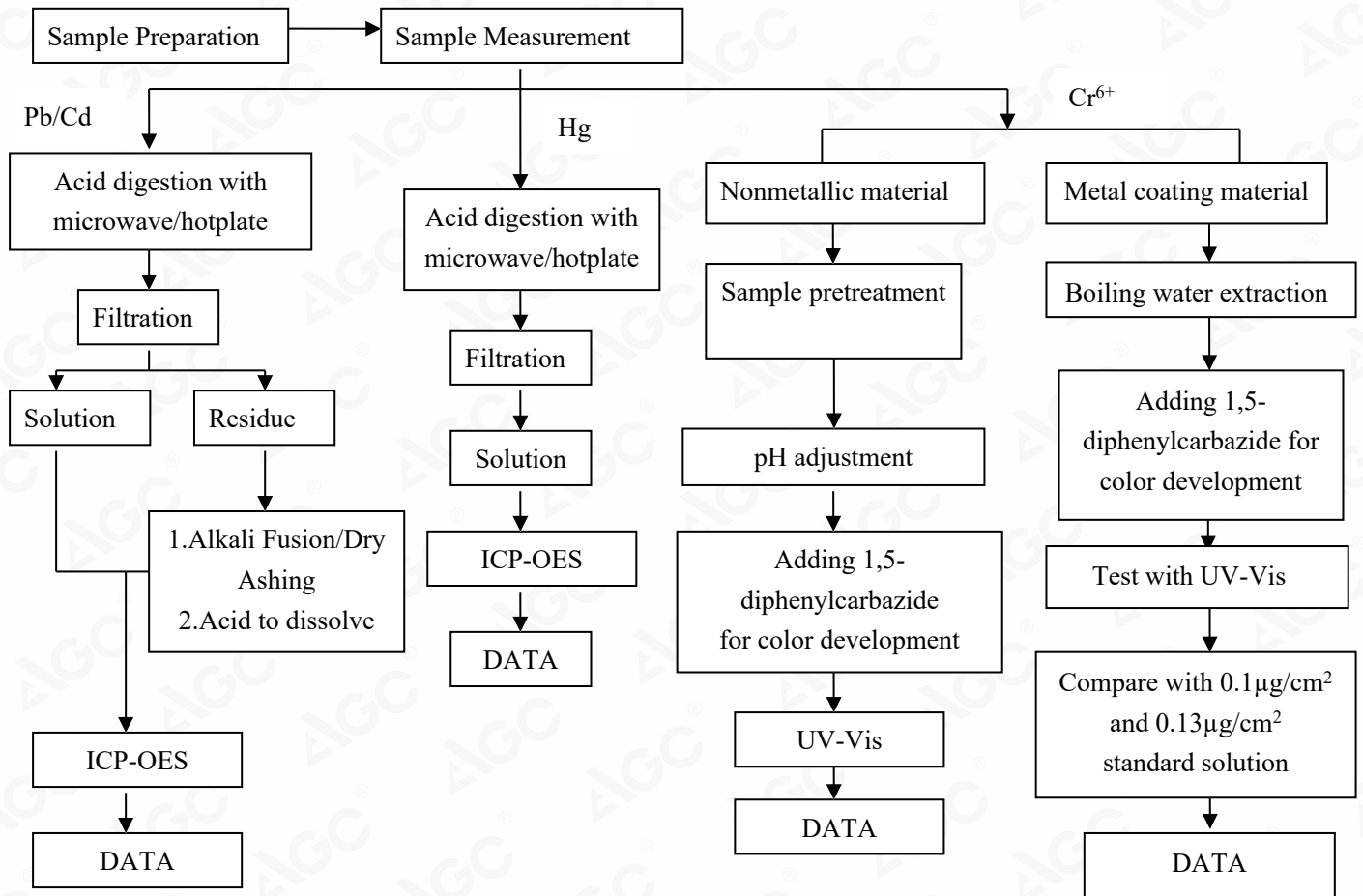
#### 1.Pb, Cd, Hg, Cr<sup>6+</sup>测试流程图



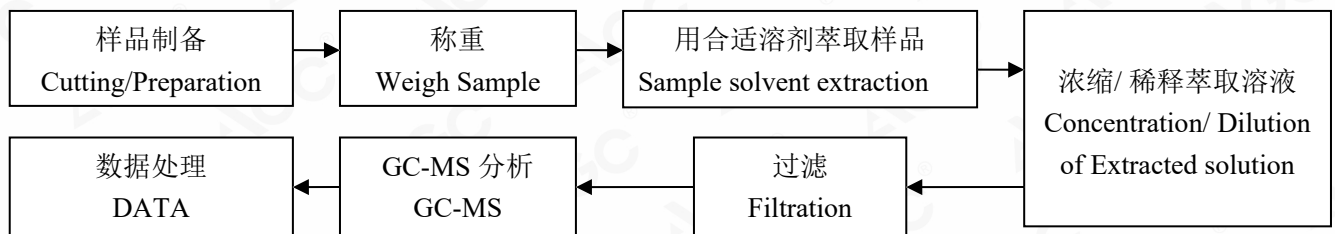
根据以上的流程图之条件，样品已经完全溶解（六价铬测试方法除外）。

Any report having not been signed by authorized approver, or having been altered without authorization, or having not been stamped by the "Dedicated Testing/Inspection Stamp" is deemed to be invalid. Copying or excerpting portion of, or altering the content of the report is not permitted without the written authorization of AGC. The test results presented in the report apply only to the tested sample. Any objections to report issued by AGC should be submitted to AGC within 15days after the issuance of the test report. Further enquiry of validity or verification of the test report should be addressed to AGC by agc@agc-cert.com.



**1.For Pb , Cd , Hg, Cr<sup>6+</sup>**


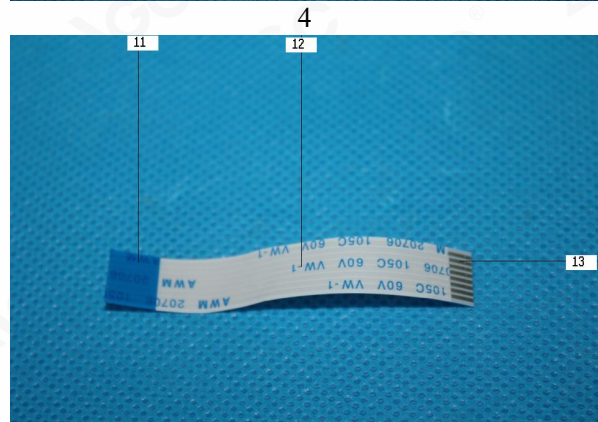
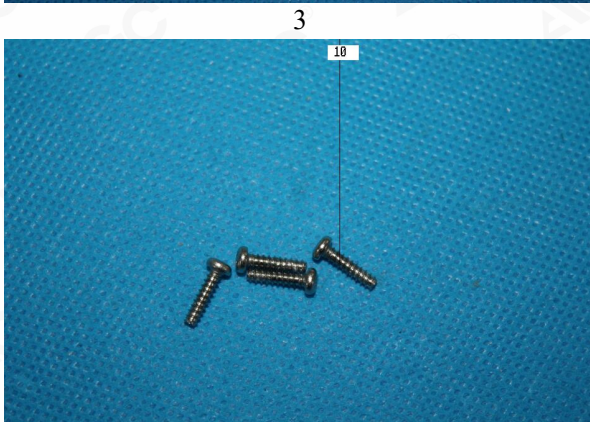
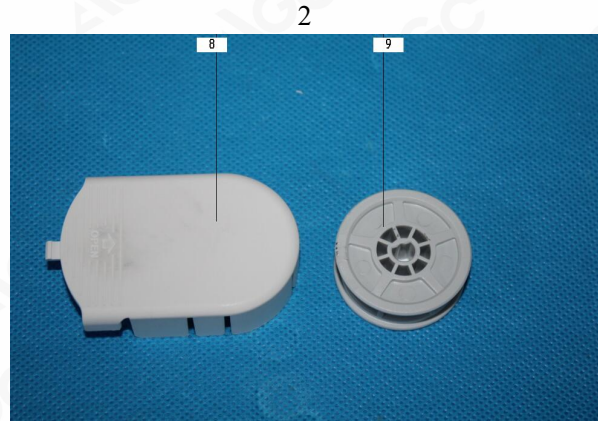
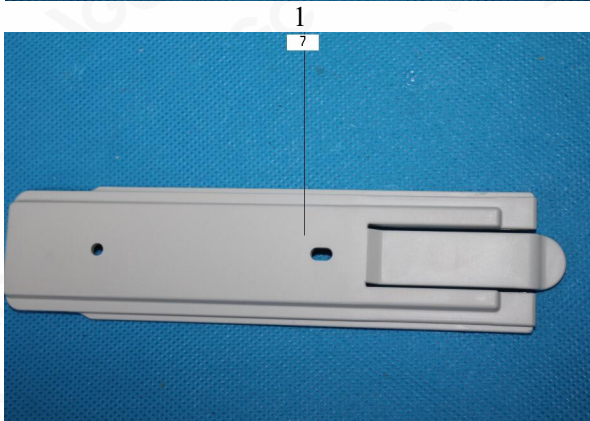
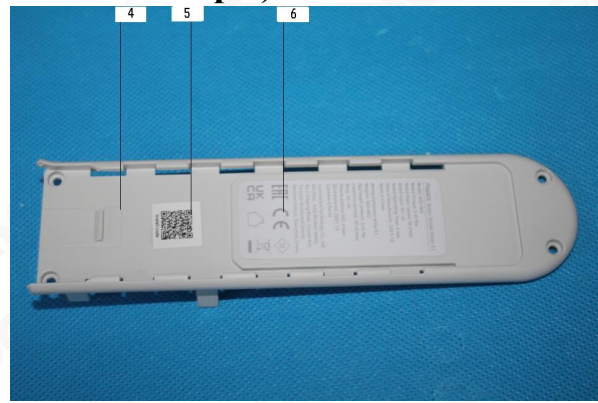
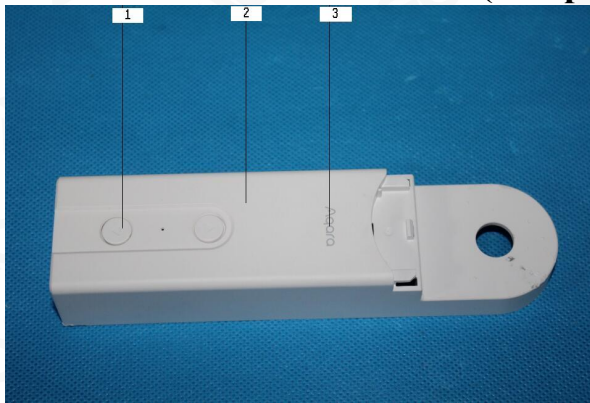
These sample were dissolved totally by pre-conditioning method according to above flow chart (Cr<sup>6+</sup> test method excluded)

**2. PBBs, PBDEs, DBP, BBP, DEHP 和DIBP的测试流程图(The Test Flow Chart of PBBs, PBDEs, DBP, BBP, DEHP and DIBP)**


Any report having not been signed by authorized approver, or having been altered without authorization, or having not been stamped by the "Dedicated Testing/Inspection Stamp" is deemed to be invalid. Copying or excerpting portion of, or altering the content of the report is not permitted without the written authorization of AGC. The test results presented in the report apply only to the tested sample. Any objections to report issued by AGC should be submitted to AGC within 15days after the issuance of the test report. Further enquiry of validity or verification of the test report should be addressed to AGC by agc@agc-cert.com.



样品附图(The photo of the sample)



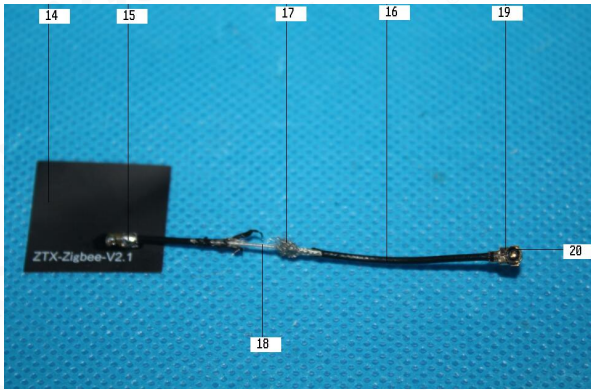
5

6

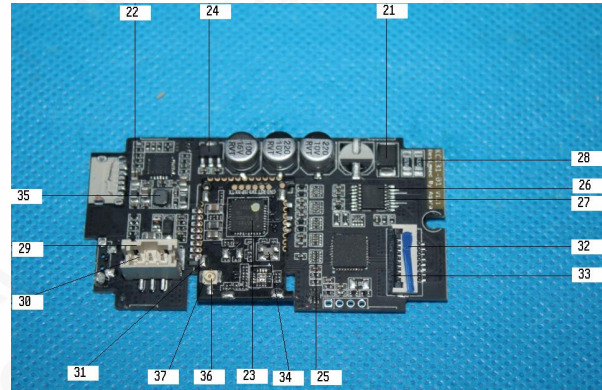
Any report having not been signed by authorized approver, or having been altered without authorization, or having not been stamped by the "Dedicated Testing/Inspection Stamp" is deemed to be invalid. Copying or excerpting portion of, or altering the content of the report is not permitted without the written authorization of AGC. The test results presented in the report apply only to the tested sample. Any objections to report issued by AGC should be submitted to AGC within 15days after the issuance of the test report. Further enquiry of validity or verification of the test report should be addressed to AGC by agc@agc-cert.com.



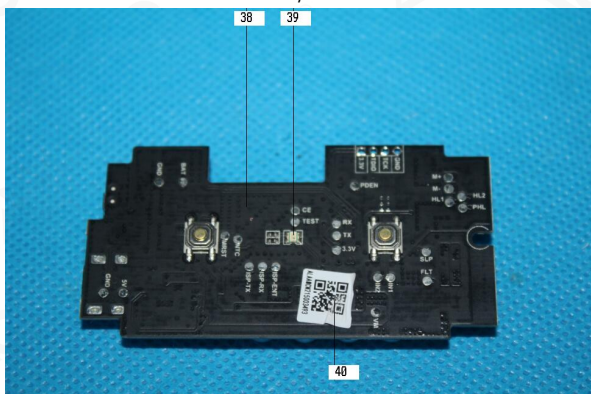




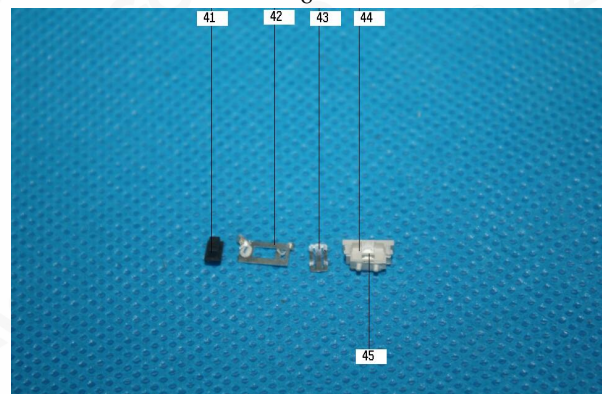
7



8



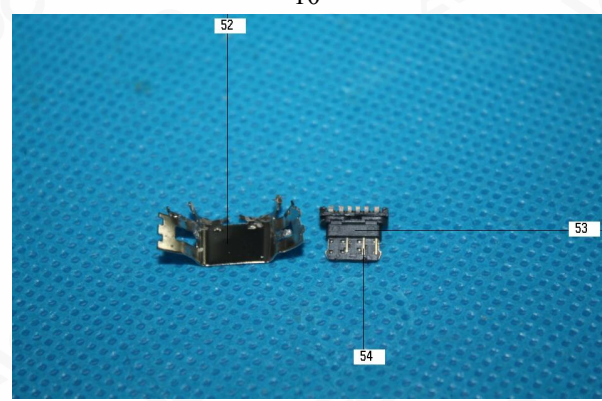
9



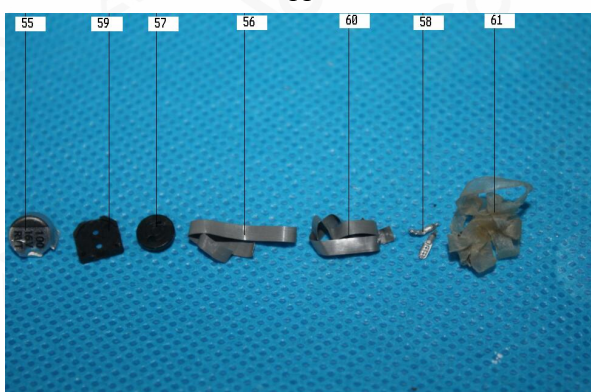
10



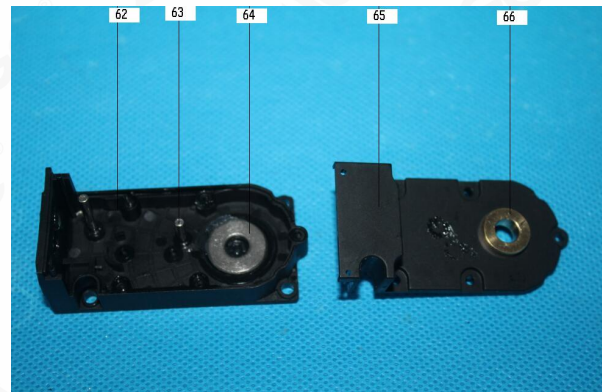
11



12



13



14

Any report having not been signed by authorized approver, or having been altered without authorization, or having not been stamped by the "Dedicated Testing/Inspection Stamp" is deemed to be invalid. Copying or excerpting portion of, or altering the content of the report is not permitted without the written authorization of AGC. The test results presented in the report apply only to the tested sample. Any objections to report issued by AGC should be submitted to AGC within 15days after the issuance of the test report. Further enquiry of validity or verification of the test report should be addressed to AGC by agc@agc-cert.com.

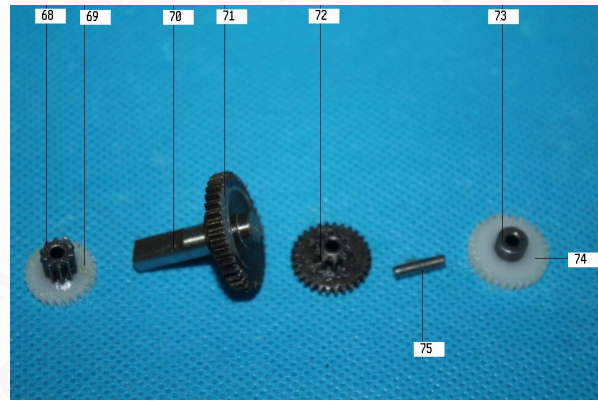
Attestation of Global Compliance(Shenzhen)Co., Ltd  
 Attestation of Global Compliance(Shenzhen)Std & Tech Co., Ltd  
 Tel: +86-755 2523 4088 E-mail: agc@agc-cert.com Web: http://cn.agc-cert.com/



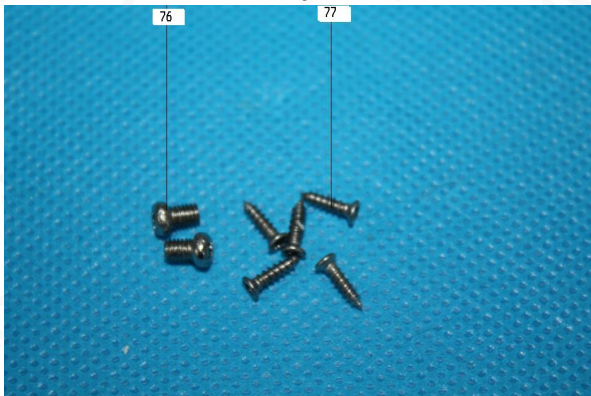




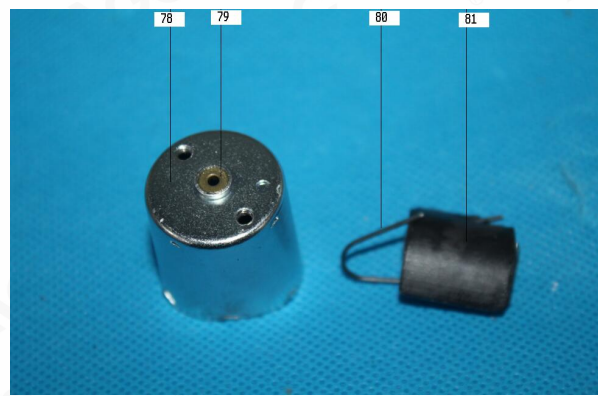
15



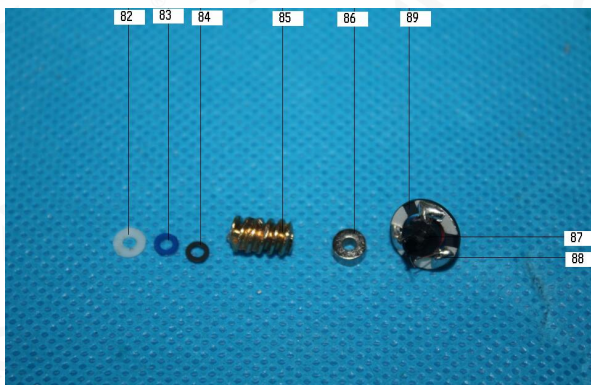
16



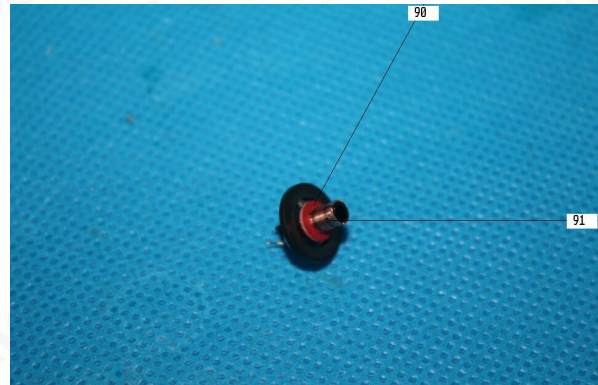
17



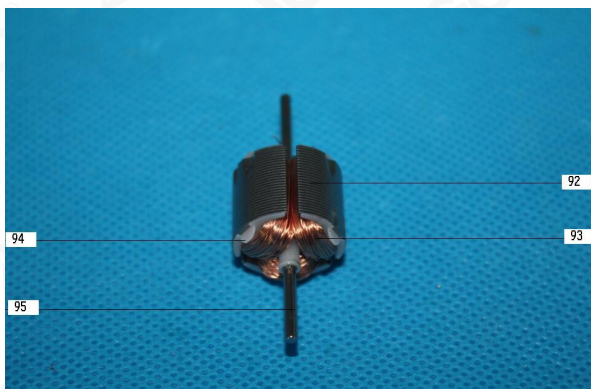
18



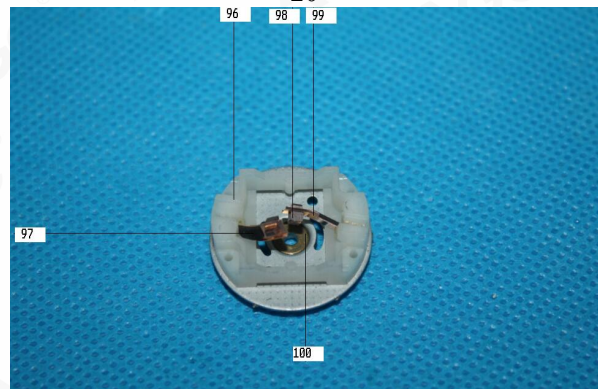
19



20



21

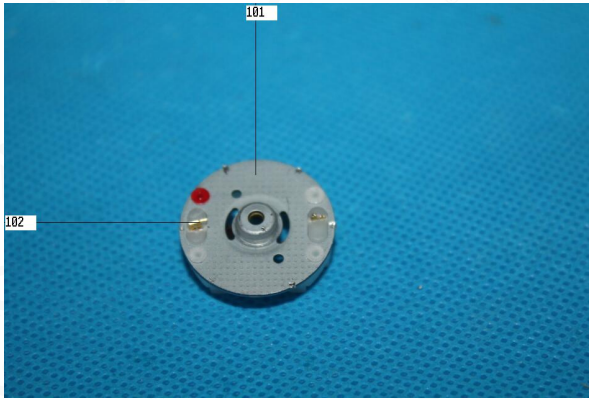


22

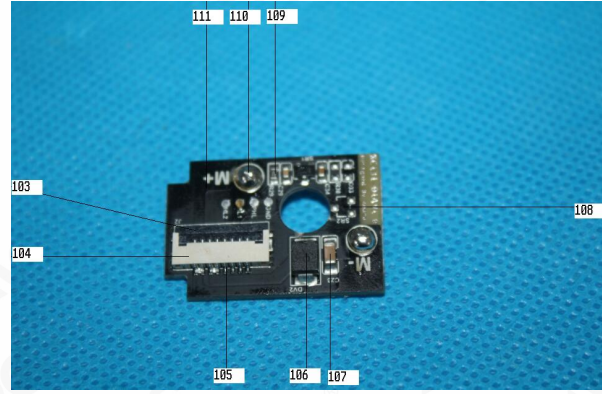
Any report having not been signed by authorized approver, or having been altered without authorization, or having not been stamped by the "Dedicated Testing/Inspection Stamp" is deemed to be invalid. Copying or excerpting portion of, or altering the content of the report is not permitted without the written authorization of AGC. The test results presented in the report apply only to the tested sample. Any objections to report issued by AGC should be submitted to AGC within 15days after the issuance of the test report. Further enquiry of validity or verification of the test report should be addressed to AGC by agc@agc-cert.com.



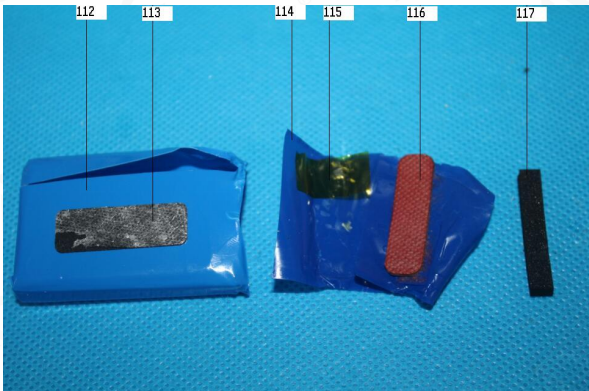




23



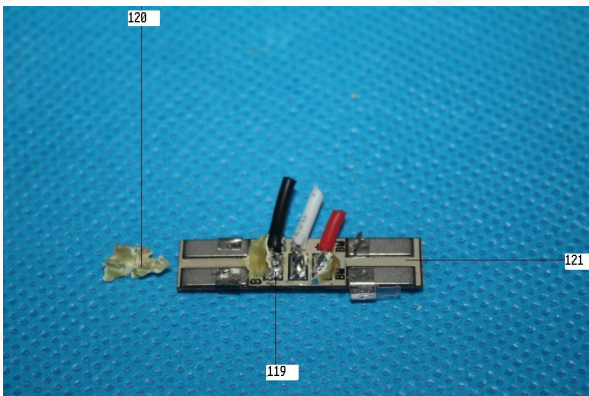
24



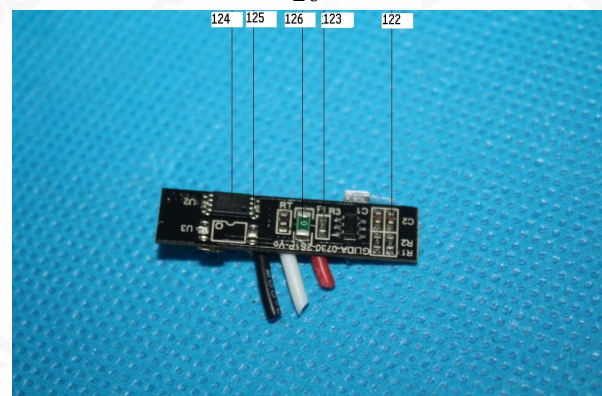
25



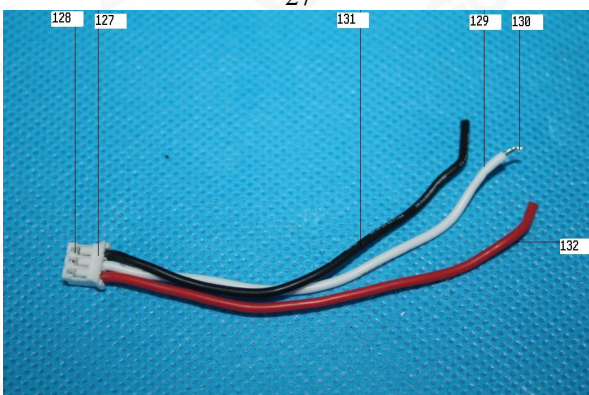
26



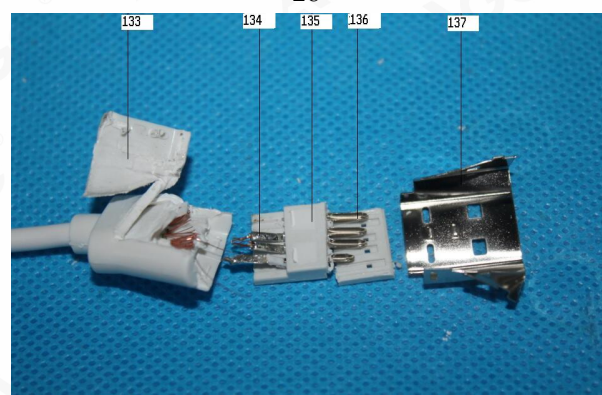
27



28



29

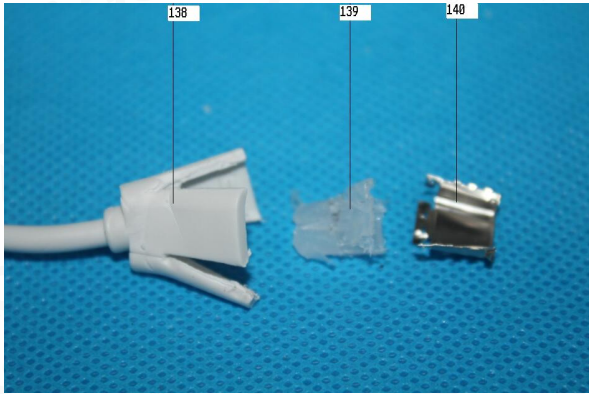


30

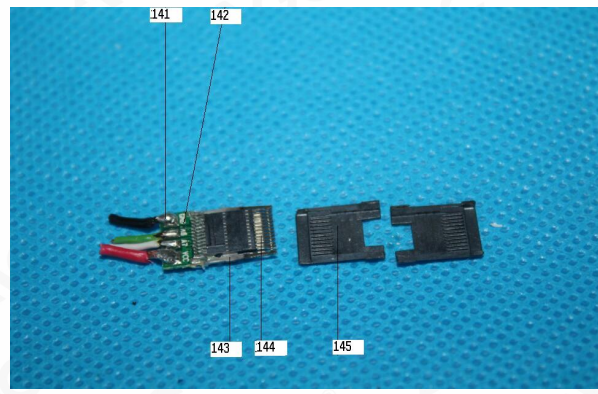
Any report having not been signed by authorized approver, or having been altered without authorization, or having not been stamped by the "Dedicated Testing/Inspection Stamp" is deemed to be invalid. Copying or excerpting portion of, or altering the content of the report is not permitted without the written authorization of AGC. The test results presented in the report apply only to the tested sample. Any objections to report issued by AGC should be submitted to AGC within 15days after the issuance of the test report. Further enquiry of validity or verification of the test report should be addressed to AGC by agc@agc-cert.com.



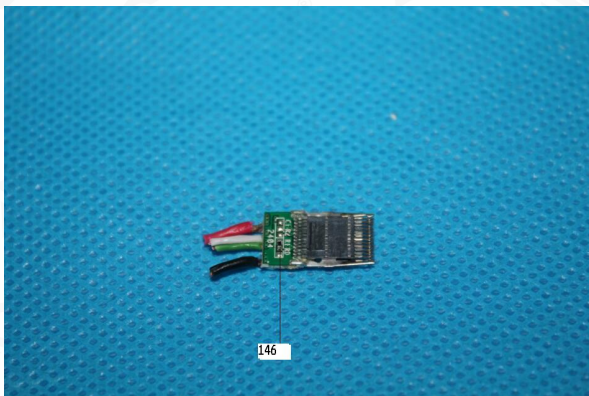




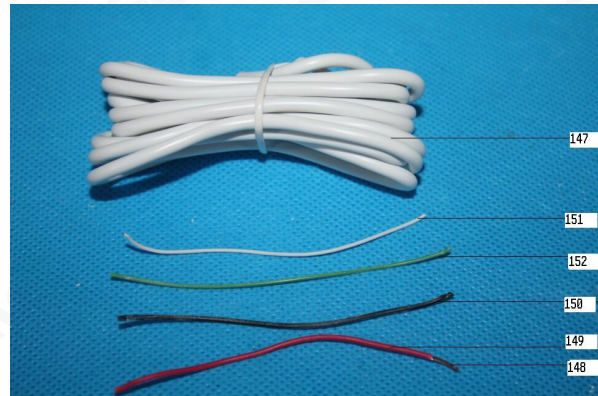
31



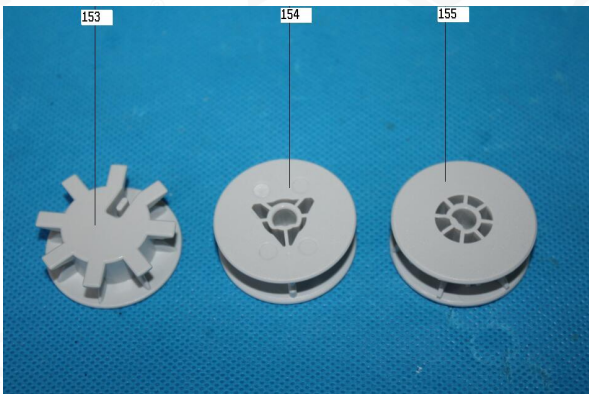
32



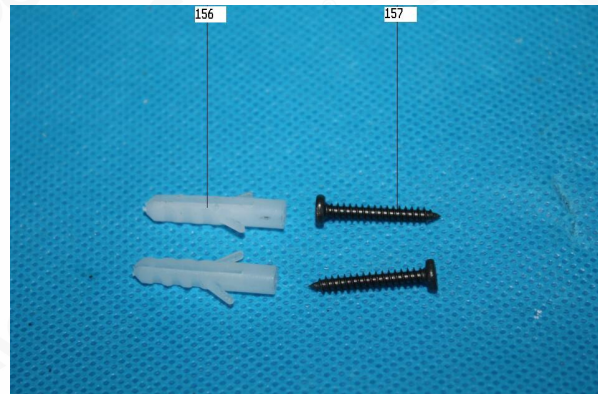
33



34



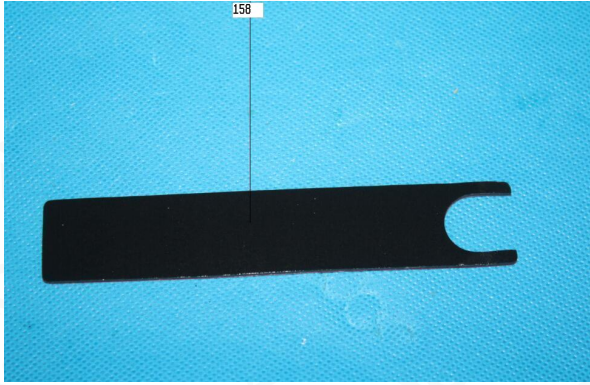
35



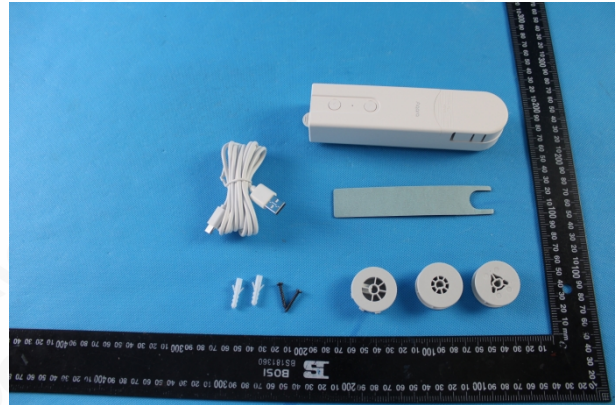
36

Any report having not been signed by authorized approver, or having been altered without authorization, or having not been stamped by the "Dedicated Testing/Inspection Stamp" is deemed to be invalid. Copying or excerpting portion of, or altering the content of the report is not permitted without the written authorization of AGC. The test results presented in the report apply only to the tested sample. Any objections to report issued by AGC should be submitted to AGC within 15days after the issuance of the test report. Further enquiry of validity or verification of the test report should be addressed to AGC by agc@agc-cert.com.





37



**AGC00925211201-002**

此图片仅限于随 AGC 正本报告使用  
AGC authenticate the photo only on original report  
\*\*\*报告结束\*\*\*  
\*\*\* End of Report \*\*\*

Any report having not been signed by authorized approver, or having been altered without authorization, or having not been stamped by the "Dedicated Testing/Inspection Stamp" is deemed to be invalid. Copying or excerpting portion of, or altering the content of the report is not permitted without the written authorization of AGC. The test results presented in the report apply only to the tested sample. Any objections to report issued by AGC should be submitted to AGC within 15days after the issuance of the test report. Further enquiry of validity or verification of the test report should be addressed to AGC by agc@agc-cert.com.

Attestation of Global Compliance(Shenzhen)Co., Ltd  
Attestation of Global Compliance(Shenzhen)Std & Tech Co., Ltd  
Tel: +86-755 2523 4088 E-mail: agc@agc-cert.com Web: http://cn.agc-cert.com/







## 签发测试报告条款 Conditions of Issuance of Test Reports

1. 深圳市鑫宇环标准技术有限公司(以下简称[本公司])为提供符合下述条款的测试和报告, 而接受有关样品和货品。本公司基于下述条款提供服务, 下述条款为本公司与申请服务的个人, 企业或公司(以下简称[客户])的协议。All samples and goods are accepted by the Attestation of Global Compliance (Shenzhen) Std & Tech Co., Ltd. (the "Company") solely for testing and reporting in accordance with the following terms and conditions. The company provides its services on the basis that such terms and conditions constitute express agreement between the company and any person, firm or company requesting its services (the "Clients").
2. 由此测试申请所发出的任何报告(以下简称[报告]), 本公司会严格为客户保密。未经本公司的书面同意, 报告的整体或部分不得复制, 也不得用于广告或授权的其他用途。然而, 客户可以将本公司印制的报告或认可的副本, 向其客户、供货商或直接相关的其他人出示或提交。除非相关政府部门、法律或法规要求, 否则未经客户同意, 本公司不得将报告内容向任何第三方讨论或披露。Any report issued by Company as a result of this application for testing services (the "Report") shall be issued in confidence to the Clients and the Report will be strictly treated as such by the Company. It may not be reproduced either in its entirety or in part and it may not be used for advertising or other unauthorized purposes without the written consent of the Company. The Clients to whom the Report is issued may, however, show or send it, or a certified copy thereof prepared by the Company to its customer, supplier or other persons directly concerned. The Company will not, without the consent of the Clients, enter into any discussion or correspondence with any third party concerning the contents of the Report, unless required by the relevant governmental authorities, laws or court orders.
3. 除非相关政府部门、法律或法院要求, 否则未经公司预先书面同意, 本公司毋需也无义务到法院对有关报告作证。The Company shall not be called or be liable to be called to give evidence or testimony on the Report in a court of law without its prior written consent, unless required by the relevant governmental authorities, laws or court orders.
4. 如果本公司确定报告被不当地使用, 本公司保留撤回报告的权利, 并有权要求其它适当的额外赔偿。In the event of the improper use of the report as determined by the Company, the Company reserves the right to withdraw it, and to adopt any other additional remedies which may be appropriate.
5. 本公司接受样品进行测试的前提是, 该测试报告不能作为针对本公司法律行动的依据。Samples submitted for testing are accepted on the understanding that the Report issued cannot form the basis of, or be the instrument for, any legal action against the Company.
6. 如因使用本公司任何报告内的资料, 或任何传播信息所描述与之有关的测试或研究导致的任何损失或损害, 本公司概不负责。The Company will not be liable for or accept responsibility for any loss or damage however arising from the use of information contained in any of its Reports or in any communication whatsoever about its said tests or investigations.
7. 若需要在法院审理程序或仲裁过程中使用测试报告, 客户必须在提交测试样品前将该意图告知本公司。Clients wishing to use the Report in court proceedings or arbitration shall inform the Company to that effect prior to submitting the sample for testing.

Any report having not been signed by authorized approver, or having been altered without authorization, or having not been stamped by the "Dedicated Testing/Inspection Stamp" is deemed to be invalid. Copying or excerpting portion of, or altering the content of the report is not permitted without the written authorization of AGC. The test results presented in the report apply only to the tested sample. Any objections to report issued by AGC should be submitted to AGC within 15days after the issuance of the test report. Further enquiry of validity or verification of the test report should be addressed to AGC by [agc@agc-cert.com](mailto:agc@agc-cert.com).







8. 电子版报告更改后将不被追回，客户有义务将更改后的报告提供给使用原报告的相关方。The Company is not responsible for recalling the electronic version of the original report when any revision is made to them. The Client assumes the responsibility to providing the revised version to any interested party who uses them.

9. 该测试报告的支持数据和信息本公司保存 6 年。个别评审机构有特别要求的，检测数据和报告的保存期可依情况变动。一旦超过上述提交的保存期限，数据和信息将被处理掉。任何情况下，本公司不必提供任何被处理的过期数据或信息。即使本公司事先被告知可能会发生相关的损害，本公司在任何情况下也不必承担任何损害，包括(但不限于)补偿性赔偿、利润损失、数据遗失、或任何形式的特殊损害、附带损害、间接损害、从属损害或任何违反约定、违反承诺、侵权(包括疏忽)、产品责任或其他原因的惩罚性损害。Subject to the variable length of retention time for test data and report stored hereinto as otherwise specifically required by individual accreditation authorities, the Company will only keep the supporting test data and information of the test report for a period of six years. The data and information will be disposed of after the aforementioned retention period has elapsed. Under no circumstances shall we provide any data and information which has been disposed of after retention period. Under no circumstances shall we be liable for damage of any kind, including (but not limited to) compensatory damages, lost profits, lost data, or any form of special, incidental, indirect, consequential or punitive damages of any kind, whether based on breach of contract of warranty, tort (including negligence), product liability or otherwise, even if we are informed in advance of the possibility of such damages.

Any report having not been signed by authorized approver, or having been altered without authorization, or having not been stamped by the "Dedicated Testing/Inspection Stamp" is deemed to be invalid. Copying or excerpting portion of, or altering the content of the report is not permitted without the written authorization of AGC. The test results presented in the report apply only to the tested sample. Any objections to report issued by AGC should be submitted to AGC within 15 days after the issuance of the test report. Further enquiry of validity or verification of the test report should be addressed to AGC by [agc@agc-cert.com](mailto:agc@agc-cert.com).

Attestation of Global Compliance(Shenzhen)Co., Ltd  
Attestation of Global Compliance(Shenzhen)Std & Tech Co., Ltd  
Tel: +86-755 2523 4088 E-mail: [agc@agc-cert.com](mailto:agc@agc-cert.com) Web: <http://cn.agc-cert.com/>

