

TEST REPORT

CheckCode:807941
Report No.:C202213022047E

Applicant: Lumi United Technology Co., Ltd
Address: Room 801-804, Building 1, Chongwen Park, Nanshan iPark, No. 3370, Liuxian Avenue, Fuguang Community, Taoyuan Residential District, Nanshan District, Shenzhen, China

The following sample information was submitted and identified by/on the behalf of the client

Name: 1. Smart Video Doorbell G4, 2. Chime Repeater
Specifications: 1. SVD-C01, 2. SVD-C02
Customer Reference Doorbell: SVD-C03, Repeater: SVD-C04
Information:
Sample State: Normal

Date of Receipt: Aug.23, 2022 **Test Period:** Aug.23, 2022 – Sep.23, 2022
Sep.19, 2022 Nov. 16, 2022 – Nov. 24, 2022
Nov. 16, 2022
Nov. 22, 2022

Test Request: Short-chain chlorinated paraffins (SCCPs), Hexabromocyclododecane (HBCDD) and all major diastereoisomers identified (α -HBCDD, β -HBCDD, γ -HBCDD)

Test Result: Please refer to following page(s).

Result Summary:

Test Request	Conclusion
European Regulation POPs (EU) 2019/1021–Short-chain chlorinated paraffins (SCCPs)	Comply
European Regulation POPs (EU) 2019/1021–Hexabromocyclododecane (HBCDD) and all major diastereoisomers identified (α -HBCDD, β -HBCDD, γ -HBCDD)	Comply

Edited by Peng Liman Reviewed by Huang Yingkun Approved by Zheng Xinqing



扫一扫 验真伪

Seal of:

GUANGZHOU GRG METROLOGY & TEST CO., LTD.

Issue date:Dec.1,2022

This test report is responsible for the tested samples only. Without permission of the test center this test report is not permitted to be duplicated in extracts. The test report is invalid without the specialized stamp of GUANGZHOU GRG METROLOGY & TEST CO., LTD. The test report is invalid if altered. Objections to the test report must be submitted to GUANGZHOU GRG METROLOGY & TEST CO., LTD. within 15 days.

GUANGZHOU GRG METROLOGY & TEST CO., LTD.

Address: No.31 Nanxiang Second Road, Science City, Huangpu District, Guangzhou, China

Tel: 4006020999 Fax: +86-020-38698685 Website: http://www.grgtest.com

TEST REPORT

CheckCode:807941
Report No.:C202213022047E

Sample description:

Sample No.	Description
1-1	Grey coating
1-2	Black plastic shell
2	Black rubber part
5	Black plastic cover
6	Black glue
7	Black adhesive sponge sheet
9	Black plastic part
16	White plastic cover
17	Pink rubber part
19	White plastic part
20	Black "PCB"
22	Black plastic cover
23	Black plastic part
24	Black rubber part
25	Black "FPC"
27	Black plastic jacket
29	Black plastic part
32	Transparent plastic tube
35	Green "PCB"
37	Black body
38	Brown body
39	Black body
48	Red plastic jacket
49	Black plastic jacket
50	White plastic shell
52	Black plastic part
55	Black adhesive foam ring
56	White plastic sheet
58	Copper-colored enameled wire
59	Transparent plastic sheet
61	Black glue
64	Black plastic part
66	Black body
67	DK-grey body
68	Brown body (small)

GUANGZHOU GRG METROLOGY & TEST CO., LTD.

Address: No.31 Nanxiang Second Road, Science City, Huangpu District, Guangzhou, China
Tel: 4006020999 Fax: +86-020-38698685 Website: <http://www.grgtest.com>

TEST REPORT

CheckCode:807941
Report No.:C202213022047E

Sample No.	Description
69	Brown body (big)
70	Dk-grey body
71	Grey body
72	Dk-brown body
73	Black body
74	Beige plastic shell
77	Black body (3 feet)
78	Black body
81	Black body
84	White "LED"
96	Transparent "LED"
97	Dk-blue "LED"
99	Black body with white printing
100	Black body
101	Lt-brown body
102	Black body
103	Black core
106	Grey material
107	Black plastic part
108	Black & grey ceramic sheet
109	Green "PCB"
110	Black body
111	Grey body
115	Black "PCB"
116	Black body
117	Black plastic shell
119	Black plastic button
122	Black body
123	Black body with white printing
124	Black body
125	Dk-grey body
126	Dk-grey core
127	Lt-brown body
128	White plastic part
132	Dk-grey plastic part
133	Black plastic part
136	Black body

GUANGZHOU GRG METROLOGY & TEST CO., LTD.

Address: No.31 Nanxiang Second Road, Science City, Huangpu District, Guangzhou, China
Tel: 4006020999 Fax: +86-020-38698685 Website: <http://www.grgtest.com>

TEST REPORT

CheckCode:807941
Report No.:C202213022047E

Sample No.	Description
139	Silvery body
141	Black body
142	Black plastic part
144	Brown plastic sheet with white printing
146	Black rubber part
148	Lt-brown paper sheet with liquid
152	Beige plastic shell
155	Black body
156	Black body (8 feet)
157	Silvery body
158	Black body
159	Black body (8 feet)
160	Black body
162	Transparent glass part with black printing
164	Translucent glass part
166	Translucent glass part
168	Black plastic cover
169	Black plastic part
170	Black plastic sheet
171	Multi-colored transparent glass sheet
172	Transparent glass sheet
174	Black plastic part
175	Grey core
177	Copper-colored enameled wire
178	Black plastic part
179	Pink plastic jacket
181	Black plastic shell
182	Black plastic cover
183	White adhesive plastic sheet with black printing
184	White plastic part
185	Black "PCB"
188	Black body
189	Black body (big)
190	Black body (small)
191	Black body
194	Dk-grey plastic part
198	Black plastic part

GUANGZHOU GRG METROLOGY & TEST CO., LTD.

Address: No.31 Nanxiang Second Road, Science City, Huangpu District, Guangzhou, China
Tel: 4006020999 Fax: +86-020-38698685 Website: <http://www.grgtest.com>

TEST REPORT

CheckCode:807941
Report No.:C202213022047E

Sample No.	Description
201	Black plastic part
203	Black body (2 feet)
204	Black body
207	Black adhesive fiber sheet
208	Black paper sheet
209	Black paper part
210	Black glue
211	Yellow glue
212	Beige fiber part
214	Red enameled wire
218	White plastic sheet
224	Black rubber jacket
227	White fiber thread
228	Black rubber part
229	White translucent plastic part
230	White plastic part
233	Black rubber part
234	Dk-grey plastic part
237	Blue "PCB"
239	Dk-grey plastic part
242	White plastic part
244	Black plastic part
246	Black rubber ring
247	Black adhesive foam sheet
248	Black plastic shell
249	Black plastic part
250-1	Black coating
250-2	White plastic cover
251	Black plastic part

- Remark:
- 1) mg/kg = ppm
 - 2) MDL= method detection limit
 - 3) "N.D." = Not Detected (Below Method Detection Limit)
 - 4) Results shown are of the total weight of mixed samples.
 - 5) The performed tests on selected parts of submitted sample(s).
 - 6) As the specimen 29,32,35,56,59,61,106,108,128,133,211,246 were insufficient, the test result(s) was /were based on sample resubmitted by 2022-09-19.

GUANGZHOU GRG METROLOGY & TEST CO., LTD.

Address: No.31 Nanxiang Second Road, Science City, Huangpu District, Guangzhou, China
Tel: 4006020999 Fax: +86-020-38698685 Website: <http://www.grgtest.com>

TEST REPORT

CheckCode:807941
Report No.:C202213022047E

7) Result shown of specimen 250-1 was based on sample resubmitted by 2022-11-22.

Test Result(s):

1. European Regulation POPs (EU) 2019/1021–Short-chain chlorinated paraffins (SCCPs)

Test Method: With reference to EPA 3550C:2007, analysis was performed by GC-ECD/NCI-GC/MS.

Test Item	CAS No.	Sample	Unit	MDL	Limit	Conclusion
		1-1+1-2+2				
Alkanes C ₁₀ –C ₁₃ , chloro (short-chain chlorinated paraffins) (SCCPs)	85535-84-8 and others	N.D.	mg/kg	50	1500	Comply

Test Item	CAS No.	Sample	Unit	MDL	Limit	Conclusion
		5+6+7				
Alkanes C ₁₀ –C ₁₃ , chloro (short-chain chlorinated paraffins) (SCCPs)	85535-84-8 and others	N.D.	mg/kg	50	1500	Comply

Test Item	CAS No.	Sample	Unit	MDL	Limit	Conclusion
		9+16				
Alkanes C ₁₀ –C ₁₃ , chloro (short-chain chlorinated paraffins) (SCCPs)	85535-84-8 and others	N.D.	mg/kg	50	1500	Comply

Test Item	CAS No.	Sample	Unit	MDL	Limit	Conclusion
		17+19				
Alkanes C ₁₀ –C ₁₃ , chloro (short-chain chlorinated paraffins) (SCCPs)	85535-84-8 and others	N.D.	mg/kg	50	1500	Comply

GUANGZHOU GRG METROLOGY & TEST CO., LTD.

Address: No.31 Nanxiang Second Road, Science City, Huangpu District, Guangzhou, China
Tel: 4006020999 Fax: +86-020-38698685 Website: <http://www.grgtest.com>

TEST REPORT

CheckCode:807941
Report No.:C202213022047E

Test Item	CAS No.	Sample	Unit	MDL	Limit	Conclusion
		20+22+23				
Alkanes C ₁₀ -C ₁₃ , chloro (short-chain chlorinated paraffins) (SCCPs)	85535-84-8 and others	N.D.	mg/kg	50	1500	Comply

Test Item	CAS No.	Sample	Unit	MDL	Limit	Conclusion
		24+25+27				
Alkanes C ₁₀ -C ₁₃ , chloro (short-chain chlorinated paraffins) (SCCPs)	85535-84-8 and others	N.D.	mg/kg	50	1500	Comply

Test Item	CAS No.	Sample	Unit	MDL	Limit	Conclusion
		29+32				
Alkanes C ₁₀ -C ₁₃ , chloro (short-chain chlorinated paraffins) (SCCPs)	85535-84-8 and others	N.D.	mg/kg	50	1500	Comply

Test Item	CAS No.	Sample	Unit	MDL	Limit	Conclusion
		35+37+38				
Alkanes C ₁₀ -C ₁₃ , chloro (short-chain chlorinated paraffins) (SCCPs)	85535-84-8 and others	N.D.	mg/kg	50	1500	Comply

Test Item	CAS No.	Sample	Unit	MDL	Limit	Conclusion
		39				
Alkanes C ₁₀ -C ₁₃ , chloro (short-chain chlorinated paraffins) (SCCPs)	85535-84-8 and others	N.D.	mg/kg	50	1500	Comply

GUANGZHOU GRG METROLOGY & TEST CO., LTD.

Address: No.31 Nanxiang Second Road, Science City, Huangpu District, Guangzhou, China
Tel: 4006020999 Fax: +86-020-38698685 Website: <http://www.grgtest.com>

TEST REPORT

CheckCode:807941
Report No.:C202213022047E

Test Item	CAS No.	Sample	Unit	MDL	Limit	Conclusion
		48				
Alkanes C ₁₀ -C ₁₃ , chloro (short-chain chlorinated paraffins) (SCCPs)	85535-84-8 and others	N.D.	mg/kg	50	1500	Comply

Test Item	CAS No.	Sample	Unit	MDL	Limit	Conclusion
		49+50+52				
Alkanes C ₁₀ -C ₁₃ , chloro (short-chain chlorinated paraffins) (SCCPs)	85535-84-8 and others	N.D.	mg/kg	50	1500	Comply

Test Item	CAS No.	Sample	Unit	MDL	Limit	Conclusion
		55+56				
Alkanes C ₁₀ -C ₁₃ , chloro (short-chain chlorinated paraffins) (SCCPs)	85535-84-8 and others	N.D.	mg/kg	50	1500	Comply

Test Item	CAS No.	Sample	Unit	MDL	Limit	Conclusion
		58+59				
Alkanes C ₁₀ -C ₁₃ , chloro (short-chain chlorinated paraffins) (SCCPs)	85535-84-8 and others	N.D.	mg/kg	50	1500	Comply

Test Item	CAS No.	Sample	Unit	MDL	Limit	Conclusion
		64+66				
Alkanes C ₁₀ -C ₁₃ , chloro (short-chain chlorinated paraffins) (SCCPs)	85535-84-8 and others	N.D.	mg/kg	50	1500	Comply

GUANGZHOU GRG METROLOGY & TEST CO., LTD.

Address: No.31 Nanxiang Second Road, Science City, Huangpu District, Guangzhou, China
Tel: 4006020999 Fax: +86-020-38698685 Website: <http://www.grgtest.com>

TEST REPORT

CheckCode:807941
Report No.:C202213022047E

Test Item	CAS No.	Sample	Unit	MDL	Limit	Conclusion
		67+68+69				
Alkanes C ₁₀ -C ₁₃ , chloro (short-chain chlorinated paraffins) (SCCPs)	85535-84-8 and others	N.D.	mg/kg	50	1500	Comply

Test Item	CAS No.	Sample	Unit	MDL	Limit	Conclusion
		70+71+72				
Alkanes C ₁₀ -C ₁₃ , chloro (short-chain chlorinated paraffins) (SCCPs)	85535-84-8 and others	N.D.	mg/kg	50	1500	Comply

Test Item	CAS No.	Sample	Unit	MDL	Limit	Conclusion
		73+74+77				
Alkanes C ₁₀ -C ₁₃ , chloro (short-chain chlorinated paraffins) (SCCPs)	85535-84-8 and others	N.D.	mg/kg	50	1500	Comply

Test Item	CAS No.	Sample	Unit	MDL	Limit	Conclusion
		78+81+84				
Alkanes C ₁₀ -C ₁₃ , chloro (short-chain chlorinated paraffins) (SCCPs)	85535-84-8 and others	N.D.	mg/kg	50	1500	Comply

Test Item	CAS No.	Sample	Unit	MDL	Limit	Conclusion
		96+97+99				
Alkanes C ₁₀ -C ₁₃ , chloro (short-chain chlorinated paraffins) (SCCPs)	85535-84-8 and others	N.D.	mg/kg	50	1500	Comply

GUANGZHOU GRG METROLOGY & TEST CO., LTD.

Address: No.31 Nanxiang Second Road, Science City, Huangpu District, Guangzhou, China
Tel: 4006020999 Fax: +86-020-38698685 Website: <http://www.grgtest.com>

TEST REPORT

CheckCode:807941
Report No.:C202213022047E

Test Item	CAS No.	Sample	Unit	MDL	Limit	Conclusion
		100+101+102				
Alkanes C ₁₀ -C ₁₃ , chloro (short-chain chlorinated paraffins) (SCCPs)	85535-84-8 and others	N.D.	mg/kg	50	1500	Comply

Test Item	CAS No.	Sample	Unit	MDL	Limit	Conclusion
		103+106				
Alkanes C ₁₀ -C ₁₃ , chloro (short-chain chlorinated paraffins) (SCCPs)	85535-84-8 and others	N.D.	mg/kg	50	1500	Comply

Test Item	CAS No.	Sample	Unit	MDL	Limit	Conclusion
		107+108+109				
Alkanes C ₁₀ -C ₁₃ , chloro (short-chain chlorinated paraffins) (SCCPs)	85535-84-8 and others	N.D.	mg/kg	50	1500	Comply

Test Item	CAS No.	Sample	Unit	MDL	Limit	Conclusion
		110+111+115				
Alkanes C ₁₀ -C ₁₃ , chloro (short-chain chlorinated paraffins) (SCCPs)	85535-84-8 and others	N.D.	mg/kg	50	1500	Comply

Test Item	CAS No.	Sample	Unit	MDL	Limit	Conclusion
		116+117+119				
Alkanes C ₁₀ -C ₁₃ , chloro (short-chain chlorinated paraffins) (SCCPs)	85535-84-8 and others	N.D.	mg/kg	50	1500	Comply

GUANGZHOU GRG METROLOGY & TEST CO., LTD.

Address: No.31 Nanxiang Second Road, Science City, Huangpu District, Guangzhou, China
Tel: 4006020999 Fax: +86-020-38698685 Website: <http://www.grgtest.com>

TEST REPORT

CheckCode:807941
Report No.:C202213022047E

Test Item	CAS No.	Sample	Unit	MDL	Limit	Conclusion
		122+123+124				
Alkanes C ₁₀ -C ₁₃ , chloro (short-chain chlorinated paraffins) (SCCPs)	85535-84-8 and others	N.D.	mg/kg	50	1500	Comply

Test Item	CAS No.	Sample	Unit	MDL	Limit	Conclusion
		125+126+127				
Alkanes C ₁₀ -C ₁₃ , chloro (short-chain chlorinated paraffins) (SCCPs)	85535-84-8 and others	N.D.	mg/kg	50	1500	Comply

Test Item	CAS No.	Sample	Unit	MDL	Limit	Conclusion
		132				
Alkanes C ₁₀ -C ₁₃ , chloro (short-chain chlorinated paraffins) (SCCPs)	85535-84-8 and others	N.D.	mg/kg	50	1500	Comply

Test Item	CAS No.	Sample	Unit	MDL	Limit	Conclusion
		136+139				
Alkanes C ₁₀ -C ₁₃ , chloro (short-chain chlorinated paraffins) (SCCPs)	85535-84-8 and others	N.D.	mg/kg	50	1500	Comply

Test Item	CAS No.	Sample	Unit	MDL	Limit	Conclusion
		141+142+144				
Alkanes C ₁₀ -C ₁₃ , chloro (short-chain chlorinated paraffins) (SCCPs)	85535-84-8 and others	N.D.	mg/kg	50	1500	Comply

GUANGZHOU GRG METROLOGY & TEST CO., LTD.

Address: No.31 Nanxiang Second Road, Science City, Huangpu District, Guangzhou, China
Tel: 4006020999 Fax: +86-020-38698685 Website: <http://www.grgtest.com>

TEST REPORT

CheckCode:807941
Report No.:C202213022047E

Test Item	CAS No.	Sample	Unit	MDL	Limit	Conclusion
		146+148+152				
Alkanes C ₁₀ -C ₁₃ , chloro (short-chain chlorinated paraffins) (SCCPs)	85535-84-8 and others	N.D.	mg/kg	50	1500	Comply

Test Item	CAS No.	Sample	Unit	MDL	Limit	Conclusion
		155+156+157				
Alkanes C ₁₀ -C ₁₃ , chloro (short-chain chlorinated paraffins) (SCCPs)	85535-84-8 and others	N.D.	mg/kg	50	1500	Comply

Test Item	CAS No.	Sample	Unit	MDL	Limit	Conclusion
		158+159+160				
Alkanes C ₁₀ -C ₁₃ , chloro (short-chain chlorinated paraffins) (SCCPs)	85535-84-8 and others	N.D.	mg/kg	50	1500	Comply

Test Item	CAS No.	Sample	Unit	MDL	Limit	Conclusion
		162+164				
Alkanes C ₁₀ -C ₁₃ , chloro (short-chain chlorinated paraffins) (SCCPs)	85535-84-8 and others	N.D.	mg/kg	50	1500	Comply

Test Item	CAS No.	Sample	Unit	MDL	Limit	Conclusion
		166+168+169				
Alkanes C ₁₀ -C ₁₃ , chloro (short-chain chlorinated paraffins) (SCCPs)	85535-84-8 and others	N.D.	mg/kg	50	1500	Comply

GUANGZHOU GRG METROLOGY & TEST CO., LTD.

Address: No.31 Nanxiang Second Road, Science City, Huangpu District, Guangzhou, China
Tel: 4006020999 Fax: +86-020-38698685 Website: <http://www.grgtest.com>

TEST REPORT

CheckCode:807941
Report No.:C202213022047E

Test Item	CAS No.	Sample	Unit	MDL	Limit	Conclusion
		170+171+172				
Alkanes C ₁₀ -C ₁₃ , chloro (short-chain chlorinated paraffins) (SCCPs)	85535-84-8 and others	N.D.	mg/kg	50	1500	Comply

Test Item	CAS No.	Sample	Unit	MDL	Limit	Conclusion
		174+175				
Alkanes C ₁₀ -C ₁₃ , chloro (short-chain chlorinated paraffins) (SCCPs)	85535-84-8 and others	N.D.	mg/kg	50	1500	Comply

Test Item	CAS No.	Sample	Unit	MDL	Limit	Conclusion
		177+178+179				
Alkanes C ₁₀ -C ₁₃ , chloro (short-chain chlorinated paraffins) (SCCPs)	85535-84-8 and others	N.D.	mg/kg	50	1500	Comply

Test Item	CAS No.	Sample	Unit	MDL	Limit	Conclusion
		181+182+183				
Alkanes C ₁₀ -C ₁₃ , chloro (short-chain chlorinated paraffins) (SCCPs)	85535-84-8 and others	N.D.	mg/kg	50	1500	Comply

Test Item	CAS No.	Sample	Unit	MDL	Limit	Conclusion
		184+185+188				
Alkanes C ₁₀ -C ₁₃ , chloro (short-chain chlorinated paraffins) (SCCPs)	85535-84-8 and others	N.D.	mg/kg	50	1500	Comply

GUANGZHOU GRG METROLOGY & TEST CO., LTD.

Address: No.31 Nanxiang Second Road, Science City, Huangpu District, Guangzhou, China
Tel: 4006020999 Fax: +86-020-38698685 Website: <http://www.grgtest.com>

TEST REPORT

CheckCode:807941
Report No.:C202213022047E

Test Item	CAS No.	Sample	Unit	MDL	Limit	Conclusion
		189+190+191				
Alkanes C ₁₀ -C ₁₃ , chloro (short-chain chlorinated paraffins) (SCCPs)	85535-84-8 and others	N.D.	mg/kg	50	1500	Comply

Test Item	CAS No.	Sample	Unit	MDL	Limit	Conclusion
		194+198				
Alkanes C ₁₀ -C ₁₃ , chloro (short-chain chlorinated paraffins) (SCCPs)	85535-84-8 and others	N.D.	mg/kg	50	1500	Comply

Test Item	CAS No.	Sample	Unit	MDL	Limit	Conclusion
		201+203+204				
Alkanes C ₁₀ -C ₁₃ , chloro (short-chain chlorinated paraffins) (SCCPs)	85535-84-8 and others	N.D.	mg/kg	50	1500	Comply

Test Item	CAS No.	Sample	Unit	MDL	Limit	Conclusion
		207+208+209				
Alkanes C ₁₀ -C ₁₃ , chloro (short-chain chlorinated paraffins) (SCCPs)	85535-84-8 and others	N.D.	mg/kg	50	1500	Comply

Test Item	CAS No.	Sample	Unit	MDL	Limit	Conclusion
		210+211+212				
Alkanes C ₁₀ -C ₁₃ , chloro (short-chain chlorinated paraffins) (SCCPs)	85535-84-8 and others	N.D.	mg/kg	50	1500	Comply

GUANGZHOU GRG METROLOGY & TEST CO., LTD.

Address: No.31 Nanxiang Second Road, Science City, Huangpu District, Guangzhou, China
Tel: 4006020999 Fax: +86-020-38698685 Website: <http://www.grgtest.com>

TEST REPORT

CheckCode:807941
Report No.:C202213022047E

Test Item	CAS No.	Sample	Unit	MDL	Limit	Conclusion
		214+218				
Alkanes C ₁₀ -C ₁₃ , chloro (short-chain chlorinated paraffins) (SCCPs)	85535-84-8 and others	N.D.	mg/kg	50	1500	Comply

Test Item	CAS No.	Sample	Unit	MDL	Limit	Conclusion
		224+227				
Alkanes C ₁₀ -C ₁₃ , chloro (short-chain chlorinated paraffins) (SCCPs)	85535-84-8 and others	N.D.	mg/kg	50	1500	Comply

Test Item	CAS No.	Sample	Unit	MDL	Limit	Conclusion
		228+229+230				
Alkanes C ₁₀ -C ₁₃ , chloro (short-chain chlorinated paraffins) (SCCPs)	85535-84-8 and others	N.D.	mg/kg	50	1500	Comply

Test Item	CAS No.	Sample	Unit	MDL	Limit	Conclusion
		233+234+237				
Alkanes C ₁₀ -C ₁₃ , chloro (short-chain chlorinated paraffins) (SCCPs)	85535-84-8 and others	N.D.	mg/kg	50	1500	Comply

Test Item	CAS No.	Sample	Unit	MDL	Limit	Conclusion
		239+242+244				
Alkanes C ₁₀ -C ₁₃ , chloro (short-chain chlorinated paraffins) (SCCPs)	85535-84-8 and others	N.D.	mg/kg	50	1500	Comply

GUANGZHOU GRG METROLOGY & TEST CO., LTD.

Address: No.31 Nanxiang Second Road, Science City, Huangpu District, Guangzhou, China
Tel: 4006020999 Fax: +86-020-38698685 Website: <http://www.grgtest.com>

TEST REPORT

CheckCode:807941
Report No.:C202213022047E

Test Item	CAS No.	Sample	Unit	MDL	Limit	Conclusion
		246+247				
Alkanes C ₁₀ –C ₁₃ , chloro (short-chain chlorinated paraffins) (SCCPs)	85535-84-8 and others	N.D.	mg/kg	50	1500	Comply

Test Item	CAS No.	Sample	Unit	MDL	Limit	Conclusion
		248+249+250 -1				
Alkanes C ₁₀ –C ₁₃ , chloro (short-chain chlorinated paraffins) (SCCPs)	85535-84-8 and others	N.D.	mg/kg	50	1500	Comply

Test Item	CAS No.	Sample	Unit	MDL	Limit	Conclusion
		250-2+251				
Alkanes C ₁₀ –C ₁₃ , chloro (short-chain chlorinated paraffins) (SCCPs)	85535-84-8 and others	N.D.	mg/kg	50	1500	Comply

2. European Regulation POPs (EU) 2019/1021–Hexabromocyclododecane (HBCDD) and all major diastereoisomers identified (α -HBCDD, β -HBCDD, γ -HBCDD)

Test Method: With reference to EPA 3550C:2007, analysis was performed by GC-MS.

Test Item	CAS No.	Sample	Unit	MDL	Limit	Conclusion
		1-1+1-2+2				
Hexabromocyclododecane (HBCDD) and all major diastereoisomers identified (α -HBCDD, β -HBCDD, γ -HBCDD)	25637-99-4, 3194-55-6, 134237-50-6, 134237-51-7, 134237-52-8	N.D.	mg/kg	10	100	Comply

TEST REPORT

CheckCode:807941
Report No.:C202213022047E

Test Item	CAS No.	Sample	Unit	MDL	Limit	Conclusion
		5+6+7				
Hexabromocyclododecane (HBCDD) and all major diastereoisomers identified (α -HBCDD, β -HBCDD, γ -HBCDD)	25637-99-4, 3194-55-6, 134237-50-6, 134237-51-7, 134237-52-8	N.D.	mg/kg	10	100	Comply

Test Item	CAS No.	Sample	Unit	MDL	Limit	Conclusion
		9+16				
Hexabromocyclododecane (HBCDD) and all major diastereoisomers identified (α -HBCDD, β -HBCDD, γ -HBCDD)	25637-99-4, 3194-55-6, 134237-50-6, 134237-51-7, 134237-52-8	N.D.	mg/kg	10	100	Comply

Test Item	CAS No.	Sample	Unit	MDL	Limit	Conclusion
		17+19				
Hexabromocyclododecane (HBCDD) and all major diastereoisomers identified (α -HBCDD, β -HBCDD, γ -HBCDD)	25637-99-4, 3194-55-6, 134237-50-6, 134237-51-7, 134237-52-8	N.D.	mg/kg	10	100	Comply

Test Item	CAS No.	Sample	Unit	MDL	Limit	Conclusion
		20+22+23				
Hexabromocyclododecane (HBCDD) and all major diastereoisomers identified (α -HBCDD, β -HBCDD, γ -HBCDD)	25637-99-4, 3194-55-6, 134237-50-6, 134237-51-7, 134237-52-8	N.D.	mg/kg	10	100	Comply

TEST REPORT

CheckCode:807941
Report No.:C202213022047E

Test Item	CAS No.	Sample	Unit	MDL	Limit	Conclusion
		24+25+27				
Hexabromocyclododecane (HBCDD) and all major diastereoisomers identified (α -HBCDD, β -HBCDD, γ -HBCDD)	25637-99-4, 3194-55-6, 134237-50-6, 134237-51-7, 134237-52-8	N.D.	mg/kg	10	100	Comply

Test Item	CAS No.	Sample	Unit	MDL	Limit	Conclusion
		29+32				
Hexabromocyclododecane (HBCDD) and all major diastereoisomers identified (α -HBCDD, β -HBCDD, γ -HBCDD)	25637-99-4, 3194-55-6, 134237-50-6, 134237-51-7, 134237-52-8	N.D.	mg/kg	10	100	Comply

Test Item	CAS No.	Sample	Unit	MDL	Limit	Conclusion
		35+37+38				
Hexabromocyclododecane (HBCDD) and all major diastereoisomers identified (α -HBCDD, β -HBCDD, γ -HBCDD)	25637-99-4, 3194-55-6, 134237-50-6, 134237-51-7, 134237-52-8	N.D.	mg/kg	10	100	Comply

Test Item	CAS No.	Sample	Unit	MDL	Limit	Conclusion
		39				
Hexabromocyclododecane (HBCDD) and all major diastereoisomers identified (α -HBCDD, β -HBCDD, γ -HBCDD)	25637-99-4, 3194-55-6, 134237-50-6, 134237-51-7, 134237-52-8	N.D.	mg/kg	10	100	Comply

TEST REPORT

CheckCode:807941
Report No.:C202213022047E

Test Item	CAS No.	Sample	Unit	MDL	Limit	Conclusion
		48				
Hexabromocyclododecane (HBCDD) and all major diastereoisomers identified (α -HBCDD, β -HBCDD, γ -HBCDD)	25637-99-4, 3194-55-6, 134237-50-6, 134237-51-7, 134237-52-8	N.D.	mg/kg	10	100	Comply

Test Item	CAS No.	Sample	Unit	MDL	Limit	Conclusion
		49+50+52				
Hexabromocyclododecane (HBCDD) and all major diastereoisomers identified (α -HBCDD, β -HBCDD, γ -HBCDD)	25637-99-4, 3194-55-6, 134237-50-6, 134237-51-7, 134237-52-8	N.D.	mg/kg	10	100	Comply

Test Item	CAS No.	Sample	Unit	MDL	Limit	Conclusion
		55+56				
Hexabromocyclododecane (HBCDD) and all major diastereoisomers identified (α -HBCDD, β -HBCDD, γ -HBCDD)	25637-99-4, 3194-55-6, 134237-50-6, 134237-51-7, 134237-52-8	N.D.	mg/kg	10	100	Comply

Test Item	CAS No.	Sample	Unit	MDL	Limit	Conclusion
		58+59				
Hexabromocyclododecane (HBCDD) and all major diastereoisomers identified (α -HBCDD, β -HBCDD, γ -HBCDD)	25637-99-4, 3194-55-6, 134237-50-6, 134237-51-7, 134237-52-8	N.D.	mg/kg	10	100	Comply

TEST REPORT

CheckCode:807941
Report No.:C202213022047E

Test Item	CAS No.	Sample	Unit	MDL	Limit	Conclusion
		61+64+66				
Hexabromocyclododecane (HBCDD) and all major diastereoisomers identified (α -HBCDD, β -HBCDD, γ -HBCDD)	25637-99-4, 3194-55-6, 134237-50-6, 134237-51-7, 134237-52-8	N.D.	mg/kg	10	100	Comply

Test Item	CAS No.	Sample	Unit	MDL	Limit	Conclusion
		67+68+69				
Hexabromocyclododecane (HBCDD) and all major diastereoisomers identified (α -HBCDD, β -HBCDD, γ -HBCDD)	25637-99-4, 3194-55-6, 134237-50-6, 134237-51-7, 134237-52-8	N.D.	mg/kg	10	100	Comply

Test Item	CAS No.	Sample	Unit	MDL	Limit	Conclusion
		70+71+72				
Hexabromocyclododecane (HBCDD) and all major diastereoisomers identified (α -HBCDD, β -HBCDD, γ -HBCDD)	25637-99-4, 3194-55-6, 134237-50-6, 134237-51-7, 134237-52-8	N.D.	mg/kg	10	100	Comply

Test Item	CAS No.	Sample	Unit	MDL	Limit	Conclusion
		73+74+77				
Hexabromocyclododecane (HBCDD) and all major diastereoisomers identified (α -HBCDD, β -HBCDD, γ -HBCDD)	25637-99-4, 3194-55-6, 134237-50-6, 134237-51-7, 134237-52-8	N.D.	mg/kg	10	100	Comply

GUANGZHOU GRG METROLOGY & TEST CO., LTD.

Address: No.31 Nanxiang Second Road, Science City, Huangpu District, Guangzhou, China
Tel: 4006020999 Fax: +86-020-38698685 Website: <http://www.grgtest.com>

TEST REPORT

CheckCode:807941
Report No.:C202213022047E

Test Item	CAS No.	Sample	Unit	MDL	Limit	Conclusion
		78+81+84				
Hexabromocyclododecane (HBCDD) and all major diastereoisomers identified (α -HBCDD, β -HBCDD, γ -HBCDD)	25637-99-4, 3194-55-6, 134237-50-6, 134237-51-7, 134237-52-8	N.D.	mg/kg	10	100	Comply

Test Item	CAS No.	Sample	Unit	MDL	Limit	Conclusion
		96+97+99				
Hexabromocyclododecane (HBCDD) and all major diastereoisomers identified (α -HBCDD, β -HBCDD, γ -HBCDD)	25637-99-4, 3194-55-6, 134237-50-6, 134237-51-7, 134237-52-8	N.D.	mg/kg	10	100	Comply

Test Item	CAS No.	Sample	Unit	MDL	Limit	Conclusion
		100+101+102				
Hexabromocyclododecane (HBCDD) and all major diastereoisomers identified (α -HBCDD, β -HBCDD, γ -HBCDD)	25637-99-4, 3194-55-6, 134237-50-6, 134237-51-7, 134237-52-8	N.D.	mg/kg	10	100	Comply

Test Item	CAS No.	Sample	Unit	MDL	Limit	Conclusion
		103+106				
Hexabromocyclododecane (HBCDD) and all major diastereoisomers identified (α -HBCDD, β -HBCDD, γ -HBCDD)	25637-99-4, 3194-55-6, 134237-50-6, 134237-51-7, 134237-52-8	N.D.	mg/kg	10	100	Comply

GUANGZHOU GRG METROLOGY & TEST CO., LTD.

Address: No.31 Nanxiang Second Road, Science City, Huangpu District, Guangzhou, China
Tel: 4006020999 Fax: +86-020-38698685 Website: <http://www.grgtest.com>

TEST REPORT

CheckCode:807941
Report No.:C202213022047E

Test Item	CAS No.	Sample	Unit	MDL	Limit	Conclusion
		107+108+109				
Hexabromocyclododecane (HBCDD) and all major diastereoisomers identified (α -HBCDD, β -HBCDD, γ -HBCDD)	25637-99-4, 3194-55-6, 134237-50-6, 134237-51-7, 134237-52-8	N.D.	mg/kg	10	100	Comply

Test Item	CAS No.	Sample	Unit	MDL	Limit	Conclusion
		110+111+115				
Hexabromocyclododecane (HBCDD) and all major diastereoisomers identified (α -HBCDD, β -HBCDD, γ -HBCDD)	25637-99-4, 3194-55-6, 134237-50-6, 134237-51-7, 134237-52-8	N.D.	mg/kg	10	100	Comply

Test Item	CAS No.	Sample	Unit	MDL	Limit	Conclusion
		116+117+119				
Hexabromocyclododecane (HBCDD) and all major diastereoisomers identified (α -HBCDD, β -HBCDD, γ -HBCDD)	25637-99-4, 3194-55-6, 134237-50-6, 134237-51-7, 134237-52-8	N.D.	mg/kg	10	100	Comply

Test Item	CAS No.	Sample	Unit	MDL	Limit	Conclusion
		122+123+124				
Hexabromocyclododecane (HBCDD) and all major diastereoisomers identified (α -HBCDD, β -HBCDD, γ -HBCDD)	25637-99-4, 3194-55-6, 134237-50-6, 134237-51-7, 134237-52-8	N.D.	mg/kg	10	100	Comply

GUANGZHOU GRG METROLOGY & TEST CO., LTD.

Address: No.31 Nanxiang Second Road, Science City, Huangpu District, Guangzhou, China
Tel: 4006020999 Fax: +86-020-38698685 Website: <http://www.grgtest.com>

TEST REPORT

CheckCode:807941
Report No.:C202213022047E

Test Item	CAS No.	Sample	Unit	MDL	Limit	Conclusion
		125+126+127				
Hexabromocyclododecane (HBCDD) and all major diastereoisomers identified (α -HBCDD, β -HBCDD, γ -HBCDD)	25637-99-4, 3194-55-6, 134237-50-6, 134237-51-7, 134237-52-8	N.D.	mg/kg	10	100	Comply

Test Item	CAS No.	Sample	Unit	MDL	Limit	Conclusion
		128+132+133				
Hexabromocyclododecane (HBCDD) and all major diastereoisomers identified (α -HBCDD, β -HBCDD, γ -HBCDD)	25637-99-4, 3194-55-6, 134237-50-6, 134237-51-7, 134237-52-8	N.D.	mg/kg	10	100	Comply

Test Item	CAS No.	Sample	Unit	MDL	Limit	Conclusion
		136+139				
Hexabromocyclododecane (HBCDD) and all major diastereoisomers identified (α -HBCDD, β -HBCDD, γ -HBCDD)	25637-99-4, 3194-55-6, 134237-50-6, 134237-51-7, 134237-52-8	N.D.	mg/kg	10	100	Comply

Test Item	CAS No.	Sample	Unit	MDL	Limit	Conclusion
		141+142+144				
Hexabromocyclododecane (HBCDD) and all major diastereoisomers identified (α -HBCDD, β -HBCDD, γ -HBCDD)	25637-99-4, 3194-55-6, 134237-50-6, 134237-51-7, 134237-52-8	N.D.	mg/kg	10	100	Comply

TEST REPORT

CheckCode:807941
Report No.:C202213022047E

Test Item	CAS No.	Sample	Unit	MDL	Limit	Conclusion
		146+148+152				
Hexabromocyclododecane (HBCDD) and all major diastereoisomers identified (α -HBCDD, β -HBCDD, γ -HBCDD)	25637-99-4, 3194-55-6, 134237-50-6, 134237-51-7, 134237-52-8	N.D.	mg/kg	10	100	Comply

Test Item	CAS No.	Sample	Unit	MDL	Limit	Conclusion
		155+156+157				
Hexabromocyclododecane (HBCDD) and all major diastereoisomers identified (α -HBCDD, β -HBCDD, γ -HBCDD)	25637-99-4, 3194-55-6, 134237-50-6, 134237-51-7, 134237-52-8	N.D.	mg/kg	10	100	Comply

Test Item	CAS No.	Sample	Unit	MDL	Limit	Conclusion
		158+159+160				
Hexabromocyclododecane (HBCDD) and all major diastereoisomers identified (α -HBCDD, β -HBCDD, γ -HBCDD)	25637-99-4, 3194-55-6, 134237-50-6, 134237-51-7, 134237-52-8	N.D.	mg/kg	10	100	Comply

Test Item	CAS No.	Sample	Unit	MDL	Limit	Conclusion
		162+164				
Hexabromocyclododecane (HBCDD) and all major diastereoisomers identified (α -HBCDD, β -HBCDD, γ -HBCDD)	25637-99-4, 3194-55-6, 134237-50-6, 134237-51-7, 134237-52-8	N.D.	mg/kg	10	100	Comply

GUANGZHOU GRG METROLOGY & TEST CO., LTD.

Address: No.31 Nanxiang Second Road, Science City, Huangpu District, Guangzhou, China
Tel: 4006020999 Fax: +86-020-38698685 Website: <http://www.grgtest.com>

TEST REPORT

CheckCode:807941
Report No.:C202213022047E

Test Item	CAS No.	Sample	Unit	MDL	Limit	Conclusion
		166+168+169				
Hexabromocyclododecane (HBCDD) and all major diastereoisomers identified (α -HBCDD, β -HBCDD, γ -HBCDD)	25637-99-4, 3194-55-6, 134237-50-6, 134237-51-7, 134237-52-8	N.D.	mg/kg	10	100	Comply

Test Item	CAS No.	Sample	Unit	MDL	Limit	Conclusion
		170+171+172				
Hexabromocyclododecane (HBCDD) and all major diastereoisomers identified (α -HBCDD, β -HBCDD, γ -HBCDD)	25637-99-4, 3194-55-6, 134237-50-6, 134237-51-7, 134237-52-8	N.D.	mg/kg	10	100	Comply

Test Item	CAS No.	Sample	Unit	MDL	Limit	Conclusion
		174+175				
Hexabromocyclododecane (HBCDD) and all major diastereoisomers identified (α -HBCDD, β -HBCDD, γ -HBCDD)	25637-99-4, 3194-55-6, 134237-50-6, 134237-51-7, 134237-52-8	N.D.	mg/kg	10	100	Comply

Test Item	CAS No.	Sample	Unit	MDL	Limit	Conclusion
		177+178+179				
Hexabromocyclododecane (HBCDD) and all major diastereoisomers identified (α -HBCDD, β -HBCDD, γ -HBCDD)	25637-99-4, 3194-55-6, 134237-50-6, 134237-51-7, 134237-52-8	N.D.	mg/kg	10	100	Comply

TEST REPORT

CheckCode:807941
Report No.:C202213022047E

Test Item	CAS No.	Sample	Unit	MDL	Limit	Conclusion
		181+182+183				
Hexabromocyclododecane (HBCDD) and all major diastereoisomers identified (α -HBCDD, β -HBCDD, γ -HBCDD)	25637-99-4, 3194-55-6, 134237-50-6, 134237-51-7, 134237-52-8	N.D.	mg/kg	10	100	Comply

Test Item	CAS No.	Sample	Unit	MDL	Limit	Conclusion
		184+185+188				
Hexabromocyclododecane (HBCDD) and all major diastereoisomers identified (α -HBCDD, β -HBCDD, γ -HBCDD)	25637-99-4, 3194-55-6, 134237-50-6, 134237-51-7, 134237-52-8	N.D.	mg/kg	10	100	Comply

Test Item	CAS No.	Sample	Unit	MDL	Limit	Conclusion
		189+190+191				
Hexabromocyclododecane (HBCDD) and all major diastereoisomers identified (α -HBCDD, β -HBCDD, γ -HBCDD)	25637-99-4, 3194-55-6, 134237-50-6, 134237-51-7, 134237-52-8	N.D.	mg/kg	10	100	Comply

Test Item	CAS No.	Sample	Unit	MDL	Limit	Conclusion
		194+198				
Hexabromocyclododecane (HBCDD) and all major diastereoisomers identified (α -HBCDD, β -HBCDD, γ -HBCDD)	25637-99-4, 3194-55-6, 134237-50-6, 134237-51-7, 134237-52-8	N.D.	mg/kg	10	100	Comply

TEST REPORT

CheckCode:807941
Report No.:C202213022047E

Test Item	CAS No.	Sample	Unit	MDL	Limit	Conclusion
		201+203+204				
Hexabromocyclododecane (HBCDD) and all major diastereoisomers identified (α -HBCDD, β -HBCDD, γ -HBCDD)	25637-99-4, 3194-55-6, 134237-50-6, 134237-51-7, 134237-52-8	N.D.	mg/kg	10	100	Comply

Test Item	CAS No.	Sample	Unit	MDL	Limit	Conclusion
		207+208+209				
Hexabromocyclododecane (HBCDD) and all major diastereoisomers identified (α -HBCDD, β -HBCDD, γ -HBCDD)	25637-99-4, 3194-55-6, 134237-50-6, 134237-51-7, 134237-52-8	N.D.	mg/kg	10	100	Comply

Test Item	CAS No.	Sample	Unit	MDL	Limit	Conclusion
		210+211+212				
Hexabromocyclododecane (HBCDD) and all major diastereoisomers identified (α -HBCDD, β -HBCDD, γ -HBCDD)	25637-99-4, 3194-55-6, 134237-50-6, 134237-51-7, 134237-52-8	N.D.	mg/kg	10	100	Comply

Test Item	CAS No.	Sample	Unit	MDL	Limit	Conclusion
		214+218				
Hexabromocyclododecane (HBCDD) and all major diastereoisomers identified (α -HBCDD, β -HBCDD, γ -HBCDD)	25637-99-4, 3194-55-6, 134237-50-6, 134237-51-7, 134237-52-8	N.D.	mg/kg	10	100	Comply

TEST REPORT

CheckCode:807941
Report No.:C202213022047E

Test Item	CAS No.	Sample	Unit	MDL	Limit	Conclusion
		224+227				
Hexabromocyclododecane (HBCDD) and all major diastereoisomers identified (α -HBCDD, β -HBCDD, γ -HBCDD)	25637-99-4, 3194-55-6, 134237-50-6, 134237-51-7, 134237-52-8	N.D.	mg/kg	10	100	Comply

Test Item	CAS No.	Sample	Unit	MDL	Limit	Conclusion
		228+229+230				
Hexabromocyclododecane (HBCDD) and all major diastereoisomers identified (α -HBCDD, β -HBCDD, γ -HBCDD)	25637-99-4, 3194-55-6, 134237-50-6, 134237-51-7, 134237-52-8	N.D.	mg/kg	10	100	Comply

Test Item	CAS No.	Sample	Unit	MDL	Limit	Conclusion
		233+234+237				
Hexabromocyclododecane (HBCDD) and all major diastereoisomers identified (α -HBCDD, β -HBCDD, γ -HBCDD)	25637-99-4, 3194-55-6, 134237-50-6, 134237-51-7, 134237-52-8	N.D.	mg/kg	10	100	Comply

Test Item	CAS No.	Sample	Unit	MDL	Limit	Conclusion
		239+242+244				
Hexabromocyclododecane (HBCDD) and all major diastereoisomers identified (α -HBCDD, β -HBCDD, γ -HBCDD)	25637-99-4, 3194-55-6, 134237-50-6, 134237-51-7, 134237-52-8	N.D.	mg/kg	10	100	Comply

TEST REPORT

CheckCode:807941
Report No.:C202213022047E

Test Item	CAS No.	Sample	Unit	MDL	Limit	Conclusion
		246+247				
Hexabromocyclododecane (HBCDD) and all major diastereoisomers identified (α -HBCDD, β -HBCDD, γ -HBCDD)	25637-99-4, 3194-55-6, 134237-50-6, 134237-51-7, 134237-52-8	N.D.	mg/kg	10	100	Comply

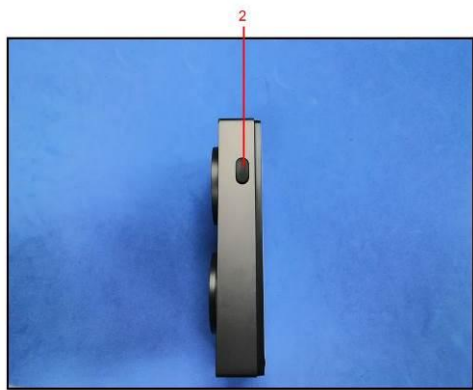
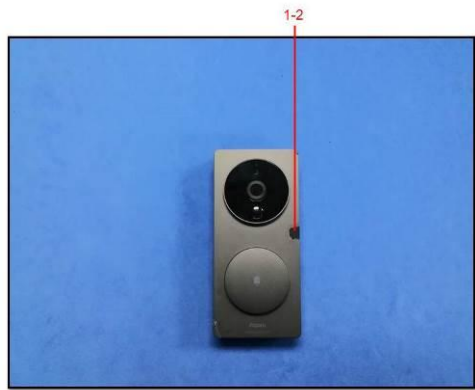
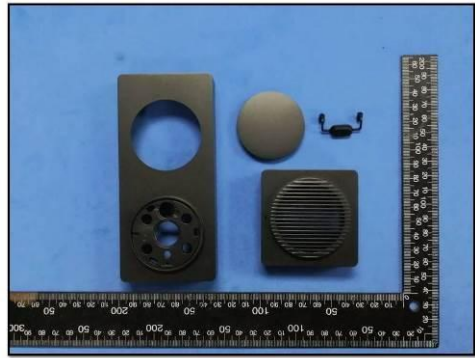
Test Item	CAS No.	Sample	Unit	MDL	Limit	Conclusion
		248+249+250 -1				
Hexabromocyclododecane (HBCDD) and all major diastereoisomers identified (α -HBCDD, β -HBCDD, γ -HBCDD)	25637-99-4, 3194-55-6, 134237-50-6, 134237-51-7, 134237-52-8	N.D.	mg/kg	10	100	Comply

Test Item	CAS No.	Sample	Unit	MDL	Limit	Conclusion
		250-2+251				
Hexabromocyclododecane (HBCDD) and all major diastereoisomers identified (α -HBCDD, β -HBCDD, γ -HBCDD)	25637-99-4, 3194-55-6, 134237-50-6, 134237-51-7, 134237-52-8	N.D.	mg/kg	10	100	Comply

TEST REPORT

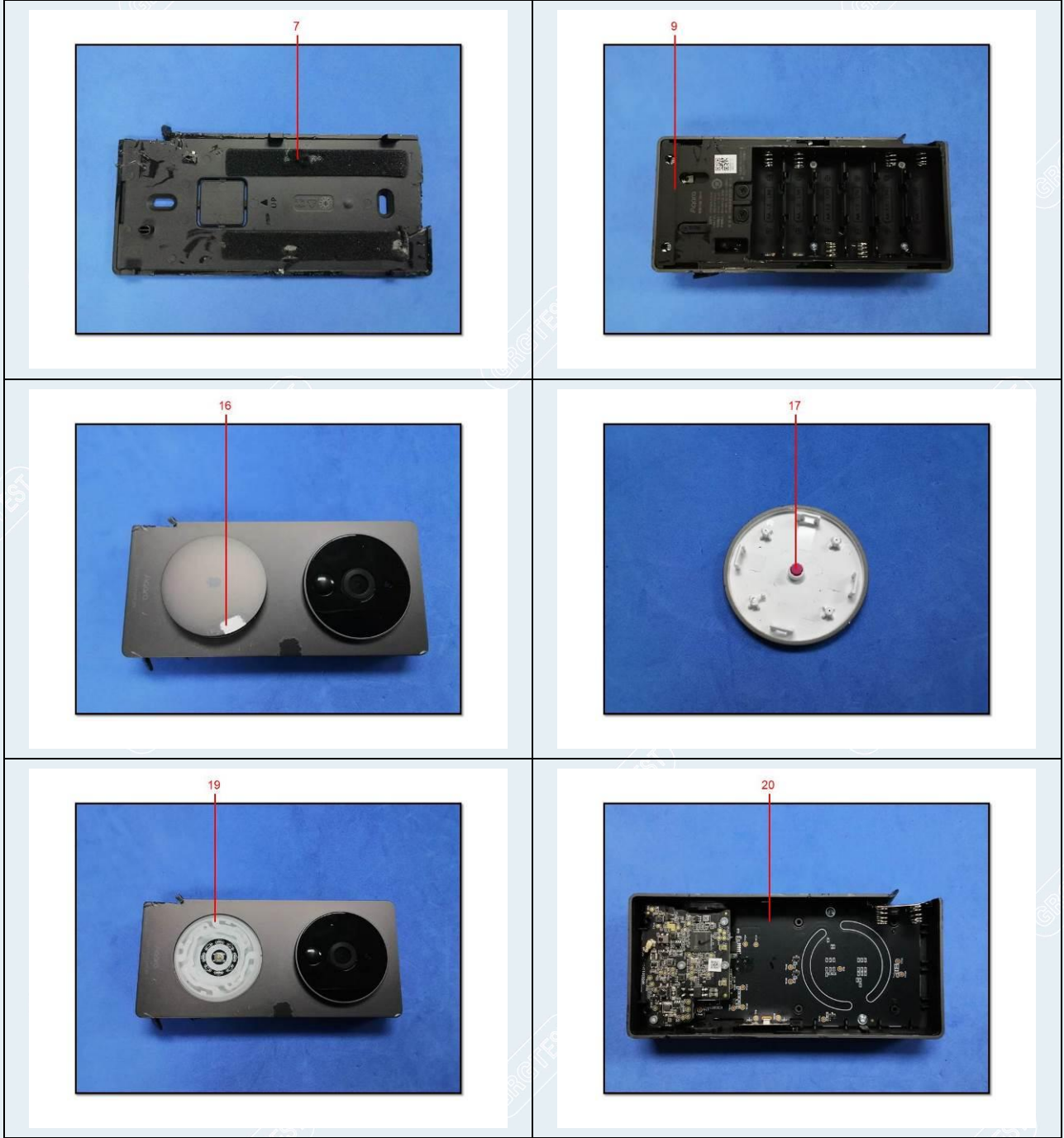
CheckCode:807941
Report No.:C202213022047E

Photo of Sample



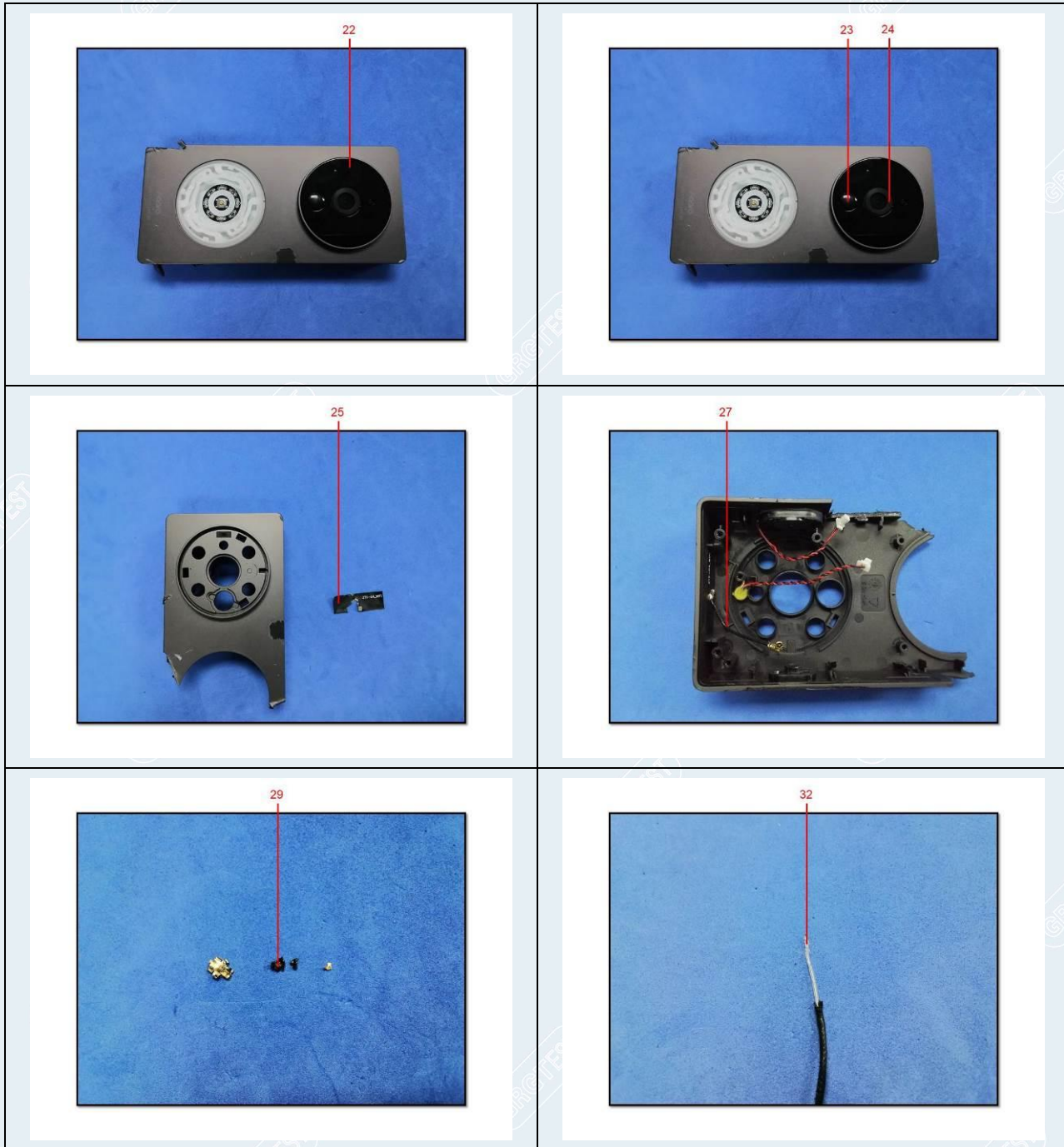
TEST REPORT

CheckCode:807941
Report No.:C202213022047E



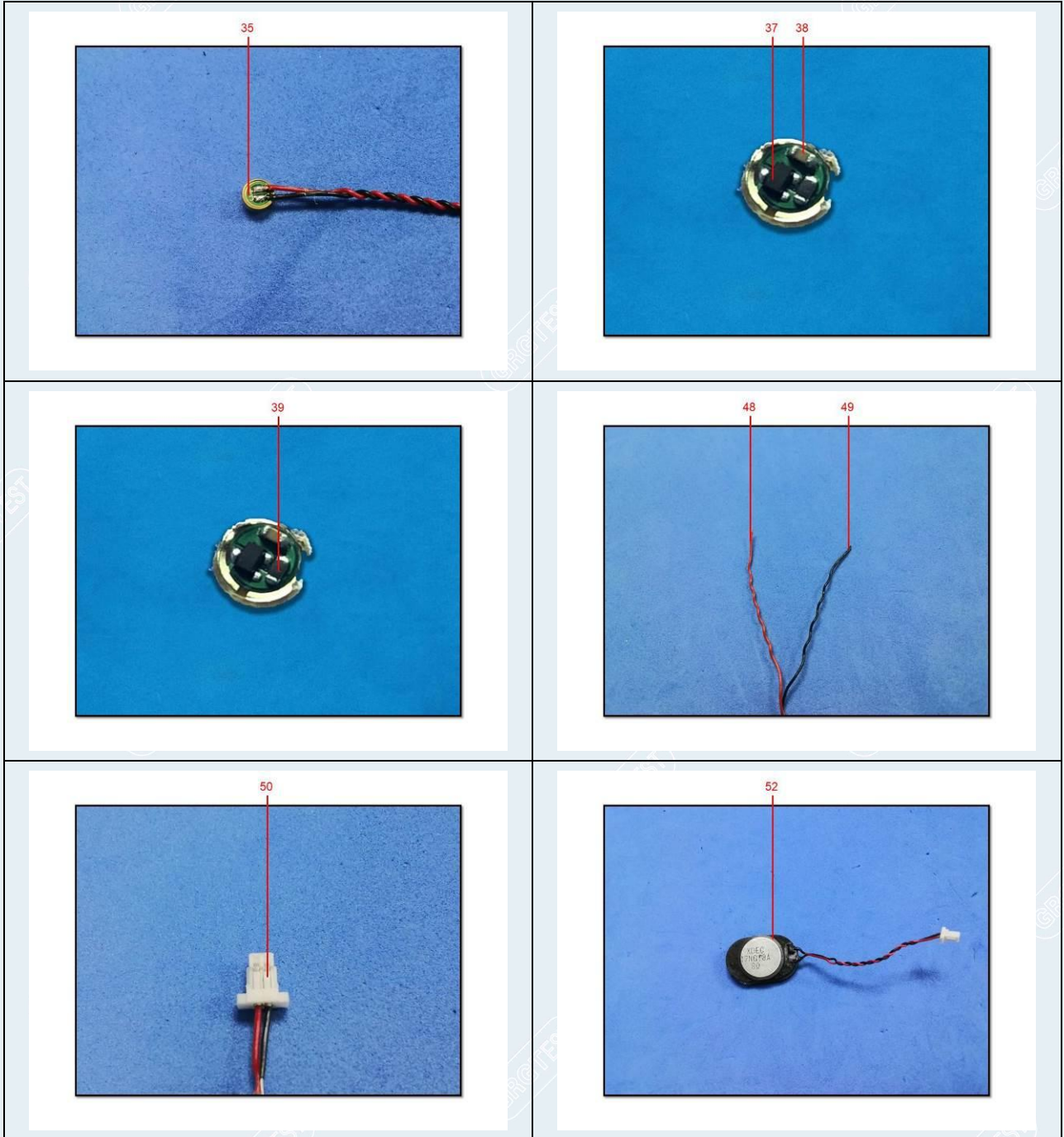
TEST REPORT

CheckCode:807941
Report No.:C202213022047E



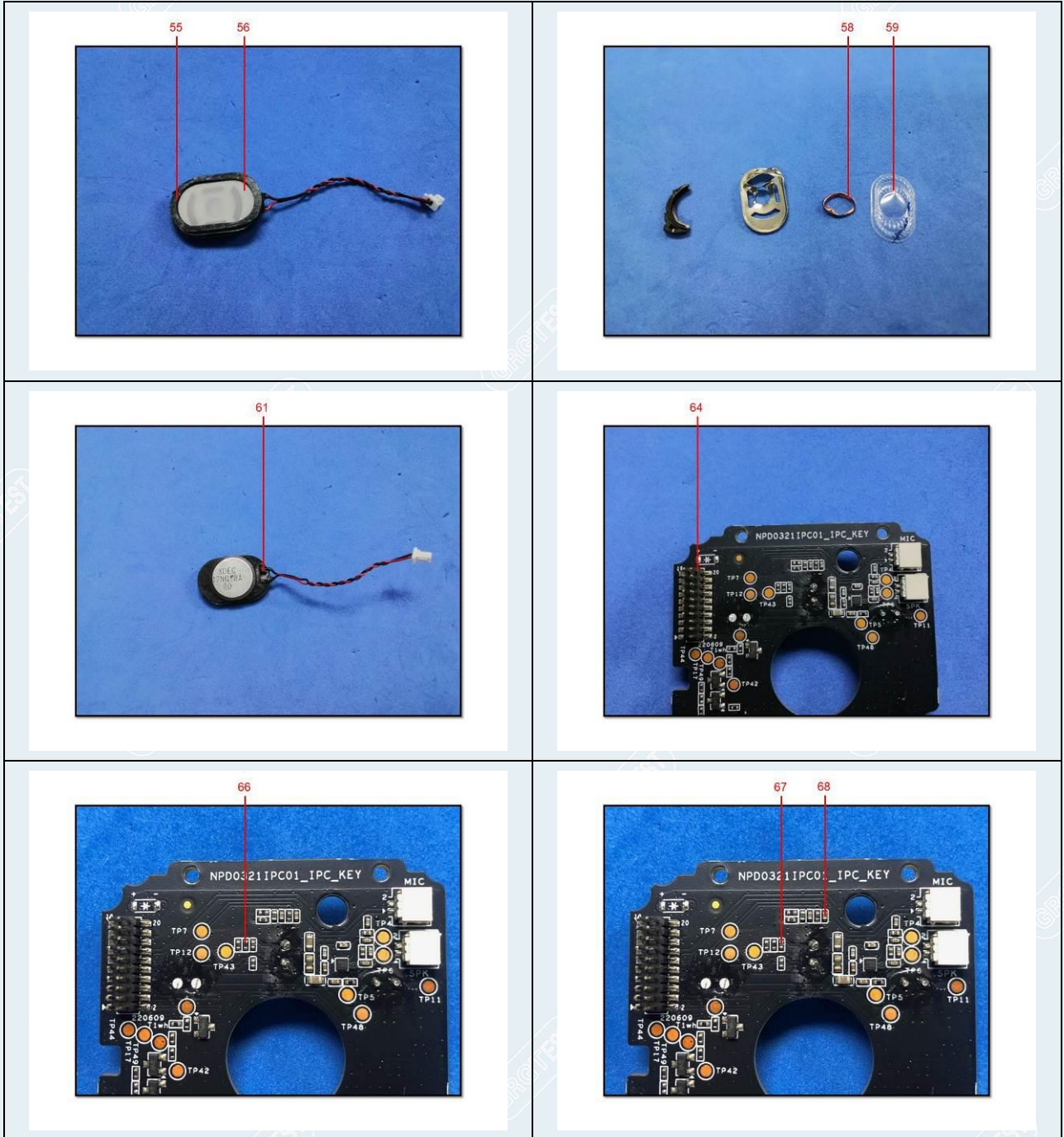
TEST REPORT

CheckCode:807941
Report No.:C202213022047E



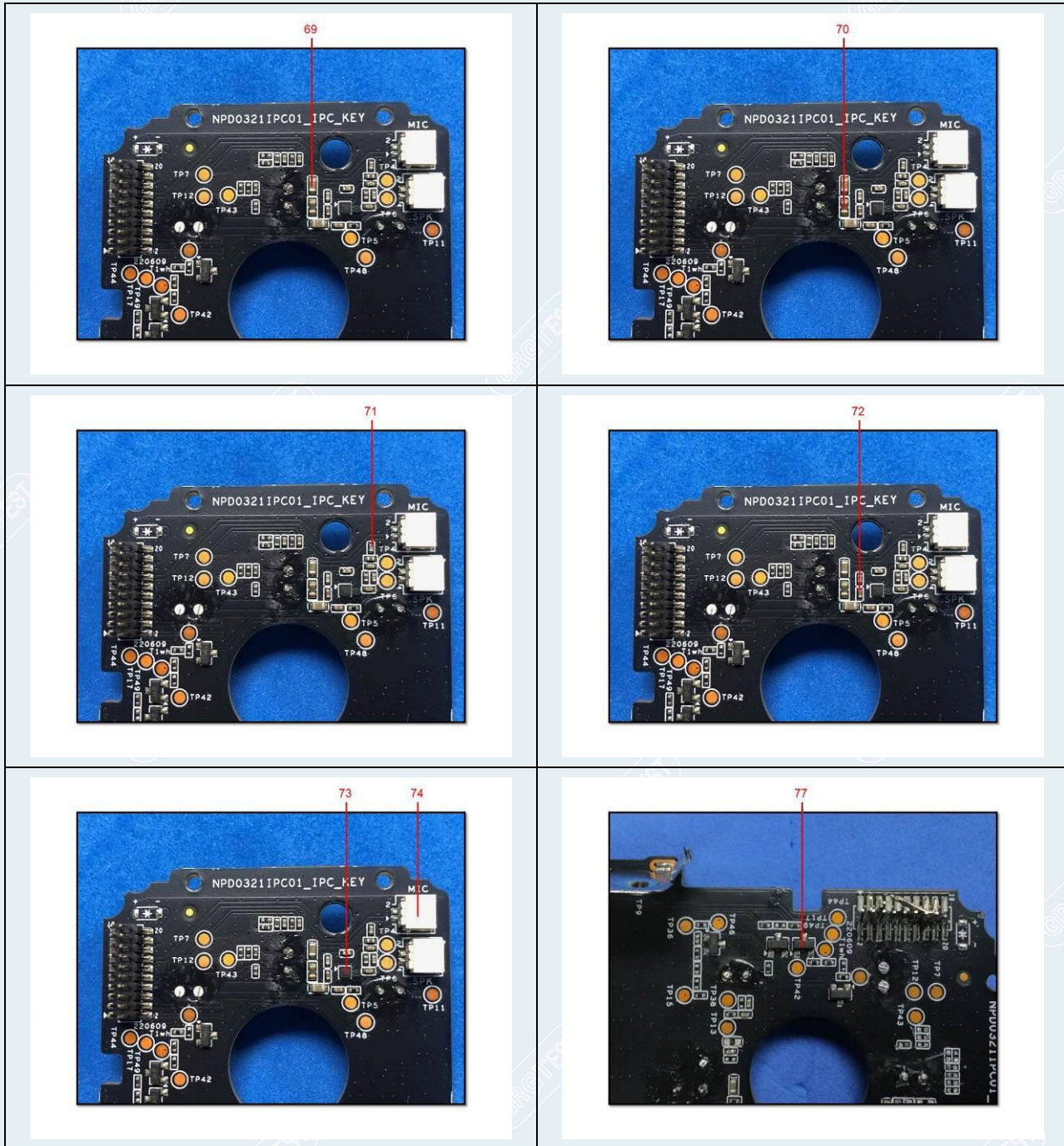
TEST REPORT

CheckCode:807941
Report No.:C202213022047E



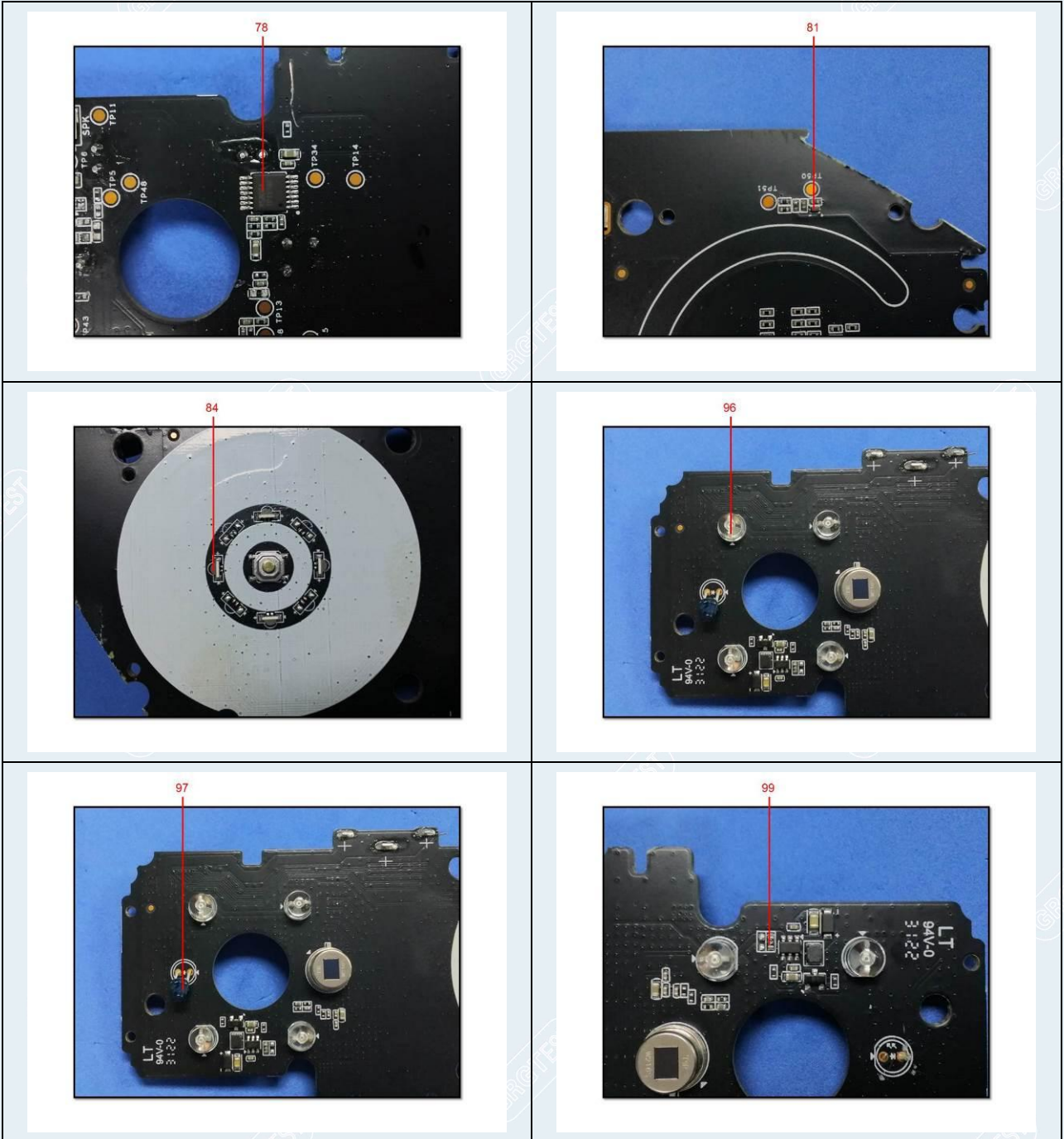
TEST REPORT

CheckCode:807941
Report No.:C202213022047E



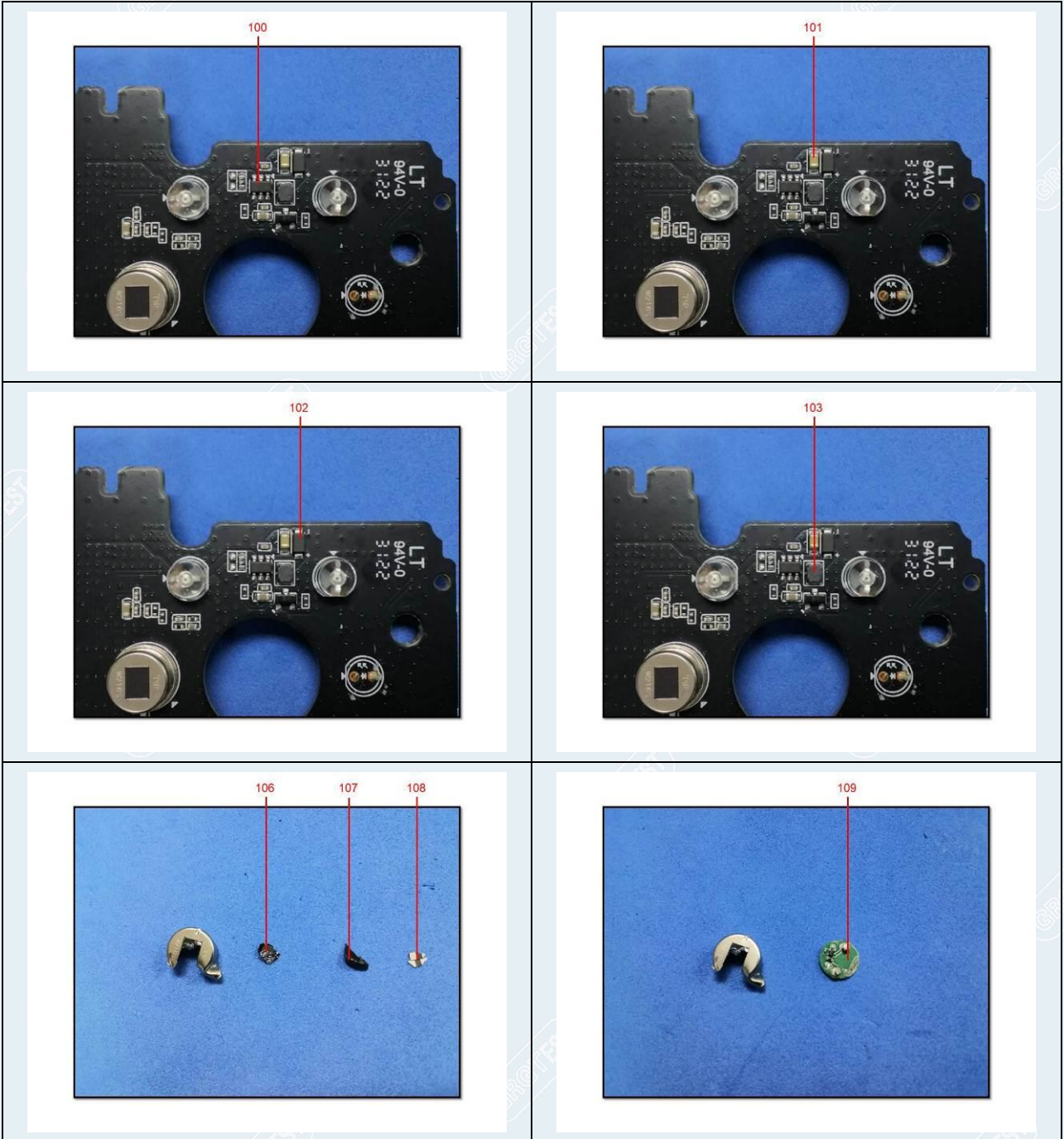
TEST REPORT

CheckCode:807941
Report No.:C202213022047E



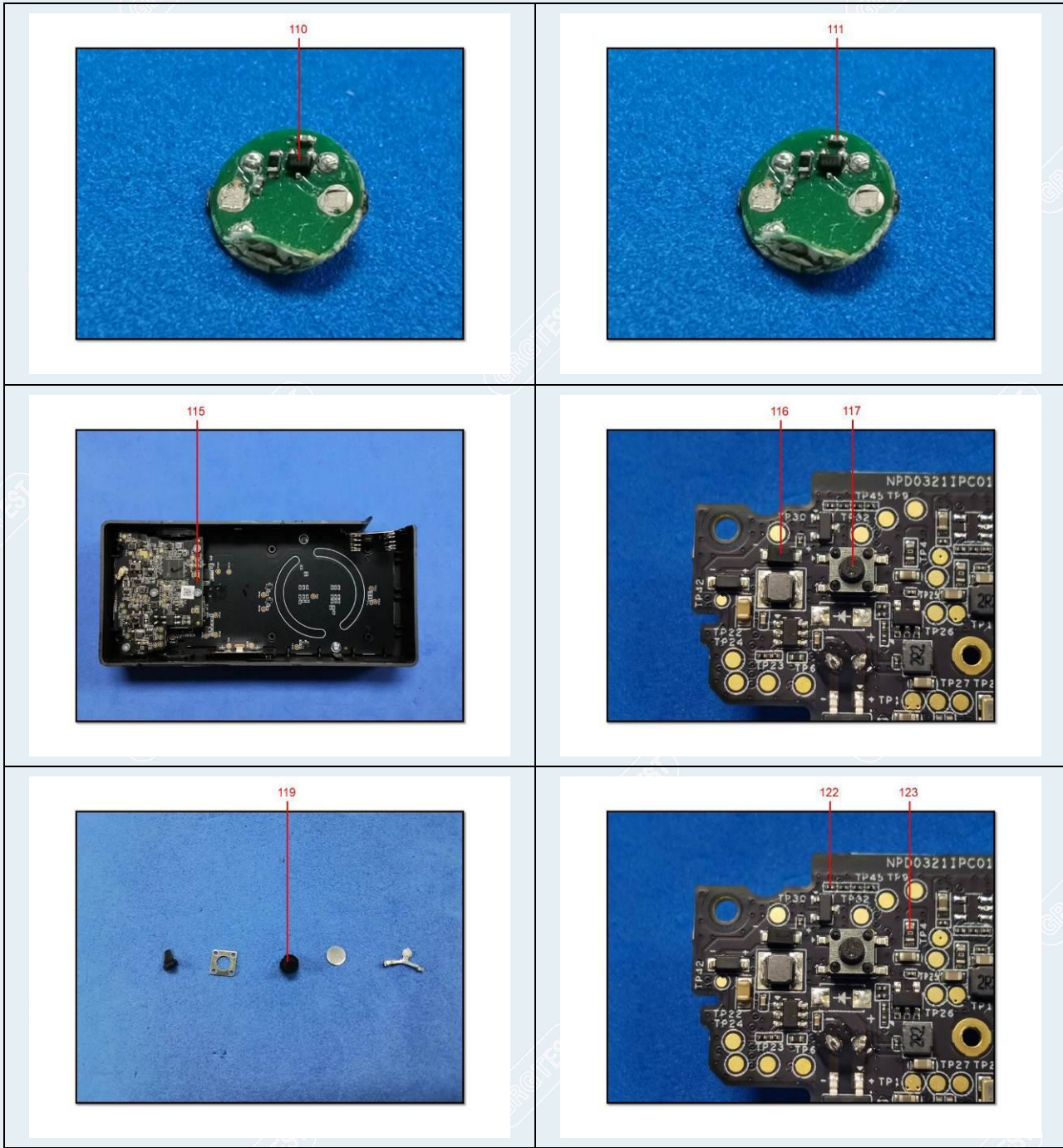
TEST REPORT

CheckCode:807941
Report No.:C202213022047E



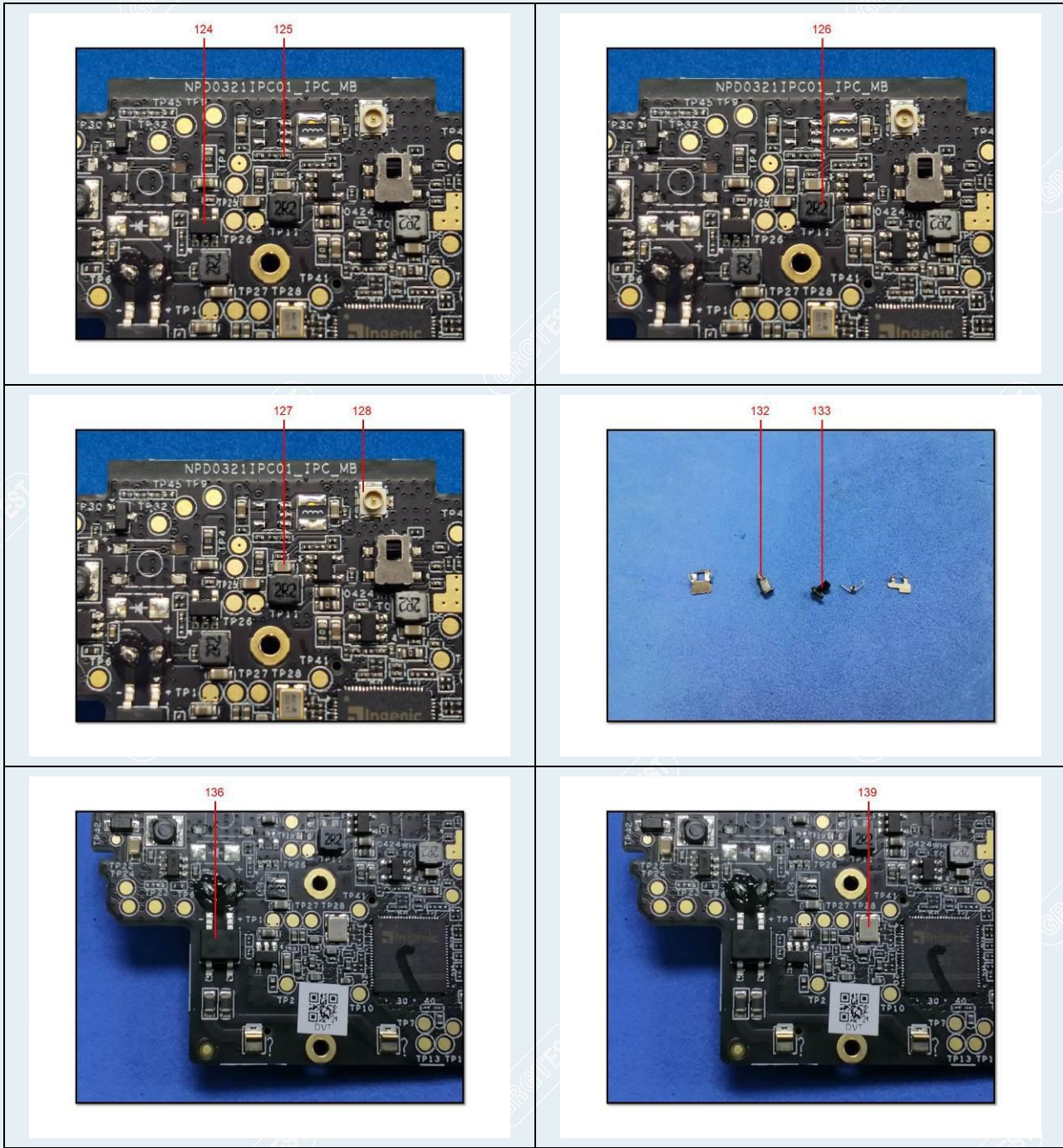
TEST REPORT

CheckCode:807941
Report No.:C202213022047E



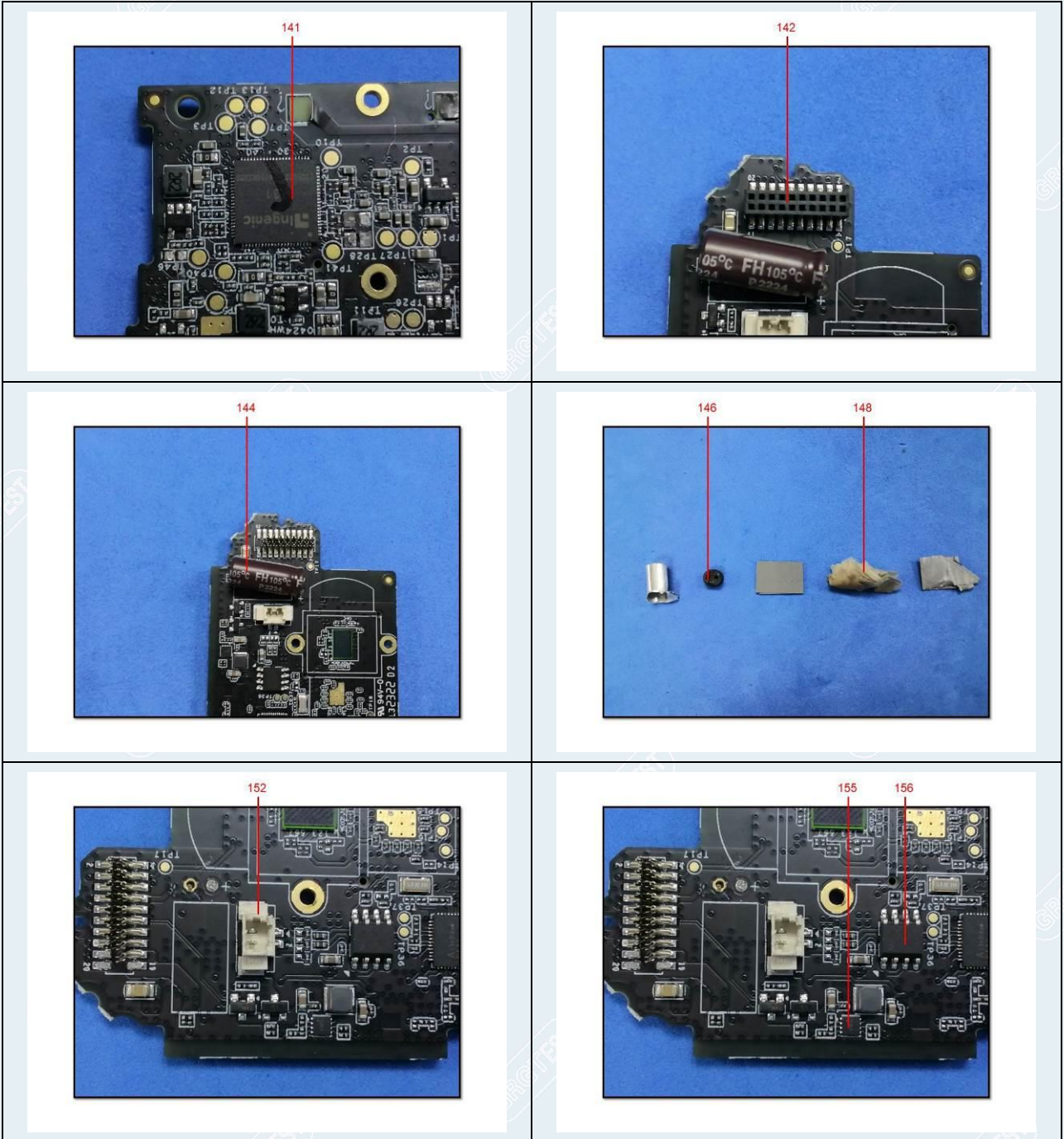
TEST REPORT

CheckCode:807941
Report No.:C202213022047E



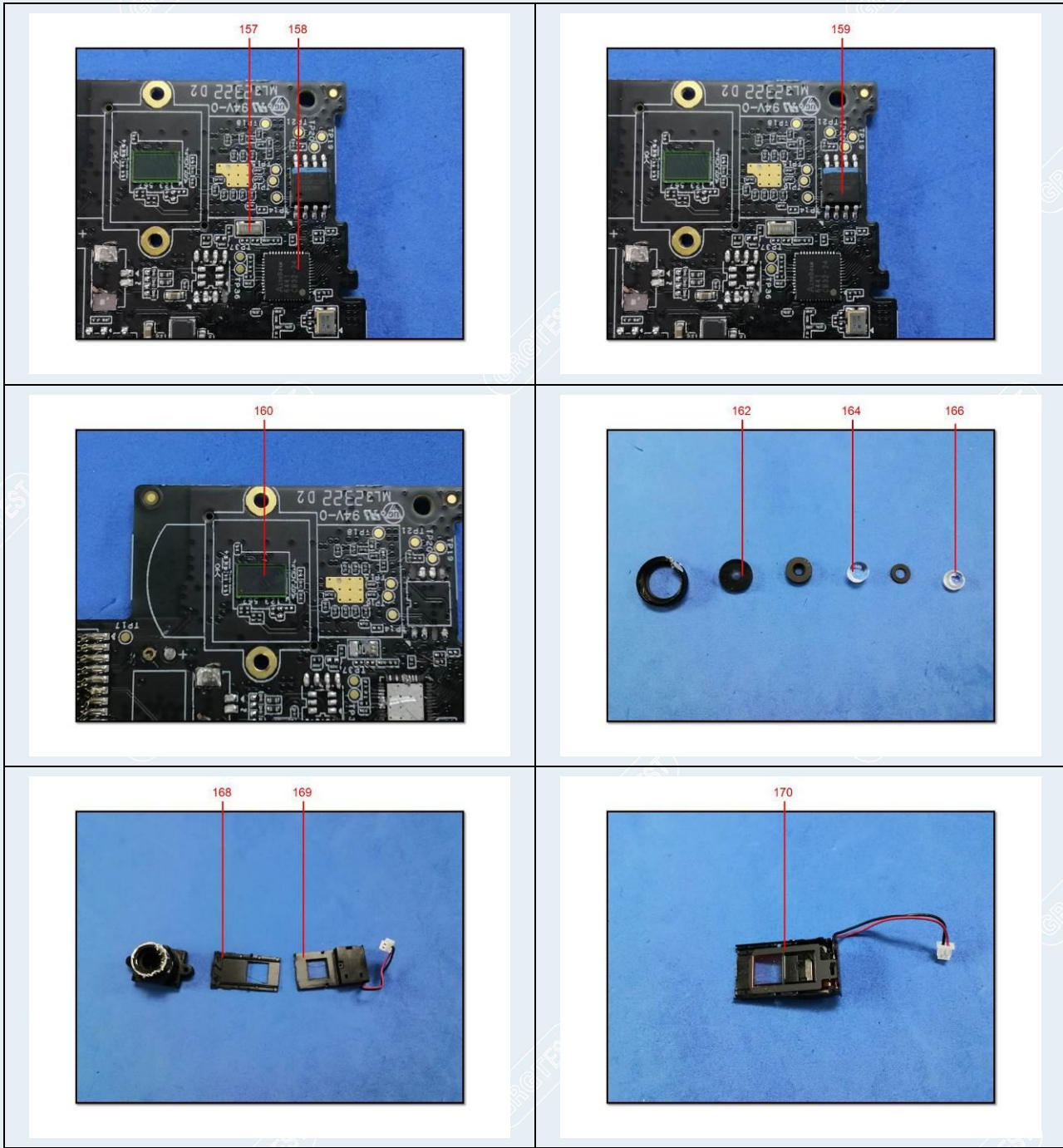
TEST REPORT

CheckCode:807941
Report No.:C202213022047E



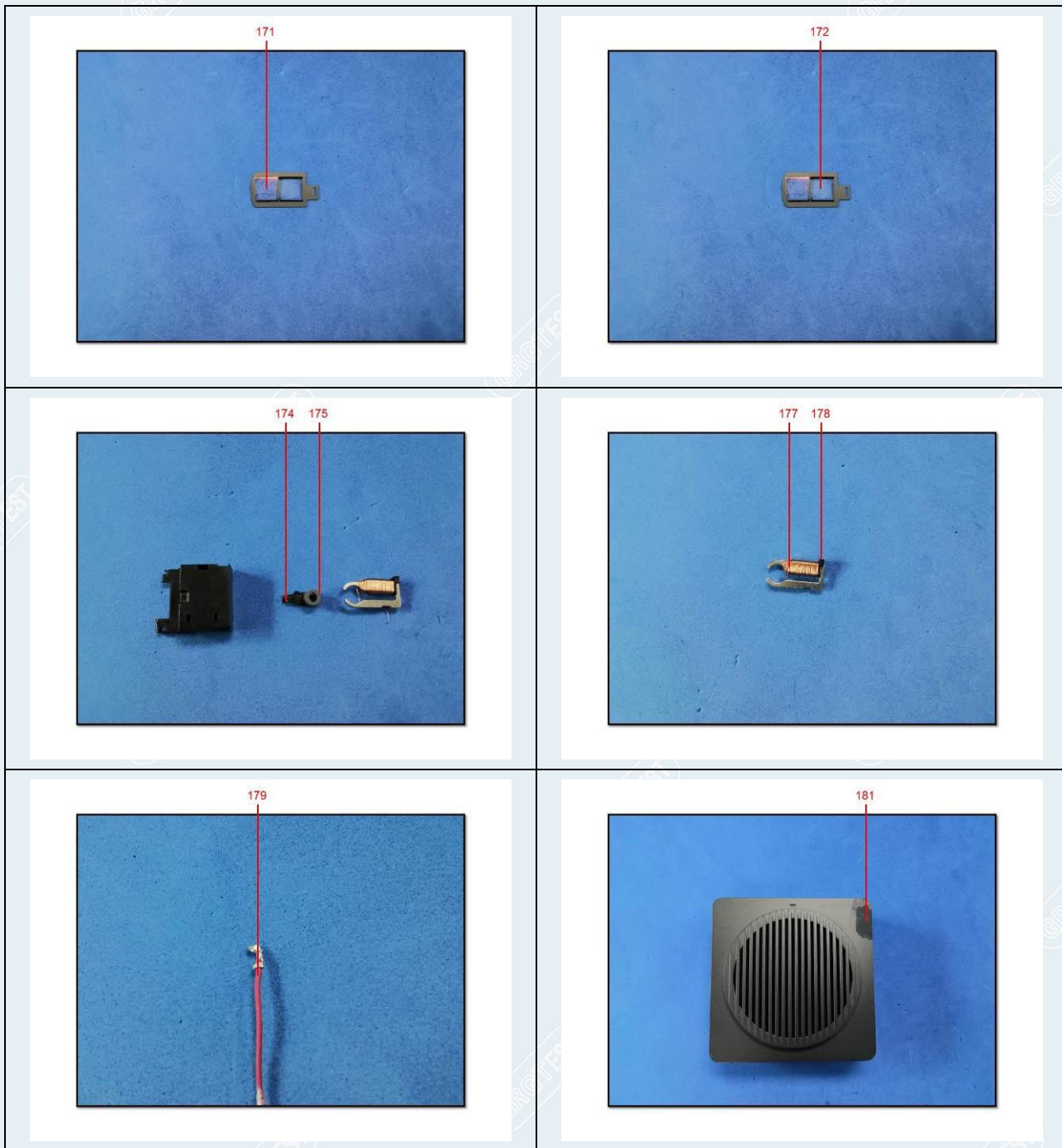
TEST REPORT

CheckCode:807941
Report No.:C202213022047E



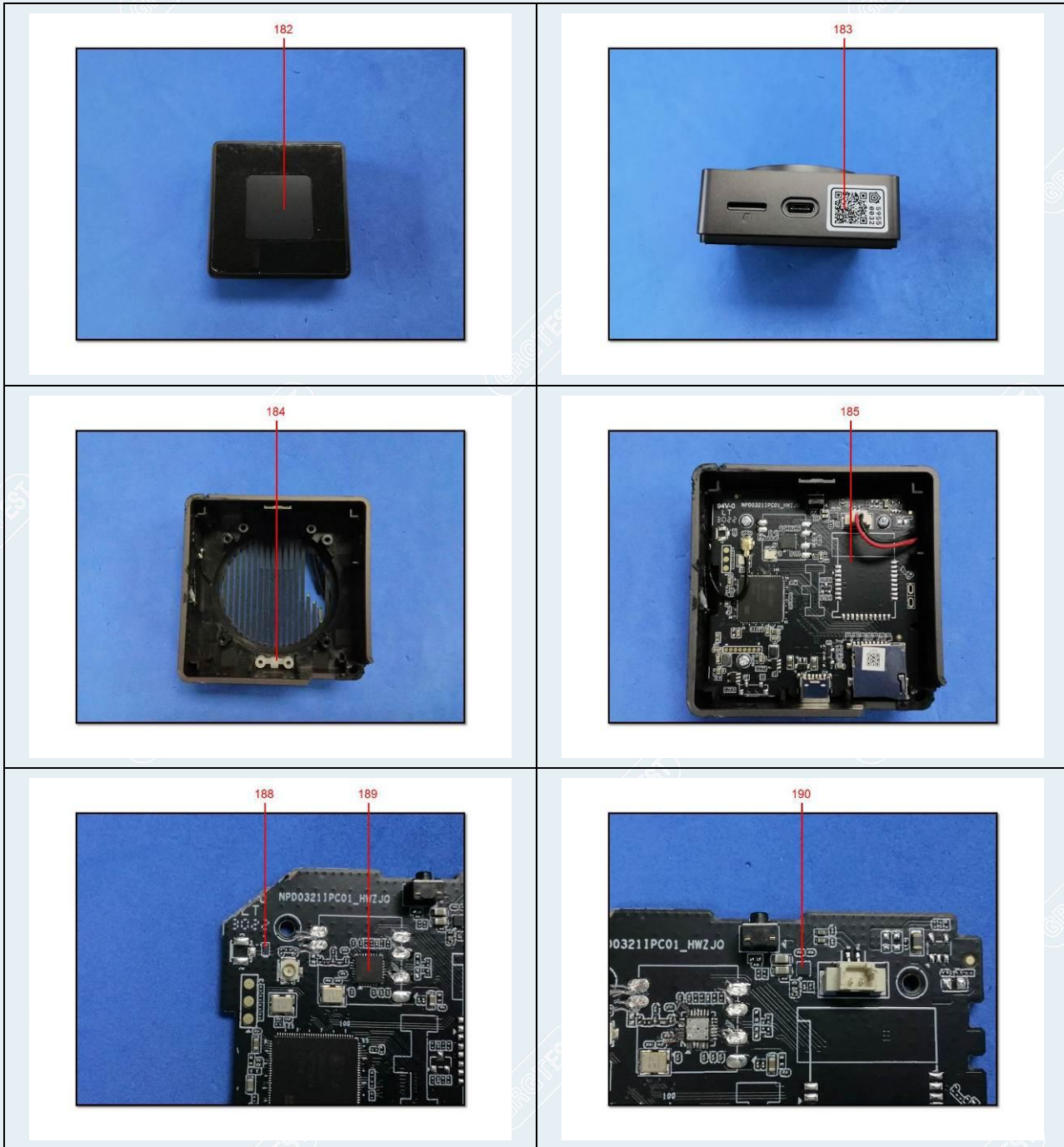
TEST REPORT

CheckCode:807941
Report No.:C202213022047E



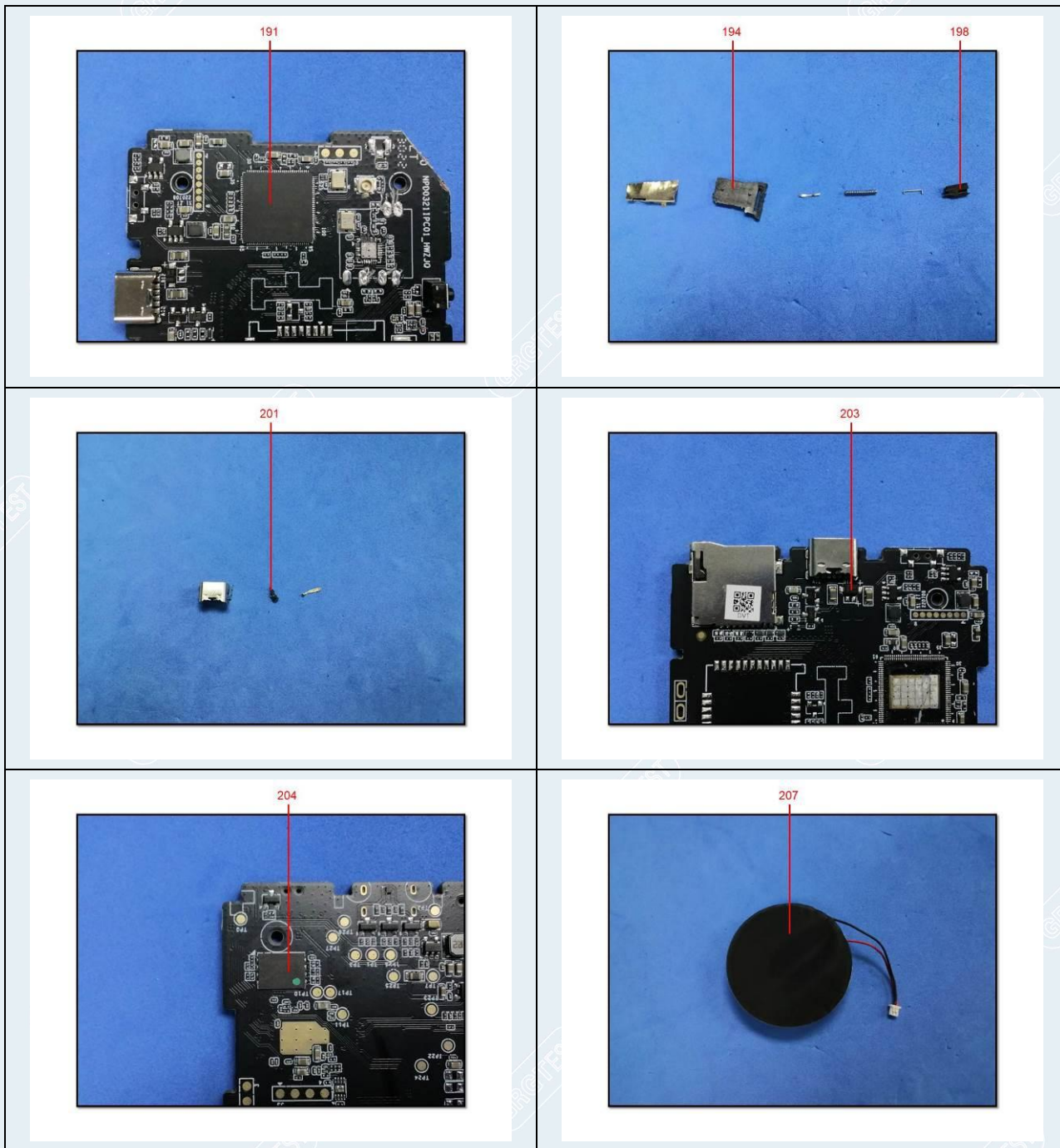
TEST REPORT

CheckCode:807941
Report No.:C202213022047E



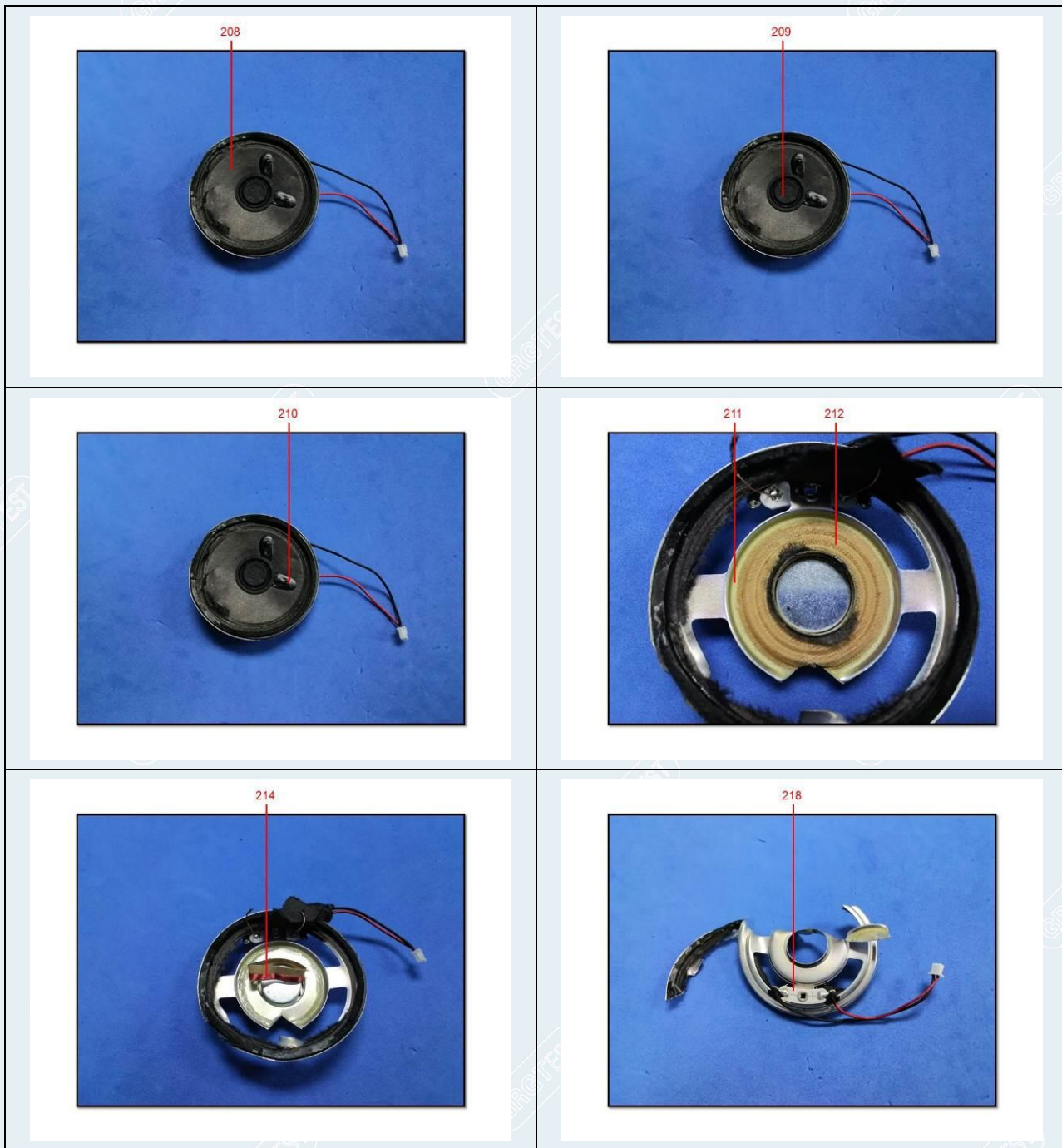
TEST REPORT

CheckCode:807941
Report No.:C202213022047E



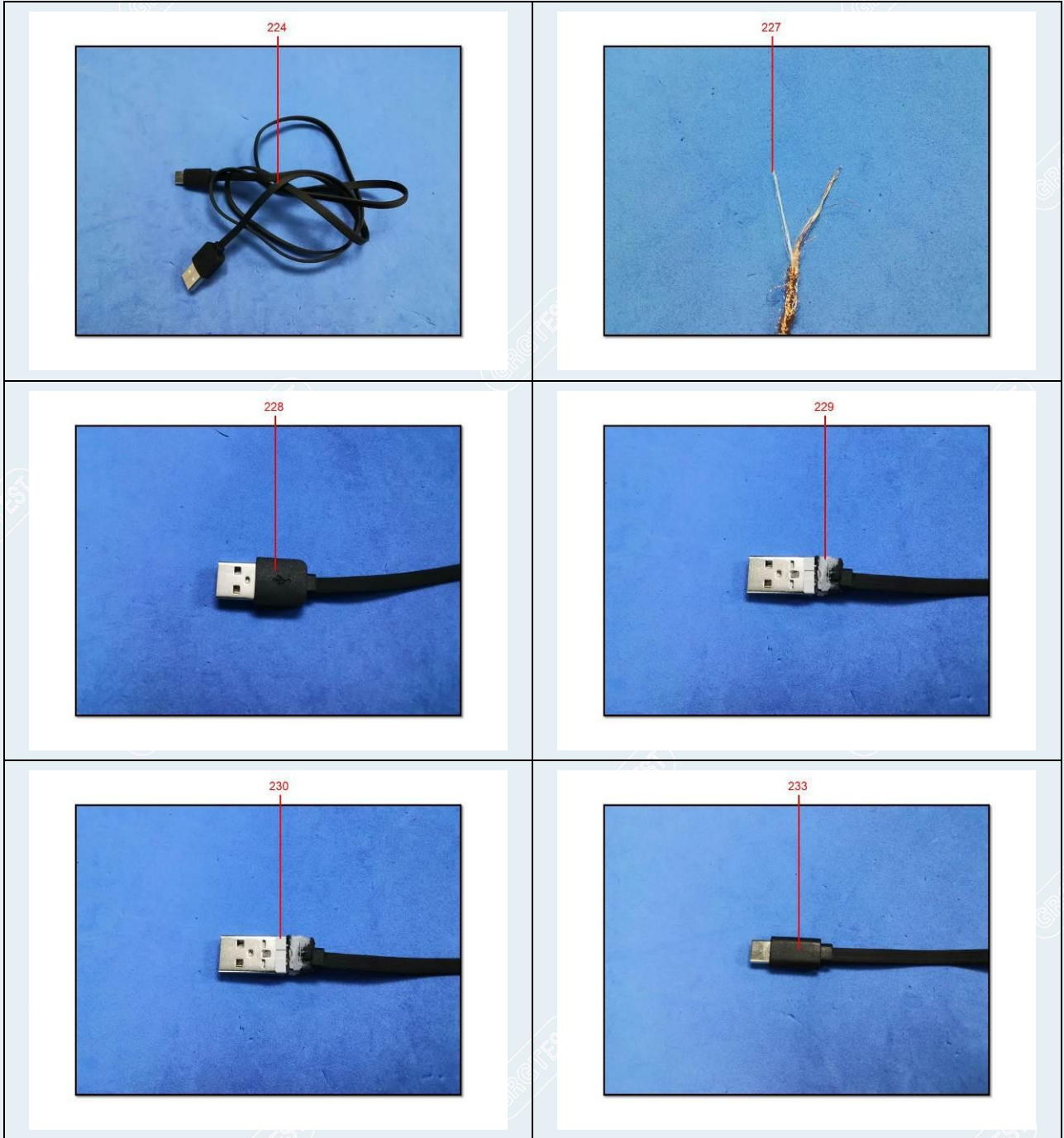
TEST REPORT

CheckCode:807941
Report No.:C202213022047E



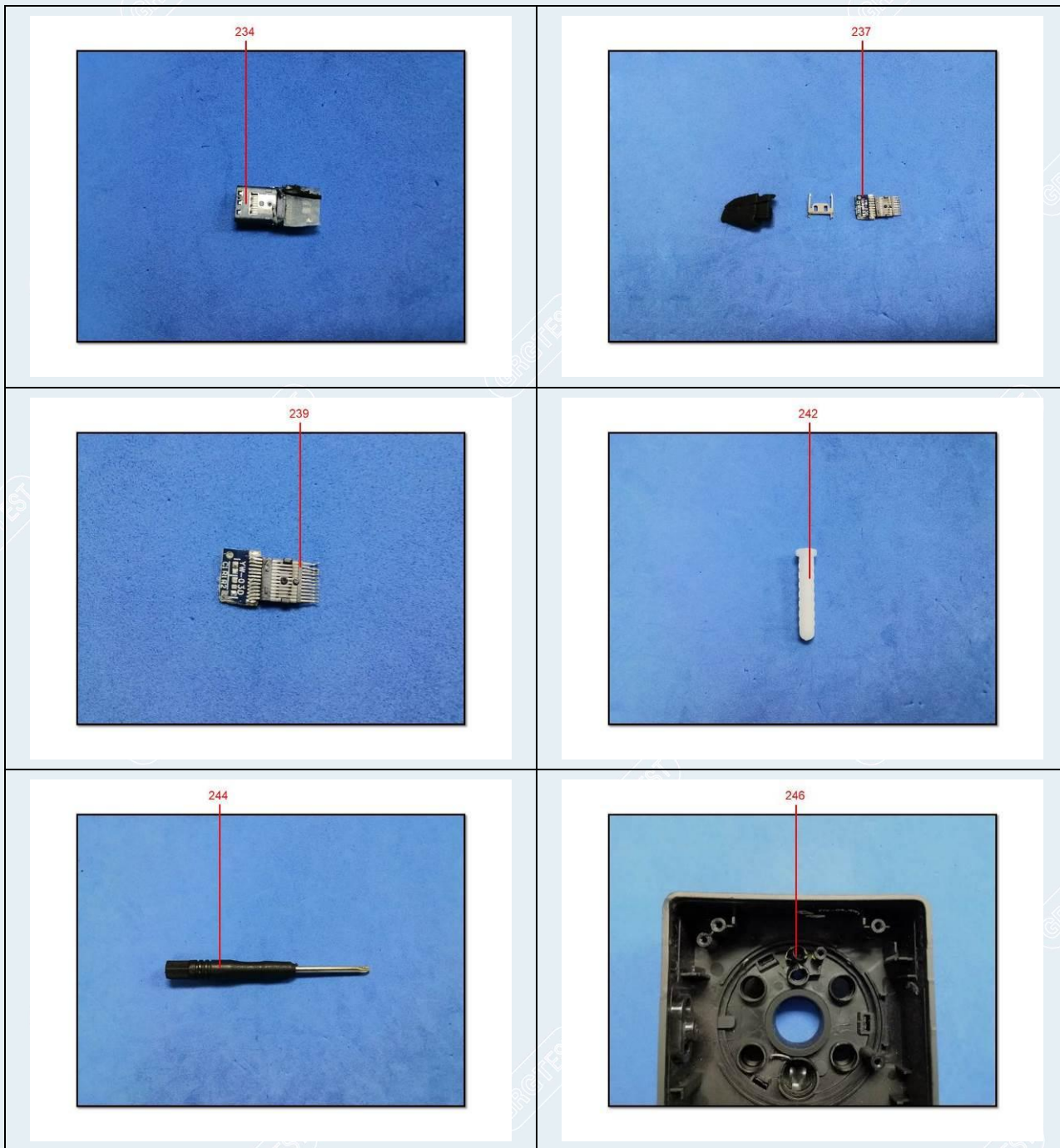
TEST REPORT

CheckCode:807941
Report No.:C202213022047E



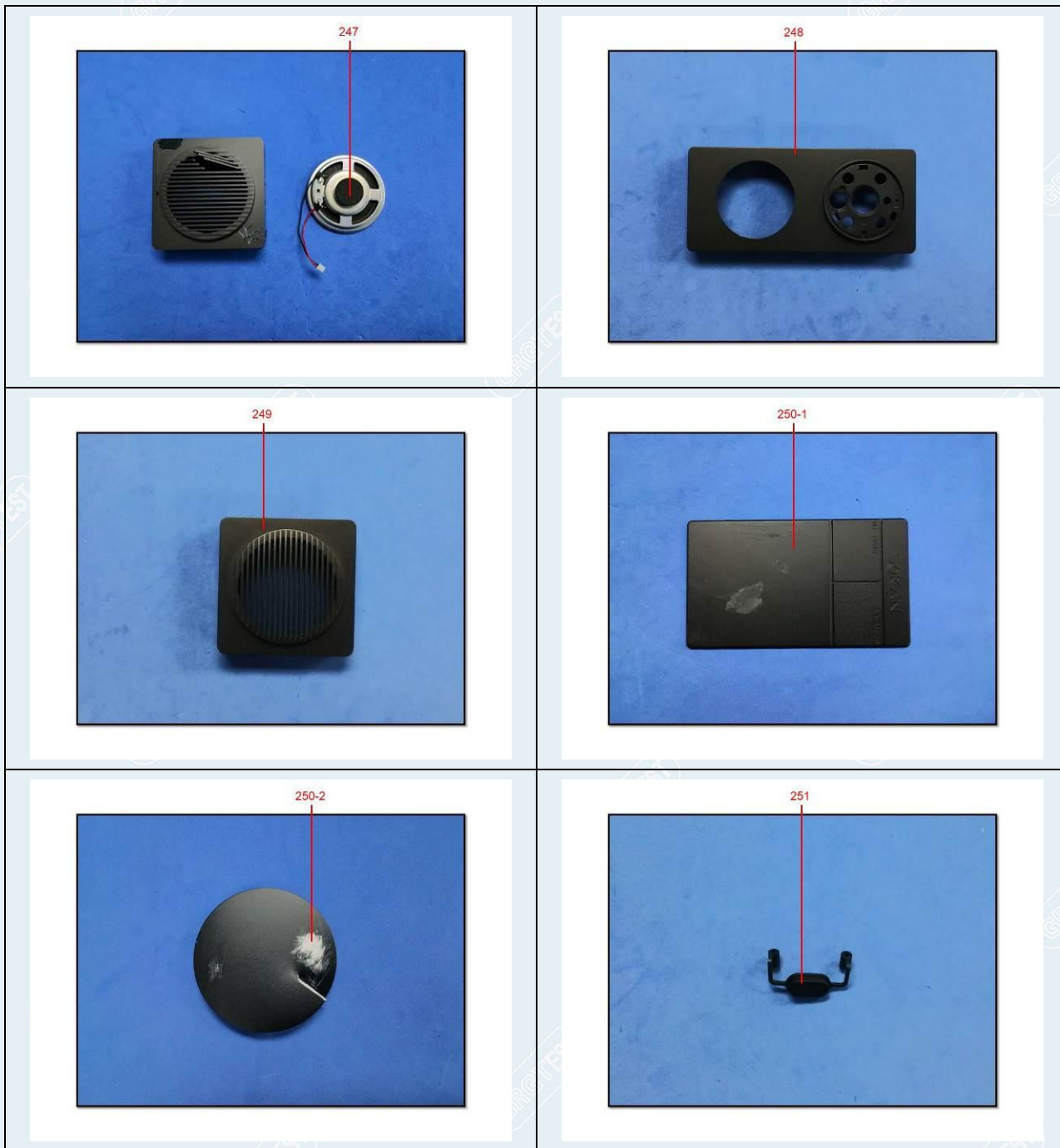
TEST REPORT

CheckCode:807941
Report No.:C202213022047E



TEST REPORT

CheckCode:807941
Report No.:C202213022047E



-----End of Report-----