

1 **EU TYPE EXAMINATION CERTIFICATE**

2 **Radio Equipment Directive 2014/53/EU – Annex III**

3 EU Type Examination      **ENW21RED1088**  
Certificate No.:

4 Equipment:                    **Wireless Remote Switch H1 (Double Rocker)**  
**Model: WRS-R02**

5 Manufacturer:                **Lumi United Technology Co., Ltd**

6 Address:                      **8th Floor, JinQi Wisdom Valley, No.1 Tangling Road, Liuxian Ave, Taoyuan Residential District, Nanshan District, Shenzhen, China**

7 This equipment and any acceptable variation thereto is specified in the schedule to this certificate and the documents therein referred to.

8 Element Materials Technology Portland-Evergreen, Inc. (hereafter referred to as Element Materials Technology) Notified Body number 0981 in accordance with Article 26 of the Council Directive 2014/53/EU of 16 April 2014, certifies that this equipment has been found to comply with the Essential Requirements relating to the design and construction of radio equipment given in the following Articles of the Directive: **3.1(a) - Health and safety, 3.1(b) - Electromagnetic compatibility, 3.2 – Radio spectrum.**

The examination and test results are recorded in the confidential reports:

**WTX20X11088157S, WTX20X11088153W-1, WTX20X11088153W-2, WTX20X11088153W-3.**

9 Compliance with the Essential Requirements, with the exception of those listed in section 19 of the schedule to this certificate, has been assured by compliance with:

<b>EN 300 328 V2.2.2 (2019-07)</b>	<b>EN 301 489-1 V2.2.3 (2019-11)</b>	<b>EN 62368-1:2014+A11:2017</b>
	<b>EN 301 489-17 V3.2.4 (2020-09)</b>	<b>EN 50663:2017</b>

10 This EU-Type Examination certificate relates only to the design and construction of the specified equipment in accordance with Directive 2014/53/EU. Further requirements of this Directive apply to the manufacture and supply of this equipment. These are not covered by this certificate.

11 This certificate and its schedules may only be reproduced in its entirety and without change. This certificate is issued in accordance with the rules of the Element Materials Technology Radio Certification Scheme and remains valid for only so long as the equipment conforms to the type described herein.

12 Any deviation to the design and construction of the specified equipment that is not certified by Element Materials Technology shall render this certificate invalid.



Eric Guo, Department Manager

Issue date:      2021-02-24

CSF301-US 5.0 Page 1 of 6

13 **SCHEDULE TO EU TYPE EXAMINATION CERTIFICATE**

14 **ENW21RED1088**

15 **General description of equipment or protective system included within the scope of this certificate**

The Aqara Wireless Remote Switch H1 (Double Rocker) is a new wireless remote switch. It supports single press in the high-speed click mode, and 7 functions in the multi-function mode including single press left button, single press right button, double press left button, double press right button, long press left button and long press right button. It is able to be placed or attached anywhere indoors. It also works with the Aqara hub and other Aqara smart devices to implement a variety of smart scenes with the use of the Aqara Home app and the Zigbee 3.0 wireless protocol.

16 **Technical description**

Frequency bands: 2405 – 2480 MHz  
Transmit power: 0.0117 W EIRP Maximum  
Channel spacing: 5 MHz  
Duty cycle: 33.3 %  
Type of modulation: OQPSK  
Type of antenna and gain: PCB Antenna, Gain <= 2 dBi  
Hardware version: T0  
Software version: 0.0.0\_0021

17 **Technical Documents describing the certified equipment**

The list of technical documents is given in Appendix A to this schedule.

18 <b>Test report No. (associated with this certificate issue):</b>	<b>Product Safety:</b>	<b>WTX20X11088157S</b>
	<b>RF Exposure:</b>	<b>WTX20X11088153W-2</b>
	<b>EMC:</b>	<b>WTX20X11088153W-3</b>
	<b>Radio:</b>	<b>WTX20X11088153W-1</b>

19 **Essential Requirements (Directive Article 3)**

Covered by application of the standards listed in section 9 of this certificate and the assessment conducted in the test report/s listed in section 8 of this certificate.

20 **“Restrictions on Use”, if any:**

None.

21 **“Routine tests”, if any:**

None.

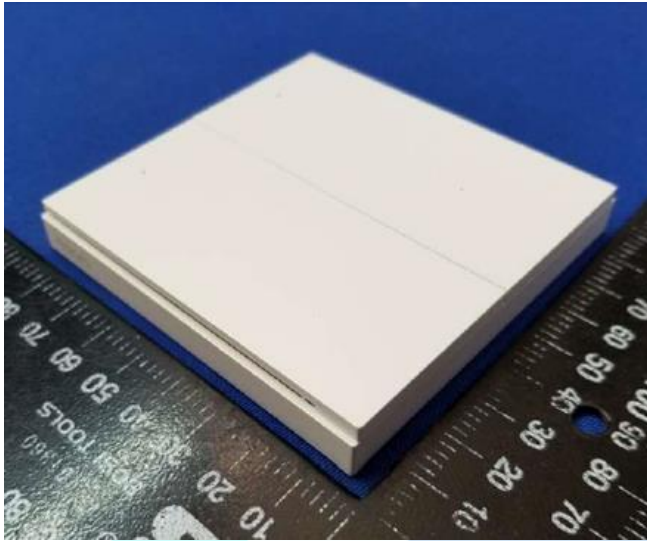
22 **Other information, if any:**

None.

**SCHEDULE TO EU TYPE EXAMINATION CERTIFICATE**  
**ENW21RED1088**

**23 Photographs**

WRS-R02:



**SCHEDULE TO EU TYPE EXAMINATION CERTIFICATE**

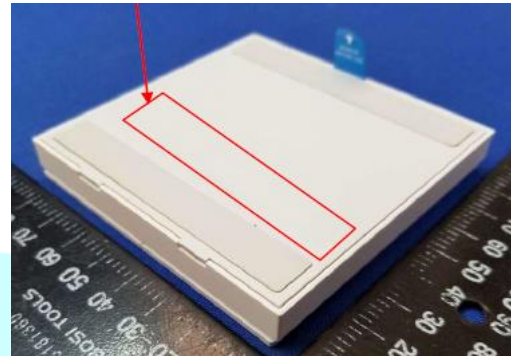
**ENW21RED1088**

**24 Details of markings**

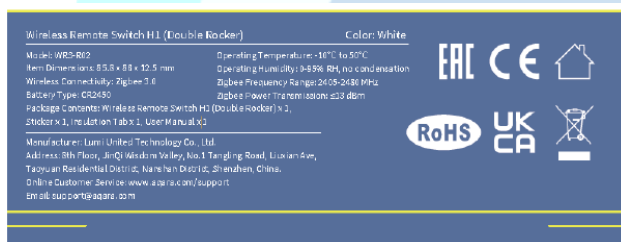
**Product Label:**



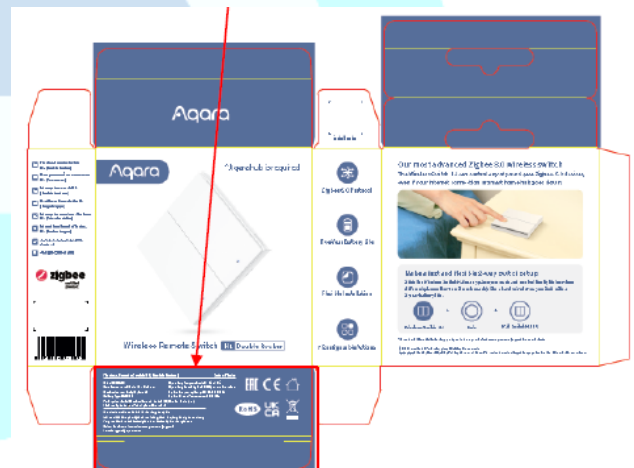
**Product Label Location:**



**Packaging Label:**



**Packaging Label Location:**



## SCHEDULE TO EU TYPE EXAMINATION CERTIFICATE

ENW21RED1088

### 25 Details of variations to this certificate

None.

### 26 Notes to CE marking

In respect of CE Marking, Element Materials Technology accepts no responsibility for the compliance of the equipment against all applicable Directives in all applications.

### 27 Notes to this certificate

Element Materials Technology certification reference: CN-SEMQ-0003.

Throughout this certificate, the date format yyyy-mm-dd (year-month-day) is used.

Notified Body 0981 is the designation for Element Materials Technology, Portland-Evergreen Inc..

### 28 Conditions for the validity of this certificate

This certificate remains valid for so long as:

- (i) The equipment listed in section 4 is manufactured in accordance with the technical documents listed in Appendix A of this certificate.
- (ii) The standards listed in section 9 of this certificate continue to satisfy the Essential Requirements relating to the design and construction of radio equipment given in the Articles of the Directive listed in section 8 of this certificate and the generally acknowledged state of the art (e.g. as determined by the publishers of those standards).

**SCHEDULE TO EU TYPE EXAMINATION CERTIFICATE**  
**ENW21RED1088**

**APPENDIX A - LIST OF TECHNICAL DOCUMENTS**

<b>Title:</b>	<b>Document/file name:</b>	<b>Rev. Level:</b>	<b>Issue date:</b>
Technical File	WRS-R02_CTF	Rev.00	2021-01-22

