

# TEST REPORT

**Report No. :** STS211022001001E

**Product :** Mobile Phone

**Model No. :** A55

**Applicant :** DOKE COMMUNICATION (HK) LIMITED.

**Address :** RM 1902 EASEY COMM BLDG 253-261 HENNESSY ROAD  
WANCHAI HONG KONG CHINA.

**Issued by :** Shenzhen NTEK Testing Technology Co., Ltd.

**Lab** 1/F, Building E, Fenda Science Park, Sanwei Community,

**Location :** Xixiang Street, Bao'an District, Shenzhen 518126 P.R. China

**Tel :** 400-800-6106, 0755-2320 0050 / 2320 0090



This test report consists of **63** pages in total. It may be duplicated completely for legal use with the approval of the applicant. It should not be reproduced except in full, without the written approval of our laboratory. The client should not use it to claim product endorsement by NTEK. The test results in the report only apply to the tested sample. The test report shall be invalid without all the signatures of testing engineers, reviewer and approver. Any objections must be raised to NTEK within 15 days since the date when the report is received. It will not be taken into consideration beyond this limit.

**TEST REPORT**

**IEC 62368-1**

**Audio/video, information and communication technology equipment**

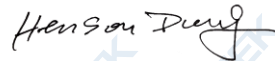
**Part 1: Safety requirements**

Report Number..... : STS211022001001E

Tested by (name + signature).....: Aby Chen



Approved by (name + signature) .....: Henson Dong



Date of issue..... : 2021-11-10

Testing Laboratory..... Shenzhen NTEK Testing Technology Co., Ltd.

Address..... 1/F, Building E, Fenda Science Park, Sanwei Community, Xixiang Street, Bao'an District, Shenzhen 518126 P.R. China

Applicant's name ..... : DOKE COMMUNICATION (HK) LIMITED.

Address..... : RM 1902 EASEY COMM BLDG 253-261 HENNESSY ROAD WANCHAI HONG KONG CHINA.

**Test specification:**

Standard ..... :  IEC 62368-1:2014 (Second Edition)  
 EN 62368-1:2014+A11:2017

Test procedure..... : CE Scheme

Non-standard test method ..... : N/A

Test Report Form No. .... : IEC62368\_1B

Test Report Form(s) Originator ..... : UL(US)

Master TRF ..... : 2014-03

**Copyright © 2014 Worldwide System for Conformity Testing and Certification of Electrotechnical Equipment and Components (IECEE), Geneva, Switzerland. All rights reserved.**

This publication may be reproduced in whole or in part for non-commercial purposes as long as the ENEE is acknowledged as copyright owner and source of the material. ENEE takes no responsibility for and will not assume liability for damages resulting from the reader's interpretation of the reproduced material due to its placement and context.

Test Item description ..... Mobile Phone

Trade Mark ..... Blackview

Manufacturer..... Shenzhen DOKE Electronic Co.,Ltd.

Manufacturer address..... 801, Building3, 7th Industrial Zone, Yulv Community, Yutang Road, Guangming District, Shenzhen, China.

Model/Type reference ..... A55

Ratings ..... Input: 5VDC, 1A

TEST ITEM PARTICULARS:	
Classification of use by .....	<input checked="" type="checkbox"/> Ordinary person <input type="checkbox"/> Instructed person <input type="checkbox"/> Skilled person <input checked="" type="checkbox"/> Children likely to be present
Supply Connection.....	<input type="checkbox"/> AC Mains <input type="checkbox"/> DC Mains <input checked="" type="checkbox"/> External Circuit - not Mains connected - <input checked="" type="checkbox"/> ES1 <input type="checkbox"/> ES2 <input type="checkbox"/> ES3
Supply % Tolerance .....	<input type="checkbox"/> +10%/-10% <input type="checkbox"/> +20%/-15% <input type="checkbox"/> +25%/-15% <input checked="" type="checkbox"/> None
Supply Connection – Type .....	<input type="checkbox"/> pluggable equipment type A - <input type="checkbox"/> non-detachable supply cord <input type="checkbox"/> appliance coupler <input type="checkbox"/> direct plug-in <input type="checkbox"/> mating connector <input type="checkbox"/> pluggable equipment type B - <input type="checkbox"/> non-detachable supply cord <input type="checkbox"/> appliance coupler <input type="checkbox"/> permanent connection <input type="checkbox"/> mating connector <input checked="" type="checkbox"/> other: <u>Micro USB connector</u>
Considered current rating of protective device as part of building or equipment installation .....	N/A (Not directly connected to mains) Installation location: <input type="checkbox"/> building; <input type="checkbox"/> equipment
Equipment mobility .....	<input checked="" type="checkbox"/> movable <input checked="" type="checkbox"/> hand-held <input checked="" type="checkbox"/> transportable <input type="checkbox"/> stationary <input type="checkbox"/> for building-in <input type="checkbox"/> direct plug-in <input type="checkbox"/> rack-mounting <input type="checkbox"/> wall-mounted
Over voltage category (OVC) .....	<input type="checkbox"/> OVC I <input type="checkbox"/> OVC II <input type="checkbox"/> OVC III <input type="checkbox"/> OVC IV <input checked="" type="checkbox"/> other: (Not directly connected to mains)
Class of equipment .....	<input type="checkbox"/> Class I <input type="checkbox"/> Class II <input checked="" type="checkbox"/> Class III
Access location .....	<input type="checkbox"/> restricted access location <input checked="" type="checkbox"/> N/A
Pollution degree (PD) .....	<input type="checkbox"/> PD 1 <input checked="" type="checkbox"/> PD 2 <input type="checkbox"/> PD 3
Manufacturer's specified maximum operating ambient:	40 °C
IP protection class .....	<input checked="" type="checkbox"/> IPX0 <input type="checkbox"/> IP__
Power Systems .....	<input type="checkbox"/> TN <input type="checkbox"/> TT <input type="checkbox"/> IT - 230 V <sub>L-L</sub>
Altitude during operation (m) .....	<input type="checkbox"/> 2000 m or less <input checked="" type="checkbox"/> 5000 m
Altitude of test laboratory (m) .....	<input type="checkbox"/> 2000 m or less <input checked="" type="checkbox"/> 500 m
Mass of equipment (kg) .....	<input checked="" type="checkbox"/> approx. 0.214kg

<b>POSSIBLE TEST CASE VERDICTS:</b>	
- test case does not apply to the test object.....:	N/A
- test object does meet the requirement .....	P (Pass)
- test object does not meet the requirement .....	F (Fail)
<b>TESTING:</b>	
Date of receipt of test item.....:	2021-10-25
Date (s) of performance of tests.....:	2021-10-29 to 2021-11-09

**GENERAL PRODUCT INFORMATION:**

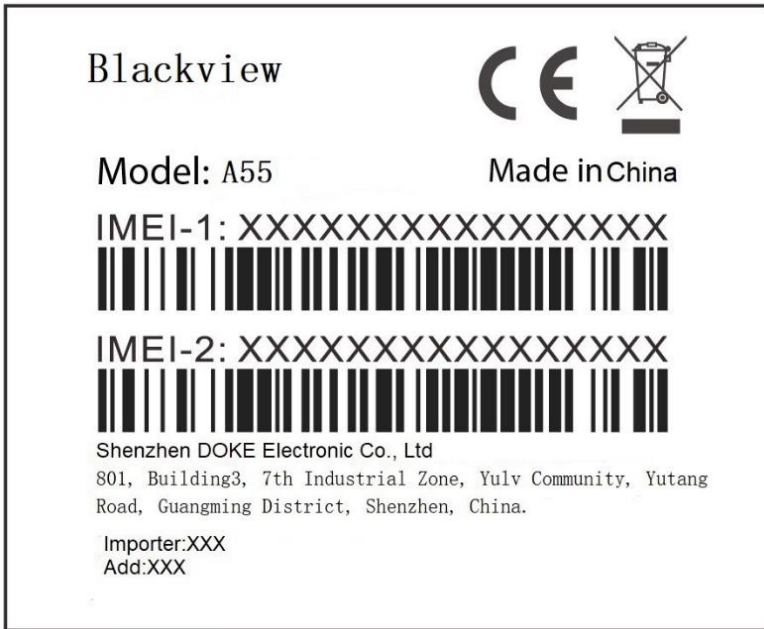
**Product Description –**

- The product is Mobile Phone, which supplied by a built-in Li-ion battery.
- The unit shall be charged by approved external approved adapter. The external power adapter rated parameter is “input: AC 100V-240V, 50/60Hz, 0.15A; output: DC 5V, 1A”.
- The maximum operating temperature is 40°C.

**Additional application considerations – (Considerations used to test a component or sub-assembly) –**

- N/A

**Copy of marking plate:**



**Remark:**

- The above markings are the minimum requirements required by the safety standard. For the final production samples, the additional markings which do not give rise to misunderstanding may be added.
- The CE marking and WEEE symbol (if any) should be at least 5.0 mm and 7.0 mm respectively in height.
- The importer shall indicate on the electrical equipment their name, registered trade name or registered trade mark and the postal address at which they can be contacted or, where that is not possible, on its packaging or in a document accompanying the electrical equipment.

<b>ENERGY SOURCE IDENTIFICATION AND CLASSIFICATION TABLE:</b>	
(Note 1: Identify the following six (6) energy source forms based on the origin of the energy.) (Note 2: The identified classification e.g., ES2, TS1, should be with respect to its ability to cause pain or injury on the body or its ability to ignite a combustible material. Any energy source can be declared Class 3 as a worse case classification e.g. PS3, ES3.	
<b>Electrically-caused injury (Clause 5):</b> (Note: Identify type of source, list sub-assembly or circuit designation and corresponding energy source classification) Example: +5 V dc input <span style="float: right;">ES1</span>	
Source of electrical energy	Corresponding classification (ES)
Internal circuits	ES1
Micro USB	ES1
<b>Electrically-caused fire (Clause 6):</b> (Note: List sub-assembly or circuit designation and corresponding energy source classification) Example: Battery pack (maximum 85 watts): <span style="float: right;">PS2</span>	
Source of power or PIS	Corresponding classification (PS)
Internal circuits	PS1
Battery pack/cell output	PS2(Resistive PIS)
<b>Injury caused by hazardous substances (Clause 7)</b> (Note: Specify hazardous chemicals, whether produces ozone or other chemical construction not addressed as part of the component evaluation.) Example: Liquid in filled component <span style="float: right;">Glycol</span>	
Source of hazardous substances	Corresponding chemical
Battery	Complied with annex M
<b>Mechanically-caused injury (Clause 8)</b> (Note: List moving part(s), fan, special installations, etc. & corresponding MS classification based on Table 35.) Example: Wall mount unit <span style="float: right;">MS2</span>	
Source of kinetic/mechanical energy	Corresponding classification (MS)
Sharp edges and corners of accessible parts	MS1
Product mass	MS1
<b>Thermal burn injury (Clause 9)</b> (Note: Identify the surface or support, and corresponding energy source classification based on type of part, location, operating temperature and contact time in Table 38.) Example: Hand-held scanner – thermoplastic enclosure <span style="float: right;">TS1</span>	
Source of thermal energy	Corresponding classification (TS)
Accessible parts	TS1
<b>Radiation (Clause 10)</b> (Note: List the types of radiation present in the product and the corresponding energy source classification.) Example: DVD – Class 1 Laser Product <span style="float: right;">RS1</span>	
Type of radiation	Corresponding classification (RS)
LED	RS1

ENERGY SOURCE IDENTIFICATION AND CLASSIFICATION TABLE:	
Acoustic	RS2
ENERGY SOURCE DIAGRAM	
Indicate which energy sources are included in the energy source diagram. Insert diagram below	
<input checked="" type="checkbox"/> ES <input checked="" type="checkbox"/> PS <input checked="" type="checkbox"/> MS <input checked="" type="checkbox"/> TS <input checked="" type="checkbox"/> RS	
Remark: N/A	

OVERVIEW OF EMPLOYED SAFEGUARDS				
Clause	Possible Hazard			
5.1	Electrically-caused injury			
Body Part (e.g. Ordinary)	Energy Source (ES3: Primary Filter circuit)	Safeguards		
		Basic	Supplementary	Reinforced (Enclosure)
Ordinary person, Skilled person	ES1: Internal circuits ES1: Micro USB	N/A	N/A	N/A
6.1	Electrically-caused fire			
Material part (e.g. mouse enclosure)	Energy Source (PS2: 100 Watt circuit)	Safeguards		
		Basic	Supplementary	Reinforced
Internal combustible material/ internal plastic enclosure	PS1: Internal circuits PS2: Battery pack/cell	1, No ignition occurred. 2, No parts exceeding 90% of its spontaneous ignition temperature.	1, PCB is complied with V-0 material. 2, All other components: at least V-2 except for mounted on V-0 material or small parts of combustible material. 3, Battery metal cover	N/A
7.1	Injury caused by hazardous substances			
Body Part (e.g., skilled)	Energy Source (hazardous material)	Safeguards		
		Basic	Supplementary	Reinforced
Battery pack	Complied with annex M	N/A	N/A	N/A
8.1	Mechanically-caused injury			
Body Part (e.g. Ordinary)	Energy Source (MS3: High Pressure Lamp)	Safeguards		
		Basic	Supplementary	Reinforced (Enclosure)
Ordinary person, Skilled person	MS1: Sharp edges and corners of accessible parts	N/A	N/A	N/A
Ordinary person, Skilled person	MS1: Product mass	N/A	N/A	N/A
9.1	Thermal Burn			
Body Part (e.g., Ordinary)	Energy Source (TS2)	Safeguards		
		Basic	Supplementary	Reinforced
Ordinary person, Skilled person	TS1: Accessible parts	N/A	N/A	N/A
10.1	Radiation			

Body Part (e.g., Ordinary)	Energy Source (Output from audio port)	Safeguards		
		Basic	Supplementary	Reinforced
Ordinary person, Skilled person	RS1: LED	N/A	N/A	N/A
Ordinary person, Skilled person	RS2: Acoustic	N/A	N/A	N/A
<b>Supplementary Information:</b> (1) See attached energy source diagram for additional details. (2) "N" – Normal Condition; "A" – Abnormal Condition; "S" Single Fault.				



IEC 62368-1			
Clause	Requirement + Test	Result - Remark	Verdict

<b>4</b>	<b>GENERAL REQUIREMENTS</b>		<b>P</b>
4.1.1	Acceptance of materials, components and subassemblies		P
4.1.2	Use of components	(See appended table 4.1.2)	P
4.1.3	Equipment design and construction		P
4.1.15	Markings and instructions.....:	(See Annex F)	P
4.4.4	Safeguard robustness		P
4.4.4.2	Steady force tests.....:	(See Annex T.4)	P
4.4.4.3	Drop tests.....:	(See Annex T.7)	P
4.4.4.4	Impact tests.....:		N/A
4.4.4.5	Internal accessible safeguard enclosure and barrier tests.....:	No such enclosure and barrier	N/A
4.4.4.6	Glass Impact tests.....:		N/A
4.4.4.7	Thermoplastic material tests.....:	(See Annex T.8)	P
4.4.4.8	Air comprising a safeguard.....:	Considered, but no such barrier or enclosure provided	N/A
4.4.4.9	Accessibility and safeguard effectiveness	All safeguards remain effective	P
4.5	Explosion		P
4.6	Fixing of conductors		N/A
4.6.1	Fix conductors not to defeat a safeguard		N/A
4.6.2	10 N force test applied to.....:		N/A
4.7	Equipment for direct insertion into mains socket - outlets	No such apparatus	N/A
4.7.2	Mains plug part complies with the relevant standard.....:		N/A
4.7.3	Torque (Nm).....:		N/A
4.8	Products containing coin/button cell batteries	No coin/button cell batteries used	N/A
4.8.2	Instructional safeguard		N/A
4.8.3	Battery Compartment Construction		N/A
	Means to reduce the possibility of children removing the battery.....:		—
4.8.4	Battery Compartment Mechanical Tests.....:		N/A
4.8.5	Battery Accessibility		N/A
4.9	Likelihood of fire or shock due to entry of conductive object.....:	No Openings	P

IEC 62368-1			
Clause	Requirement + Test	Result - Remark	Verdict
<b>5</b>	<b>ELECTRICALLY-CAUSED INJURY</b>		<b>P</b>
5.2.1	Electrical energy source classifications..... :	(See appended table 5.2)	P
5.2.2	ES1, ES2 and ES3 limits		P
5.2.2.2	Steady-state voltage and current..... :	(See appended table 5.2)	P
5.2.2.3	Capacitance limits .....		N/A
5.2.2.4	Single pulse limits .....	No single pulse introduced	N/A
5.2.2.5	Limits for repetitive pulses .....	No repetitive pulses introduced	N/A
5.2.2.6	Ringing signals .....	No means for connection to telephone network and no ringing signal generated	N/A
5.2.2.7	Audio signals .....		N/A
5.3	Protection against electrical energy sources	All internal circuits considered ES1	N/A
5.3.1	General Requirements for accessible parts to ordinary, instructed and skilled persons		N/A
5.3.2.1	Accessibility to electrical energy sources and safeguards		N/A
5.3.2.2	Contact requirements		N/A
	a) Test with test probe from Annex V .....		N/A
	b) Electric strength test potential (V) .....		N/A
	c) Air gap (mm) .....		N/A
5.3.2.4	Terminals for connecting stripped wire		N/A
5.4	Insulation materials and requirements		P
5.4.1.2	Properties of insulating material		P
5.4.1.3	Humidity conditioning .....		N/A
5.4.1.4	Maximum operating temperature for insulating materials .....	(See appended table 5.4.1.4)	P
5.4.1.5	Pollution degree .....	2	—
5.4.1.5.2	Test for pollution degree 1 environment and for an insulating compound		N/A
5.4.1.5.3	Thermal cycling		N/A
5.4.1.6	Insulation in transformers with varying dimensions		N/A
5.4.1.7	Insulation in circuits generating starting pulses		N/A
5.4.1.8	Determination of working voltage		N/A
5.4.1.9	Insulating surfaces		N/A
5.4.1.10	Thermoplastic parts on which conductive metallic parts are directly mounted		N/A
5.4.1.10.2	Vicat softening temperature..... :		N/A

IEC 62368-1			
Clause	Requirement + Test	Result - Remark	Verdict
5.4.1.10.3	Ball pressure .....		N/A
5.4.2	Clearances		N/A
5.4.2.2	Determining clearance using peak working voltage		N/A
5.4.2.3	Determining clearance using required withstand voltage .....		N/A
	a) a.c. mains transient voltage .....		—
	b) d.c. mains transient voltage .....		—
	c) external circuit transient voltage .....		—
	d) transient voltage determined by measurement:		—
5.4.2.4	Determining the adequacy of a clearance using an electric strength test		N/A
5.4.2.5	Multiplication factors for clearances and test voltages .....		N/A
5.4.3	Creepage distances .....		N/A
5.4.3.1	General		N/A
5.4.3.3	Material Group .....		—
5.4.4	Solid insulation		N/A
5.4.4.2	Minimum distance through insulation .....		N/A
5.4.4.3	Insulation compound forming solid insulation		N/A
5.4.4.4	Solid insulation in semiconductor devices		N/A
5.4.4.5	Cemented joints		N/A
5.4.4.6	Thin sheet material		N/A
5.4.4.6.1	General requirements		N/A
5.4.4.6.2	Separable thin sheet material		N/A
	Number of layers (pcs) .....		N/A
5.4.4.6.3	Non-separable thin sheet material		N/A
5.4.4.6.4	Standard test procedure for non-separable thin sheet material .....		N/A
5.4.4.6.5	Mandrel test		N/A
5.4.4.7	Solid insulation in wound components		N/A
5.4.4.9	Solid insulation at frequencies >30 kHz .....		N/A
5.4.5	Antenna terminal insulation	No such terminal	N/A
5.4.5.1	General		N/A
5.4.5.2	Voltage surge test		N/A
	Insulation resistance (MΩ).....		—

IEC 62368-1			
Clause	Requirement + Test	Result - Remark	Verdict
5.4.6	Insulation of internal wire as part of supplementary safeguard .....		N/A
5.4.7	Tests for semiconductor components and for cemented joints		N/A
5.4.8	Humidity conditioning		N/A
	Relative humidity (%).....		—
	Temperature (°C) .....		—
	Duration (h) .....		—
5.4.9	Electric strength test .....		N/A
5.4.9.1	Test procedure for a solid insulation type test		N/A
5.4.9.2	Test procedure for routine tests		N/A
5.4.10	Protection against transient voltages between external circuit	No transient voltage from external circuit	N/A
5.4.10.1	Parts and circuits separated from external circuits		N/A
5.4.10.2	Test methods		N/A
5.4.10.2.1	General		N/A
5.4.10.2.2	Impulse test .....		N/A
5.4.10.2.3	Steady-state test.....		N/A
5.4.11	Insulation between external circuits and earthed circuitry .....	No such external circuit	N/A
5.4.11.1	Exceptions to separation between external circuits and earth		N/A
5.4.11.2	Requirements		N/A
	Rated operating voltage $U_{op}$ (V).....		—
	Nominal voltage $U_{peak}$ (V).....		—
	Max increase due to variation $U_{sp}$ .....		—
	Max increase due to ageing $\Delta U_{sa}$ .....		—
	$U_{op} = U_{peak} + \Delta U_{sp} + \Delta U_{sa}$ .....		—
5.5	Components as safeguards		
5.5.1	General		N/A
5.5.2	Capacitors and RC units		N/A
5.5.2.1	General requirement		N/A
5.5.2.2	Safeguards against capacitor discharge after disconnection of a connector.....		N/A
5.5.3	Transformers		N/A
5.5.4	Optocouplers		N/A

IEC 62368-1			
Clause	Requirement + Test	Result - Remark	Verdict
5.5.5	Relays		N/A
5.5.6	Resistors		N/A
5.5.7	SPD's		N/A
5.5.7.1	Use of an SPD connected to reliable earthing		N/A
5.5.7.2	Use of an SPD between mains and protective earth		N/A
5.5.8	Insulation between the mains and external circuit consisting of a coaxial cable.....:		N/A
5.6	Protective conductor		N/A
5.6.2	Requirement for protective conductors		N/A
5.6.2.1	General requirements		N/A
5.6.2.2	Colour of insulation		N/A
5.6.3	Requirement for protective earthing conductors		N/A
	Protective earthing conductor size (mm <sup>2</sup> ) .....		—
5.6.4	Requirement for protective bonding conductors		N/A
5.6.4.1	Protective bonding conductors		N/A
	Protective bonding conductor size (mm <sup>2</sup> ).....:		—
5.6.4.2	Protective current rating (A) .....		—
5.6.4.3	Current limiting and overcurrent protective devices		N/A
5.6.5	Terminals for protective conductors		N/A
5.6.5.1	Requirement		N/A
	Conductor size (mm <sup>2</sup> ), nominal thread diameter (mm). .....		N/A
5.6.5.2	Corrosion		N/A
5.6.6	Resistance of the protective system		N/A
5.6.6.1	Requirements		N/A
5.6.6.2	Test Method Resistance (Ω).....:		N/A
5.6.7	Reliable earthing		N/A
5.7	Prospective touch voltage, touch current and protective conductor current		N/A
5.7.2	Measuring devices and networks		N/A
5.7.2.1	Measurement of touch current .....		N/A
5.7.2.2	Measurement of prospective touch voltage		N/A
5.7.3	Equipment set-up, supply connections and earth connections		N/A

IEC 62368-1			
Clause	Requirement + Test	Result - Remark	Verdict
	System of interconnected equipment (separate connections/single connection) .....		—
	Multiple connections to mains (one connection at a time/simultaneous connections) .....		—
5.7.4	Earthed conductive accessible parts .....		N/A
5.7.5	Protective conductor current		N/A
	Supply Voltage (V) .....		—
	Measured current (mA) .....		—
	Instructional Safeguard .....		N/A
5.7.6	Prospective touch voltage and touch current due to external circuits		N/A
5.7.6.1	Touch current from coaxial cables		N/A
5.7.6.2	Prospective touch voltage and touch current from external circuits		N/A
5.7.7	Summation of touch currents from external circuits	No such external circuits	N/A
	a) Equipment with earthed external circuits Measured current (mA) .....		N/A
	b) Equipment whose external circuits are not referenced to earth. Measured current (mA) .....		N/A

<b>6</b>	<b>ELECTRICALLY- CAUSED FIRE</b>		<b>P</b>
6.2	Classification of power sources (PS) and potential ignition sources (PIS)		P
6.2.2	Power source circuit classifications		P
6.2.2.1	General		P
6.2.2.2	Power measurement for worst-case load fault ... :	(See appended table 6.2.2)	P
6.2.2.3	Power measurement for worst-case power source fault .....	(See appended table 6.2.2)	P
6.2.2.4	PS1 .....		P
6.2.2.5	PS2 .....	(See appended table 6.2.2)	P
6.2.2.6	PS3 .....		N/A
6.2.3	Classification of potential ignition sources		P
6.2.3.1	Arcing PIS .....		N/A
6.2.3.2	Resistive PIS .....	(See appended table 6.2.3.2)	P
6.3	Safeguards against fire under normal operating and abnormal operating conditions		P
6.3.1 (a)	No ignition and attainable temperature value less than 90 % defined by ISO 871 or less than 300 °C for unknown materials .....	(See appended table 5.4.1.5, 6.3.2, 9.0, B.2.6)	P

IEC 62368-1			
Clause	Requirement + Test	Result - Remark	Verdict
6.3.1 (b)	Combustible materials outside fire enclosure		N/A
6.4	Safeguards against fire under single fault conditions		P
6.4.1	Safeguard Method	Method of control fire spread used	P
6.4.2	Reduction of the likelihood of ignition under single fault conditions in PS1 circuits		N/A
6.4.3	Reduction of the likelihood of ignition under single fault conditions in PS2 and PS3 circuits		N/A
6.4.3.1	General		N/A
6.4.3.2	Supplementary Safeguards		N/A
	Special conditions if conductors on printed boards are opened or peeled		N/A
6.4.3.3	Single Fault Conditions .....		N/A
	Special conditions for temperature limited by fuse		N/A
6.4.4	Control of fire spread in PS1 circuits	PCB: V-0;	P
6.4.5	Control of fire spread in PS2 circuits		P
6.4.5.2	Supplementary safeguards .....	Battery: metal cover	P
6.4.6	Control of fire spread in PS3 circuit		N/A
6.4.7	Separation of combustible materials from a PIS		P
6.4.7.1	General .....		P
6.4.7.2	Separation by distance		N/A
6.4.7.3	Separation by a fire barrier		P
6.4.8	Fire enclosures and fire barriers		P
6.4.8.1	Fire enclosure and fire barrier material properties	Battery: metal cover	P
6.4.8.2.1	Requirements for a fire barrier		P
6.4.8.2.2	Requirements for a fire enclosure	Battery: metal cover	P
6.4.8.3	Constructional requirements for a fire enclosure and a fire barrier		P
6.4.8.3.1	Fire enclosure and fire barrier openings	No openings on the fire enclosure.	N/A
6.4.8.3.2	Fire barrier dimensions		N/A
6.4.8.3.3	Top Openings in Fire Enclosure: dimensions (mm) .....	No opening	N/A
	Needle Flame test		N/A
6.4.8.3.4	Bottom Openings in Fire Enclosure, condition met a), b) and/or c) dimensions (mm) .....		N/A
	Flammability tests for the bottom of a fire enclosure .....		N/A

IEC 62368-1			
Clause	Requirement + Test	Result - Remark	Verdict
6.4.8.3.5	Integrity of the fire enclosure, condition met: a), b) or c) .....		N/A
6.4.8.4	Separation of PIS from fire enclosure and fire barrier distance (mm) or flammability rating .....	Battery: metal cover	P
6.5	Internal and external wiring		P
6.5.1	Requirements		P
6.5.2	Cross-sectional area (mm <sup>2</sup> ) .....	(See appended table 4.1.2)	—
6.5.3	Requirements for interconnection to building wiring .....		N/A
6.6	Safeguards against fire due to connection to additional equipment		N/A
	External port limited to PS2 or complies with Clause Q.1		N/A

7	INJURY CAUSED BY HAZARDOUS SUBSTANCES		P
7.2	Reduction of exposure to hazardous substances	No such hazardous substances	N/A
7.3	Ozone exposure	No ozone production	N/A
7.4	Use of personal safeguards (PPE)		N/A
	Personal safeguards and instructions .....		—
7.5	Use of instructional safeguards and instructions		N/A
	Instructional safeguard (ISO 7010) .....		—
7.6	Batteries.....	(See appended tables Annex M)	P

8	MECHANICALLY-CAUSED INJURY		P
8.1	General		P
8.2	Mechanical energy source classifications		P
8.3	Safeguards against mechanical energy sources		P
8.4	Safeguards against parts with sharp edges and corners		P
8.4.1	Safeguards	MS1 classification	N/A
8.5	Safeguards against moving parts		N/A
8.5.1	MS2 or MS3 part required to be accessible for the function of the equipment		N/A
8.5.2	Instructional Safeguard.....		—
8.5.4	Special categories of equipment comprising moving parts		N/A




IEC 62368-1			
Clause	Requirement + Test	Result - Remark	Verdict
8.5.4.1	Large data storage equipment		N/A
8.5.4.2	Equipment having electromechanical device for destruction of media		N/A
8.5.4.2.1	Safeguards and Safety Interlocks .....		N/A
8.5.4.2.2	Instructional safeguards against moving parts		N/A
	Instructional Safeguard .....		—
8.5.4.2.3	Disconnection from the supply		N/A
8.5.4.2.4	Probe type and force (N) .....		N/A
8.5.5	High Pressure Lamps		N/A
8.5.5.1	Energy Source Classification		N/A
8.5.5.2	High Pressure Lamp Explosion Test.....		N/A
8.6	Stability	Mass < 7kg	N/A
8.6.1	Product classification	MS1	N/A
	Instructional Safeguard .....		—
8.6.2	Static stability		N/A
8.6.2.2	Static stability test		N/A
	Applied Force .....		—
8.6.2.3	Downward Force Test		N/A
8.6.3	Relocation stability test		N/A
	Unit configuration during 10° tilt.....		—
8.6.4	Glass slide test		N/A
8.6.5	Horizontal force test (Applied Force).....		N/A
	Position of feet or movable parts .....		—
8.7	Equipment mounted to wall or ceiling		N/A
8.7.1	Mounting Means (Length of screws (mm) and mounting surface) .....		N/A
8.7.2	Direction and applied force .....		N/A
8.8	Handles strength		N/A
8.8.1	Classification		N/A
8.8.2	Applied Force .....		N/A
8.9	Wheels or casters attachment requirements		N/A
8.9.1	Classification		N/A
8.9.2	Applied force .....		—
8.10	Carts, stands and similar carriers		N/A

IEC 62368-1			
Clause	Requirement + Test	Result - Remark	Verdict
8.10.1	General		N/A
8.10.2	Marking and instructions		N/A
	Instructional Safeguard.....:		—
8.10.3	Cart, stand or carrier loading test and compliance		N/A
	Applied force.....:		—
8.10.4	Cart, stand or carrier impact test		N/A
8.10.5	Mechanical stability		N/A
	Applied horizontal force (N).....:		—
8.10.6	Thermoplastic temperature stability (°C).....:		N/A
8.11	Mounting means for rack mounted equipment		N/A
8.11.1	General		N/A
8.11.2	Product Classification		N/A
8.11.3	Mechanical strength test, variable <i>N</i> .....:		N/A
8.11.4	Mechanical strength test 250N, including end stops		N/A
8.12	Telescoping or rod antennas.....		N/A
	Button/Ball diameter (mm).....:		—

9	THERMAL BURN INJURY		P
9.2	Thermal energy source classifications	TS1: accessible parts	P
9.3	Safeguard against thermal energy sources		N/A
9.4	Requirements for safeguards		N/A
9.4.1	Equipment safeguard		N/A
9.4.2	Instructional safeguard.....:		N/A

10	RADIATION		P
10.2	Radiation energy source classification		P
10.2.1	General classification		P
10.3	Protection against laser radiation		N/A
	Laser radiation that exists equipment:		—
	Normal, abnormal, single-fault.....:		N/A
	Instructional safeguard.....:		—
	Tool.....:		—
10.4	Protection against visible, infrared, and UV radiation	LED system unit used.	P

IEC 62368-1			
Clause	Requirement + Test	Result - Remark	Verdict
10.4.1	General		P
10.4.1.a)	RS3 for Ordinary and instructed persons .....		N/A
10.4.1.b)	RS3 accessible to a skilled person.....		N/A
	Personal safeguard (PPE) instructional safeguard.....		—
10.4.1.c)	Equipment visible, IR, UV does not exceed RS1.:	LED system unit comply with RS1	P
10.4.1.d)	Normal, abnormal, single-fault conditions .....	Exempt	P
10.4.1.e)	Enclosure material employed as safeguard is opaque.....		N/A
10.4.1.f)	UV attenuation.....		N/A
10.4.1.g)	Materials resistant to degradation UV .....		N/A
10.4.1.h)	Enclosure containment of optical radiation.....		N/A
10.4.1.i)	Exempt Group under normal operating conditions.....		P
10.4.2	Instructional safeguard .....		N/A
10.5	Protection against x-radiation		N/A
10.5.1	X- radiation energy source that exists equipment:		N/A
	Normal, abnormal, single fault conditions		N/A
	Equipment safeguards.....		N/A
	Instructional safeguard for skilled person.....		N/A
10.5.3	Most unfavourable supply voltage to give maximum radiation .....		—
	Abnormal and single-fault condition .....		N/A
	Maximum radiation (pA/kg).....		N/A
10.6	Protection against acoustic energy sources		P
10.6.1	General		P
10.6.2	Classification	RS2	P
	Acoustic output, dB(A).....		P
	Output voltage, unweighted r.m.s.....	Maximum volume: Right: 60.8mV; Left:60.1mV Warning: Right: 19.2mV; Left: 18.6mV	P
10.6.4	Protection of persons		P
	Instructional safeguards .....	1. Symbol  ; 2. "high sound pressure" or equivalent wording; 3. "hearing damage risk" or equivalent	P

IEC 62368-1			
Clause	Requirement + Test	Result - Remark	Verdict
		wording; 4. "do not listen at high volume levels for long periods" or equivalent wording.	
	Equipment safeguard prevent ordinary person to RS2..... :	Automatically return to RS1 level when the power is switched off.	—
	Means to actively inform user of increase sound pressure..... :	Warning: hearing damage risk or equivalent wording	—
	Equipment safeguard prevent ordinary person to RS2..... :	After 20h the acoustic output not exceeding RS1	—
10.6.5	Requirements for listening devices (headphones, earphones, etc.)		N/A
10.6.5.1	Corded passive listening devices with analog input		N/A
	Input voltage with 94 dB(A) $L_{Aeq}$ acoustic pressure output..... :		—
10.6.5.2	Corded listening devices with digital input		N/A
	Maximum dB(A)..... :		—
10.6.5.3	Cordless listening device		N/A
	Maximum dB(A)..... :		—

<b>B</b>	<b>NORMAL OPERATING CONDITION TESTS, ABNORMAL OPERATING CONDITION TESTS AND SINGLE FAULT CONDITION TESTS</b>		<b>P</b>
B.2	Normal Operating Conditions		P
B.2.1	General requirements..... :	(See summary of testing & appended test tables)	P
	Audio Amplifiers and equipment with audio amplifiers..... :		N/A
B.2.3	Supply voltage and tolerances	(See appended table B.2.5)	P
B.2.5	Input test..... :	(See appended table B.2.5)	P
B.3	Simulated abnormal operating conditions		N/A
B.3.1	General requirements..... :		N/A
B.3.2	Covering of ventilation openings		N/A
B.3.3	D.C. mains polarity test		N/A
B.3.4	Setting of voltage selector..... :	No such voltage selector.	N/A
B.3.5	Maximum load at output terminals..... :	No such terminals	N/A
B.3.6	Reverse battery polarity	No battery reverse polarity	N/A
B.3.7	Abnormal operating conditions as specified in Clause E.2.		N/A

IEC 62368-1			
Clause	Requirement + Test	Result - Remark	Verdict
B.3.8	Safeguards functional during and after abnormal operating conditions		N/A
B.4	Simulated single fault conditions		P
B.4.2	Temperature controlling device open or short-circuited .....		N/A
B.4.3	Motor tests		P
B.4.3.1	Motor blocked or rotor locked increasing the internal ambient temperature .....	(See appended table B.4)	P
B.4.4	Short circuit of functional insulation		P
B.4.4.1	Short circuit of clearances for functional insulation	(See appended table B.4)	P
B.4.4.2	Short circuit of creepage distances for functional insulation	(See appended table B.4)	P
B.4.4.3	Short circuit of functional insulation on coated printed boards		N/A
B.4.5	Short circuit and interruption of electrodes in tubes and semiconductors	(See appended table B.4)	P
B.4.6	Short circuit or disconnect of passive components	(See appended table B.4)	P
B.4.7	Continuous operation of components		N/A
B.4.8	Class 1 and Class 2 energy sources within limits during and after single fault conditions		P
B.4.9	Battery charging under single fault conditions ... :	(See appended table M)	P

<b>C</b>	<b>UV RADIATION</b>		<b>N/A</b>
C.1	Protection of materials in equipment from UV radiation	No UV radiation within the EUT.	N/A
C.1.2	Requirements		N/A
C.1.3	Test method		N/A
C.2	UV light conditioning test		N/A
C.2.1	Test apparatus		N/A
C.2.2	Mounting of test samples		N/A
C.2.3	Carbon-arc light-exposure apparatus		N/A
C.2.4	Xenon-arc light exposure apparatus		N/A

<b>D</b>	<b>TEST GENERATORS</b>		<b>N/A</b>
D.1	Impulse test generators		N/A
D.2	Antenna interface test generator		N/A
D.3	Electronic pulse generator		N/A

IEC 62368-1			
Clause	Requirement + Test	Result - Remark	Verdict

E	TEST CONDITIONS FOR EQUIPMENT CONTAINING AUDIO AMPLIFIERS		N/A
E.1	Audio amplifier normal operating conditions	(See appended table B.2.5)	N/A
	Audio signal voltage (V) .....		—
	Rated load impedance ( $\Omega$ ) .....		
E.2	Audio amplifier abnormal operating conditions		N/A

F	EQUIPMENT MARKINGS, INSTRUCTIONS, AND INSTRUCTIONAL SAFEGUARDS		P
F.1	General requirements		P
	Instructions – Language .....	English checked	—
F.2	Letter symbols and graphical symbols		P
F.2.1	Letter symbols according to IEC60027-1		P
F.2.2	Graphic symbols IEC, ISO or manufacturer specific		P
F.3	Equipment markings		P
F.3.1	Equipment marking locations		P
F.3.2	Equipment identification markings		P
F.3.2.1	Manufacturer identification .....	See copy of marking plate	—
F.3.2.2	Model identification .....	See copy of marking plate	—
F.3.3	Equipment rating markings		P
F.3.3.1	Equipment with direct connection to mains		N/A
F.3.3.2	Equipment without direct connection to mains		P
F.3.3.3	Nature of supply voltage.....		—
F.3.3.4	Rated voltage .....		—
F.3.3.4	Rated frequency .....		—
F.3.3.6	Rated current or rated power .....		—
F.3.3.7	Equipment with multiple supply connections	No multiple supply connection.	N/A
F.3.4	Voltage setting device		No such device.
F.3.5	Terminals and operating devices		N/A
F.3.5.1	Mains appliance outlet and socket-outlet markings.....	No mains appliance outlet.	N/A
F.3.5.2	Switch position identification marking .....	Not such switch.	N/A
F.3.5.3	Replacement fuse identification and rating markings.....		N/A
F.3.5.4	Replacement battery identification marking .....		P

IEC 62368-1			
Clause	Requirement + Test	Result - Remark	Verdict
F.3.5.5	Terminal marking location		N/A
F.3.6	Equipment markings related to equipment classification		N/A
F.3.6.1	Class I Equipment		N/A
F.3.6.1.1	Protective earthing conductor terminal		N/A
F.3.6.1.2	Neutral conductor terminal		N/A
F.3.6.1.3	Protective bonding conductor terminals		N/A
F.3.6.2	Class II equipment (IEC60417-5172)		N/A
F.3.6.2.1	Class II equipment with or without functional earth		N/A
F.3.6.2.2	Class II equipment with functional earth terminal marking		N/A
F.3.7	Equipment IP rating marking .....	IPX0, no marking is needed	—
F.3.8	External power supply output marking		N/A
F.3.9	Durability, legibility and permanence of marking	Marking is considered to be legible and easily discernible. See also the following details.	P
F.3.10	Test for permanence of markings	The label was subjected to the permanence of marking test. The label was rubbed with cloth soaked with water for 15 sec. And then again for 15 sec. With the cloth soaked with petroleum spirit. After this test there was no damage to the label. The marking on the label did not fade. There was no curling and lifting of the label edge.  After each test, the marking remained legible.	P
F.4	Instructions		P
	a) Equipment for use in locations where children not likely to be present - marking		N/A
	b) Instructions given for installation or initial use		P
	c) Equipment intended to be fastened in place		N/A
	d) Equipment intended for use only in restricted access area	Not used in restricted access area.	N/A
	e) Audio equipment terminals classified as ES3 and other equipment with terminals marked in accordance F.3.6.1		N/A
	f) Protective earthing employed as safeguard		N/A

IEC 62368-1			
Clause	Requirement + Test	Result - Remark	Verdict
	g) Protective earthing conductor current exceeding ES2 limits		N/A
	h) Symbols used on equipment		P
	i) Permanently connected equipment not provided with all-pole mains switch		N/A
	j) Replaceable components or modules providing safeguard function		N/A
F.5	Instructional safeguards		P
	Where "instructional safeguard" is referenced in the test report it specifies the required elements, location of marking and/or instruction		P

<b>G</b>	<b>COMPONENTS</b>		<b>P</b>
<b>G.1</b>	<b>Switches</b>		N/A
G.1.1	General requirements		N/A
G.1.2	Ratings, endurance, spacing, maximum load		N/A
<b>G.2</b>	<b>Relays</b>		N/A
G.2.1	General requirements		N/A
G.2.2	Overload test		N/A
G.2.3	Relay controlling connectors supply power		N/A
G.2.4	Mains relay, modified as stated in G.2		N/A
<b>G.3</b>	<b>Protection Devices</b>		N/A
G.3.1	Thermal cut-offs	No thermal cut-off used.	N/A
G.3.1.1a) &b)	Thermal cut-outs separately approved according to IEC 60730 with conditions indicated in a) & b)		N/A
G.3.1.1c)	Thermal cut-outs tested as part of the equipment as indicated in c)		N/A
G.3.1.2	Thermal cut-off connections maintained and secure		N/A
G.3.2	Thermal links		N/A
G.3.2.1a)	Thermal links separately tested with IEC 60691	No thermal link used.	N/A
G.3.2.1b)	Thermal links tested as part of the equipment		N/A
	Aging hours (H) .....		—
	Single Fault Condition .....		—
	Test Voltage (V) and Insulation Resistance (Ω). :		—
G.3.3	PTC Thermistors		N/A
G.3.4	Overcurrent protection devices		N/A



IEC 62368-1			
Clause	Requirement + Test	Result - Remark	Verdict
G.3.5	Safeguards components not mentioned in G.3.1 to G.3.5		N/A
G.3.5.1	Non-resettable devices suitably rated and marking provided		N/A
G.3.5.2	Single faults conditions.....:		N/A
<b>G.4</b>	<b>Connectors</b>		N/A
G.4.1	Spacings	Not directly connected to mains	N/A
G.4.2	Mains connector configuration .....		N/A
G.4.3	Plug is shaped that insertion into mains socket-outlets or appliance coupler is unlikely		N/A
<b>G.5</b>	<b>Wound Components</b>		N/A
G.5.1	Wire insulation in wound components..... :		N/A
G.5.1.2 a)	Two wires in contact inside wound component, angle between 45° and 90°		N/A
G.5.1.2 b)	Construction subject to routine testing		N/A
G.5.2	Endurance test on wound components		N/A
G.5.2.1	General test requirements		N/A
G.5.2.2	Heat run test		N/A
	Time (s) .....		—
	Temperature (°C) .....		—
G.5.2.3	Wound Components supplied by mains		N/A
<b>G.5.3</b>	<b>Transformers</b>		N/A
G.5.3.1	Requirements applied (IEC61204-7, IEC61558-1/-2, and/or IEC62368-1).....:		N/A
	Position.....:		—
	Method of protection .....		—
G.5.3.2	Insulation		N/A
	Protection from displacement of windings.....:		—
G.5.3.3	Overload test .....		N/A
G.5.3.3.1	Test conditions		N/A
G.5.3.3.2	Winding Temperatures testing in the unit		N/A
G.5.3.3.3	Winding Temperatures - Alternative test method		N/A
<b>G.5.4</b>	<b>Motors</b>		P
G.5.4.1	General requirements		P
	Position .....		—
G.5.4.2	Test conditions		N/A

IEC 62368-1			
Clause	Requirement + Test	Result - Remark	Verdict
G.5.4.3	Running overload test		N/A
G.5.4.4	Locked-rotor overload test		N/A
	Test duration (days) .....		—
G.5.4.5	Running overload test for d.c. motors in secondary circuits		N/A
G.5.4.5.2	Tested in the unit		N/A
	Electric strength test (V) .....		—
G.5.4.5.3	Tested on the Bench - Alternative test method; test time (h) .....		N/A
	Electric strength test (V) .....		—
G.5.4.6	Locked-rotor overload test for d.c. motors in secondary circuits		P
G.5.4.6.2	Tested in the unit		P
	Maximum Temperature .....	(See appended table B.4)	N/A
	Electric strength test (V) .....		N/A
G.5.4.6.3	Tested on the bench - Alternative test method; test time (h) .....		N/A
	Electric strength test (V) .....		N/A
G.5.4.7	Motors with capacitors		N/A
G.5.4.8	Three-phase motors		N/A
G.5.4.9	Series motors		N/A
	Operating voltage .....		—
<b>G.6</b>	<b>Wire Insulation</b>		N/A
G.6.1	General		N/A
G.6.2	Solvent-based enamel wiring insulation		N/A
<b>G.7</b>	<b>Mains supply cords</b>		N/A
G.7.1	General requirements	Not directly connected to mains	N/A
	Type.....		—
	Rated current (A).....		—
	Cross-sectional area (mm <sup>2</sup> ), (AWG).....		—
G.7.2	Compliance and test method		N/A
G.7.3	Cord anchorages and strain relief for non-detachable power supply cords		N/A
G.7.3.2	Cord strain relief		N/A
G.7.3.2.1	Requirements		N/A
	Strain relief test force (N) .....		—

IEC 62368-1			
Clause	Requirement + Test	Result - Remark	Verdict
G.7.3.2.2	Strain relief mechanism failure		N/A
G.7.3.2.3	Cord sheath or jacket position, distance (mm)..... :		—
G.7.3.2.4	Strain relief comprised of polymeric material		N/A
G.7.4	Cord Entry ..... :		N/A
G.7.5	Non-detachable cord bend protection		N/A
G.7.5.1	Requirements		N/A
G.7.5.2	Mass (g) ..... :		—
	Diameter (m) ..... :		—
	Temperature (°C) ..... :		—
G.7.6	Supply wiring space		N/A
G.7.6.2	Stranded wire		N/A
G.7.6.2.1	Test with 8 mm strand		N/A
<b>G.8</b>	<b>Varistors</b>		N/A
G.8.1	General requirements	No varistors used.	N/A
G.8.2	Safeguard against shock		N/A
G.8.3	Safeguard against fire		N/A
G.8.3.2	Varistor overload test ..... :		N/A
G.8.3.3	Temporary overvoltage ..... :		N/A
<b>G.9</b>	<b>Integrated Circuit (IC) Current Limiters</b>		N/A
G.9.1 a)	Manufacturer defines limit at max. 5A.	No such IC used.	N/A
G.9.1 b)	Limiters do not have manual operator or reset		N/A
G.9.1 c)	Supply source does not exceed 250 VA ..... :		—
G.9.1 d)	IC limiter output current (max. 5A) ..... :		—
G.9.1 e)	Manufacturers' defined drift ..... :		—
G.9.2	Test Program 1		N/A
G.9.3	Test Program 2		N/A
G.9.4	Test Program 3		N/A
<b>G.10</b>	<b>Resistors</b>		N/A
G.10.1	General requirements		N/A
G.10.2	Resistor test		N/A
G.10.3	Test for resistors serving as safeguards between the mains and an external circuit consisting of a coaxial cable		N/A
G.10.3.1	General requirements		N/A
G.10.3.2	Voltage surge test		N/A

IEC 62368-1			
Clause	Requirement + Test	Result - Remark	Verdict
G.10.3.3	Impulse test		N/A
<b>G.11</b>	<b>Capacitor and RC units</b>		N/A
G.11.1	General requirements	No such components used	N/A
G.11.2	Conditioning of capacitors and RC units		N/A
G.11.3	Rules for selecting capacitors		N/A
<b>G.12</b>	<b>Optocouplers</b>		N/A
	Optocouplers comply with IEC 60747-5-5:2007 Spacing or Electric Strength Test (specify option and test results) .....		N/A
	Type test voltage $V_{ini}$ .....		—
	Routine test voltage, $V_{ini,b}$ .....		—
<b>G.13</b>	<b>Printed boards</b>		P
G.13.1	General requirements		P
G.13.2	Uncoated printed boards		P
G.13.3	Coated printed boards		N/A
G.13.4	Insulation between conductors on the same inner surface		N/A
	Compliance with cemented joint requirements (Specify construction) .....		—
G.13.5	Insulation between conductors on different surfaces		N/A
	Distance through insulation .....		N/A
	Number of insulation layers (pcs) .....		—
G.13.6	Tests on coated printed boards		N/A
G.13.6.1	Sample preparation and preliminary inspection		N/A
G.13.6.2a)	Thermal conditioning		N/A
G.13.6.2b)	Electric strength test		N/A
G.13.6.2c)	Abrasion resistance test		N/A
<b>G.14</b>	<b>Coating on components terminals</b>		N/A
G.14.1	Requirements .....		N/A
<b>G.15</b>	<b>Liquid filled components</b>		N/A
G.15.1	General requirements		N/A
G.15.2	Requirements		N/A
G.15.3	Compliance and test methods		N/A
G.15.3.1	Hydrostatic pressure test		N/A
G.15.3.2	Creep resistance test		N/A

IEC 62368-1			
Clause	Requirement + Test	Result - Remark	Verdict
G.15.3.3	Tubing and fittings compatibility test		N/A
G.15.3.4	Vibration test		N/A
G.15.3.5	Thermal cycling test		N/A
G.15.3.6	Force test		N/A
G.15.4	Compliance		N/A
<b>G.16</b>	<b>IC including capacitor discharge function (ICX)</b>		N/A
a)	Humidity treatment in accordance with sc5.4.8 – 120 hours		N/A
b)	Impulse test using circuit 2 with $U_c =$ to transient voltage .....		N/A
C1)	Application of ac voltage at 110% of rated voltage for 2.5 minutes		N/A
C2)	Test voltage .....		—
D1)	10,000 cycles on and off using capacitor with smallest capacitance resistor with largest resistance specified by manufacturer		N/A
D2)	Capacitance .....		—
D3)	Resistance .....		—

<b>H</b>	<b>CRITERIA FOR TELEPHONE RINGING SIGNALS</b>	<b>N/A</b>
H.1	General	N/A
H.2	Method A	N/A
H.3	Method B	N/A
H.3.1	Ringng signal	N/A
H.3.1.1	Frequency (Hz) .....	—
H.3.1.2	Voltage (V) .....	—
H.3.1.3	Cadence; time (s) and voltage (V) .....	—
H.3.1.4	Single fault current (mA):.....	—
H.3.2	Tripping device and monitoring voltage .....	N/A
H.3.2.1	Conditions for use of a tripping device or a monitoring voltage complied with	N/A
H.3.2.2	Tripping device	N/A
H.3.2.3	Monitoring voltage (V) .....	—

<b>J</b>	<b>INSULATED WINDING WIRES FOR USE WITHOUT INTERLEAVED INSULATION</b>	<b>N/A</b>
	General requirements	N/A

IEC 62368-1			
Clause	Requirement + Test	Result - Remark	Verdict

<b>K</b>	<b>SAFETY INTERLOCKS</b>		<b>N/A</b>
K.1	General requirements	No safety interlocks inside the EUT	N/A
K.2	Components of safety interlock safeguard mechanism .....		N/A
K.3	Inadvertent change of operating mode		N/A
K.4	Interlock safeguard override		N/A
K.5	Fail-safe		N/A
	Compliance .....		N/A
K.6	Mechanically operated safety interlocks		N/A
K.6.1	Endurance requirement		N/A
K.6.2	Compliance and Test method .....		N/A
K.7	Interlock circuit isolation		N/A
K.7.1	Separation distance for contact gaps & interlock circuit elements (type and circuit location) .....		N/A
K.7.2	Overload test, Current (A) .....		N/A
K.7.3	Endurance test		N/A
K.7.4	Electric strength test .....		N/A

<b>L</b>	<b>DISCONNECT DEVICES</b>		<b>N/A</b>
L.1	General requirements		N/A
L.2	Permanently connected equipment		N/A
L.3	Parts that remain energized		N/A
L.4	Single phase equipment		N/A
L.5	Three-phase equipment		N/A
L.6	Switches as disconnect devices		N/A
L.7	Plugs as disconnect devices		N/A
L.8	Multiple power sources		N/A

<b>M</b>	<b>EQUIPMENT CONTAINING BATTERIES AND THEIR PROTECTION CIRCUITS</b>		<b>P</b>
M.1	General requirements		P
M.2	Safety of batteries and their cells		P
M.2.1	Requirements		P
M.2.2	Compliance and test method (identify method) ...	Provided by the manufacture	P

IEC 62368-1			
Clause	Requirement + Test	Result - Remark	Verdict
M.3	Protection circuits		P
M.3.1	Requirements		P
M.3.2	Tests		P
	- Overcharging of a rechargeable battery		P
	- Unintentional charging of a non-rechargeable battery		N/A
	- Reverse charging of a rechargeable battery		N/A
	- Excessive discharging rate for any battery		P
M.3.3	Compliance .....	After above test have not created a hazard in the meaning of this standard	P
M.4	Additional safeguards for equipment containing secondary lithium battery		P
M.4.1	General		P
M.4.2	Charging safeguards		P
M.4.2.1	Charging operating limits		P
M.4.2.2a)	Charging voltage, current and temperature .....	(See appended table M.4)	—
M.4.2.2 b)	Single faults in charging circuitry .....	(See appended table M.4)	—
M.4.3	Fire Enclosure	Metal Cover	P
M.4.4	Endurance of equipment containing a secondary lithium battery		P
M.4.4.2	Preparation		P
M.4.4.3	Drop and charge/discharge function tests		P
	Drop		P
	Charge		P
	Discharge		P
M.4.4.4	Charge-discharge cycle test		P
M.4.4.5	Result of charge-discharge cycle test		P
M.5	Risk of burn due to short circuit during carrying	See appended table B.4	P
M.5.1	Requirement		P
M.5.2	Compliance and Test Method (Test of P.2.3)		P
M.6	Prevention of short circuits and protection from other effects of electric current	See appended table B.4	P
M.6.1	Short circuits		P
M.6.1.1	General requirements		P
M.6.1.2	Test method to simulate an internal fault		P

IEC 62368-1			
Clause	Requirement + Test	Result - Remark	Verdict
M.6.1.3	Compliance (Specify M.6.1.2 or alternative method) .....		N/A
M.6.2	Leakage current (mA) .....		N/A
M.7	Risk of explosion from lead acid and NiCd batteries		N/A
M.7.1	Ventilation preventing explosive gas concentration		N/A
M.7.2	Compliance and test method		N/A
M.8	Protection against internal ignition from external spark sources of lead acid batteries		N/A
M.8.1	General requirements		N/A
M.8.2	Test method		N/A
M.8.2.1	General requirements		N/A
M.8.2.2	Estimation of hypothetical volume Vz (m <sup>3</sup> /s).....		—
M.8.2.3	Correction factors.....		—
M.8.2.4	Calculation of distance d (mm) .....		—
M.9	Preventing electrolyte spillage		N/A
M.9.1	Protection from electrolyte spillage		N/A
M.9.2	Tray for preventing electrolyte spillage		N/A
M.10	Instructions to prevent reasonably foreseeable misuse (Determination of compliance: inspection, data review; or abnormal testing) .....	Provided the instructions include battery charging, storage and transportation, and disposal and recycling.	P

<b>N</b>	<b>ELECTROCHEMICAL POTENTIALS</b>		<b>N/A</b>
	Metal(s) used .....		—

<b>O</b>	<b>MEASUREMENT OF CREEPAGE DISTANCES AND CLEARANCES</b>		<b>N/A</b>
	Figures O.1 to O.20 of this Annex applied .....	Considered	—

<b>P</b>	<b>SAFEGUARDS AGAINST ENTRY OF FOREIGN OBJECTS AND SPILLAGE OF INTERNAL LIQUIDS</b>		<b>N/A</b>
P.1	General requirements	No opening	N/A
P.2.2	Safeguards against entry of foreign object	No safeguards requirement.	N/A
	Location and Dimensions (mm) .....		—
P.2.3	Safeguard against the consequences of entry of foreign object		N/A



IEC 62368-1			
Clause	Requirement + Test	Result - Remark	Verdict
P.2.3.1	Safeguards against the entry of a foreign object		N/A
	Openings in transportable equipment		N/A
	Transportable equipment with metalized plastic parts .....		N/A
P.2.3.2	Openings in transportable equipment in relation to metallized parts of a barrier or enclosure (identification of supplementary safeguard) .....		N/A
P.3	Safeguards against spillage of internal liquids		N/A
P.3.1	General requirements		N/A
P.3.2	Determination of spillage consequences		N/A
P.3.3	Spillage safeguards		N/A
P.3.4	Safeguards effectiveness		N/A
P.4	Metallized coatings and adhesive securing parts		N/A
P.4.2 a)	Conditioning testing		N/A
	Tc (°C) .....		—
	Tr (°C) .....		—
	Ta (°C) .....		—
P.4.2 b)	Abrasion testing .....		N/A
P.4.2 c)	Mechanical strength testing .....		N/A

Q	CIRCUITS INTENDED FOR INTERCONNECTION WITH BUILDING WIRING		N/A
Q.1	Limited power sources		N/A
Q.1.1 a)	Inherently limited output		N/A
Q.1.1 b)	Impedance limited output		N/A
	- Regulating network limited output under normal operating and simulated single fault condition	See appended table Annex Q.1	N/A
Q.1.1 c)	Overcurrent protective device limited output		N/A
Q.1.1 d)	IC current limiter complying with G.9		N/A
Q.1.2	Compliance and test method		N/A
Q.2	Test for external circuits – paired conductor cable		N/A
	Maximum output current (A) .....		—
	Current limiting method .....		—

R	LIMITED SHORT CIRCUIT TEST		N/A
R.1	General requirements		N/A

IEC 62368-1			
Clause	Requirement + Test	Result - Remark	Verdict
R.2	Determination of the overcurrent protective device and circuit		N/A
R.3	Test method Supply voltage (V) and short-circuit current (A). .....		N/A

S	TESTS FOR RESISTANCE TO HEAT AND FIRE	N/A
S.1	Flammability test for fire enclosures and fire barrier materials of equipment where the steady state power does not exceed 4 000 W	N/A
	Samples, material .....	—
	Wall thickness (mm) .....	—
	Conditioning (°C) .....	—
	Test flame according to IEC 60695-11-5 with conditions as set out	N/A
	- Material not consumed completely	N/A
	- Material extinguishes within 30s	N/A
	- No burning of layer or wrapping tissue	N/A
S.2	Flammability test for fire enclosure and fire barrier integrity	N/A
	Samples, material .....	—
	Wall thickness (mm) .....	—
	Conditioning (°C) .....	—
	Test flame according to IEC 60695-11-5 with conditions as set out	N/A
	Test specimen does not show any additional hole	N/A
S.3	Flammability test for the bottom of a fire enclosure	N/A
	Samples, material .....	—
	Wall thickness (mm) .....	—
	Cheesecloth did not ignite	N/A
S.4	Flammability classification of materials	N/A
S.5	Flammability test for fire enclosures and fire barrier materials of equipment where the steady state power does not exceed 4 000 W	N/A
	Samples, material .....	—
	Wall thickness (mm) .....	—
	Conditioning (test condition), (°C) .....	—

IEC 62368-1			
Clause	Requirement + Test	Result - Remark	Verdict
	Test flame according to IEC 60695-11-20 with conditions as set out		N/A
	After every test specimen was not consumed completely		N/A
	After fifth flame application, flame extinguished within 1 min		N/A
<b>T</b>	<b>MECHANICAL STRENGTH TESTS</b>		<b>P</b>
T.1	General requirements		P
T.2	Steady force test, 10 N .....		N/A
T.3	Steady force test, 30 N .....		N/A
T.4	Steady force test, 100 N .....	(See appended table T.4)	P
T.5	Steady force test, 250 N .....		N/A
T.6	Enclosure impact test		N/A
	Fall test		N/A
	Swing test		N/A
T.7	Drop test .....	(See appended table T.7)	P
T.8	Stress relief test .....	(See appended table T.8)	P
T.9	Impact Test (glass)		N/A
T.9.1	General requirements		N/A
T.9.2	Impact test and compliance		N/A
	Impact energy (J).....		—
	Height (m) .....		—
T.10	Glass fragmentation test .....		N/A
T.11	Test for telescoping or rod antennas		N/A
	Torque value (Nm) .....		—

<b>U</b>	<b>MECHANICAL STRENGTH OF CATHODE RAY TUBES (CRT) AND PROTECTION AGAINST THE EFFECTS OF IMPLOSION</b>		<b>N/A</b>
U.1	General requirements		N/A
U.2	Compliance and test method for non-intrinsically protected CRTs		N/A
U.3	Protective Screen.....		N/A

<b>V</b>	<b>DETERMINATION OF ACCESSIBLE PARTS (FINGERS, PROBES AND WEDGES)</b>		<b>P</b>
V.1	Accessible parts of equipment		P

Report No. STS211022001001E

IEC 62368-1			
Clause	Requirement + Test	Result - Remark	Verdict
V.2	Accessible part criterion		P

EN 62368-1			
Clause	Requirement + Test	Result - Remark	Verdict

<b>ATTACHMENT TO TEST REPORT</b> <b>IEC 62368-1</b> <b>EUROPEAN GROUP DIFFERENCES AND NATIONAL DIFFERENCES</b> <b>(Audio/video, information and communication technology equipment - Part 1: Safety requirements)</b>	
<b>Differences according to</b>	EN 62368-1:2014+A11:2017
<b>Attachment Form No.</b>	EU_GD_IEC62368_1B_II
<b>Attachment Originator</b>	Nemko AS
<b>Master Attachment</b>	Date 2017-09-22
<b>Copyright © 2017 IEC System for Conformity Testing and Certification of Electrical Equipment (IECEE), Geneva, Switzerland. All rights reserved.</b>	

	<b>CENELEC COMMON MODIFICATIONS (EN)</b>	P																																				
	Clauses, subclauses, notes, tables, figures and annexes which are additional to those in IEC 62368-1:2014 are prefixed "Z".	P																																				
CONTENTS	<b>Add the following annexes:</b> Annex ZA (normative) Normative references to international publications with their corresponding European publications Annex ZB (normative) Special national conditions Annex ZC (informative) A-deviations Annex ZD (informative) IEC and CENELEC code designations for flexible cords	P																																				
	Delete all the "country" notes in the reference document (IEC 62368-1:2014) according to the following list: <table border="1" data-bbox="502 1339 1093 1617"> <tr> <td>0.2.1</td> <td>Note</td> <td>1</td> <td>Note 3</td> <td>4.1.15</td> <td>Note</td> </tr> <tr> <td>4.7.3</td> <td>Note 1 and 2</td> <td>5.2.2.2</td> <td>Note</td> <td>5.4.2.3.2.2 Table 13</td> <td>Note c</td> </tr> <tr> <td>5.4.2.3.2.4</td> <td>Note 1 and 3</td> <td>5.4.2.5</td> <td>Note 2</td> <td>5.4.5.1</td> <td>Note</td> </tr> <tr> <td>5.5.2.1</td> <td>Note</td> <td>5.5.6</td> <td>Note</td> <td>5.6.4.2.1</td> <td>Note 2 and 3</td> </tr> <tr> <td>5.7.5</td> <td>Note</td> <td>5.7.6.1</td> <td>Note 1 and 2</td> <td>10.2.1 Table 39</td> <td>Note 2, 3 and 4</td> </tr> <tr> <td>10.5.3</td> <td>Note 2</td> <td>10.6.2.1</td> <td>Note 3</td> <td>F.3.3.6</td> <td>Note 3</td> </tr> </table>	0.2.1	Note	1	Note 3	4.1.15	Note	4.7.3	Note 1 and 2	5.2.2.2	Note	5.4.2.3.2.2 Table 13	Note c	5.4.2.3.2.4	Note 1 and 3	5.4.2.5	Note 2	5.4.5.1	Note	5.5.2.1	Note	5.5.6	Note	5.6.4.2.1	Note 2 and 3	5.7.5	Note	5.7.6.1	Note 1 and 2	10.2.1 Table 39	Note 2, 3 and 4	10.5.3	Note 2	10.6.2.1	Note 3	F.3.3.6	Note 3	P
0.2.1	Note	1	Note 3	4.1.15	Note																																	
4.7.3	Note 1 and 2	5.2.2.2	Note	5.4.2.3.2.2 Table 13	Note c																																	
5.4.2.3.2.4	Note 1 and 3	5.4.2.5	Note 2	5.4.5.1	Note																																	
5.5.2.1	Note	5.5.6	Note	5.6.4.2.1	Note 2 and 3																																	
5.7.5	Note	5.7.6.1	Note 1 and 2	10.2.1 Table 39	Note 2, 3 and 4																																	
10.5.3	Note 2	10.6.2.1	Note 3	F.3.3.6	Note 3																																	
Special	For special national conditions, see Annex ZB.	P																																				
1	Add the following note: NOTE Z1 The use of certain substances in electrical and electronic equipment is restricted within the EU: see Directive 2011/65/EU.	P																																				
4.Z1	Protective devices included as integral parts of the equipment or as parts of the building installation:	N/A																																				
	a) Included as parts of the equipment	N/A																																				
	b) For components in series with the mains; by devices in the building installation	N/A																																				
	c) For pluggable type B or permanently connected; by devices in the building installation	N/A																																				

EN 62368-1			
Clause	Requirement + Test	Result - Remark	Verdict
5.4.2.3.2.4	<b>Add</b> the following to the end of this subclause: The requirement for interconnection with <b>external circuit</b> is in addition given in EN 50491-3:2009.		N/A
10.2.1	<b>Add</b> the following to c) and d) in table 39: For additional requirements, see 10.5.1.		N/A
10.5.1	<b>Add</b> the following after the first paragraph: For RS 1 compliance is checked by measurement under the following conditions: In addition to the normal operating conditions, all controls adjustable from the outside by hand, by any object such as a tool or a coin, and those internal adjustments or presets which are not locked in a reliable manner, are adjusted so as to give maximum radiation whilst maintaining an intelligible picture for 1 h, at the end of which the measurement is made. NOTE Z1 Soldered joints and paint lockings are examples of adequate locking. The dose-rate is determined by means of a radiation monitor with an effective area of 10 cm <sup>2</sup> , at any point 10 cm from the outer surface of the apparatus. Moreover, the measurement shall be made under fault conditions causing an increase of the high-voltage, provided an intelligible picture is maintained for 1 h, at the end of which the measurement is made. For RS1, the dose-rate shall not exceed 1 μSv/h taking account of the background level. NOTE Z2 These values appear in Directive 96/29/Euratom of 13 May 1996.		N/A
10.6.1	<b>Add</b> the following paragraph to the end of the subclause: EN 71-1:2011, 4.20 and the related tests methods and measurement distances apply.		N/A
10.Z1	<b>Add</b> the following new subclause after 10.6.5. <b>10.Z1 Non-ionizing radiation from radio frequencies in the range 0 to 300 GHz</b> The amount of non-ionizing radiation is regulated by European Council Recommendation 1999/519/EC of 12 July 1999 on the limitation of exposure of the general public to electromagnetic fields (0 Hz to 300 GHz). For intentional radiators, ICNIRP guidelines should be taken into account for Limiting Exposure to Time-Varying Electric, Magnetic, and Electromagnetic Fields (up to 300 GHz). For hand-held and body-mounted devices, attention is drawn to EN 50360 and EN 50566		N/A
G.7.1	<b>Add</b> the following note: NOTE Z1 The harmonized code designations corresponding to the IEC cord types are given in Annex ZD.		N/A
Bibliography	<b>Add</b> the following standards: <b>Add</b> the following notes for the standards indicated:		P

EN 62368-1			
Clause	Requirement + Test	Result - Remark	Verdict
	IEC 60130-9 NOTE Harmonized as EN 60130-9. IEC 60269-2 NOTE Harmonized as HD 60269-2. IEC 60309-1 NOTE Harmonized as EN 60309-1. IEC 60364 NOTE some parts harmonized in HD 384/HD 60364 series. IEC 60601-2-4 NOTE Harmonized as EN 60601-2-4. IEC 60664-5 NOTE Harmonized as EN 60664-5. IEC 61032:1997 NOTE Harmonized as EN 61032:1998 (not modified). IEC 61508-1 NOTE Harmonized as EN 61508-1. IEC 61558-2-1 NOTE Harmonized as EN 61558-2-1. IEC 61558-2-4 NOTE Harmonized as EN 61558-2-4. IEC 61558-2-6 NOTE Harmonized as EN 61558-2-6. IEC 61643-1 NOTE Harmonized as EN 61643-1. IEC 61643-21 NOTE Harmonized as EN 61643-21. IEC 61643-311 NOTE Harmonized as EN 61643-311. IEC 61643-321 NOTE Harmonized as EN 61643-321. IEC 61643-331 NOTE Harmonized as EN 61643-331.		
<b>ZB</b>	<b>ANNEX ZB, SPECIAL NATIONAL CONDITIONS (EN)</b>		<b>P</b>
4.1.15	<p><b>Denmark, Finland, Norway and Sweden</b>                      To the end of the subclause the following is added:  <b>Class I pluggable equipment type A</b> intended for connection to other equipment or a network shall, if safety relies on connection to reliable earthing or if surge suppressors are connected between the network terminals and <b>accessible</b> parts, have a marking stating that the equipment shall be connected to an earthed <b>mains</b> socket-outlet.                      The marking text in the applicable countries shall be as follows:                      In <b>Denmark</b>: "Apparatets stikprop skal tilsluttes en stikkontakt med jord som giver forbindelse til stikproppens jord."                      In <b>Finland</b>: "Laite on liitettävä suojakoskettimilla varustettuun pistorasiaan"                      In <b>Norway</b>: "Apparatet må tilkoples jordet stikkontakt"                      In <b>Sweden</b>: "Apparaten skall anslutas till jordat uttag"</p>		N/A
4.7.3	<p><b>United Kingdom</b>                      To the end of the subclause the following is added:                      The torque test is performed using a socket-outlet complying with BS 1363, and the plug part shall be assessed to the relevant clauses of BS 1363.                      Also see Annex G.4.2 of this annex</p>		N/A
5.2.2.2	<p><b>Denmark</b>                      After the 2nd paragraph add the following:                      A warning (marking <b>safeguard</b>) for high <b>touch current</b> is required if the <b>touch current</b> exceeds the limits of 3,5 mA a.c. or 10 mA d.c.</p>		N/A
5.4.11.1	<p><b>Finland and Sweden</b>                      To the end of the subclause the following is</p>		N/A

EN 62368-1			
Clause	Requirement + Test	Result - Remark	Verdict
and Annex G	<p>added: For separation of the telecommunication network from earth the following is applicable: If this insulation is solid, including insulation forming part of a component, it shall at least consist of either</p> <ul style="list-style-type: none"> <li>• two layers of thin sheet material, each of which shall pass the electric strength test below, or</li> <li>• one layer having a distance through insulation of at least 0,4 mm, which shall pass the electric strength test below.</li> </ul> <p>If this insulation forms part of a semiconductor component (e.g. an optocoupler), there is no distance through insulation requirement for the insulation consisting of an insulating compound completely filling the casing, so that clearances and creepage distances do not exist, if the component passes the electric strength test in accordance with the compliance clause below and in addition</p> <ul style="list-style-type: none"> <li>• passes the tests and inspection criteria of 5.4.8 with an electric strength test of 1,5 kV multiplied by 1,6 (the electric strength test of 5.4.9 shall be performed using 1,5 kV), and</li> <li>• is subject to routine testing for electric strength during manufacturing, using a test voltage of 1,5kV.</li> </ul> <p>It is permitted to bridge this insulation with a capacitor complying with EN 60384-14:2005, subclass Y2. A capacitor classified Y3 according to EN 60384-14:2005, may bridge this insulation under the following conditions:</p> <ul style="list-style-type: none"> <li>• the insulation requirements are satisfied by having a capacitor classified Y3 as defined by EN 60384-14, which in addition to the Y3 testing, is tested with an impulse test of 2,5 kV defined in 5.4.11;</li> <li>• the additional testing shall be performed on all the test specimens as described in EN 60384-14; the impulse test of 2,5 kV is to be performed before the endurance test in EN 60384-14, in the sequence of tests as described in EN 60384-14.</li> </ul>		
5.5.2.1	<p><b>Norway</b> After the 3rd paragraph the following is added: Due to the IT power system used, capacitors are required to be rated for the applicable line-to-line voltage (230 V).</p>		N/A
5.5.6	<p><b>Finland, Norway and Sweden</b> To the end of the subclause the following is added: Resistors used as <b>basic safeguard</b> or bridging <b>basic insulation in class I pluggable equipment type A</b> shall comply with G.10.1 and</p>		N/A



EN 62368-1			
Clause	Requirement + Test	Result - Remark	Verdict
	the test of G.10.2.		
5.6.1	<p><b>Denmark</b>  <b>Add</b> to the end of the subclause            Due to many existing installations where the socket-outlets can be protected with fuses with higher rating than the rating of the socket-outlets the protection for pluggable equipment type A shall be an integral part of the equipment.  <i>Justification:</i>            In Denmark an existing 13 A socket outlet can be protected by a 20 A fuse.</p>		N/A
5.6.4.2.1	<p><b>Ireland and United Kingdom</b>            After the indent for <b>pluggable equipment type A</b>, the following is added:            – the <b>protective current rating</b> is taken to be 13 A, this being the largest rating of fuse used in the <b>mains</b> plug.</p>		N/A
5.6.5.1	<p><b>Ireland and United Kingdom</b> To the second paragraph the following is added:            The range of conductor sizes of flexible cords to be accepted by terminals for equipment with a rated current over 10 A and up to and including 13 A is:            1,25 mm<sup>2</sup> to 1,5 mm<sup>2</sup> in cross-sectional area.</p>		N/A
5.7.5	<p><b>Denmark</b>            To the end of the subclause the following is added:            The installation instruction shall be affixed to the equipment if the <b>protective conductor current</b> exceeds the limits of 3,5 mA a.c. or 10 mA d.c.</p>		N/A
5.7.6.1	<p><b>Norway and Sweden</b>            To the end of the subclause the following is added:            The screen of the television distribution system is normally not earthed at the entrance of the building and there is normally no equipotential bonding system within the building. Therefore the protective earthing of the building installation needs to be isolated from the screen of a cable distribution system.            It is however accepted to provide the insulation external to the equipment by an adapter or an interconnection cable with galvanic isolator, which may be provided by a retailer, for example.            The user manual shall then have the following or similar information in Norwegian and Swedish language respectively, depending on in what country the equipment is intended to be used in:            “Apparatus connected to the protective earthing of the building installation through the mains connection or through other apparatus with a connection to protective earthing – and to a television distribution system using coaxial cable,</p>		N/A

EN 62368-1			
Clause	Requirement + Test	Result - Remark	Verdict
	<p>may in some circumstances create a fire hazard. Connection to a television distribution system therefore has to be provided through a device providing electrical isolation below a certain frequency range (galvanic isolator, see EN 60728-11)"</p> <p>NOTE In Norway, due to regulation for CATV-installations, and in Sweden, a galvanic isolator shall provide electrical insulation below 5 MHz. The insulation shall withstand a dielectric strength of 1,5 kV r.m.s., 50 Hz or 60 Hz, for 1 min.</p> <p>Translation to Norwegian (the Swedish text will also be accepted in Norway):                      "Apparater som er koplet til beskyttelsesjord via nettplugg og/eller via annet jordtilkøpelt utstyr – og er tilkøpelt et koaksialbasert kabel-TV nett, kan forårsake brannfare. For å unngå dette skal det ved tilkøpling av apparater til kabel-TV nett installeres en galvanisk isolator mellom apparatet og kabel-TV nettet."                      Translation to Swedish:                      "Apparater som är kopplad till skyddsjord via jordat vägguttag och/eller via annan utrustning och samtidigt är kopplad till kabel-TV nät kan i vissa fall medföra risk för brand. För att undvika detta skall vid anslutning av apparaten till kabel-TV nät galvanisk isolator finnas mellan apparaten och kabel-TV nätet."</p>		
5.7.6.2	<p><b>Denmark</b>                      To the end of the subclause the following is added:                      The warning (marking safeguard) for high touch current is required if the touch current or the protective current exceed the limits of 3,5 mA .</p>		N/A
B.3.1 and B.4	<p><b>Ireland and United Kingdom</b>                      The following is applicable:                      To protect against excessive currents and short-circuits in the primary circuit of <b>direct plug-in equipment</b>, tests according to Annexes B.3.1 and B.4 shall be conducted using an external miniature circuit breaker complying with EN 60898-1, Type B, rated 32A. If the equipment does not pass these tests, suitable protective devices shall be included as an integral part of the <b>direct plug-in equipment</b>, until the requirements of Annexes B.3.1 and B.4 are met</p>		N/A
G.4.2	<p><b>Denmark:</b>                      Appliances rated ≤13 A provided with a plug according to DS 60884-2-D1:2011.                      Class I equipment provided with socket-outlets provided with a plug in accordance with standard sheet DK 2-1a or DK 2-5a.</p>		N/A

EN 62368-1			
Clause	Requirement + Test	Result - Remark	Verdict
	<p>If a single-phase equipment having rated &gt;13 A or poly-phase equipment provided with a supply cord with a plug, plug in accordance with the standard sheets DK 6-1a in DS 60884-2-D1 or EN 60309-2.</p> <p>Mains socket outlets intended for providing power to Class II apparatus rated 2,5 A in accordance with DS 60884-2-D1:2011 standard sheet DKA 1-4a.</p> <p>Other current rating socket outlets in compliance with Standard Sheet DKA 1-3a or DKA 1-1c.</p> <p>Mains socket-outlets with earth in compliance with DS 60884-2-D1:2011 Standard Sheet DK 1-3a, DK 1-1c, DK1-1d, DK 1-5a or DK 1-7a</p>		
G.4.2	<p><b>United Kingdom</b></p> <p>To the end of the subclause the following is added:</p> <p>The plug part of direct plug-in equipment shall be assessed to BS 1363: Part 1, 12.1, 12.2, 12.3, 12.9, 12.11, 12.12, 12.13, 12.16, and 12.17, except that the test of 12.17 is performed at not less than 125 °C. Where the metal earth pin is replaced by an Insulated Shutter Opening Device (ISOD), the requirements of clauses 22.2 and 23 also apply.</p>		N/A
G.7.1	<p><b>United Kingdom</b></p> <p>To the first paragraph the following is added:</p> <p>Equipment which is fitted with a flexible cable or cord and is designed to be connected to a mains socket conforming to BS 1363 by means of that flexible cable or cord shall be fitted with a 'standard plug' in accordance with the Plugs and Sockets etc (Safety) Regulations 1994, Statutory Instrument 1994 No. 1768, unless exempted by those regulations.</p> <p>NOTE "Standard plug" is defined in SI 1768:1994 and essentially means an approved plug conforming to BS 1363 or an approved conversion plug.</p>		N/A
G.7.1	<p><b>Ireland</b></p> <p>To the first paragraph the following is added:</p> <p>Apparatus which is fitted with a flexible cable or cord shall be provided with a plug in accordance with Statutory Instrument 525: 1997, "13 A Plugs and Conversion Adapters for Domestic Use Regulations: 1997. S.I. 525 provides for the recognition of a standard of another Member State which is equivalent to the relevant Irish Standard</p>		N/A
G.7.2	<p><b>Ireland and United Kingdom</b></p> <p>To the first paragraph the following is added:</p> <p>A power supply cord with a conductor of 1,25</p>		N/A

EN 62368-1			
Clause	Requirement + Test	Result - Remark	Verdict
	mm <sup>2</sup> is allowed for equipment which is rated over 10 A and up to and including 13 A.		
<b>ZC</b>	<b>ANNEX ZC, NATIONAL DEVIATIONS (EN)</b>		N/A
10.5.2	<p><b>Germany</b></p> <p>The following requirement applies: For the operation of any cathode ray tube intended for the display of visual images operating at an acceleration voltage exceeding 40 kV, authorization is required, or application of type approval (Bauartzulassung) and marking.</p> <p><i>Justification:</i> German ministerial decree against ionizing radiation (Röntgenverordnung), in force since 2002-07-01, implementing the European Directive 96/29/EURATOM.</p> <p><b>NOTE</b> Contact address: Physikalisch-Technische Bundesanstalt, Bundesallee 100, D-38116 Braunschweig, Tel.: Int +49-531-592-6320, Internet: <a href="http://www.ptb.de">http://www.ptb.de</a></p>		N/A

IEC 62368-1			
Clause	Requirement + Test	Result - Remark	Verdict

4.1.2	TABLE: List of critical components					P
Object / part No.	Manufacturer/ trademark	Type / model	Technical data	Standard	Mark(s) of conformity <sup>1</sup>	
PCB	SHENZHEN WUZHU TECH CO LTD	WH-1	V-0, 130°C	UL 796	UL	
(Alt.)	Interchangeable	Interchangeable	V-0, 130°C	UL 796	UL	
Battery Pack	Shenzhenshi jiliyuan Electronic Technology Co.,Ltd	Li446586JLY	3.87V 4780mAh/18.50W h	IEC/EN 62133- 2:2017+A1	ZRLK Test report No.: ZKS211000 433-1	
-cell	Amperex Technology Limited	446586	3.87V 4780mAh	IEC/EN 62133- 2:2017+A1	ZRLK Test report No.: ZKS211000 433-1	
Adapter	Shenzhen Huajin Electronics Co., Ltd	HJ-0501000N2- EU	Input: 100-240V~, 50/60Hz, 0.15A Output: DC5.0V, 1A	EN/IEC 62368-1	Global Test Report No.: GTS202010 23016-1-6	
LCD Screen	SHENZHEN DJN PHOTOELECTRIC TECHNOLOGY CO.,LTD	9A-3R065- 1143B	TFT-LCD /TRANSMISSVIE 72.34*160.5*2.16 mm	EN 62368-1	Tested with appliance	
Speaker	XQD ACOUSTIC WATERPROOF ELECTRIC CO., LTD.	XQD-1318- 01001	7Ω±15% , Rated:1W	EN 62368-1	Tested with appliance	
LED Light	Shenzhen aolande Photoelectric Technology Co. , Ltd.	2016	3.2Vdc,150mA Exempt	EN 62471	SIT Report No.: SIT2103066 80101SR	
Vibration motor	Guangxi WeiYiTong Electronic Technology Co.,Ltd.	VICR1027	3.0V DC, 80mA Max, 12000±3000rpm	EN 62368-1	Tested with appliance	
Plastic Enclosure/But ton	Interchangeable	Interchangeable	MinHB, 60°C	UL 94	UL	

**Supplementary information:**

1) an asterisk indicates a mark which assures the agreed level of surveillance.

4.8.4, 4.8.5	TABLE: Lithium coin/button cell batteries mechanical tests	N/A
(The following mechanical tests are conducted in the sequence noted.)		
4.8.4.2	TABLE: Stress Relief test	—

EN 62368-1			
Clause	Requirement + Test	Result - Remark	Verdict

Part	Material	Oven Temperature (°C)	Comments
--	--	--	--
<b>4.8.4.3</b>	<b>TABLE: Battery replacement test</b>		---
Battery part no. ....:			---
Battery Installation/withdrawal		Battery Installation/Removal Cycle	Comments
		1	--
		2	--
		3	--
		4	--
		5	--
		6	--
		8	--
		9	--
		10	--

<b>4.8.4.4</b>	<b>TABLE: Drop test</b>		---
Impact Area	Drop Distance	Drop No.	Observations
--	--	1	--
--	--	2	--
--	--	3	--

<b>4.8.4.5</b>	<b>TABLE: Impact</b>		---
Impacts per surface	Surface tested	Impact energy (Nm)	Comments
--	--	--	--

<b>4.8.4.6</b>	<b>TABLE: Crush test</b>		---
Test position	Surface tested	Crushing Force (N)	Duration force applied (s)
--	--	--	--

Supplementary information:

<b>4.8.5</b>	<b>TABLE: Lithium coin/button cell batteries mechanical test result</b>		N/A
Test position	Surface tested	Force (N)	Duration force applied (s)
--	--	--	--

Supplementary information:

EN 62368-1			
Clause	Requirement + Test	Result - Remark	Verdict

<b>5.2</b>	<b>Table: Classification of electrical energy sources</b>	<b>P</b>
------------	---	----------

5.2.2.2 – Steady State Voltage and Current conditions

No.	Supply Voltage	Location (e.g. circuit designation)	Test conditions	Parameters			ES Class
				U (Vrms or Vpk)	I (Apk or Arms)	Hz	
1	5.0VDC	All internal circuits	Normal	--	--	--	ES1 (declared)
			Abnormal: --	--	--	--	
			Single fault: --	--	--	--	

5.2.2.3 - Capacitance Limits

No.	Supply Voltage	Location (e.g. circuit designation)	Test conditions	Parameters		ES Class
				Capacitance, nF	Upk (V)	
--	--	--	Normal:	--	--	--
			Abnormal: --	--	--	
			Single fault: SC/OC	--	--	

5.2.2.4 - Single Pulses

No.	Supply Voltage	Location (e.g. circuit designation)	Test conditions	Parameters			ES Class
				Duration (ms)	Upk (V)	lpk (mA)	
--	--	--	Normal	--	--	--	--
			Abnormal	--	--	--	
			Single fault – SC/OC	--	--	--	

5.2.2.5 - Repetitive Pulses

No.	Supply Voltage	Location (e.g. circuit designation)	Test conditions	Parameters			ES Class
				Off time (ms)	Upk (V)	lpk (mA)	
--	--	--	Normal	--	--	--	--
			Abnormal	--	--	--	
			Single fault – SC/OC	--	--	--	

EN 62368-1			
Clause	Requirement + Test	Result - Remark	Verdict

Test Conditions:  
 Normal –  
 Abnormal -  
 Supplementary information: SC=Short Circuit, OC=Open Circuit  
 The prospective touch voltage was measured when the flash device was ignited.

5.4.1.4, 6.3.2, 9.0, B.2.6	TABLE: Thermal requirements					P	
Supply voltage (V) .....	Condition 1	Condition 2	--	--	--	---	
Ambient T <sub>min</sub> (°C) .....	See below	See below	--	--	--	---	
Ambient T <sub>max</sub> (°C) .....	See below	See below	--	--	--	---	
T <sub>ma</sub> (°C) .....	40.0	40.0	--	--	--	---	
Maximum measured temperature T of part/at.....:	T (°C)				Allowed T <sub>max</sub> (°C)		
PCB near U101	58.3	56.4	-	-	130		
PCB near U601	58.9	58.7	-	-	130		
PCB near U701	58.0	58.3	-	-	130		
Battery body	55.7	54.1	-	-	Ref.		
Enclosure inside near PCB	51.7	51.1	-	-	Ref.		
Ambient	40.0	40.0	--	--	--		
Touch Temperatures							
DC inlet	33.6	33.1	--	--	60		
Enclosure outside near PCB	30.0	30.8	--	--	48		
Screen	35.5	34.5	--	--	48		
Button	35.3	35.2	--	--	48		
Adapter surface	35.8	--	--	--	77		
Ambient	25.0	25.0	--	--	--		
Supplementary information: Condition 1: the most unfavourable 5V charging condition. Condition 2: discharging full battery, normal operation.							
Temperature T of winding:	t <sub>1</sub> (°C)	R <sub>1</sub> (Ω)	t <sub>2</sub> (°C)	R <sub>2</sub> (Ω)	T (°C)	Allowed T <sub>max</sub> (°C)	Insulation class
--	--	--	--	--	--	--	--



EN 62368-1			
Clause	Requirement + Test	Result - Remark	Verdict

Supplementary information:

5.4.1.10.2	TABLE: Vicat softening temperature of thermoplastics		N/A
Penetration (mm)..... :			—
Object/ Part No./Material	Manufacturer/t rademark	T softening (°C)	
--	--	--	
Supplementary information:			

5.4.1.10.3	TABLE: Ball pressure test of thermoplastics			N/A
Allowed impression diameter (mm) ..... :				≤ 2 mm
Object/Part No./Material	Manufacturer/trademark	Test temperature (°C)	Impression diameter (mm)	
--	--	--	--	
Supplementary information:				

5.4.2.2, 5.4.2.4 and 5.4.3	TABLE: Minimum Clearances/Creepage distance							N/A
Clearance (cl) and creepage distance (cr) at/of/between:	Up (V)	U r.m.s. (V)	Frequency (kHz)#	Required cl (mm)	cl (mm)	Required cr (mm)	cr (mm)	
Basic/supplementary insulation								
--	--	--	--	--	--	--	--	
Reinforced insulation								
--	--	--	--	--	--	--	--	
Supplementary information: (#) Frequencies above and below 30 kHz Note 2: BI: basic insulation; SI: supplementary insulation; DI: double insulation; RI: reinforced insulation. *: According to 5.4.1.8.1 i), the working voltage to determine minimum creepage distances was measured after the ignition of the lamp.								

5.4.2.3	TABLE: Minimum Clearances distances using required withstand voltage			N/A
Overvoltage Category (OV):			--	
Pollution Degree:			--	
Clearance distanced between:	Required withstand voltage	Required cl (mm)	Measured cl (mm)	
Basic / supplementary insulation				

EN 62368-1			
Clause	Requirement + Test	Result - Remark	Verdict
5.4.2.3	<b>TABLE: Minimum Clearances distances using required withstand voltage</b>		<b>N/A</b>
	<b>Overvoltage Category (OV):</b>		--
	<b>Pollution Degree:</b>		--
Clearance distanced between:		Required withstand voltage	Required cl (mm)
--		--	--
Reinforced insulation			
--		--	--
Supplementary information:			
1. BI: basic insulation; SI: supplementary insulation; DI: double insulation; RI: reinforced insulation;			

5.4.2.4	<b>TABLE: Clearances based on electric strength test</b>			<b>N/A</b>
Test voltage applied between:		Required cl (mm)	Test voltage (Kv) peak/ r.m.s. / d.c.	Breakdown Yes / No
--		--	--	--
Supplementary information: Not used the alternative method to determine the clearances.				

5.4.4.2, 5.4.4.5 c) 5.4.4.9	<b>TABLE: Distance through insulation measurements</b>					<b>N/A</b>
Distance through insulation di at/of:		Peak voltage (V)	Frequency (Hz)	Material	Required DTI (mm)	DTI (mm)
--		--	--	--	--	--
Supplementary information:						

5.4.9	<b>TABLE: Electric strength tests</b>				<b>N/A</b>
Test voltage applied between:		Voltage shape (AC, DC)	Test voltage (V)	Breakdown Yes/No	
Functional:					
--		--	--	--	
Basic/supplementary:					
--		--	--	--	
Reinforced:					
--		--	--	--	
Supplementary information:					

EN 62368-1			
Clause	Requirement + Test	Result - Remark	Verdict

5.5.2.2	TABLE: Stored discharge on capacitors					N/A
Supply Voltage (V), Hz	Test Location	Operating Condition (N, S)	Switch position On or off	Measured Voltage (after 2 seconds)	ES Classification	
--	--	--	--	--	--	
Supplementary information: X-capacitors installed for testing are: -- <input type="checkbox"/> bleeding resistor rating: -- <input type="checkbox"/> ICX: Notes: A. Test Location: Phase to Neutral; Phase to Phase; Phase to Earth; and/or Neutral to Earth B. Operating condition abbreviations: N – Normal operating condition (e.g., normal operation, or open fuse); S –Single fault condition OC- Opened circuit						

5.6.6.2	TABLE: Resistance of protective conductors and terminations				N/A
Accessible part	Test current (A)	Duration (min)	Voltage drop (V)	Resistance (Ω)	
--	--	--	--	--	
Supplementary information:					

5.7.2.2, 5.7.4	TABLE: Earthed accessible conductive part		N/A
Supply voltage .....	--		—
Location	Test conditions specified in 6.1 of IEC 60990 or Fault Condition No in IEC 60990 clause 6.2.2.1 through 6.2.2.8, except for 6.2.2.7		Touch current (mA)
Measured to PE	1		N/A
	2*		N/A
	3		N/A
	4		N/A
	5		N/A
	6		N/A
	8		N/A
Supplementary Information:			

EN 62368-1			
Clause	Requirement + Test	Result - Remark	Verdict

Notes:  
 [1] Supply voltage is the anticipated maximum Touch Voltage  
 [2] Earthed neutral conductor [Voltage differences less than 1% or more]  
 [3] Specify method used for measurement as described in IEC 60990 sub-clause 4.3  
 [4] IEC60990, sub-clause 6.2.2.7, Fault 7 not applicable.  
 [5] (\*) IEC60990, sub-clause 6.2.2.2 is not applicable if switch or disconnect device (e.g., appliance coupler) provided.  
 N: Normal condition, R: Reverse condition.

6.2.2	Table: Electrical power sources (PS) measurements for classification					P
Source	Description	Measurement	Max Power after 3 s	Max Power after 5 s <sup>*)</sup>	PS Classification	
Battery	Normal	Power (W) :	-	-	PS2 (declare)	
		V <sub>A</sub> (V) :	-	-		
		I <sub>A</sub> (A) :	-	-		

Supplementary Information: SC: short circuit  
 (\*) Measurement taken only when limits at 3 seconds exceed PS1 limits.  
 (&) Power measurement for worst-case fault.  
 (#) Power measurement for worst-case power source fault.

6.2.3.1	Table: Determination of Potential Ignition Sources (Arcing PIS)				N/A
Location	Open circuit voltage After 3 s (V <sub>p</sub> )	Measured r.m.s current (I <sub>rms</sub> )	Calculated value (V <sub>p</sub> x I <sub>rms</sub> )	Arcing PIS? Yes / No	
--	--	--	--	--	

Supplementary information:  
 An Arcing PIS requires a minimum of 50 V (peak) a.c. or d.c. An Arcing PIS is established when the product of the open circuit voltage (V<sub>p</sub>) and normal operating condition rms current (I<sub>rms</sub>) is greater than 15.

6.2.3.2	Table: Determination of Potential Ignition Sources (Resistive PIS)				P
Circuit Location (x-y)	Operating Condition (Normal / Describe Single Fault)	Measured wattage or VA During first 30 s (W / VA)	Measured wattage or VA After 30 s (W / VA)	Protective Circuit, Regulator, or PTC Operated? Yes / No (Comment)	Resistive PIS? Yes/No
Battery pack output	--	<100	>15	--	Yes

EN 62368-1			
Clause	Requirement + Test	Result - Remark	Verdict

Supplementary Information:  
 All internal circuits were considered as resistive PIS.  
 A combination of voltmeter, VA and ammeter IA may be used instead of a wattmeter.  
 If a separate voltmeter and ammeter are used, the product of (VA x IA) is used to determine Resistive PIS classification.  
 A Resistive PIS: (a) dissipates more than 15 W, measured after 30 s of normal operation, or (b) under single fault conditions has either a power exceeding 100 W measured immediately after the introduction of the fault if electronic circuits, regulators or PTC devices are used, or has an available power exceeding 15 W measured 30 s after introduction of the fault.

8.5.5	TABLE: High Pressure Lamp	N/A
Description	Values	Energy Source Classification
Lamp type .....		—
Manufacturer .....		—
Cat no. ....		—
Pressure (cold) (MPa) .....		MS_
Pressure (operating) (MPa) .....		MS_
Operating time (minutes) .....		—
Explosion method .....		—
Max particle length escaping enclosure (mm) ..		MS_
Max particle length beyond 1 m (mm) .....		MS_
Overall result .....		
Supplementary information:		

B.2.5	TABLE: Input test						P
U (V)	I (A)	I <sub>rated</sub> (A)	P (W)	P <sub>rated</sub> (W)	Fuse No	I <sub>fuse</sub> (A)	Condition/status
5.0Vdc	1.093	1.0	5.465	--	--	--	Battery only charging current: 1.220A
5.0Vdc	1.098	1.0	5.490	--	--	--	Supplied by external DC Source, operation while charging (Max volume, Max brightness, run the BurnIn Test software), empty battery. Battery current: 0.550A(discharge current)
4.45 Vdc	--	--	--	--	--	--	Fully battery discharge. Battery current:1.069A
Supplementary information: the most unfavorable charging condition was considered.							

EN 62368-1			
Clause	Requirement + Test	Result - Remark	Verdict

B.3 TABLE: Abnormal operating condition tests								N/A
Ambient temperature (°C) .....						--	—	
Power source for EUT: Manufacturer, model/type, output rating .:						See cover page for details		—
Component No.	Abnormal Condition	Supply voltage, (V)	Test time (ms)	Fuse no.	Fuse current, (A)	T-couple	Temp. (°C)	Observation
--	--	--	--	--	--	--	--	--
Supplementary information: SC = short circuit.								

B.4 TABLE: Fault condition tests								P
Ambient temperature (°C) .....						25.0		—
Power source for EUT: Manufacturer, model/type, output rating .:						-		—
Component No.	Fault Condition	Supply voltage, (V)	Test time (ms)	Fuse no.	Fuse current, (A)	T-couple	Temp. (°C)	Observation
Battery B- to P- (battery)	Overcharge	5	7h	--	--	--	--	Normal working, recoverable, no damage, no hazards.
C902	S-C	5	10mins	--	--	--	--	Unit Shut down rapidly and recoverable, no damage no hazard.
C909	S-C	5	10mins	--	--	--	--	Unit Shut down rapidly and recoverable, no damage no hazard.
D801	S-C	5	10mins	--	--	--	--	Unit Shut down rapidly and recoverable, no damage no hazard.
Battery B- to P- (battery)	Dis-Overcharge	Fully battery	7h	--	--	--	--	Normal working, recoverable, no damage, no hazards.

EN 62368-1									
Clause	Requirement + Test				Result - Remark				Verdict
C473	S-C	Fully battery	10mins	--	--	--	--	--	Unit Shut down rapidly and recoverable, no damage no hazard.
C745	S-C	Fully battery	10mins	--	--	--	--	--	Unit Shut down rapidly and recoverable, no damage no hazard.
D801	S-C	Fully battery	10mins	--	--	--	--	--	Unit Shut down rapidly and recoverable, no damage no hazard.
Vibration Motor	Locked	Fully battery	7h	--	--	--	--	--	No ignition of the wrapping cheesecloth.
Supplementary information: CD - Components damaged (list damaged components) NB - No indication of dielectric breakdown. NC - Cheesecloth remained intact. NT - Tissue paper remained intact.									

Annex M	TABLE: Batteries								P	
The tests of Annex M are applicable only when appropriate battery data is not available									--	
Is it possible to install the battery in a reverse polarity position? .....								No	--	
	Non-rechargeable batteries			Rechargeable batteries						
	Discharging		Un-intentional charging	Charging		Discharging		Reversed charging		
	Meas. current	Manuf. Specs.		Meas. current	Manuf. Specs.	Meas. current	Manuf. Specs.	Meas. current	Manuf. Specs.	
Max. current during normal condition	--	--	--	1220mA	3000mA	1069mA	3000mA	--	--	
I <sub>max</sub> in fault U901 pin A1-E4 SC	--	--	--	2180mA	3000mA	--	--	--	--	
I <sub>max</sub> in fault U704 pin 1-8 SC	--	--	--	--	--	1184mA	3000mA	--	--	
Test results:									--	Verdict
- Chemical leaks									NO	P

Report No. STS211022001001E

EN 62368-1			
Clause	Requirement + Test	Result - Remark	Verdict
- Explosion of the battery		NO	P
- Emission of flame or expulsion of molten metal		NO	P
- Electric strength tests of equipment after completion of tests		--	--
Supplementary information:			

Annex M.4	Table: Additional safeguards for equipment containing secondary lithium batteries				P
Battery/Cell No.	Test conditions	Measurements			Observation
		U (V)	I (A)	Temp (°C)	
1	Normal	4.37	1.22	55.7	No damaged, no hazard.
2	Abnormal	4.37	1.22	55.7	No damaged, no hazard.
3	Single fault –	4.45	2.18	59.6	No damaged, no hazard.

Supplementary Information: SC = short circuit.

Battery identification	Charging at $T_{lowest}$ (°C)	Observation	Charging at $T_{highest}$ (°C)	Observation
Li-ion battery	0	Charging current: 0.717A	>55	--

Supplementary Information: The battery's ambient temperature did not exceed the highest and lowest specified charging temperature under normal operating conditions, abnormal operating conditions or single fault conditions.

Annex Q.1	TABLE: Circuits intended for interconnection with building wiring (LPS)				N/A	
Note: Measured UOC (V) with all load circuits disconnected:						
Output Circuit	Components	U <sub>oc</sub> (V)	I <sub>sc</sub> (A)		S (VA)	
			Meas.	Limit	Meas.	Limit
--	--	--	--	--	--	--
Supplementary Information:						

T.2, T.3, T.4, T.5	TABLE: Steady force test					P
Part/Location	Material	Thickness (mm)	Force (N)	Test Duration (sec)	Observation	



EN 62368-1					
Clause	Requirement + Test			Result - Remark	Verdict
Bottom of enclosure	--	--	100N	5	No damaged, no hazard
Side of enclosure	--	--	100N	5	No damaged, no hazard
Supplementary information:					

T.6, T.9	TABLE: Impact tests				N/A
Part/Location	Material	Thickness (mm)	Vertical distance (mm)	Observation	
--	--	--	--	--	
Supplementary information:					

T.7	TABLE: Drop tests				P
Part/Location	Material	Thickness (mm)	Drop Height (mm)	Observation	
Top	Glass	--	1000	No damage, no hazard.	
Side	Plastic	--	1000	No damage, no hazard.	
Bottom	Plastic	--	1000	No damage, no hazard.	
Supplementary information:					

T.8	TABLE: Stress relief test				P
Part/Location	Material	Thickness (mm)	Oven Temperature (°C)	Duration (h)	Observation
Plastic enclosure	Plastic	--	70	7	No damaged, no hazard.
Supplementary information:					

Attachment 1 – Photo Documentation



Fig.1



Fig.2



Fig.3



Fig.4

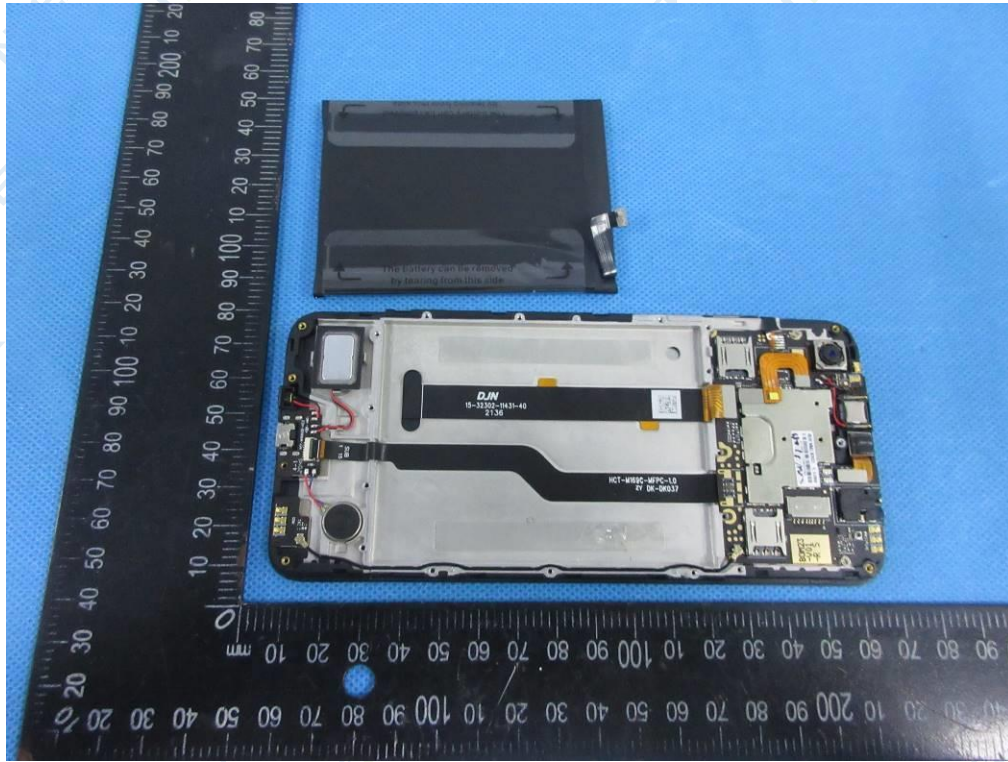


Fig.5



Fig.6

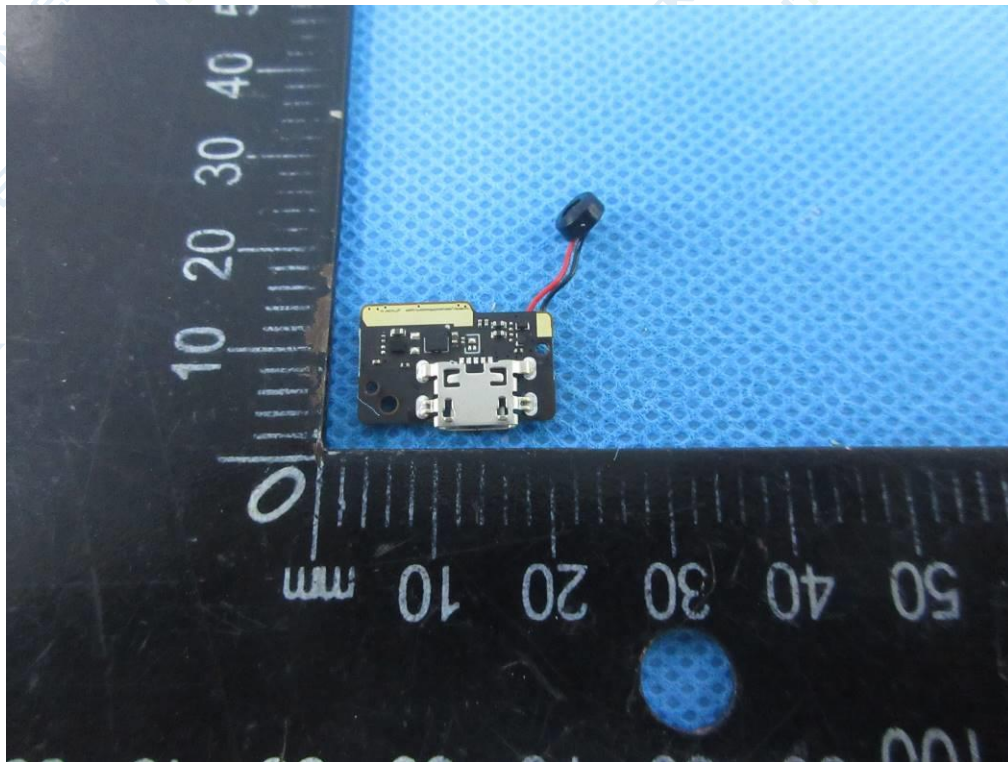


Fig.7

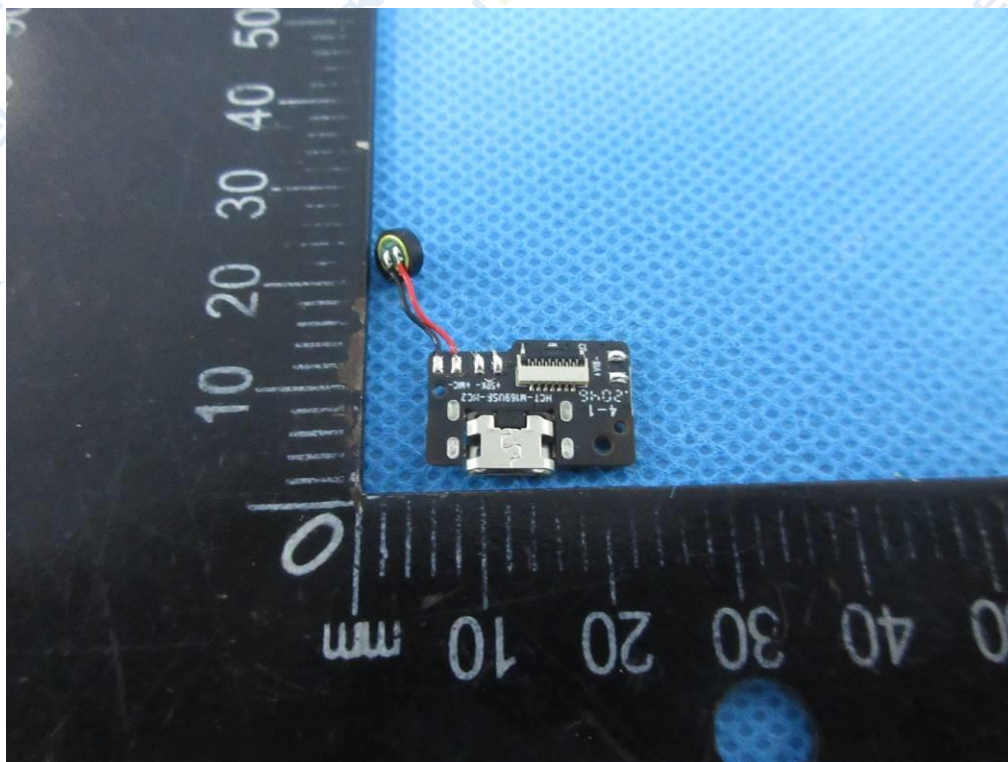


Fig.8

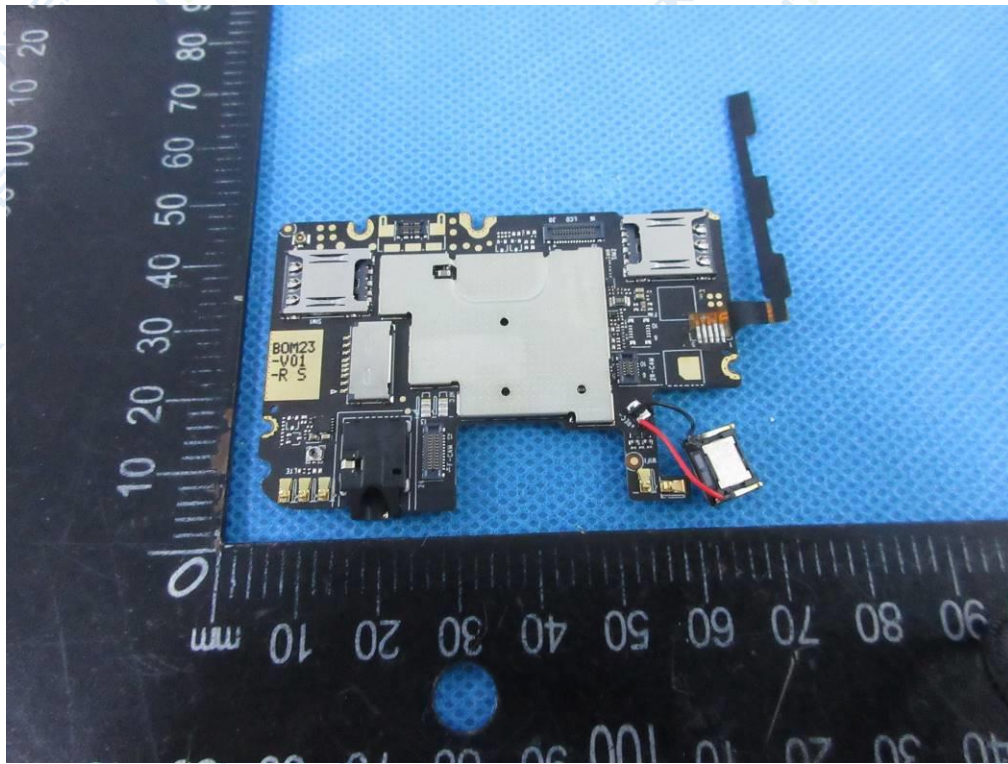


Fig.9

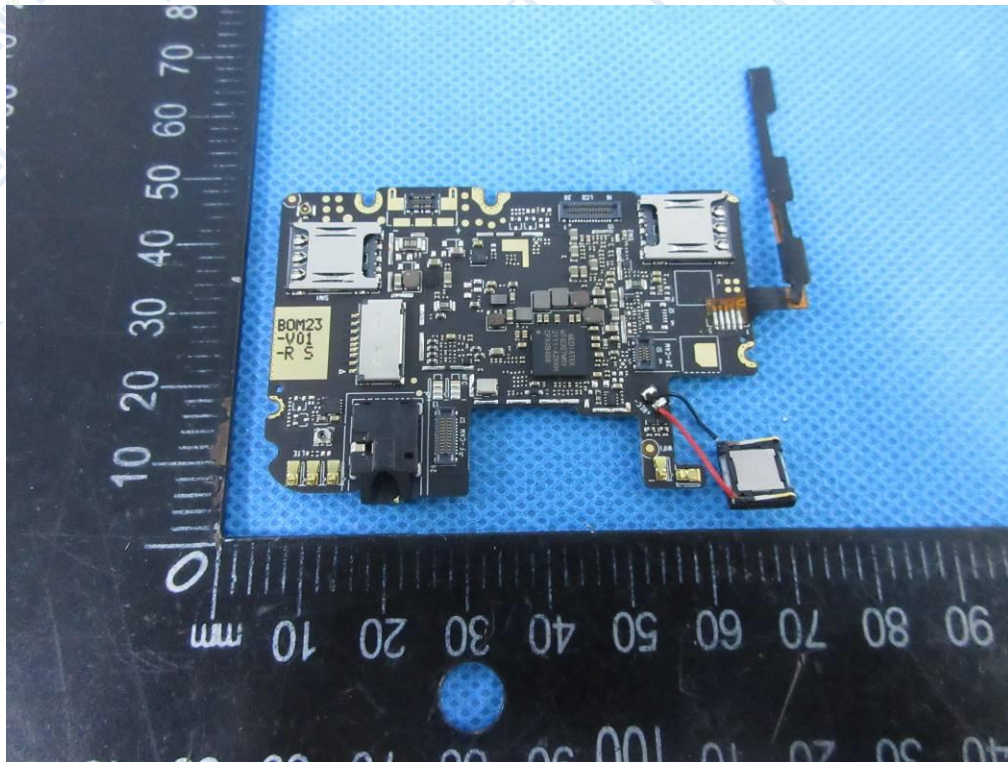


Fig.10

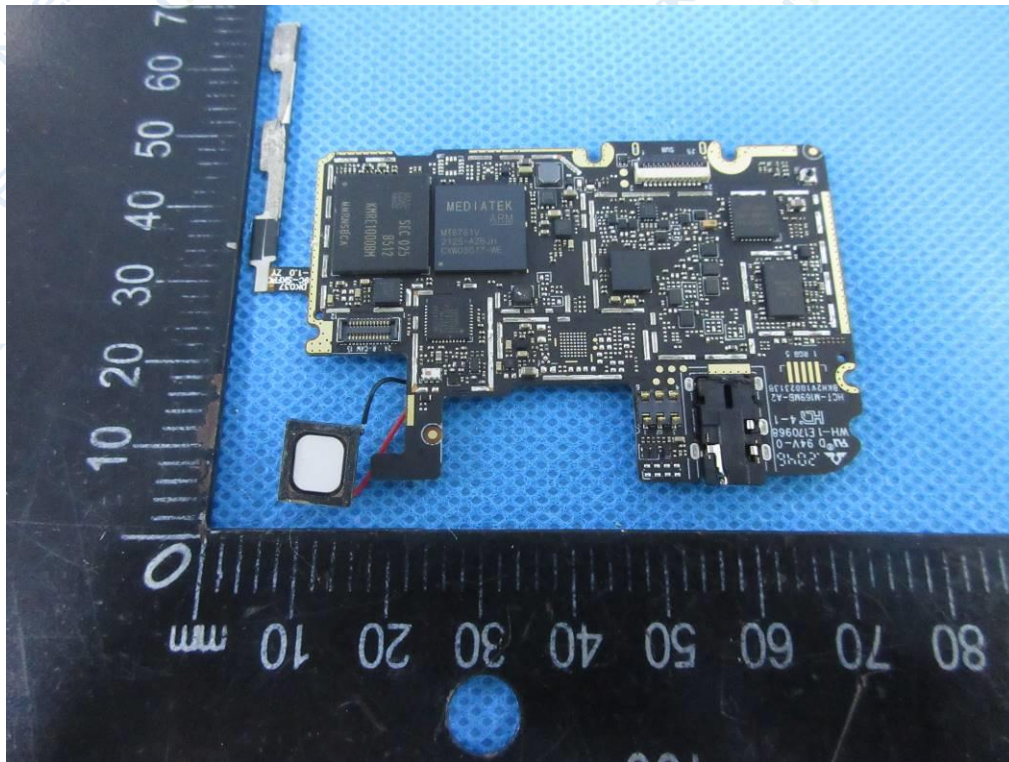


Fig.11



Fig.12

\*\*\*END OF REPORT\*\*\*