



Test Report

UTLR23094213

Date: Sep.20, 2023

Password:PW2842

Page: 1 of 13

Applicant: DOKE COMMUNICATION (HK) LIMITED

Address: RM 1902 EASEY COMM BLDG 253-261 HENNESSY ROAD WANCHAI HK CHINA

The following samples were submitted and identified on behalf of the clients as

Sample Name: Tablet
 Model No: Active 6
 Trade: Blackview
 Manufacturer: Shenzhen DOKE Electronic Co., Ltd
 Address: 801, Building3, 7th Industrial Zone, Yulv Community, Yutang Road, Guangming District, Shenzhen, China.
 Sample Received Date: Sep.11, 2023
 Test Period: Sep.11, 2023 to Sep.20, 2023
 Test Method: Please refer to next page(s).
 Test Result: Please refer to next page(s).

CONCLUSION :

According to client's request to conduct below tests in the selected parts of the submitted sample:

<u>TEST ITEM</u>	<u>RESULT</u>
1.RoHS Directive 2011/65/EU Annex II amending Annex(EU)2015/863 and amending Annex (EU)2017/2102	
-Lead, Cadmium, Mercury, Hexavalent Chromium, PBBs and PBDEs Content	PASS
-Di-(2-ethylhexyl) phthalate(DEHP), Benzylbutyl phthalate(BBP), Dibutyl phthalate(DBP), Diisobutyl phthalate(DIBP) Content	PASS



Authorized Signatory
Title: Lab Manager

For and on behalf of
Dongguan Universal Testing Technology Co., Ltd.

Except for full text reproduction, part of the report should not be copied without the written approval of this laboratory. Our report includes all of the tests requested by client and the results thereof based upon the information that you provided to us. The results in this report are not indicative of the quality or characteristics of the lot from which a test sample was taken unless specifically and expressly noted.

Dongguan Universal Testing Technology Co., Ltd

3rd Floor, HuiHai Building, No.631 Yinlang South Road, Dalang Town, Dongguan City, Guangdong province, China.

Website :<http://www.utl-lab.cn>

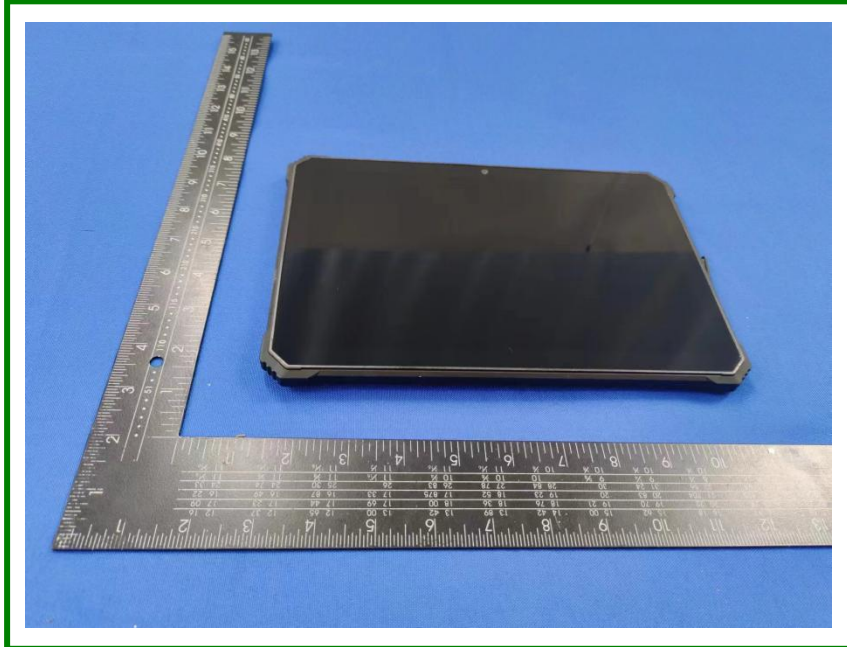
E-mail: Kingchan168@126.com

Hotline: +86 13602386325

Tel: +86 400-068-3789



Photos of submitted sample



Except for full text reproduction, part of the report should not be copied without the written approval of this laboratory. Our report includes all of the tests requested by client and the results thereof based upon the information that you provided to us. The results in this report are not indicative of the quality or characteristics of the lot from which a test sample was taken unless specifically and expressly noted.

Dongguan Universal Testing Technology Co., Ltd

3rd Floor, HuiHai Building, No.631 Yinlang South Road, Dalang Town, Dongguan City, Guangdong province, China.

Website :<http://www.utl-lab.cn>

E-mail: Kingchan168@126.com

Hotline: +86 13602386325

Tel: +86 400-068-3789



Test Report

UTLR23094213

Date: Sep.20, 2023

Password:PW2842

Page: 3 of 13

Test Result(s):

Part No.	Part Description
P1	Black glass
P2	Display screen cover glass
P3	Transparent plastic plate
P4	Transparent plastic plate
P5	White plastic board
P6	Transparent plastic board
P7	Silver aluminum shell rear cover
P8	Copper strip adhesive
P9	Black plastic socket
P10	Yellow PCB sticker
P11	Silver metal sheet
P12	Silver aluminum inner shell
P13	Silver metal buckle
P14	Silver metal screw
P15	Off white plastic socket
P16	Silver metal screw port
P17	Grey cotton sticker
P18	Black glue
P19	Black plastic socket
P20	Silver metal cover
P21	Silver metal cover
P22	Silver metal cover
P23	Silver metal cover
P24	Light purple adhesive
P25	White label paper
P26	Silver metal cover
P27	Black electronic components
P28	Black electronic components
P29	Off white plastic socket
P30	Gray metal electronic components
P31	Soldering tin
P32	Black electronic components
P33	Black cotton tape with silver plastic paper
P34	Black PCB board
P35	Black metal screw
P36	Black soft plastic cover

Except for full text reproduction, part of the report should not be copied without the written approval of this laboratory. Our report includes all of the tests requested by client and the results thereof based upon the information that you provided to us. The results in this report are not indicative of the quality or characteristics of the lot from which a test sample was taken unless specifically and expressly noted.

Dongguan Universal Testing Technology Co., Ltd

3rd Floor, HuiHai Building, No.631 Yinlang South Road, Dalang Town, Dongguan City, Guangdong province, China.

Website :<http://www.utl-lab.cn>

E-mail: Kingchan168@126.com

Hotline: +86 13602386325

Tel: +86 400-068-3789



Test Report

UTLR23094213

Date: Sep.20, 2023

Password:PW2842

Page: 4 of 13

P37	Black cotton tape adhesive
P38	Black plastic shell
P39	Silver aluminum shell
P40	Black plastic border
P41	Silver metal border
P42	Copper wire coil
P43	Transparent film with black cardboard
P44	Silver metal sheet
P45	Silver magnet
P46	Silver magnet
P47	Silver metal back cover
P48	Silver metal wire core
P49	Black plastic wire cover
P50	Red plastic wire cover

1.RoHS Directive 2011/65/EU and its amending Directive (EU)2015/863 & Directive (EU)2017/2102

ROHS Restricted Substances	Limit(w/w)
Lead(Pb)	0.1%
Cadmium(Cd)	0.01%
Mercury(Hg)	0.1%
Hexavalent Chromium(Cr VI)	0.1%
Polybromobiphenyls (PBBs)	0.1%
Polybromodiphenyl ethers (PBDEs)	0.1%
Di-(2-ethylhexyl) phthalate(DEHP)	0.1%
Benzylbutyl phthalate(BBP)	0.1%
Dibutyl phthalate(DBP)	0.1%
Diisobutyl phthalate(DIBP)	0.1%

1.Lead, Cadmium, Mercury, Hexavalent Chromium, PBBs and PBDEs Content –RoHS Directive 2011/65/EU and its amending Directive (EU)2015/863 & Directive (EU)2017/2102

Method(s) Used: Please refer to Annex B

PRELIMINARY SCREENING ASSESSMENT

Part No.	Result(s)(mg/kg)				
	Lead	Cadmium	Mercury	Chromium	Bromine
P1	BL	BL	BL	BL	BL
P2	BL	BL	BL	BL	BL
P3	BL	BL	BL	BL	BL
P4	BL	BL	BL	BL	BL

Except for full text reproduction, part of the report should not be copied without the written approval of this laboratory. Our report includes all of the tests requested by client and the results thereof based upon the information that you provided to us. The results in this report are not indicative of the quality or characteristics of the lot from which a test sample was taken unless specifically and expressly noted.

Dongguan Universal Testing Technology Co., Ltd

3rd Floor, HuiHai Building, No.631 Yinlang South Road, Dalang Town, Dongguan City, Guangdong province, China.

Website :<http://www.utl-lab.cn>

E-mail: Kingchan168@126.com

Hotline: +86 13602386325

Tel: +86 400-068-3789



Test Report

UTLR23094213

Date: Sep.20, 2023

Password:PW2842

Page: 5 of 13

P5	BL	BL	BL	BL	BL
P6	BL	BL	BL	BL	BL
P7	BL	BL	BL	BL	NA
P8	BL	BL	BL	BL	NA
P9	BL	BL	BL	BL	BL
P10	BL	BL	BL	BL	BL
P11	BL	BL	BL	X	NA
P12	BL	BL	BL	BL	NA
P13	BL	BL	BL	X	NA
P14	BL	BL	BL	BL	NA
P15	BL	BL	BL	BL	BL
P16	BL	BL	BL	BL	NA
P17	BL	BL	BL	BL	BL
P18	BL	BL	BL	BL	BL
P19	BL	BL	BL	BL	BL
P20	BL	BL	BL	BL	NA
P21	BL	BL	BL	BL	NA
P22	BL	BL	BL	BL	NA
P23	BL	BL	BL	BL	NA
P24	BL	BL	BL	BL	BL
P25	BL	BL	BL	BL	BL
P26	BL	BL	BL	BL	NA
P27	BL	BL	BL	BL	BL
P28	BL	BL	BL	BL	BL
P29	BL	BL	BL	BL	BL
P30	BL	BL	BL	X	NA
P31	BL	BL	BL	BL	NA
P32	BL	BL	BL	BL	BL
P33	BL	BL	BL	BL	BL
P34	BL	BL	BL	BL	BL
P35	BL	BL	BL	BL	NA
P36	BL	BL	BL	BL	BL
P37	BL	BL	BL	BL	BL
P38	BL	BL	BL	BL	BL
P39	BL	BL	BL	X	NA
P40	BL	BL	BL	BL	BL
P41	BL	BL	BL	BL	NA
P42	BL	BL	BL	BL	NA

Except for full text reproduction, part of the report should not be copied without the written approval of this laboratory. Our report includes all of the tests requested by client and the results thereof based upon the information that you provided to us. The results in this report are not indicative of the quality or characteristics of the lot from which a test sample was taken unless specifically and expressly noted.

Dongguan Universal Testing Technology Co., Ltd

3rd Floor, HuiHai Building, No.631 Yinlang South Road, Dalang Town, Dongguan City, Guangdong province, China.

Website :<http://www.utl-lab.cn>

E-mail: Kingchan168@126.com

Hotline: +86 13602386325

Tel: +86 400-068-3789



P43	BL	BL	BL	BL	BL
P44	BL	BL	BL	BL	NA
P45	BL	BL	BL	BL	NA
P46	BL	BL	BL	BL	NA
P47	BL	BL	BL	BL	NA
P48	BL	BL	BL	BL	NA
P49	BL	BL	BL	BL	BL
P50	BL	BL	BL	BL	BL

Note(s):

- 1.mg/kg = milligram(s) per kilogram = ppm = part(s) per million
- 2.BL=Below limit; OL=Over limit; NA=Not applicable; X=further chemical testing needed
- 3.APPENDIX A for interpretation of EDXRF results(StandardIEC62321-3-1)

APPENDIX A

Element	Polymer Materials	Metallic Materials	Composite Materials
Cd	$BL \leq (70-3\sigma) < X < (130+3\sigma) \leq OL$	$BL \leq (70-3\sigma) < X < (130+3\sigma) \leq OL$	$LOD < X < (150+3\sigma) \leq OL$
Pb	$BL \leq (700-3\sigma) < X < (1300+3\sigma) \leq OL$	$BL \leq (700-3\sigma) < X < (1300+3\sigma) \leq OL$	$BL \leq (500-3\sigma) < X < (1500+3\sigma) \leq OL$
Hg	$BL \leq (700-3\sigma) < X < (1300+3\sigma) \leq OL$	$BL \leq (700-3\sigma) < X < (1300+3\sigma) \leq OL$	$BL \leq (500-3\sigma) < X < (1500+3\sigma) \leq OL$
Br	$BL \leq (300-3\sigma) < X$	NA	$BL \leq (250-3\sigma) < X$
Cr	$BL \leq (700-3\sigma) < X$	$BL \leq (700-3\sigma) < X$	$BL \leq (500-3\sigma) < X$

Note(s): Results was obtained by EDXRF for primary screening. According the APPENDIX A below, further chemical testing by ICP (for Cd, Pb, Hg), UV-VIS (for CrVI) and GCMSD (for PBBs, PBDEs) have to be performed, if the XRF results is in the range defined as inconclusive (X). Further chemical testing is also proposed when results are over limit (OL) in order to have a numeral result to compare to the limits set by the Directive 2011/65/EU.



Test Report

UTLR23094213

Date: Sep.20, 2023

Password:PW2842

Page: 7 of 13

CHEMICAL TEST

Part No.	Test item	Result	Limit	Conclusion
P11	Chromium VI(Cr VI)	Negative	Negative	Pass
P13	Chromium VI(Cr VI)	Negative	Negative	Pass
P30	Chromium VI(Cr VI)	Negative	Negative	Pass
P39	Chromium VI(Cr VI)	Negative	Negative	Pass

Note:

1. Result(s) of Cr VI for metallic material(s) was (were) expressed in term of positive and negative. Negative means the absence of Cr VI on the tested areas and the result(s) was (were) regarded as in compliance with European Council Directive 2011/65/EU, Article 4(1). While, positive means the presence of Cr VI on tested areas and the result(s) was (were) regarded as in conflict with European Council Directive 201/65/EU, Article 4(1).

Except for full text reproduction, part of the report should not be copied without the written approval of this laboratory. Our report includes all of the tests requested by client and the results thereof based upon the information that you provided to us. The results in this report are not indicative of the quality or characteristics of the lot from which a test sample was taken unless specifically and expressly noted.

Dongguan Universal Testing Technology Co., Ltd

3rd Floor, HuiHai Building, No.631 Yinlang South Road, Dalang Town, Dongguan City, Guangdong province, China.

Website :<http://www.utl-lab.cn>

E-mail: Kingchan168@126.com

Hotline: +86 13602386325

Tel: +86 400-068-3789



APPENDIX B

List of Analytes and their Corresponding Test Methods [European Council Directive 2011/65/EU] :

No.	Name of Analytes	Test Method(s)
1	Lead(Pb), mercury(Hg), cadmium(Cd), total chromium(Cr) and total bromine(Br) using X-ray fluorescence spectrometry	With reference to IEC 62321-3-1:2013
2	Lead (Pb)	With reference to IEC 62321-5:2013
3	Cadmium (Cd)	
4	Mercury (Hg)	With reference to IEC 62321-4:2013/AMD1:2017
5	Chromium VI (Cr VI)	Metal :With reference to IEC 62321-7-1:2015 Polymers & Electronics :With reference to IEC 62321-7-2:2017
6	Polybromobiphenyls (PBBs) - Bromobiphenyl (MonoBB) - Dibromobiphenyl (DiBB) - Tribromobiphenyl (TriBB) - Tetrabromobiphenyl (TetraBB) - Pentabromobiphenyl (PentaBB) - Hexabromobiphenyl (HexaBB) - Heptabromobiphenyl (HeptaBB) - Octabromobiphenyl (OctaBB) - Nonabromobiphenyl (NonaBB) - Decabromobiphenyl (DecaBB)	With reference to IEC 62321-6:2015
7	Polybromodiphenyl ethers (PBDEs) - Bromodiphenyl ether (MonoBDE) - Dibromodiphenyl ether (DiBDE) - Tribromodiphenyl ether (TriBDE) - Tetrabromodiphenyl ether (TetraBDE) - Pentabromodiphenyl ether (PentaBDE) - Hexabromodiphenyl ether (HexaBDE) - Heptabromodiphenyl ether (HeptaBDE) - Octabromodiphenyl ether (OctaBDE) - Nonabromodiphenyl ether (NonaBDE) - Decabromodiphenyl ether (DecaBDE)	
[a]	The principle of this method was evaluated and supported by two studies organized by IEC TC 111 WG3. These studies were focused on detecting the presence of Cr VI in the corrosion protection coatings on metallic samples.	



1.2.Di-(2-ethylhexyl) phthalate(DEHP), Benzylbutyl phthalate(BBP), Dibutyl phthalate(DBP), Diisobutyl phthalate(DIBP) Content- RoHS Directive 2011/65/EU Annex II amending Annex(EU)2015/863 and amending Annex (EU)2017/2102

Test Method: With reference to IEC 62321-8:2017, analysis was performed by GC-MS.

Test Items	Unit	Result	MDL	Limit
		<u>P3+P4+P5+P6+P9+P10+P15+P19+P29+P34+P38+P40</u>		
Di-(2-ethylhexyl) phthalate(DEHP)	mg/kg	N.D.	50	1000
Benzylbutyl phthalate(BBP)	mg/kg	N.D.	50	1000
Dibutyl phthalate(DBP)	mg/kg	N.D.	50	1000
Diisobutyl phthalate(DIBP)	mg/kg	N.D.	50	1000
Conclusion		Pass	-	-

Test Items	Unit	Result	MDL	Limit
		<u>P49+P50</u>		
Di-(2-ethylhexyl) phthalate(DEHP)	mg/kg	N.D.	50	1000
Benzylbutyl phthalate(BBP)	mg/kg	N.D.	50	1000
Dibutyl phthalate(DBP)	mg/kg	N.D.	50	1000
Diisobutyl phthalate(DIBP)	mg/kg	N.D.	50	1000
Conclusion		Pass	-	-

Test Items	Unit	Result	MDL	Limit
		<u>P43</u>		
Di-(2-ethylhexyl) phthalate(DEHP)	mg/kg	N.D.	50	1000
Benzylbutyl phthalate(BBP)	mg/kg	N.D.	50	1000
Dibutyl phthalate(DBP)	mg/kg	N.D.	50	1000
Diisobutyl phthalate(DIBP)	mg/kg	N.D.	50	1000
Conclusion		Pass	-	-

Test Items	Unit	Result	MDL	Limit
		<u>P36</u>		
Di-(2-ethylhexyl) phthalate(DEHP)	mg/kg	N.D.	50	1000
Benzylbutyl phthalate(BBP)	mg/kg	N.D.	50	1000
Dibutyl phthalate(DBP)	mg/kg	N.D.	50	1000
Diisobutyl phthalate(DIBP)	mg/kg	N.D.	50	1000
Conclusion		Pass	-	-

Except for full text reproduction, part of the report should not be copied without the written approval of this laboratory. Our report includes all of the tests requested by client and the results thereof based upon the information that you provided to us. The results in this report are not indicative of the quality or characteristics of the lot from which a test sample was taken unless specifically and expressly noted.

Dongguan Universal Testing Technology Co., Ltd

3rd Floor, HuiHai Building, No.631 Yinlang South Road, Dalang Town, Dongguan City, Guangdong province, China.

Website :<http://www.utl-lab.cn>

E-mail: Kingchan168@126.com

Hotline: +86 13602386325

Tel: +86 400-068-3789



Test Report

UTLR23094213

Date: Sep.20, 2023

Password:PW2842

Page: 10 of 13

Test Items	Unit	Result	MDL	Limit
		<u>P17+P33+P37</u>		
Di-(2-ethylhexyl) phthalate(DEHP)	mg/kg	N.D.	50	1000
Benzylbutyl phthalate(BBP)	mg/kg	N.D.	50	1000
Dibutyl phthalate(DBP)	mg/kg	N.D.	50	1000
Diisobutyl phthalate(DIBP)	mg/kg	N.D.	50	1000
Conclusion		Pass	-	-

Test Items	Unit	Result	MDL	Limit
		<u>P25</u>		
Di-(2-ethylhexyl) phthalate(DEHP)	mg/kg	N.D.	50	1000
Benzylbutyl phthalate(BBP)	mg/kg	N.D.	50	1000
Dibutyl phthalate(DBP)	mg/kg	N.D.	50	1000
Diisobutyl phthalate(DIBP)	mg/kg	N.D.	50	1000
Conclusion		Pass	-	-

Note:

1. mg/kg = milligram per kilogram= ppm.
2. MDL = Method Detection Limit.
3. N.D. = Not Detected (< MDL)
4. "+"=mixed test, data users should consider the risk of "pass" results of mixed sample

Except for full text reproduction, part of the report should not be copied without the written approval of this laboratory. Our report includes all of the tests requested by client and the results thereof based upon the information that you provided to us. The results in this report are not indicative of the quality or characteristics of the lot from which a test sample was taken unless specifically and expressly noted.

Dongguan Universal Testing Technology Co., Ltd

3rd Floor, HuiHai Building, No.631 Yinlang South Road, Dalang Town, Dongguan City, Guangdong province, China.

Website :<http://www.utl-lab.cn>

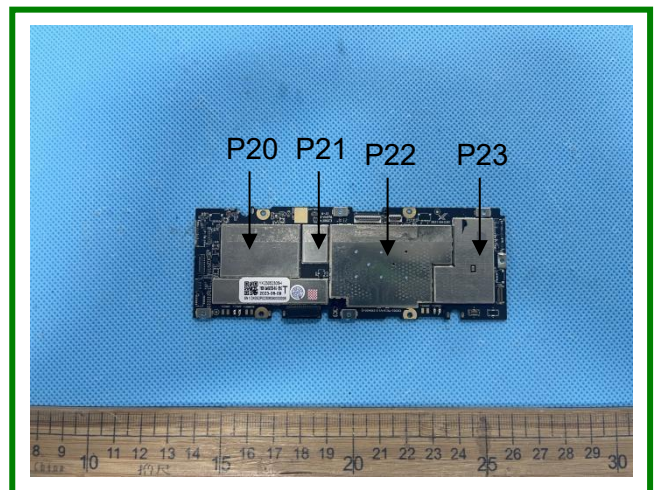
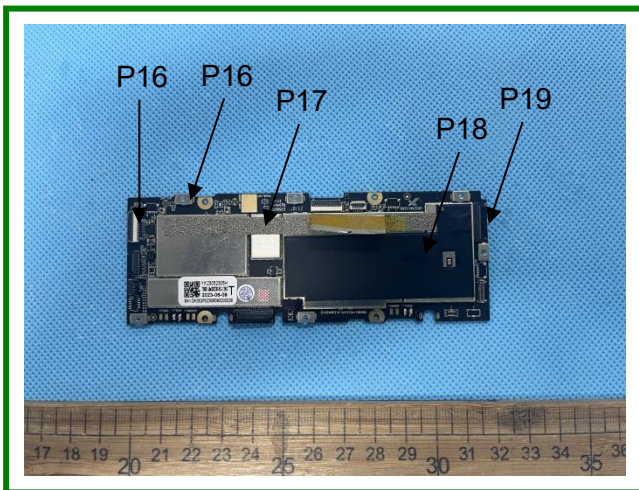
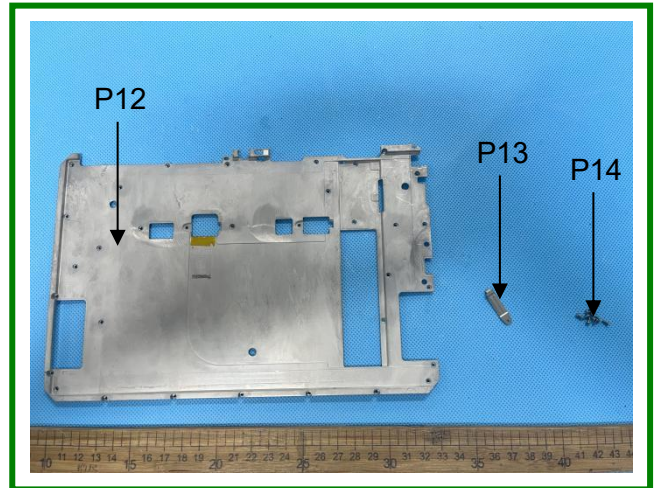
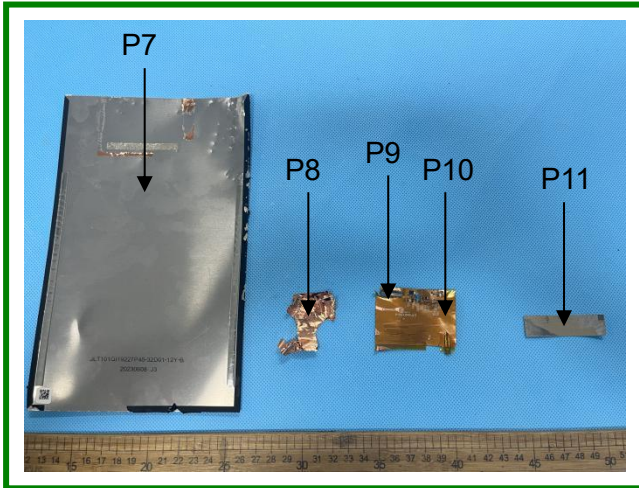
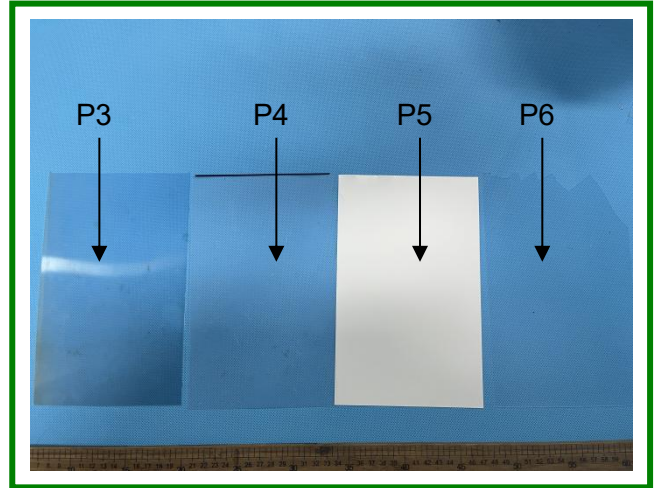
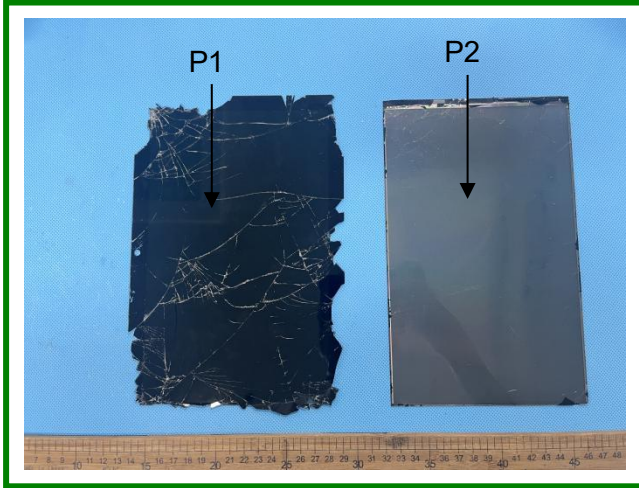
E-mail: Kingchan168@126.com

Hotline: +86 13602386325

Tel: +86 400-068-3789



Parts photos:



Except for full text reproduction, part of the report should not be copied without the written approval of this laboratory. Our report includes all of the tests requested by client and the results thereof based upon the information that you provided to us. The results in this report are not indicative of the quality or characteristics of the lot from which a test sample was taken unless specifically and expressly noted.

Dongguan Universal Testing Technology Co., Ltd

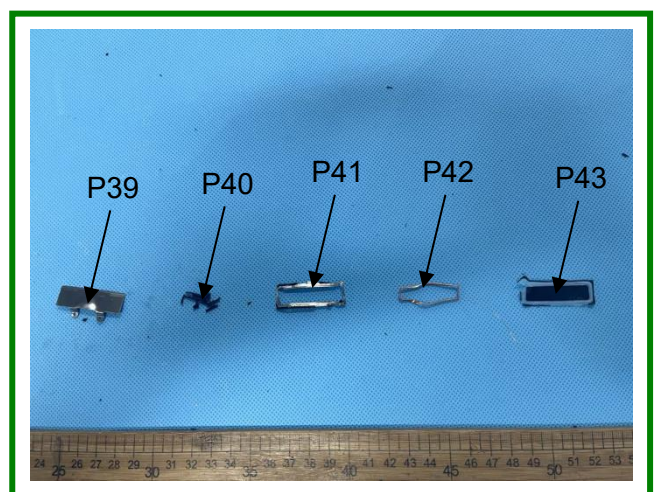
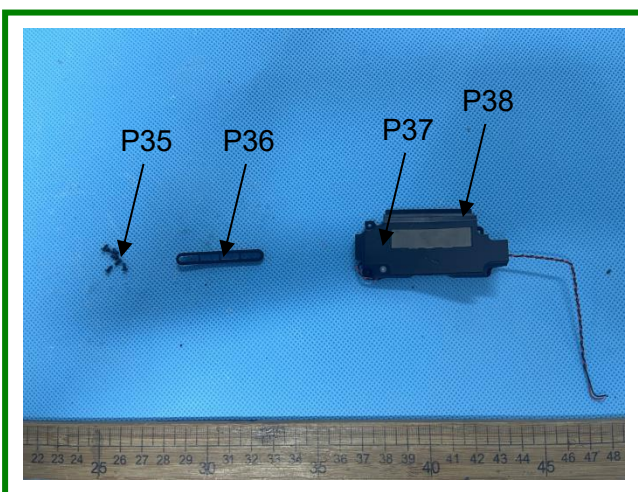
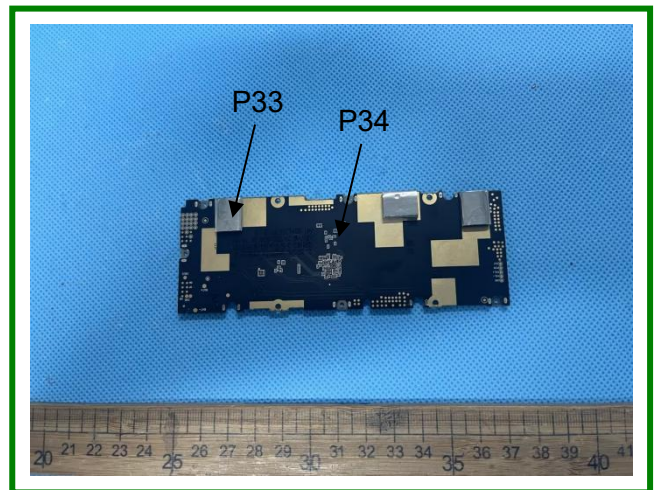
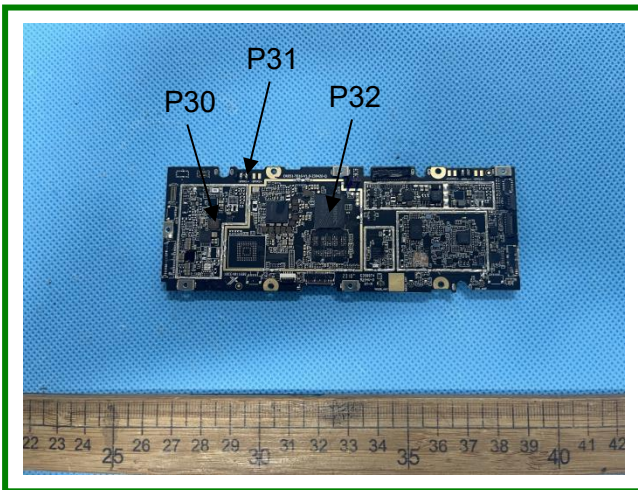
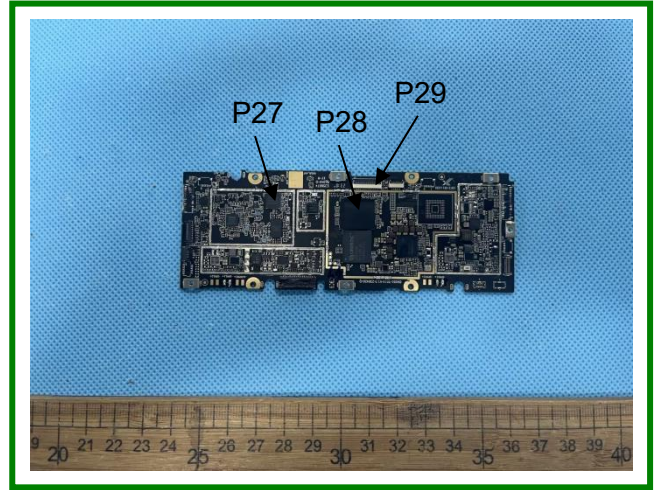
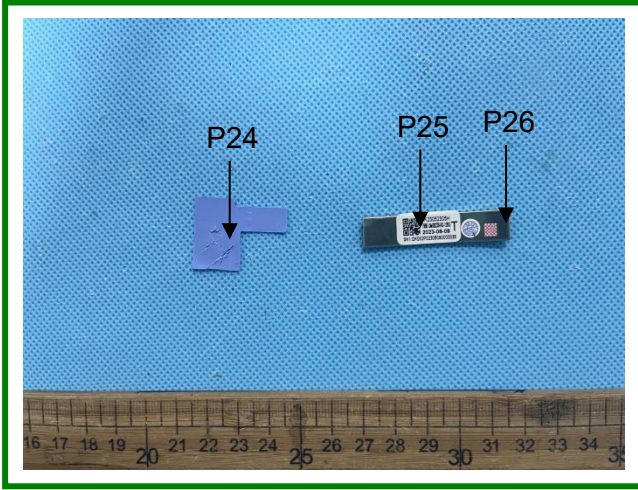
3rd Floor, HuiHai Building, No.631 Yinlang South Road, Dalang Town, Dongguan City, Guangdong province, China.

Website :<http://www.utl-lab.cn>

E-mail: Kingchan168@126.com

Hotline: +86 13602386325

Tel: +86 400-068-3789



Except for full text reproduction, part of the report should not be copied without the written approval of this laboratory. Our report includes all of the tests requested by client and the results thereof based upon the information that you provided to us. The results in this report are not indicative of the quality or characteristics of the lot from which a test sample was taken unless specifically and expressly noted.

Dongguan Universal Testing Technology Co., Ltd

3rd Floor, HuiHai Building, No.631 Yinlang South Road, Dalang Town, Dongguan City, Guangdong province, China.

Website :<http://www.utl-lab.cn>

E-mail: Kingchan168@126.com

Hotline: +86 13602386325

Tel: +86 400-068-3789



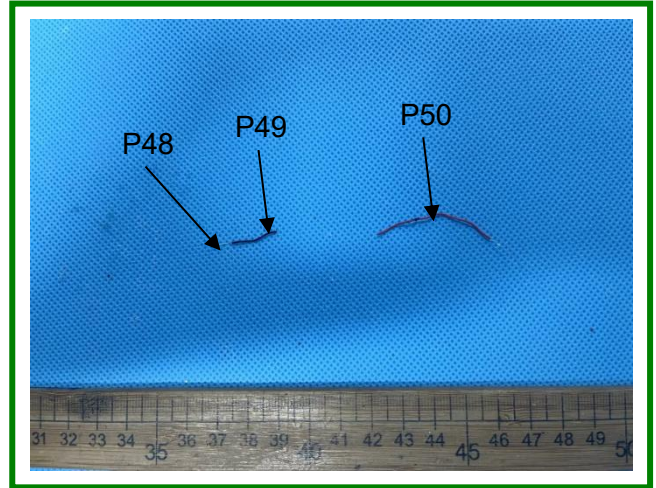
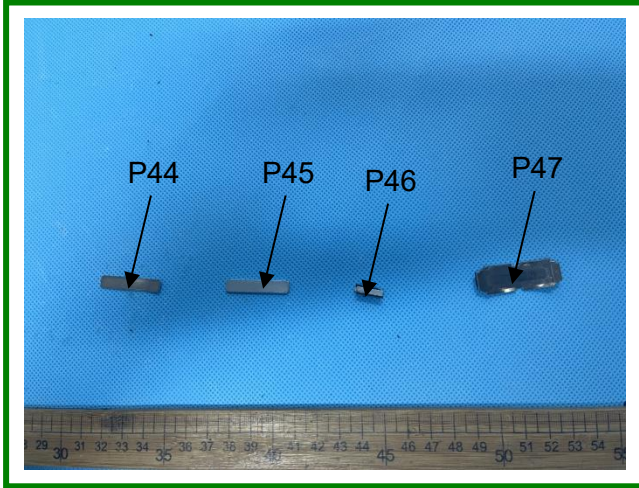
Test Report

UTLR23094213

Date: Sep.20, 2023

Password:PW2842

Page: 13 of 13



***** End of Test Report *****

Except for full text reproduction, part of the report should not be copied without the written approval of this laboratory. Our report includes all of the tests requested by client and the results thereof based upon the information that you provided to us. The results in this report are not indicative of the quality or characteristics of the lot from which a test sample was taken unless specifically and expressly noted.

Dongguan Universal Testing Technology Co., Ltd

3rd Floor, HuiHai Building, No.631 Yinlang South Road, Dalang Town, Dongguan City, Guangdong province, China.

Website :<http://www.utl-lab.cn>

E-mail: Kingchan168@126.com

Hotline: +86 13602386325

Tel: +86 400-068-3789